



Chipsmall Limited consists of a professional team with an average of over 10 year of expertise in the distribution of electronic components. Based in Hongkong, we have already established firm and mutual-benefit business relationships with customers from,Europe,America and south Asia,supplying obsolete and hard-to-find components to meet their specific needs.

With the principle of “Quality Parts,Customers Priority,Honest Operation,and Considerate Service”,our business mainly focus on the distribution of electronic components. Line cards we deal with include Microchip,ALPS,ROHM,Xilinx,Pulse,ON,Everlight and Freescale. Main products comprise IC,Modules,Potentiometer,IC Socket,Relay,Connector.Our parts cover such applications as commercial,industrial, and automotives areas.

We are looking forward to setting up business relationship with you and hope to provide you with the best service and solution. Let us make a better world for our industry!



## Contact us

Tel: +86-755-8981 8866 Fax: +86-755-8427 6832

Email & Skype: info@chipsmall.com Web: www.chipsmall.com

Address: A1208, Overseas Decoration Building, #122 Zhenhua RD., Futian, Shenzhen, China



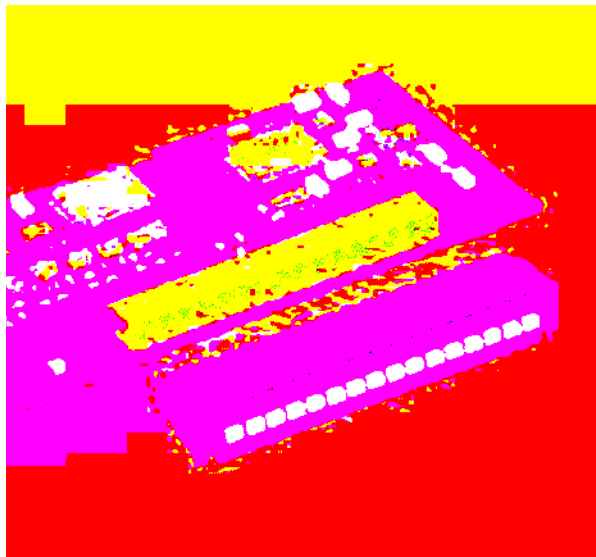


## TWO IN ONE COMBICON Headers for Through Hole Reflow Processes, 5.08 mm Pitch

---

With the "TWO IN ONE" solution for COMBICON THR pin strips, it is now possible to have components with a high number of positions, i.e. 12 - 24. The THR pin strip is assembled on the PCB from two segments. The inner side panels have not been added to the segments. This makes room for the housings to be mounted and aligned without contact. After reflow soldering, one has the same properties as with single section pin strips, i.e. plugging remains as convenient as before.

All pin strips are made of high temperature resistant Liquid Crystal Polymer (LCP) and are suitable for use in lead-free solder processes with high peak temperatures.



### COMBICON Select

The COMBICON search engine with CAD downloading



COMBICON Select – the printed circuit board connection software supports your workflow from the PCB and housing layout to the ordering process with:

- Systematic and fast selection of products
- Universal Internet aided engineering with extensive CAD downloading
- Easy-to-use e-shopping functions.

<http://select.phoenixcontact.com>

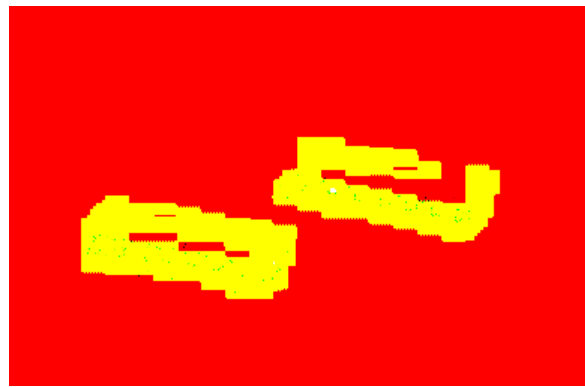
# CCA 2,5/...-GL(R)-5,08P26THR 5.08 mm Pitch



Bottom view, free space for solder paste, 0.5 mm deep

### Note:

COMBICON plug connectors may only be actuated in the no-load condition. If smaller loads need to be switched for operational reasons, experimental values are available on request.



Description	No. of pos.	Dim. a [mm]
<b>Header with panel on one side,</b> plug-in direction parallel to the PCB, pin length 2.6 mm, 5.08 mm pitch, color: black	6	25.40
	7	30.48
	8	35.56
	9	40.64
	10	45.72
	11	50.80
12	55.88	
<b>Header with panel on one side,</b> plug-in direction parallel to the PCB, pin length 2.6 mm, 5.08 mm pitch, color: black	6	25.40
	7	30.48
	8	35.56
	9	40.64
	10	45.72
	11	50.80
12	55.88	

(1) **Coding element**, inserted into the recess on the header after the reflow assembly process, red insulation material

(2) **HT coding element**, inserted into the recess on the header before the reflow process, made of high temperature resistant beige plastic



(3) **Marker card**, with 12 pcs. 10-section marker strips, white, self-adhesive, for 120 terminal blocks



### Technical data

Dimensions	
Pitch	[mm]
Hole diameter	[mm]
Pin dimensions	[mm]x[mm]

### Technical data in accordance with IEC/ DIN VDE

Insulating material group	-
Surge voltage category / contamination class	-/-
Rated voltage	[V]
Rated surge voltage	[kV]
Nominal current / cross section	[A]/[mm²]
Maximum load current / cross section	[A]/[mm²]

### Insulating material

Inflammability class in acc. with UL 94

Type	Order No.	Pcs./Pkt.
<b>CCA 2,5/6-GL-5,08P26THR</b>	<b>19 59 10 5</b>	50
<b>CCA 2,5/7-GL-5,08P26THR</b>	<b>19 59 11 8</b>	
<b>CCA 2,5/8-GL-5,08P26THR</b>	<b>19 59 12 1</b>	
<b>CCA 2,5/9-GL-5,08P26THR</b>	<b>19 59 13 4</b>	
<b>CCA 2,5/10-GL-5,08P26THR</b>	<b>19 59 14 7</b>	
<b>CCA 2,5/11-GL-5,08P26THR</b>	<b>19 59 15 0</b>	
<b>CCA 2,5/12-GL-5,08P26THR</b>	<b>19 59 16 3</b>	
<b>CCA 2,5/6-GR-5,08P26THR</b>	<b>19 59 24 4</b>	50
<b>CCA 2,5/7-GR-5,08P26THR</b>	<b>19 59 25 7</b>	
<b>CCA 2,5/8-GR-5,08P26THR</b>	<b>19 59 26 0</b>	
<b>CCA 2,5/9-GR-5,08P26THR</b>	<b>19 59 27 3</b>	
<b>CCA 2,5/10-GR-5,08P26THR</b>	<b>19 59 28 6</b>	
<b>CCA 2,5/11-GR-5,08P26THR</b>	<b>19 59 29 9</b>	
<b>CCA 2,5/12-GR-5,08P26THR</b>	<b>19 59 30 9</b>	
<b>CR-MSTB</b>	<b>17 34 40 1</b>	100
<b>CR-MSTB NAT HT</b>	<b>19 54 36 2</b>	100
<b>SK 5,08/3,8</b> (see COMBICON catalog)		

see description

5.08

1.5

1x1



CCA 2,5/...-GL-5,08P26THR



CCA 2,5/...-GL-5,08P26THR



CCA 2,5/...-GR-5,08P26THR



CCA 2,5/...-GR-5,08P26THR

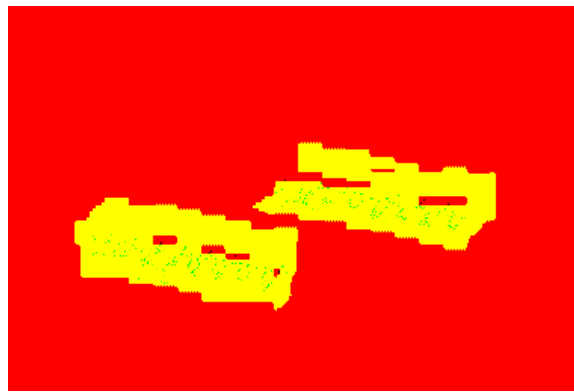
# CCA 2,5/...-GL(R)-5,08RNP26THR 5.08 mm Pitch



Bottom view, free space for solder paste, 0.5 mm deep

### Note:

COMBICON plug connectors may only be actuated in the no-load condition. If smaller loads need to be switched for operational reasons, experimental values are available on request.



Description	No. of pos.	Dim. a [mm]
<b>Header with engagement nose on one side,</b> plug-in direction parallel to the PCB, pin length 2.6 mm, 5.08 mm pitch, color: black	6	25.40
	7	30.48
	8	35.56
	9	40.64
	10	45.72
	11	50.80
<b>Header with engagement nose on one side,</b> plug-in direction parallel to the PCB, pin length 2.6 mm, 5.08 mm pitch, color: black	12	55.88
	6	25.40
	7	30.48
	8	35.56
	9	40.64
	10	45.72
	11	50.80
	12	55.88

(1) **Coding element**, inserted into the recess on the header after the reflow assembly process, red insulation material



(2) **HT coding element**, inserted into the recess on the header before the reflow process, made of high temperature resistant beige plastic



(3) **Marker card**, with 12 pcs. 10-section marker strips, white, self-adhesive, for 120 terminal blocks

### Technical data

Dimensions	
Pitch	[mm]
Hole diameter	[mm]
Pin dimensions	[mm]x[mm]

### Technical data in accordance with IEC/ DIN VDE

Insulating material group	-
Surge voltage category / contamination class	-/-
Rated voltage	[V]
Rated surge voltage	[kV]
Nominal current / cross section	[A]/[mm²]
Maximum load current / cross section	[A]/[mm²]

### Insulating material

Inflammability class in acc. with UL 94

Type	Order No.	Pcs./Pkt.
<b>CCA 2,5/6-GL-5,08RNP26THR</b>	<b>19 59 38 3</b>	50
<b>CCA 2,5/7-GL-5,08RNP26THR</b>	<b>19 59 39 6</b>	
<b>CCA 2,5/8-GL-5,08RNP26THR</b>	<b>19 59 40 6</b>	
<b>CCA 2,5/9-GL-5,08RNP26THR</b>	<b>19 59 41 9</b>	
<b>CCA 2,5/10-GL-5,08RNP26THR</b>	<b>19 59 42 2</b>	
<b>CCA 2,5/11-GL-5,08RNP26THR</b>	<b>19 59 43 5</b>	
<b>CCA 2,5/12-GL-5,08RNP26THR</b>	<b>19 59 44 8</b>	
<b>CCA 2,5/6-GR-5,08RNP26THR</b>	<b>19 59 52 9</b>	50
<b>CCA 2,5/7-GR-5,08RNP26THR</b>	<b>19 59 53 2</b>	
<b>CCA 2,5/8-GR-5,08RNP26THR</b>	<b>19 59 54 5</b>	
<b>CCA 2,5/9-GR-5,08RNP26THR</b>	<b>19 59 55 8</b>	
<b>CCA 2,5/10-GR-5,08RNP26THR</b>	<b>19 59 56 1</b>	
<b>CCA 2,5/11-GR-5,08RNP26THR</b>	<b>19 59 57 4</b>	
<b>CCA 2,5/12-GR-5,08RNP26THR</b>	<b>19 59 58 7</b>	
<b>CR-MSTB</b>	<b>17 34 40 1</b>	100
<b>CR-MSTB NAT HT</b>	<b>19 54 36 2</b>	100
<b>SK 5,08/3,8</b> (see COMBICON catalog)		

see description

5.08

1.5

1x1

III / 3

IIIa

II / 2

250

320

400

4

4

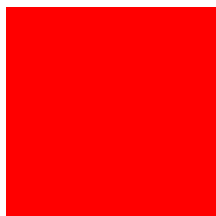
4

12 / -

12 / -

LCP

V0



CCA 2,5/...-GL-5,08RNP26THR



CCA 2,5/...-GL-5,08RNP26THR



CCA 2,5/...-GR-5,08RNP26THR



CCA 2,5/...-GR-5,08RNP26THR

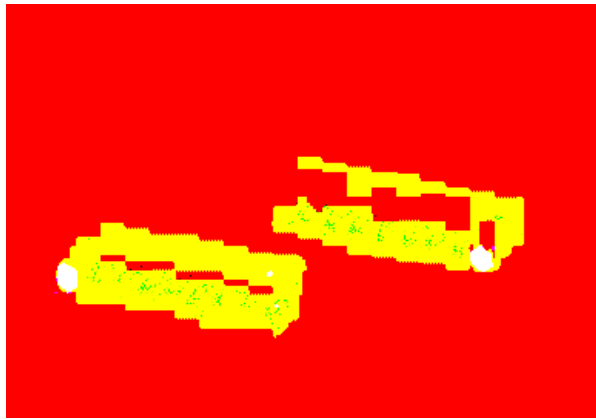
# CC 2,5/...-GFL(R)-5,08P26THR 5.08 mm Pitch




Bottom view, free space for solder paste, 0.5 mm deep


**Note:**

COMBICON plug connectors may only be actuated in the no-load condition. If smaller loads need to be switched for operational reasons, experimental values are available on request.



Description	No. of pos.	Dim. a [mm]
<b>Header with threaded flange on one side,</b> plug-in direction parallel to the PCB, pin length 2.6 mm, 5.08 mm pitch, color: black	6	25.40
	7	30.48
	8	35.56
	9	40.64
	10	45.72
	11	50.80
12	55.88	
<b>Header with threaded flange on one side,</b> plug-in direction parallel to the PCB, pin length 2.6 mm, 5.08 mm pitch, color: black	6	25.40
	7	30.48
	8	35.56
	9	40.64
	10	45.72
	11	50.80
12	55.88	

(1) **Coding element**, inserted into the recess on the header after the reflow assembly process, red insulation material 

(2) **HT coding element**, inserted into the recess on the header before the reflow process, made of high temperature resistant beige plastic 

(3) **Marker card**, with 12 pcs. 10-section marker strips, white, self-adhesive, for 120 terminal blocks

**Technical data**

Dimensions	
Pitch	[mm] 5.08
Hole diameter	[mm] 1.5
Pin dimensions	[mm]x[mm] 1x1

**Technical data in accordance with IEC/ DIN VDE**

Insulating material group	-
Surge voltage category / contamination class	-/-
Rated voltage	[V] 250
Rated surge voltage	[kV] 4
Nominal current / cross section	[A]/[mm²] 12 / -
Maximum load current / cross section	[A]/[mm²] 12 / -

**Insulating material**

Inflammability class in acc. with UL 94

Type	Order No.	Pcs./Pkt.
<b>CC 2,5/6-GFL-5,08P26THR</b>	19 56 30 2	50
<b>CC 2,5/7-GFL-5,08P26THR</b>	19 56 31 5	
<b>CC 2,5/8-GFL-5,08P26THR</b>	19 56 32 8	
<b>CC 2,5/9-GFL-5,08P26THR</b>	19 56 33 1	
<b>CC 2,5/10-GFL-5,08P26THR</b>	19 56 34 4	
<b>CC 2,5/11-GFL-5,08P26THR</b>	19 56 35 7	
<b>CC 2,5/12-GFL-5,08P26THR</b>	19 56 36 0	
<b>CC 2,5/6-GFR-5,08P26THR</b>	19 56 44 1	50
<b>CC 2,5/7-GFR-5,08P26THR</b>	19 56 45 4	
<b>CC 2,5/8-GFR-5,08P26THR</b>	19 56 46 7	
<b>CC 2,5/9-GFR-5,08P26THR</b>	19 56 47 0	
<b>CC 2,5/10-GFR-5,08P26THR</b>	19 56 48 3	
<b>CC 2,5/11-GFR-5,08P26THR</b>	19 56 49 6	
<b>CC 2,5/12-GFR-5,08P26THR</b>	19 56 50 6	
<b>CR-MSTB</b>	17 34 40 1	100
<b>CR-MSTB NAT HT</b>	19 54 36 2	100
<b>SK 5,08/3,8</b> (see COMBICON catalog)		

see description

5.08

1.5

1x1

III / 3

250

4

12 / -

12 / -

LCP

V0



CC 2,5/...-GFL-5,08P26THR



CC 2,5/...-GFR-5,08P26THR



CC 2,5/...-GFL-5,08P26THR



CC 2,5/...-GFR-5,08P26THR

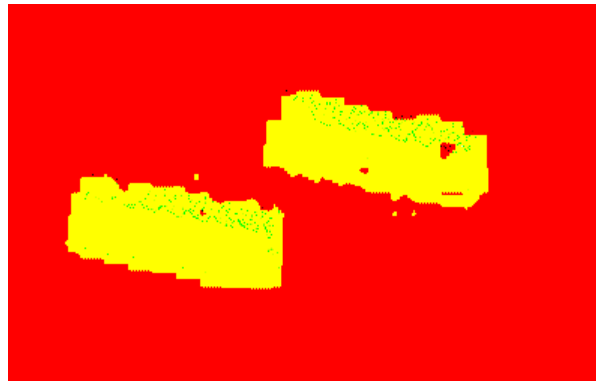
# CCVA 2,5/...-GL(R)-5,08P26THR 5.08 mm Pitch




Bottom view, free space for solder paste, 0.55 mm deep

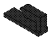
**Note:**

COMBICON plug connectors may only be actuated in the no-load condition. If smaller loads need to be switched for operational reasons, experimental values are available on request.



Description	No. of pos.	Dim. a [mm]
<b>Header with panel on one side,</b> plug-in direction vertical to the PCB, pin length 2.6 mm, 5.08 mm pitch, color: black	6	25.40
	7	30.48
	8	35.56
	9	40.64
	10	45.72
	12	55.88
<b>Header with panel on one side,</b> plug-in direction vertical to the PCB, pin length 2.6 mm, 5.08 mm pitch, color: black	6	25.40
	7	30.48
	8	35.56
	9	40.64
	10	45.72
	12	55.88

(1) **Coding element**, inserted into the recess on the header after the reflow assembly process, red insulation material 

(2) **HT coding element**, inserted into the recess on the header before the reflow process, made of high temperature resistant beige plastic 

(3) **Marker card**, with 12 pcs. 10-section marker strips, white, self-adhesive, for 120 terminal blocks

**Technical data**

Dimensions	
Pitch	[mm]
Hole diameter	[mm]
Pin dimensions	[mm]x[mm]

**Technical data in accordance with IEC/ DIN VDE**

Insulating material group	-
Surge voltage category / contamination class	-/-
Rated voltage	[V]
Rated surge voltage	[kV]
Nominal current / cross section	[A]/[mm²]
Maximum load current / cross section	[A]/[mm²]

**Insulating material**

Inflammability class in acc. with UL 94

Type	Order No.	Pcs./Pkt.
<b>CCVA 2,5/6-GL-5,08P26THR</b>	<b>19 59 94 3</b>	50
<b>CCVA 2,5/7-GL-5,08P26THR</b>	<b>19 59 95 6</b>	
<b>CCVA 2,5/8-GL-5,08P26THR</b>	<b>19 59 96 9</b>	
<b>CCVA 2,5/9-GL-5,08P26THR</b>	<b>19 59 97 2</b>	
<b>CCVA 2,5/10-GL-5,08P26THR</b>	<b>19 59 98 5</b>	
<b>CCVA 2,5/11-GL-5,08P26THR</b>	<b>19 59 99 8</b>	
<b>CCVA 2,5/12-GL-5,08P26THR</b>	<b>19 60 00 0</b>	
<b>CCVA 2,5/6-GR-5,08P26THR</b>	<b>19 60 12 3</b>	50
<b>CCVA 2,5/7-GR-5,08P26THR</b>	<b>19 60 13 6</b>	
<b>CCVA 2,5/8-GR-5,08P26THR</b>	<b>19 60 14 9</b>	
<b>CCVA 2,5/9-GR-5,08P26THR</b>	<b>19 60 15 2</b>	
<b>CCVA 2,5/10-GR-5,08P26THR</b>	<b>19 60 16 5</b>	
<b>CCVA 2,5/11-GR-5,08P26THR</b>	<b>19 60 17 8</b>	
<b>CCVA 2,5/12-GR-5,08P26THR</b>	<b>19 60 18 1</b>	
<b>CR-MSTB</b>	<b>17 34 40 1</b>	100
<b>CR-MSTB NAT HT</b>	<b>19 54 36 2</b>	100
<b>SK 5,08/3,8</b> (see COMBICON catalog)		

see description

5.08

1.5

1x1

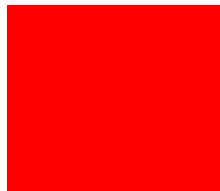
III / 3	IIIa	II / 2
250	320	400
4	4	4

12 / -

12 / -

LCP

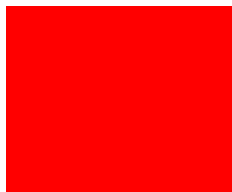
V0



CCVA 2,5/...-GL-5,08P26THR



CCVA 2,5/...-GL-5,08P26THR



CCVA 2,5/...-GR-5,08P26THR



CCVA 2,5/...-GR-5,08P26THR

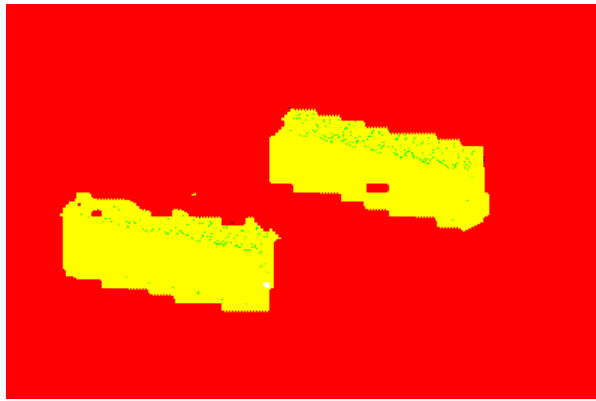
# CCVA 2,5/...-GL(R)-5,08RNP26THR 5.08 mm Pitch



Bottom view, free space for solder paste, 0.55 mm deep

### Note:

COMBICON plug connectors may only be actuated in the no-load condition. If smaller loads need to be switched for operational reasons, experimental values are available on request.



Description	No. of pos.	Dim. a [mm]
<b>Header with engagement nose on one side,</b> plug-in direction vertical to the PCB, pin length 2.6 mm, 5.08 mm pitch, color: black	6	25.40
	7	30.48
	8	35.56
	9	40.64
	10	45.72
	11	50.80
<b>Header with engagement nose on one side,</b> plug-in direction vertical to the PCB, pin length 2.6 mm, 5.08 mm pitch, color: black	12	55.88
	6	25.40
	7	30.48
	8	35.56
	9	40.64
	10	45.72
	11	50.80
	12	55.88

(1) **Coding element**, inserted into the recess on the header after the reflow assembly process, red insulation material



(2) **HT coding element**, inserted into the recess on the header before the reflow process, made of high temperature resistant beige plastic



(3) **Marker card**, with 12 pcs. 10-section marker strips, white, self-adhesive, for 120 terminal blocks

### Technical data

Dimensions	
Pitch	[mm]
Hole diameter	[mm]
Pin dimensions	[mm]x[mm]

### Technical data in accordance with IEC/ DIN VDE

Insulating material group	-
Surge voltage category / contamination class	-/-
Rated voltage	[V]
Rated surge voltage	[kV]
Nominal current / cross section	[A]/[mm²]
Maximum load current / cross section	[A]/[mm²]

### Insulating material

Inflammability class in acc. with UL 94

Type	Order No.	Pcs./Pkt.
<b>CCVA 2,5/6-GL-5,08RNP26THR</b>	<b>19 60 26 2</b>	50
<b>CCVA 2,5/7-GL-5,08RNP26THR</b>	<b>19 60 27 5</b>	
<b>CCVA 2,5/8-GL-5,08RNP26THR</b>	<b>19 60 28 8</b>	
<b>CCVA 2,5/9-GL-5,08RNP26THR</b>	<b>19 60 29 1</b>	
<b>CCVA 2,5/10-GL-5,08RNP26THR</b>	<b>19 60 31 4</b>	
<b>CCVA 2,5/11-GL-5,08RNP26THR</b>	<b>19 60 32 7</b>	
<b>CCVA 2,5/12-GL-5,08RNP26THR</b>	<b>19 60 33 0</b>	
<b>CCVA 2,5/6-GR-5,08RNP26THR</b>	<b>19 60 41 1</b>	50
<b>CCVA 2,5/7-GR-5,08RNP26THR</b>	<b>19 60 42 4</b>	
<b>CCVA 2,5/8-GR-5,08RNP26THR</b>	<b>19 60 43 7</b>	
<b>CCVA 2,5/9-GR-5,08RNP26THR</b>	<b>19 60 44 0</b>	
<b>CCVA 2,5/10-GR-5,08RNP26THR</b>	<b>19 60 45 3</b>	
<b>CCVA 2,5/11-GR-5,08RNP26THR</b>	<b>19 60 46 6</b>	
<b>CCVA 2,5/12-GR-5,08RNP26THR</b>	<b>19 60 47 9</b>	
<b>CR-MSTB</b>	<b>17 34 40 1</b>	100
<b>CR-MSTB NAT HT</b>	<b>19 54 36 2</b>	100
<b>SK 5,08/3,8</b> (see COMBICON catalog)		

see description

5.08

1.5

1x1

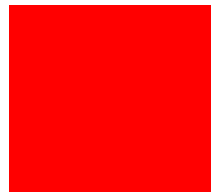
III / 3	IIIa	II / 2
250	320	400
4	4	4

12 / -

12 / -

LCP

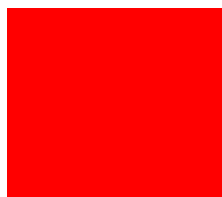
V0



CCVA 2,5/...-GL-5,08RNP26THR



CCVA 2,5/...-GL-5,08RNP26THR



CCVA 2,5/...-GR-5,08RNP26THR



CCVA 2,5/...-GR-5,08RNP26THR

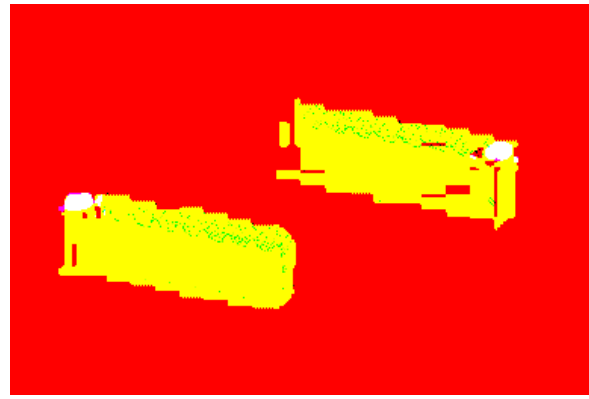
# CCV 2,5/...-GFL(R)-5,08P26THR 5.08 mm Pitch




Bottom view, free space for solder paste, 0.55 mm deep


**Note:**

COMBICON plug connectors may only be actuated in the no-load condition. If smaller loads need to be switched for operational reasons, experimental values are available on request.



Description	No. of pos.	Dim. a [mm]
<b>Header with threaded flange on one side,</b> plug-in direction vertical to the PCB, pin length 2.6 mm, 5.08 mm pitch, color: black	6	25.40
	7	30.48
	8	35.56
	9	40.64
	10	45.72
	11	50.80
<b>Header with threaded flange on one side,</b> plug-in direction vertical to the PCB, pin length 2.6 mm, 5.08 mm pitch, color: black	12	55.88
	6	25.40
	7	30.48
	8	35.56
	9	40.64
	10	45.72
	11	50.80
	12	55.88

(1) **Coding element**, inserted into the recess on the header after the reflow assembly process, red insulation material 

(2) **HT coding element**, inserted into the recess on the header before the reflow process, made of high temperature resistant beige plastic 

(3) **Marker card**, with 12 pcs. 10-section marker strips, white, self-adhesive, for 120 terminal blocks

**Technical data**

Dimensions	
Pitch	[mm]
Hole diameter	[mm]
Pin dimensions	[mm]x[mm]

**Technical data in accordance with IEC/ DIN VDE**

Insulating material group	-
Surge voltage category / contamination class	-/-
Rated voltage	[V]
Rated surge voltage	[kV]
Nominal current / cross section	[A]/[mm²]
Maximum load current / cross section	[A]/[mm²]

**Insulating material**

Inflammability class in acc. with UL 94

Type	Order No.	Pcs./Pkt.
<b>CCV 2,5/6-GFL-5,08P26THR</b>	<b>19 59 66 8</b>	50
<b>CCV 2,5/7-GFL-5,08P26THR</b>	<b>19 59 67 1</b>	
<b>CCV 2,5/8-GFL-5,08P26THR</b>	<b>19 59 68 4</b>	
<b>CCV 2,5/9-GFL-5,08P26THR</b>	<b>19 59 69 7</b>	
<b>CCV 2,5/10-GFL-5,08P26THR</b>	<b>19 59 70 7</b>	
<b>CCV 2,5/11-GFL-5,08P26THR</b>	<b>19 59 71 0</b>	
<b>CCV 2,5/12-GFL-5,08P26THR</b>	<b>19 59 72 3</b>	
<b>CCV 2,5/6-GFR-5,08P26THR</b>	<b>19 59 80 4</b>	50
<b>CCV 2,5/7-GFR-5,08P26THR</b>	<b>19 59 81 7</b>	
<b>CCV 2,5/8-GFR-5,08P26THR</b>	<b>19 59 82 0</b>	
<b>CCV 2,5/9-GFR-5,08P26THR</b>	<b>19 59 83 3</b>	
<b>CCV 2,5/10-GFR-5,08P26THR</b>	<b>19 59 84 6</b>	
<b>CCV 2,5/11-GFR-5,08P26THR</b>	<b>19 59 85 9</b>	
<b>CCV 2,5/12-GFR-5,08P26THR</b>	<b>19 59 86 2</b>	
<b>CR-MSTB</b>	<b>17 34 40 1</b>	100
<b>CR-MSTB NAT HT</b>	<b>19 54 36 2</b>	100
<b>SK 5,08/3,8</b> (see COMBICON catalog)		

see description

5.08

1.5

1x1

III / 3	IIIa	II / 2
250	320	400
4	4	4

12 / -

12 / -

LCP

V0



CCV 2,5/...-GFL-5,08P26THR



CCV 2,5/...-GFL-5,08P26THR



CCV 2,5/...-GFR-5,08P26THR



CCV 2,5/...-GFR-5,08P26THR



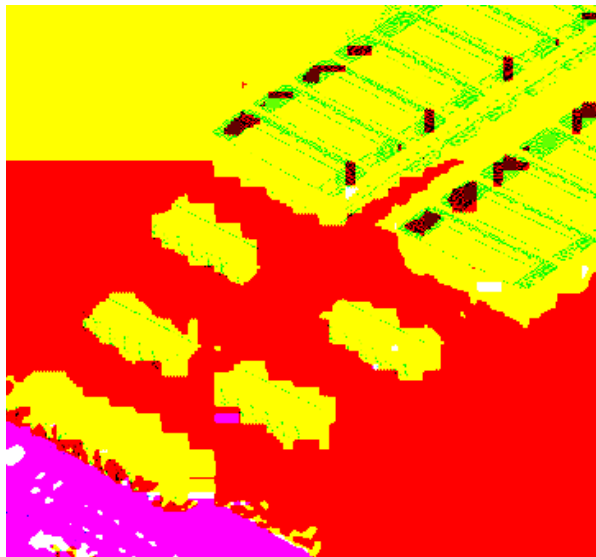
## TWO IN ONE COMBICON headers, taped, 5.08 mm pitch, horizontal and vertical designs

---

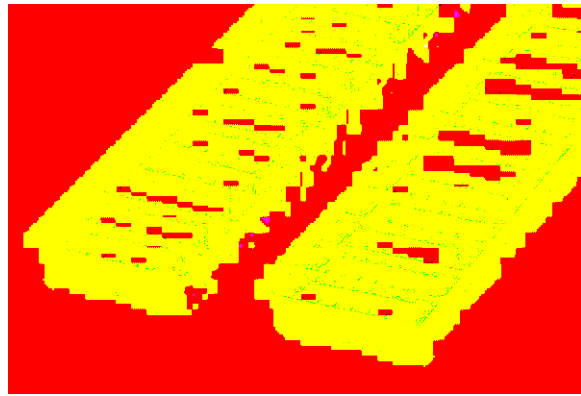
With the "TWO IN ONE" solution for COMBICON THR pin strips, it is now possible to have components with a high number of positions, i.e. 12 - 24. Packaging in accordance with modern industrial standards, particularly tape widths of 56 to 88 mm, remains unchanged. The same processing equipment and familiar requirements for the mounting process, as already apply for pin strips with a low number of positions, facilitate integration in existing production processes.

The THR pin strip is assembled on the PCB from two segments. Each segment is packaged in a tape. The inner side panels have not been added to the segments. This makes room for the housings to be mounted and aligned without contact. After reflow soldering, one has the same properties as with single section pin strips, i.e. plugging remains as convenient as before.

All pin strips are made of high temperature resistant Liquid Crystal Polymer (LCP) and are suitable for use in lead-free solder processes with high peak temperatures.

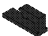
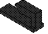


# CCA 2,5/...-GL(R)-5,08P26THRR... 5.08 mm Pitch



### Note:

COMBICON plug connectors may only be actuated in the no-load condition. If smaller loads need to be switched for operational reasons, experimental values are available on request.

Description	No. of pos.	Dim. a [mm]	Type	Order No.	Pcs./Pkt.
<b>Taped header with panel on one side,</b> plug-in direction parallel to the PCB, pin length 2.6 mm, 5.08 mm pitch, color: black	6	25.40	<b>CCA 2,5/6-GL-5,08P26THRR56</b>	<b>19 59 17 6</b>	330
	7	30.48	<b>CCA 2,5/7-GL-5,08P26THRR56</b>	<b>19 59 18 9</b>	330
	8	35.56	<b>CCA 2,5/8-GL-5,08P26THRR56</b>	<b>19 59 19 2</b>	330
	9	40.64	<b>CCA 2,5/9-GL-5,08P26THRR88</b>	<b>19 59 20 2</b>	240
	10	45.72	<b>CCA 2,5/10-GL-5,08P26THRR88</b>	<b>19 59 21 5</b>	240
	11	50.80	<b>CCA 2,5/11-GL-5,08P26THRR88</b>	<b>19 59 22 8</b>	240
12	55.88	<b>CCA 2,5/12-GL-5,08P26THRR88</b>	<b>19 59 23 1</b>	240	
<b>Taped header with panel on one side,</b> plug-in direction parallel to the PCB, pin length 2.6 mm, 5.08 mm pitch, color: black	6	25.40	<b>CCA 2,5/6-GR-5,08P26THRR56</b>	<b>19 59 31 2</b>	330
	7	30.48	<b>CCA 2,5/7-GR-5,08P26THRR56</b>	<b>19 59 32 5</b>	330
	8	35.56	<b>CCA 2,5/8-GR-5,08P26THRR56</b>	<b>19 59 33 8</b>	330
	9	40.64	<b>CCA 2,5/9-GR-5,08P26THRR88</b>	<b>19 59 34 1</b>	240
	10	45.72	<b>CCA 2,5/10-GR-5,08P26THRR88</b>	<b>19 59 35 4</b>	240
	11	50.80	<b>CCA 2,5/11-GR-5,08P26THRR88</b>	<b>19 59 36 7</b>	240
12	55.88	<b>CCA 2,5/12-GR-5,08P26THRR88</b>	<b>19 59 37 0</b>	240	
(1) <b>Coding element</b> , inserted into the recess on the header after the reflow assembly process, red insulation material			<b>CR-MSTB</b>	<b>17 34 40 1</b>	100
(2) <b>HT coding element</b> <sup>1)</sup> , inserted into the recess on the header before the reflow process, made of high temperature resistant beige plastic			<b>CR-MSTB NAT HT</b>	<b>19 54 36 2</b>	100
(3) <b>Marker card</b> , with 12 pcs. 10-section marker strips, white, self-adhesive, for 120 terminal blocks			<b>SK 5,08/3,8</b> (see COMBICON catalog)		

### Technical data

Dimensions		
Pitch	[mm]	5.08
Hole diameter	[mm]	1.5
Pin dimensions	[mm]x[mm]	1x1

### Technical data in accordance with IEC/ DIN VDE

Insulating material group	–	IIIa	III / 2	II / 2
Surge voltage category / contamination class	–/–	III / 3	III / 2	II / 2
Rated voltage	[V]	250	320	400
Rated surge voltage	[kV]	4	4	4
Nominal current / cross section	[A]/[mm <sup>2</sup> ]		12 / –	
Maximum load current / cross section	[A]/[mm <sup>2</sup> ]		12 / –	

### Insulating material

Inflammability class in acc. with UL 94

see description

5.08

1.5

1x1

IIIa

III / 2

400

4

12 / –

12 / –

LCP

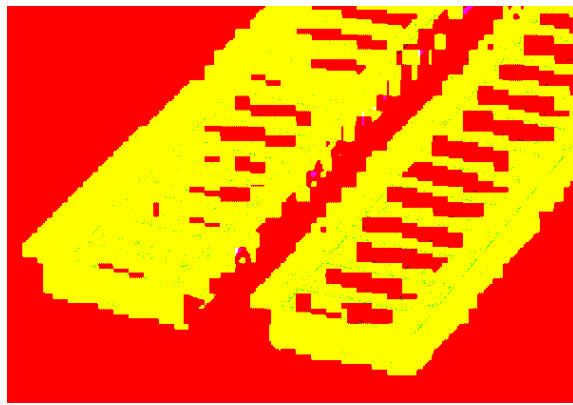
V0

Dimensional drawings, see page 2

Dimensional drawings of tapes, see page 12.



<sup>1)</sup> Pre-coded taped articles are available on request.

# CCA 2,5/...-GL(R)-5,08RNP26THRR... 5.08 mm Pitch



## Note:

COMBICON plug connectors may only be actuated in the no-load condition. If smaller loads need to be switched for operational reasons, experimental values are available on request.

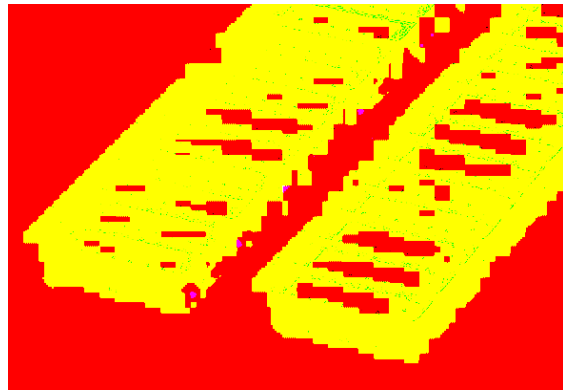
Description	No. of pos.	Dim. a [mm]	Type	Order No.	Pcs./Pkt.
<b>Taped header with engagement nose on one side</b> , plug-in direction parallel to the PCB, pin length 2.6 mm, 5.08 mm pitch, color: black	6	25.40	<b>CCA 2,5/6-GL-5,08RNP26THRR56</b>	<b>19 59 45 1</b>	330
	7	30.48	<b>CCA 2,5/7-GL-5,08RNP26THRR56</b>	<b>19 59 46 4</b>	330
	8	35.56	<b>CCA 2,5/8-GL-5,08RNP26THRR88</b>	<b>19 59 47 7</b>	240
	9	40.64	<b>CCA 2,5/9-GL-5,08RNP26THRR88</b>	<b>19 59 48 0</b>	240
	10	45.72	<b>CCA 2,5/10-GL-5,08RNP26THRR88</b>	<b>19 59 49 3</b>	240
	11	50.80	<b>CCA 2,5/11-GL-5,08RNP26THRR88</b>	<b>19 59 50 3</b>	240
12	55.88	<b>CCA 2,5/12-GL-5,08RNP26THRR88</b>	<b>19 59 51 6</b>	240	
<b>Taped header with engagement nose on one side</b> , plug-in direction parallel to the PCB, pin length 2.6 mm, 5.08 mm pitch, color: black	6	25.40	<b>CCA 2,5/6-GR-5,08RNP26THRR56</b>	<b>19 59 59 0</b>	330
	7	30.48	<b>CCA 2,5/7-GR-5,08RNP26THRR56</b>	<b>19 59 60 0</b>	330
	8	35.56	<b>CCA 2,5/8-GR-5,08RNP26THRR88</b>	<b>19 59 61 3</b>	240
	9	40.64	<b>CCA 2,5/9-GR-5,08RNP26THRR88</b>	<b>19 59 62 6</b>	240
	10	45.72	<b>CCA 2,5/10-GR-5,08RNP26THRR88</b>	<b>19 59 63 9</b>	240
	11	50.80	<b>CCA 2,5/11-GR-5,08RNP26THRR88</b>	<b>19 59 64 2</b>	240
12	55.88	<b>CCA 2,5/12-GR-5,08RNP26THRR88</b>	<b>19 59 65 5</b>	240	
(1) <b>Coding element</b> , inserted into the recess on the header after the reflow assembly process, red insulation material			<b>CR-MSTB</b>	<b>17 34 40 1</b>	100
(2) <b>HT coding element</b> <sup>1)</sup> , inserted into the recess on the header before the reflow process, made of high temperature resistant beige plastic			<b>CR-MSTB NAT HT</b>	<b>19 54 36 2</b>	100
(3) <b>Marker card</b> , with 12 pcs. 10-section marker strips, white, self-adhesive, for 120 terminal blocks			<b>SK 5,08/3,8</b> (see COMBICON catalog)		
<b>Technical data</b>			see description		
Dimensions					
Pitch		[mm]		5.08	
Hole diameter		[mm]		1.5	
Pin dimensions		[mm]x[mm]		1x1	
<b>Technical data in accordance with IEC/ DIN VDE</b>					
Insulating material group		–		IIIa	
Surge voltage category / contamination class		–/–	III / 3	III / 2	II / 2
Rated voltage		[V]	250	320	400
Rated surge voltage		[kV]	4	4	4
Nominal current / cross section		[A]/[mm <sup>2</sup> ]		12 / –	
Maximum load current / cross section		[A]/[mm <sup>2</sup> ]		12 / –	
<b>Insulating material</b>				LCP	
Inflammability class in acc. with UL 94				V0	

Dimensional drawings, see 3

Dimensional drawings of tapes, see page 12.


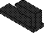
<sup>1)</sup> Pre-coded taped articles are available on request.

# CC 2,5/...-GFL(R)-5,08P26THRR... 5.08 mm Pitch



**Note:**

COMBICON plug connectors may only be actuated in the no-load condition. If smaller loads need to be switched for operational reasons, experimental values are available on request.

Description	No. of pos.	Dim. a [mm]	Type	Order No.	Pcs./Pkt.
<b>Taped header with threaded flange on one side</b> , plug-in direction parallel to the PCB, pin length 2.6 mm, 5.08 mm pitch, color: black	6	25.40	<b>CC 2,5/6-GFL-5,08P26THRR56</b>	<b>19 56 37 3</b>	330
	7	30.48	<b>CC 2,5/7-GFL-5,08P26THRR56</b>	<b>19 56 38 6</b>	330
	8	35.56	<b>CC 2,5/8-GFL-5,08P26THRR88</b>	<b>19 56 39 9</b>	240
	9	40.64	<b>CC 2,5/9-GFL-5,08P26THRR88</b>	<b>19 56 40 9</b>	240
	10	45.72	<b>CC 2,5/10-GFL-5,08P26THRR88</b>	<b>19 56 41 2</b>	240
	11	50.80	<b>CC 2,5/11-GFL-5,08P26THRR88</b>	<b>19 56 42 5</b>	240
12	55.88	<b>CC 2,5/12-GFL-5,08P26THRR88</b>	<b>19 56 43 8</b>	240	
<b>Taped header with threaded flange on one side</b> , plug-in direction parallel to the PCB, pin length 2.6 mm, 5.08 mm pitch, color: black	6	25.40	<b>CC 2,5/6-GFR-5,08P26THRR56</b>	<b>19 56 51 9</b>	330
	7	30.48	<b>CC 2,5/7-GFR-5,08P26THRR56</b>	<b>19 56 52 2</b>	330
	8	35.56	<b>CC 2,5/8-GFR-5,08P26THRR88</b>	<b>19 56 53 5</b>	240
	9	40.64	<b>CC 2,5/9-GFR-5,08P26THRR88</b>	<b>19 56 54 8</b>	240
	10	45.72	<b>CC 2,5/10-GFR-5,08P26THRR88</b>	<b>19 56 55 1</b>	240
	11	50.80	<b>CC 2,5/11-GFR-5,08P26THRR88</b>	<b>19 56 56 4</b>	240
12	55.88	<b>CC 2,5/12-GFR-5,08P26THRR88</b>	<b>19 56 57 7</b>	240	
(1) <b>Coding element</b> , inserted into the recess on the header after the reflow assembly process, red insulation material			<b>CR-MSTB</b>	<b>17 34 40 1</b>	100
(2) <b>HT coding element</b> <sup>1)</sup> , inserted into the recess on the header before the reflow process, made of high temperature resistant beige plastic			<b>CR-MSTB NAT HT</b>	<b>19 54 36 2</b>	100
(3) <b>Marker card</b> , with 12 pcs. 10-section marker strips, white, self-adhesive, for 120 terminal blocks			<b>SK 5,08/3,8</b> (see COMBICON catalog)		

**Technical data**

Dimensions		
Pitch	[mm]	5.08
Hole diameter	[mm]	1.5
Pin dimensions	[mm]x[mm]	1x1

**Technical data in accordance with IEC/ DIN VDE**

Insulating material group	–	IIIa	III / 2	II / 2
Surge voltage category / contamination class	–/–	III / 3	III / 2	II / 2
Rated voltage	[V]	250	320	400
Rated surge voltage	[kV]	4	4	4
Nominal current / cross section	[A]/[mm²]		12 / –	
Maximum load current / cross section	[A]/[mm²]		12 / –	

**Insulating material**

Inflammability class in acc. with UL 94

see description

5.08

1.5

1x1

IIIa

III / 2

320

4

12 / –

12 / –

LCP

V0

**Dimensional drawings, see page 4.**

**Dimensional drawings of tapes, see page 12.**

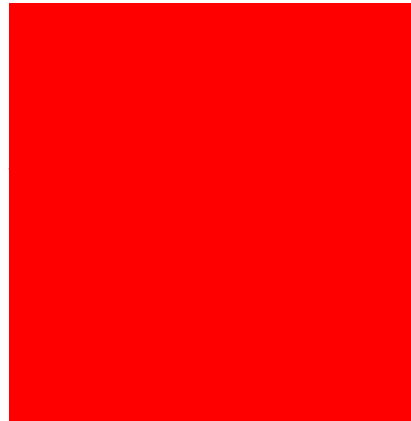
<sup>1)</sup> **Pre-coded taped articles are available on request.**

**TWO IN ONE COMBICON**  
**Headers, taped, pitch 5.08 mm,**  
**horizontal designs**

Feeder direction, tape width 56 mm (R56), even nos. of positions



Feeder direction, tape width 56 mm (R56), odd nos. of positions



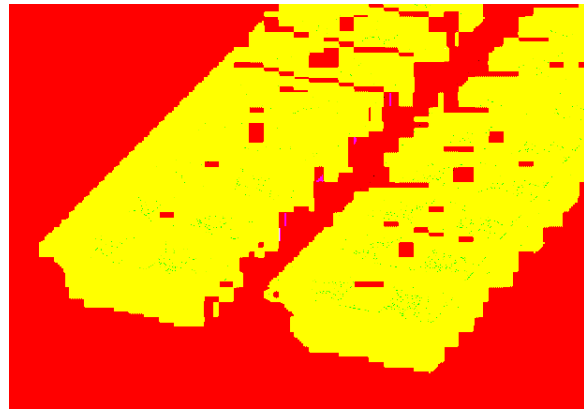
Feeder direction, tape width 88 mm (R88), even nos. of positions



Feeder direction, tape width 88 mm (R88), odd nos. of positions

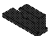
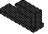


# CCVA 2,5/...-GL(R)-5,08P26THRR... 5.08 mm Pitch



**Note:**

COMBICON plug connectors may only be actuated in the no-load condition. If smaller loads need to be switched for operational reasons, experimental values are available on request.

Description	No. of pos.	Dim. a [mm]	Type	Order No.	Pcs./Pkt.
<b>Taped header with panel on one side,</b> plug-in direction vertical to the PCB, pin length 2.6 mm, 5.08 mm pitch, color: black	6	25.40	<b>CCVA 2,5/6-GL-5,08P26THRR56</b>	<b>19 60 04 2</b>	140
	7	30.48	<b>CCVA 2,5/7-GL-5,08P26THRR56</b>	<b>19 60 05 5</b>	
	8	35.56	<b>CCVA 2,5/8-GL-5,08P26THRR56</b>	<b>19 60 06 8</b>	
	9	40.64	<b>CCVA 2,5/9-GL-5,08P26THRR88</b>	<b>19 60 07 1</b>	
	10	45.72	<b>CCVA 2,5/10-GL-5,08P26THRR88</b>	<b>19 60 08 4</b>	
	11	50.80	<b>CCVA 2,5/11-GL-5,08P26THRR88</b>	<b>19 60 09 7</b>	
12	55.88	<b>CCVA 2,5/12-GL-5,08P26THRR88</b>	<b>19 60 11 0</b>		
<b>Taped header with panel on one side,</b> plug-in direction vertical to the PCB, pin length 2.6 mm, 5.08 mm pitch, color: black	6	25.40	<b>CCVA 2,5/6-GR-5,08P26THRR56</b>	<b>19 60 19 4</b>	140
	7	30.48	<b>CCVA 2,5/7-GR-5,08P26THRR56</b>	<b>19 60 20 4</b>	
	8	35.56	<b>CCVA 2,5/8-GR-5,08P26THRR56</b>	<b>19 60 21 7</b>	
	9	40.64	<b>CCVA 2,5/9-GR-5,08P26THRR88</b>	<b>19 60 22 0</b>	
	10	45.72	<b>CCVA 2,5/10-GR-5,08P26THRR88</b>	<b>19 60 23 3</b>	
	11	50.80	<b>CCVA 2,5/11-GR-5,08P26THRR88</b>	<b>19 60 24 6</b>	
12	55.88	<b>CCVA 2,5/12-GR-5,08P26THRR88</b>	<b>19 60 25 9</b>		
(1) <b>Coding element</b> , inserted into the recess on the header after the reflow assembly process, red insulation material			<b>CR-MSTB</b>	<b>17 34 40 1</b>	100
(2) <b>HT coding element</b> <sup>1)</sup> , inserted into the recess on the header before the reflow process, made of high temperature resistant beige plastic			<b>CR-MSTB NAT HT</b>	<b>19 54 36 2</b>	100
(3) <b>Marker card</b> , with 12 pcs. 10-section marker strips, white, self-adhesive, for 120 terminal blocks			<b>SK 5,08/3,8</b> (see COMBICON catalog)		

**Technical data**

Dimensions	
Pitch	[mm] 5.08
Hole diameter	[mm] 1.5
Pin dimensions	[mm]x[mm] 1x1

**Technical data in accordance with IEC/ DIN VDE**

Insulating material group	-	IIIa	III / 2	II / 2
Surge voltage category / contamination class	-/-	III / 3	III / 2	II / 2
Rated voltage	[V] 250	250	320	400
Rated surge voltage	[kV] 4	4	4	4
Nominal current / cross section	[A]/[mm²] 12 / -	12 / -	12 / -	12 / -
Maximum load current / cross section	[A]/[mm²] 12 / -	12 / -	12 / -	12 / -

**Insulating material**

Inflammability class in acc. with UL 94

see description

5.08

1.5

1x1

IIIa

III / 2

250

4

4

12 / -

12 / -

LCP

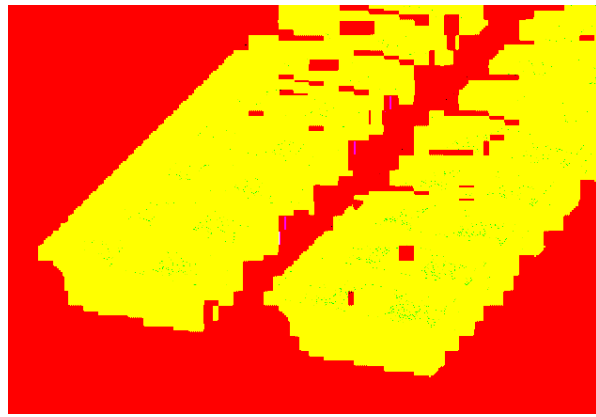
V0

**Dimensional drawings, see page 5**

**Dimensional drawings of tapes, see page 16.**

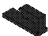
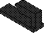
<sup>1)</sup> Pre-coded taped articles are available on request.

# CCVA 2,5/...-GL(R)-5,08RNP26THRR... 5.08 mm Pitch



**Note:**

COMBICON plug connectors may only be actuated in the no-load condition. If smaller loads need to be switched for operational reasons, experimental values are available on request.

Description	No. of pos.	Dim. a [mm]	Type	Order No.	Pcs./Pkt.
<b>Taped header with engagement nose on one side</b> , plug-in direction vertical to the PCB, pin length 2.6 mm, 5.08 mm pitch, color: black	6	25.40	<b>CCVA 2,5/6-GL-5,08RNP26THRR56</b>	<b>19 60 34 3</b>	140
	7	30.48	<b>CCVA 2,5/7-GL-5,08RNP26THRR56</b>	<b>19 60 35 6</b>	
	8	35.56	<b>CCVA 2,5/8-GL-5,08RNP26THRR88</b>	<b>19 60 36 9</b>	
	9	40.64	<b>CCVA 2,5/9-GL-5,08RNP26THRR88</b>	<b>19 60 37 2</b>	
	10	45.72	<b>CCVA 2,5/10-GL-5,08RNP26THRR88</b>	<b>19 60 38 5</b>	
	11	50.80	<b>CCVA 2,5/11-GL-5,08RNP26THRR88</b>	<b>19 60 39 8</b>	
12	55.88	<b>CCVA 2,5/12-GL-5,08RNP26THRR88</b>	<b>19 60 40 8</b>		
<b>Taped header with engagement nose on one side</b> , plug-in direction vertical to the PCB, pin length 2.6 mm, 5.08 mm pitch, color: black	6	25.40	<b>CCVA 2,5/6-GR-5,08RNP26THRR56</b>	<b>19 60 48 2</b>	140
	7	30.48	<b>CCVA 2,5/7-GR-5,08RNP26THRR56</b>	<b>19 60 49 5</b>	
	8	35.56	<b>CCVA 2,5/8-GR-5,08RNP26THRR88</b>	<b>19 60 50 5</b>	
	9	40.64	<b>CCVA 2,5/9-GR-5,08RNP26THRR88</b>	<b>19 60 51 8</b>	
	10	45.72	<b>CCVA 2,5/10-GR-5,08RNP26THRR88</b>	<b>19 60 52 1</b>	
	11	50.80	<b>CCVA 2,5/11-GR-5,08RNP26THRR88</b>	<b>19 60 53 4</b>	
12	55.88	<b>CCVA 2,5/12-GR-5,08RNP26THRR88</b>	<b>19 60 54 7</b>		
(1) <b>Coding element</b> , inserted into the recess on the header after the reflow assembly process, red insulation material			<b>CR-MSTB</b>	<b>17 34 40 1</b>	100
(2) <b>HT coding element<sup>1)</sup></b> , inserted into the recess on the header before the reflow process, made of high temperature resistant beige plastic			<b>CR-MSTB NAT HT</b>	<b>19 54 36 2</b>	100
(3) <b>Marker card</b> , with 12 pcs. 10-section marker strips, white, self-adhesive, for 120 terminal blocks			<b>SK 5,08/3,8</b> (see COMBICON catalog)		

**Technical data**

Dimensions		
Pitch	[mm]	5.08
Hole diameter	[mm]	1.5
Pin dimensions	[mm]x[mm]	1x1

**Technical data in accordance with IEC/ DIN VDE**

Insulating material group	–	IIIa	III / 2	II / 2
Surge voltage category / contamination class	–/–	III / 3	320	400
Rated voltage	[V]	250	4	4
Rated surge voltage	[kV]	4	12 / –	12 / –
Nominal current / cross section	[A]/[mm <sup>2</sup> ]			
Maximum load current / cross section	[A]/[mm <sup>2</sup> ]			

**Insulating material**

Inflammability class in acc. with UL 94

see description

5.08

1.5

1x1

IIIa

III / 2

320

4

4

12 / –

12 / –

LCP

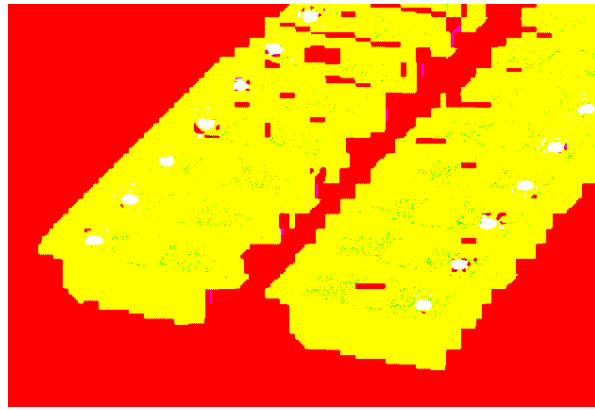
V0

**Dimensional drawings, see page 6.**

**Dimensional drawings of tapes, see page 16.**

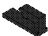
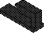
<sup>1)</sup> Pre-coded taped articles are available on request.

# CCV 2,5/...-GFL(R)-5,08P26THRR... 5.08 mm Pitch



## Note:

COMBICON plug connectors may only be actuated in the no-load condition. If smaller loads need to be switched for operational reasons, experimental values are available on request.

Description	No. of pos.	Dim. a [mm]	Type	Order No.	Pcs./Pkt.
<b>Taped header with threaded flange on one side</b> , plug-in direction vertical to the PCB, pin length 2.6 mm, 5.08 mm pitch, color: black	6	25.40	<b>CCV 2,5/6-GFL-5,08P26THRR56</b>	<b>19 59 73 6</b>	140
	7	30.48	<b>CCV 2,5/7-GFL-5,08P26THRR56</b>	<b>19 59 74 9</b>	
	8	35.56	<b>CCV 2,5/8-GFL-5,08P26THRR88</b>	<b>19 59 75 2</b>	
	9	40.64	<b>CCV 2,5/9-GFL-5,08P26THRR88</b>	<b>19 59 76 5</b>	
	10	45.72	<b>CCV 2,5/10-GFL-5,08P26THRR88</b>	<b>19 59 77 8</b>	
	11	50.80	<b>CCV 2,5/11-GFL-5,08P26THRR88</b>	<b>19 59 78 1</b>	
12	55.88	<b>CCV 2,5/12-GFL-5,08P26THRR88</b>	<b>19 59 79 4</b>		
<b>Taped header with threaded flange on one side</b> , plug-in direction vertical to the PCB, pin length 2.6 mm, 5.08 mm pitch, color: black	6	25.40	<b>CCV 2,5/6-GFR-5,08P26THRR56</b>	<b>19 59 87 5</b>	140
	7	30.48	<b>CCV 2,5/7-GFR-5,08P26THRR56</b>	<b>19 59 88 8</b>	
	8	35.56	<b>CCV 2,5/8-GFR-5,08P26THRR88</b>	<b>19 59 89 1</b>	
	9	40.64	<b>CCV 2,5/9-GFR-5,08P26THRR88</b>	<b>19 59 90 1</b>	
	10	45.72	<b>CCV 2,5/10-GFR-5,08P26THRR88</b>	<b>19 59 91 4</b>	
	11	50.80	<b>CCV 2,5/11-GFR-5,08P26THRR88</b>	<b>19 59 92 7</b>	
12	55.88	<b>CCV 2,5/12-GFR-5,08P26THRR88</b>	<b>19 59 93 0</b>		
(1) <b>Coding element</b> , inserted into the recess on the header after the reflow assembly process, red insulation material			<b>CR-MSTB</b>	<b>17 34 40 1</b>	100
(2) <b>HT coding element</b> <sup>1)</sup> , inserted into the recess on the header before the reflow process, made of high temperature resistant beige plastic			<b>CR-MSTB NAT HT</b>	<b>19 54 36 2</b>	100
(3) <b>Marker card</b> , with 12 pcs. 10-section marker strips, white, self-adhesive, for 120 terminal blocks			<b>SK 5,08/3,8</b> (see COMBICON catalog)		

## Technical data

Dimensions		
Pitch	[mm]	5.08
Hole diameter	[mm]	1.5
Pin dimensions	[mm]x[mm]	1x1

## Technical data in accordance with IEC/ DIN VDE

Insulating material group	–	IIIa	III / 2	II / 2
Surge voltage category / contamination class	–/–	III / 3	320	400
Rated voltage	[V]	250	4	4
Rated surge voltage	[kV]	4	12 / –	12 / –
Nominal current / cross section	[A]/[mm <sup>2</sup> ]			
Maximum load current / cross section	[A]/[mm <sup>2</sup> ]			

## Insulating material

Inflammability class in acc. with UL 94

see description

5.08

1.5

1x1

IIIa

III / 2

320

4

4

12 / –

12 / –

LCP

V0

Dimensional drawings, see page 7.

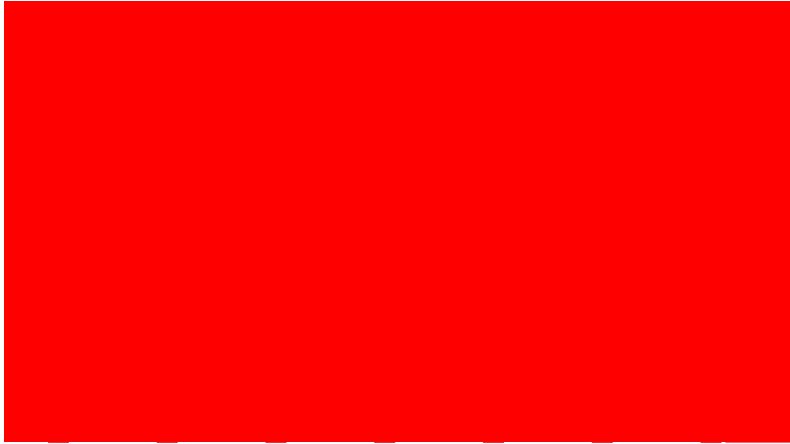
Dimensional drawings of tapes, see page 16.

<sup>1)</sup> Pre-coded taped articles are available on request.



**TWO IN ONE COMBICON**  
**Headers, taped, pitch 5.08 mm,**  
**vertical designs**

Feeder direction, tape width 56 mm (R56), even and odd nos. of positions



Feeder direction, tape width 88 mm (R88), even and odd nos. of positions

