



Chipsmall Limited consists of a professional team with an average of over 10 year of expertise in the distribution of electronic components. Based in Hongkong, we have already established firm and mutual-benefit business relationships with customers from,Europe,America and south Asia,supplying obsolete and hard-to-find components to meet their specific needs.

With the principle of “Quality Parts,Customers Priority,Honest Operation,and Considerate Service”,our business mainly focus on the distribution of electronic components. Line cards we deal with include Microchip,ALPS,ROHM,Xilinx,Pulse,ON,Everlight and Freescale. Main products comprise IC,Modules,Potentiometer,IC Socket,Relay,Connector.Our parts cover such applications as commercial,industrial, and automotives areas.

We are looking forward to setting up business relationship with you and hope to provide you with the best service and solution. Let us make a better world for our industry!



Contact us

Tel: +86-755-8981 8866 Fax: +86-755-8427 6832

Email & Skype: info@chipsmall.com Web: www.chipsmall.com

Address: A1208, Overseas Decoration Building, #122 Zhenhua RD., Futian, Shenzhen, China



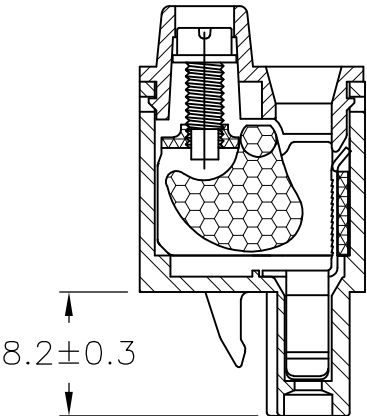
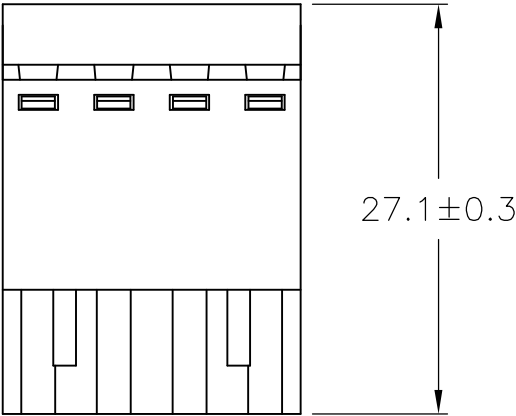
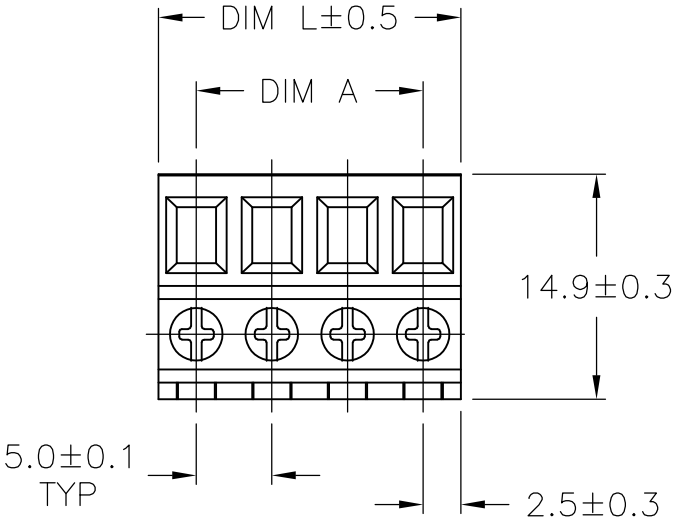
LOC	DIST	REVISIONS				
P	LTR	DESCRIPTION		DATE	DWN	APVD
		A2		REVISED PER ECO-11-004820	11MAR11	RK HMR

MATERIALS:
HOUSING: PA66, UL94V-0, COLOR: GREEN.
CONTACT: PHOS BRONZE, TIN PLATED.
WIRE GUARD: STEEL, ZINC CHROMATE.
CAGE CLAMP: STEEL, ZINC CHROMATE.
SCREW: STEEL, ZINC PLATED.


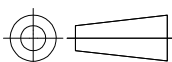
ELECTRICAL:
VOLTAGE RATING: 300V.
CURRENT RATING: 16A.
INSULATION RESISTANCE 2000Mohm/DC500V.
WITHSTANDING VOLTAGE AC2000V MIN
WIRE RANGE: 14-24 AWG

MECHANICAL:
SCREW TORQUE: 4.5 IN-LB
WIRE STRIP LENGTH: 10mm

ENVIRONMENTAL:
WORKING TEMP.: -40°C TO +105°C.



60.0	55.00	12	1-1986300-2
55.0	50.00	11	1-1986300-1
50.0	45.00	10	1-1986300-0
45.0	40.00	9	1986300-9
40.0	35.00	8	1986300-8
35.0	30.00	7	1986300-7
30.0	25.00	6	1986300-6
25.0	20.00	5	1986300-5
20.0	15.00	4	1986300-4
15.0	10.00	3	1986300-3
10.0	5.00	2	1986300-2
DIM L	DIM A	NO OF POS	PART NUMBER

THIS DRAWING IS A CONTROLLED DOCUMENT.		DWN S SCHLEGEL	27NOV2007	 TE Connectivity			
DIMENSIONS: mm		CHK C RICHARD	11/28/07				
	TOLERANCES UNLESS OTHERWISE SPECIFIED: 0 PLC ± - 1 PLC ± 0.2 2 PLC ± 0.10 3 PLC ± - 4 PLC ± - ANGLES ± 1°	APVD C RICHARD	11/28/07	NAME TERMINAL BLOCK, PLUG, 5.0mm PITCH			
		PRODUCT SPEC —					
		APPLICATION SPEC —					
		WEIGHT —					
MATERIAL —	FINISH —	CUSTOMER DRAWING		SIZE A3	CAGE CODE 00779	DRAWING NO C-1986300	RESTRICTED TO —
				SCALE NTS	SHEET 1 OF 1	REV A2	