



Chipsmall Limited consists of a professional team with an average of over 10 year of expertise in the distribution of electronic components. Based in Hongkong, we have already established firm and mutual-benefit business relationships with customers from,Europe,America and south Asia,supplying obsolete and hard-to-find components to meet their specific needs.

With the principle of “Quality Parts,Customers Priority,Honest Operation,and Considerate Service”,our business mainly focus on the distribution of electronic components. Line cards we deal with include Microchip,ALPS,ROHM,Xilinx,Pulse,ON,Everlight and Freescale. Main products comprise IC,Modules,Potentiometer,IC Socket,Relay,Connector.Our parts cover such applications as commercial,industrial, and automotives areas.

We are looking forward to setting up business relationship with you and hope to provide you with the best service and solution. Let us make a better world for our industry!



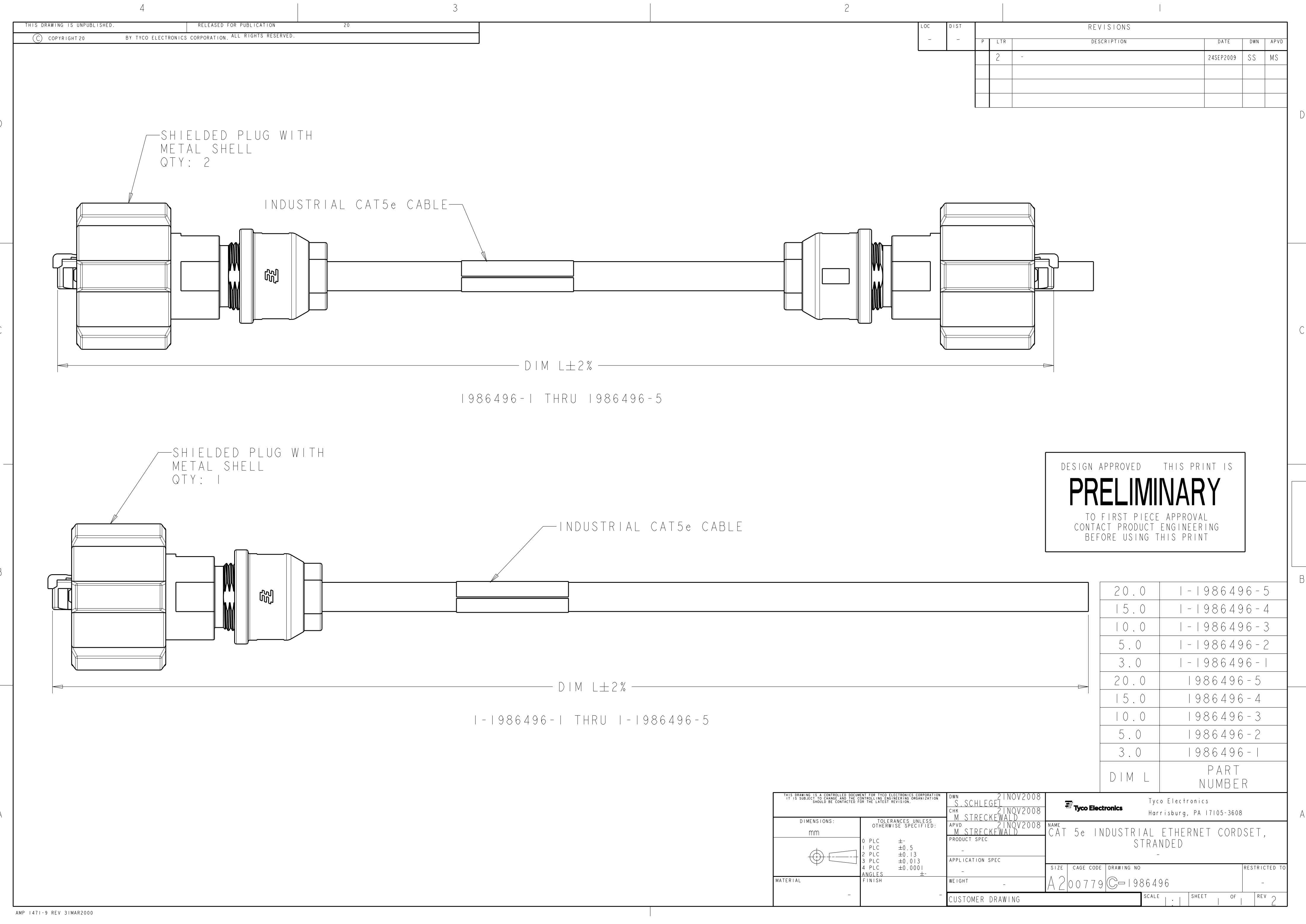
## Contact us

Tel: +86-755-8981 8866 Fax: +86-755-8427 6832

Email & Skype: [info@chipsmall.com](mailto:info@chipsmall.com) Web: [www.chipsmall.com](http://www.chipsmall.com)

Address: A1208, Overseas Decoration Building, #122 Zhenhua RD., Futian, Shenzhen, China





THIS DRAWING IS UNPUBLISHED.		RELEASED FOR PUBLICATION		20	
© COPYRIGHT 20		BY TYCO ELECTRONICS CORPORATION. ALL RIGHTS RESERVED.			

LOC	DIST	REVISIONS					
-	-	P	LTR	DESCRIPTION	DATE	DWN	APVD
		2	-		24SEP2009	SS	MS

SHIELDED PLUG WITH METAL SHELL  
QTY: 2

INDUSTRIAL CAT5e CABLE

DIM L±2%

1986496-1 THRU 1986496-5

SHIELDED PLUG WITH METAL SHELL  
QTY: 1

INDUSTRIAL CAT5e CABLE

DIM L±2%

1-1986496-1 THRU 1-1986496-5

DESIGN APPROVED    THIS PRINT IS

PRELIMINARY

TO FIRST PIECE APPROVAL  
CONTACT PRODUCT ENGINEERING  
BEFORE USING THIS PRINT

20.0	1-1986496-5
15.0	1-1986496-4
10.0	1-1986496-3
5.0	1-1986496-2
3.0	1-1986496-1
20.0	1986496-5
15.0	1986496-4
10.0	1986496-3
5.0	1986496-2
3.0	1986496-1
DIM L	PART NUMBER

THIS DRAWING IS A CONTROLLED DOCUMENT FOR TYCO ELECTRONICS CORPORATION. IT IS SUBJECT TO CHANGE AND THE CONTROLLING ENGINEERING ORGANIZATION SHOULD BE CONTACTED FOR THE LATEST REVISION.

DIMENSIONS:  
mm

MATERIAL  
-

TOLERANCES UNLESS OTHERWISE SPECIFIED:  
0 PLC ±  
1 PLC ±0.5  
2 PLC ±0.13  
3 PLC ±0.013  
4 PLC ±0.0001  
ANGLES ±  
FINISH

DWN  
S. SCHLEGEL 21NOV2008  
CHK  
M. STRECKEWALD 21NOV2008  
APVD  
M. STRECKEWALD 21NOV2008  
PRODUCT SPEC  
-  
APPLICATION SPEC  
-  
WEIGHT  
-  
CUSTOMER DRAWING

Tyco Electronics  
Harrisburg, PA 17105-3608

NAME  
CAT 5e INDUSTRIAL ETHERNET CORDSET, STRANDED  
-

SIZE  
A200779

CAGE CODE  
C-1986496

DRAWING NO  
-

RESTRICTED TO  
-

SCALE  
1:1

SHEET  
1

OF  
1

REV  
2

AMP 1471-9 REV 31MAR2000