



Chipsmall Limited consists of a professional team with an average of over 10 year of expertise in the distribution of electronic components. Based in Hongkong, we have already established firm and mutual-benefit business relationships with customers from,Europe,America and south Asia,supplying obsolete and hard-to-find components to meet their specific needs.

With the principle of “Quality Parts,Customers Priority,Honest Operation,and Considerate Service”,our business mainly focus on the distribution of electronic components. Line cards we deal with include Microchip,ALPS,ROHM,Xilinx,Pulse,ON,Everlight and Freescale. Main products comprise IC,Modules,Potentiometer,IC Socket,Relay,Connector.Our parts cover such applications as commercial,industrial, and automotives areas.

We are looking forward to setting up business relationship with you and hope to provide you with the best service and solution. Let us make a better world for our industry!



Contact us

Tel: +86-755-8981 8866 Fax: +86-755-8427 6832

Email & Skype: info@chipsmall.com Web: www.chipsmall.com

Address: A1208, Overseas Decoration Building, #122 Zhenhua RD., Futian, Shenzhen, China



4

3

2

1

THIS DRAWING IS UNPUBLISHED.

RELEASED FOR PUBLICATION

2011

© COPYRIGHT 2011

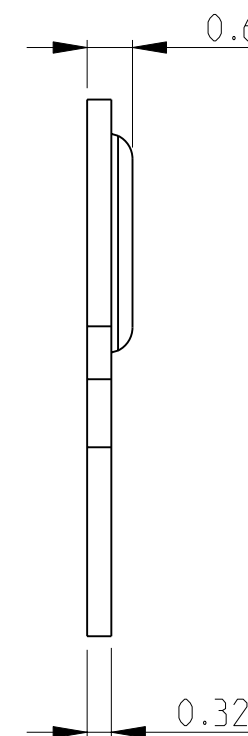
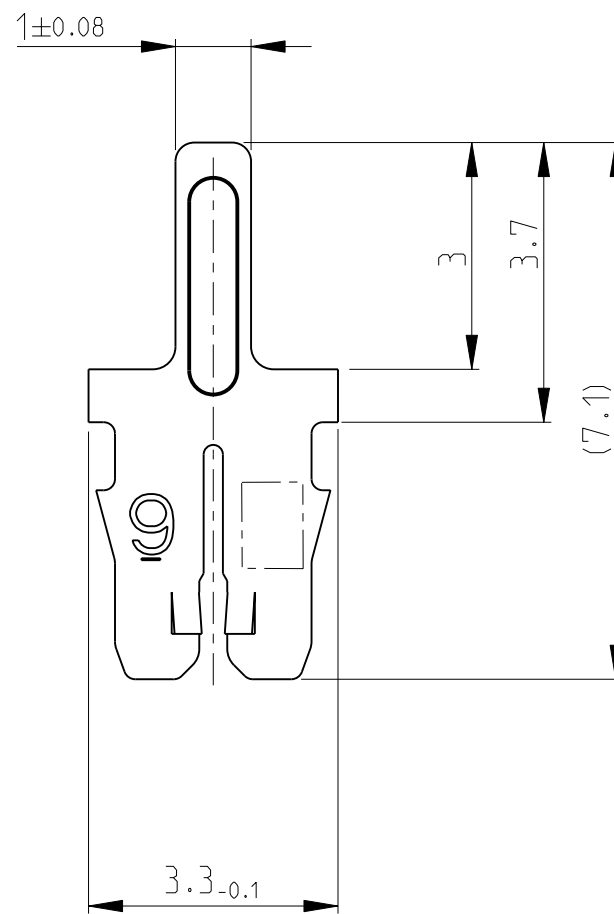
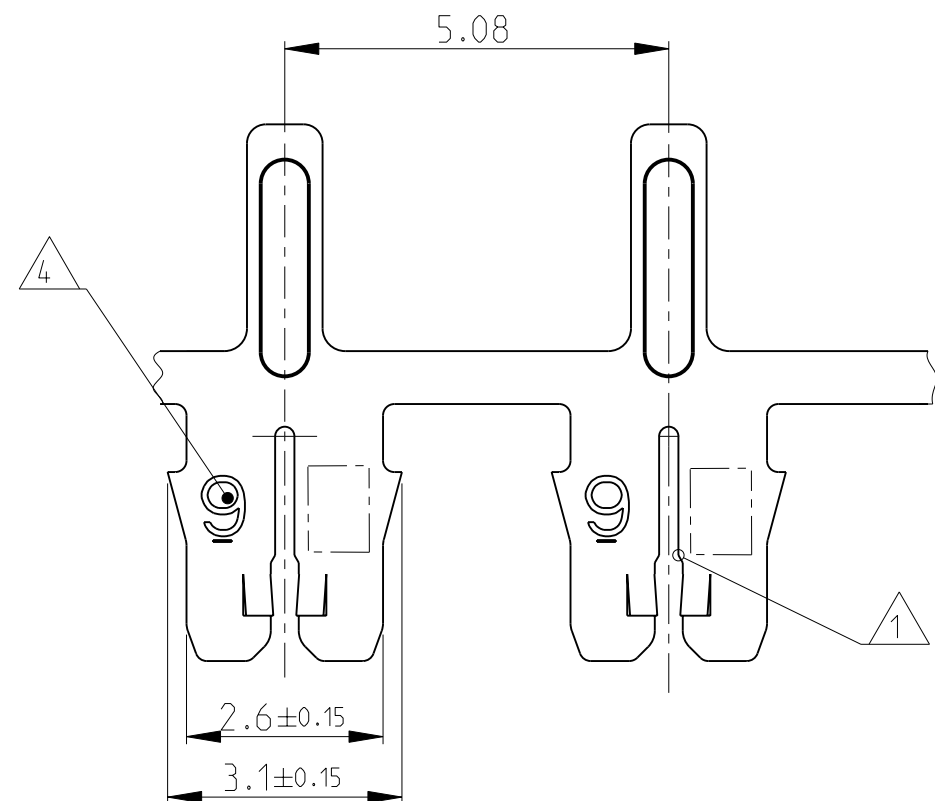
ALL RIGHTS RESERVED.

LOC
IR

DIST
-

REVISIONS


P	LTR	DESCRIPTION	DATE	DWN	APVD
	A	INITIAL RELEASE	18JUL2011	PKS	RRP
	A1	CAVITY DWG INFO CORRECTED	29SEP2011	PKS	RRP



Bemerkungen
NOTES

- 1 Geeignet fuer Kupferlackdraht $\varnothing 0.355...0.45\text{mm}$
Einzeldraht oder zwei Draehte gleichen Durchmessers
SLOT ACCEPTS:
SINGLE OR DOUBLE MAGNET WIRE
SAME DIAMETERS 0.355...0.45mm DIA
- 2 Anlieferungszustand: Kontakte fortlaufend mit
Papierzwiseilage auf Kunststoffspule aufgewickelt
Max. 5 Splice Stellen pro Spule
Splice Stellen nicht miteinander verbunden
DELIVERYSTATE: CONTACTS CONTINUOUS REELED WITH PAPER
INTERLAYER ON PLASTIC-REEL.
MAX. 5 SPLICES PER REEL
SPLICES BE NOT BONDED TOGETHER.
- 3 Kontaktkammer nach Zeichnung } Spec. 411-18513
CAVITY ACCORDING DWG.
- 4 Kennziffer fuer Drahtgroessenbereich (9)
IDENTIFICATION NO. FOR MAGNET WIRE RANGE (9)
- 5 Materialdicke } 0.32 ± 0.02
STOCK THICKNESS

1987501-1	A	CuSn	PRETINNED	MAG-MATE .187 mod.
PART NO	REV.	MATERIAL	SURFACE COLOR	DESCRIPTION

THIS DRAWING IS A CONTROLLED DOCUMENT.		DWN J.KOEHLE 31JUL2008	 TE Connectivity NAME MAG-MATE Kontakt mit Loetpin											
DIMENSIONS: mm		CHK S.ZABECK 04AUG2008												
TOLERANCES UNLESS OTHERWISE SPECIFIED:		APVD T.KLENNER 04AUG2008												
<table border="1"> <tr><td>0 PLC</td><td>± 0.2</td></tr> <tr><td>1 PLC</td><td>± 0.2</td></tr> <tr><td>2 PLC</td><td>± 0.2</td></tr> <tr><td>3 PLC</td><td>± 0.2</td></tr> <tr><td>4 PLC</td><td>± 0.2</td></tr> <tr><td>ANGLES</td><td>$\pm 1^\circ$</td></tr> </table>		0 PLC				± 0.2	1 PLC	± 0.2	2 PLC	± 0.2	3 PLC	± 0.2	4 PLC	± 0.2
0 PLC	± 0.2													
1 PLC	± 0.2													
2 PLC	± 0.2													
3 PLC	± 0.2													
4 PLC	± 0.2													
ANGLES	$\pm 1^\circ$													
MATERIAL SEE TABLE		FINISH SEE TABLE	APPLICATION SPEC	SIZE A3	CAGE CODE 00779									
		WEIGHT		DRAWING NO C-1987501	RESTRICTED TO									
CUSTOMER DRAWING			SCALE 10:1	SHEET 1 OF 1	REV A1									