



Chipsmall Limited consists of a professional team with an average of over 10 year of expertise in the distribution of electronic components. Based in Hongkong, we have already established firm and mutual-benefit business relationships with customers from,Europe,America and south Asia,supplying obsolete and hard-to-find components to meet their specific needs.

With the principle of “Quality Parts,Customers Priority,Honest Operation,and Considerate Service”,our business mainly focus on the distribution of electronic components. Line cards we deal with include Microchip,ALPS,ROHM,Xilinx,Pulse,ON,Everlight and Freescale. Main products comprise IC,Modules,Potentiometer,IC Socket,Relay,Connector.Our parts cover such applications as commercial,industrial, and automotives areas.

We are looking forward to setting up business relationship with you and hope to provide you with the best service and solution. Let us make a better world for our industry!



## Contact us

Tel: +86-755-8981 8866 Fax: +86-755-8427 6832

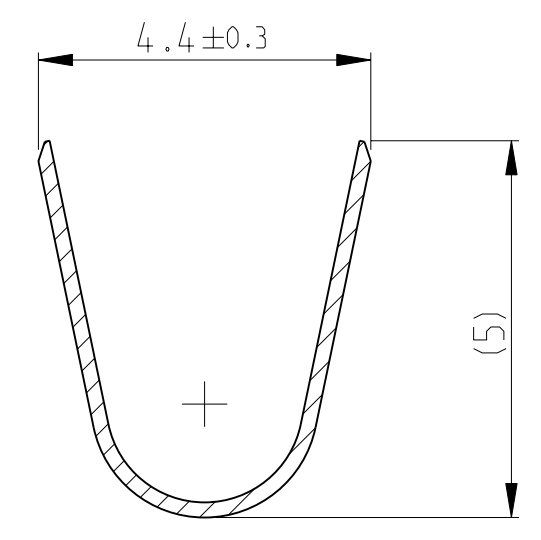
Email & Skype: info@chipsmall.com Web: www.chipsmall.com

Address: A1208, Overseas Decoration Building, #122 Zhenhua RD., Futian, Shenzhen, China

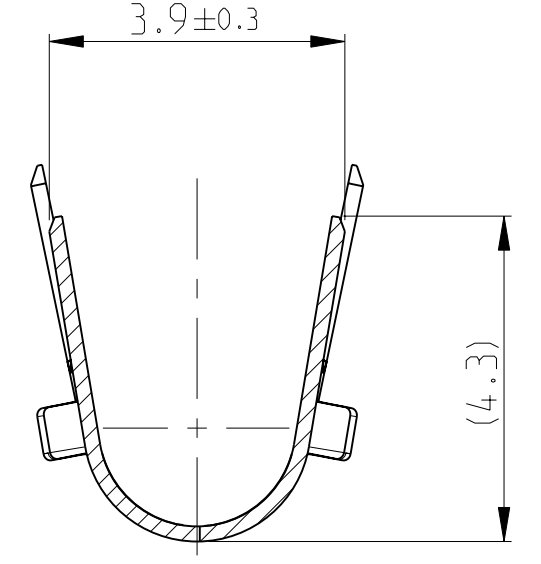


EGGMA09502

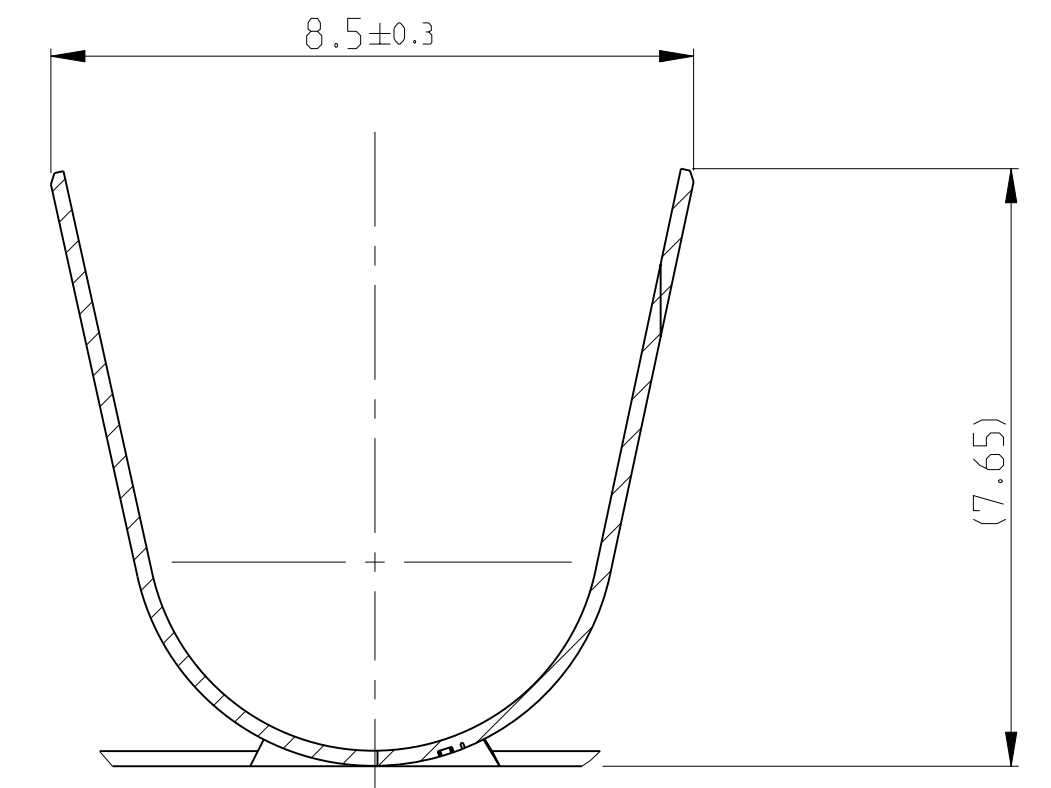
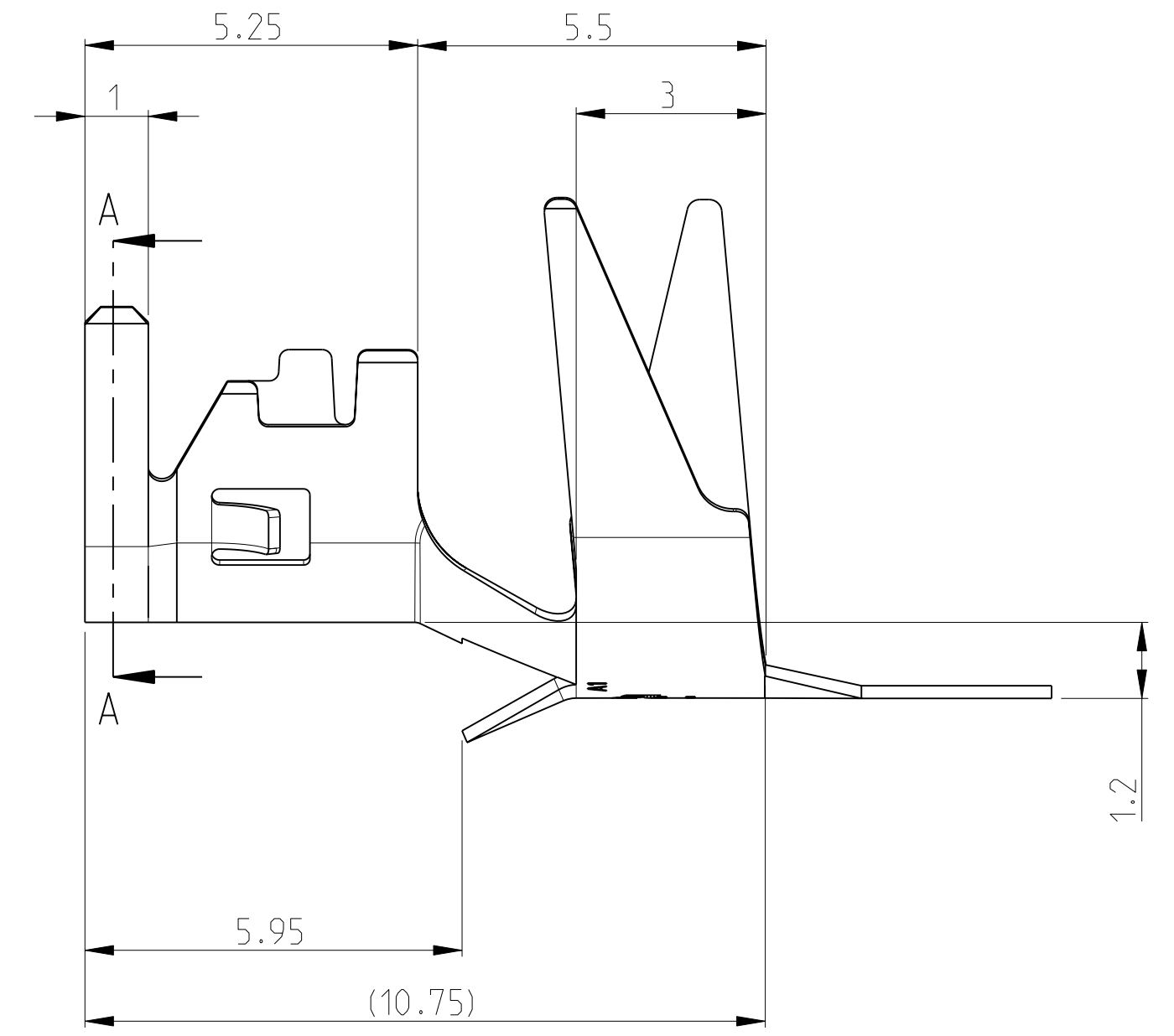
LOC	DIST	REVISIONS			
P	LTB	DESCRIPTION	DATE	DWN	APVD
A1	-	NEW DRAWING	27MAI2009	HA	WH
B1	-	STOP ADDED. CRIMPS EXTENDED (A-A, B-B)	22MAR2010	WH	BS
-	-	-	-	-	-



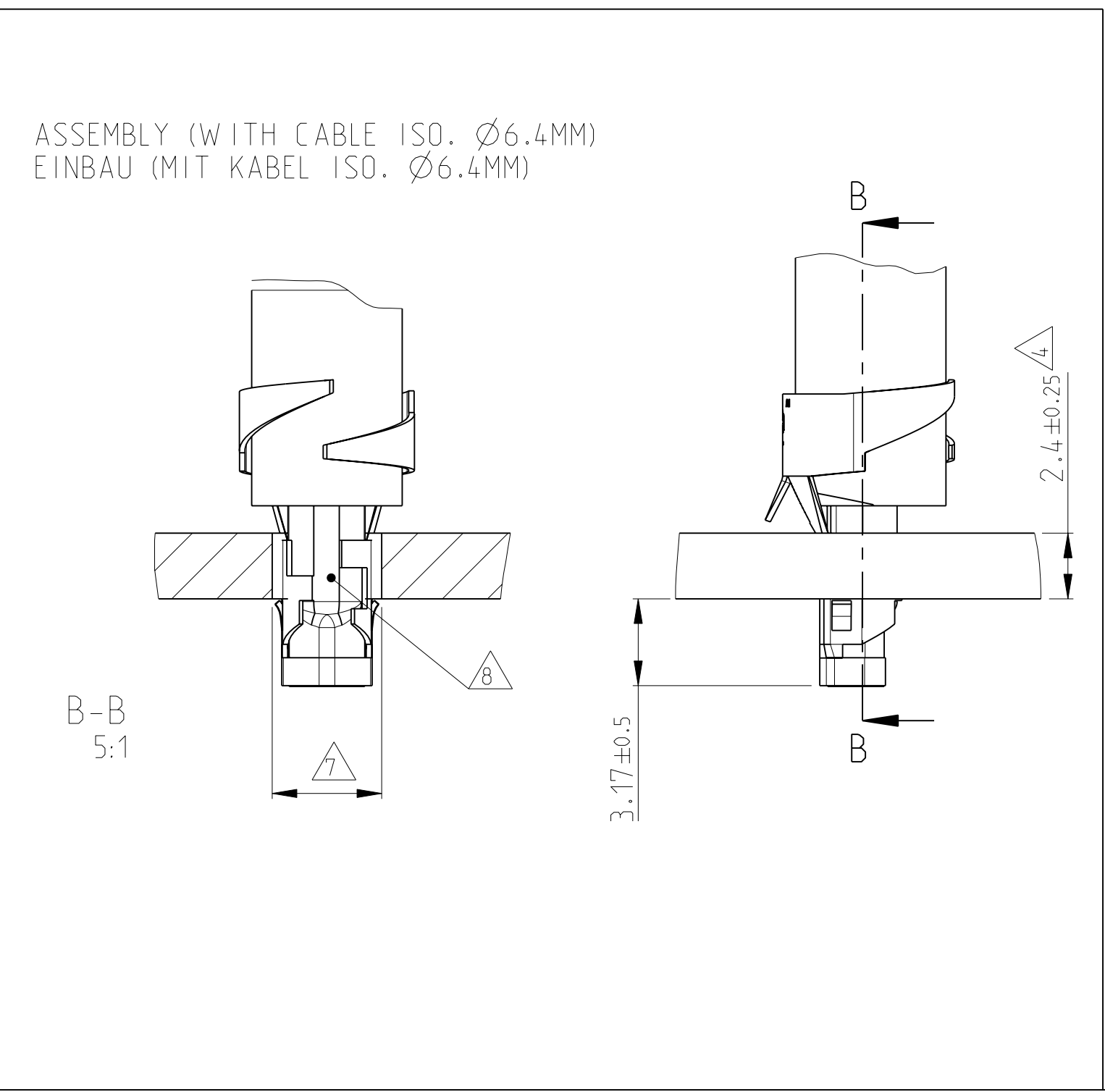
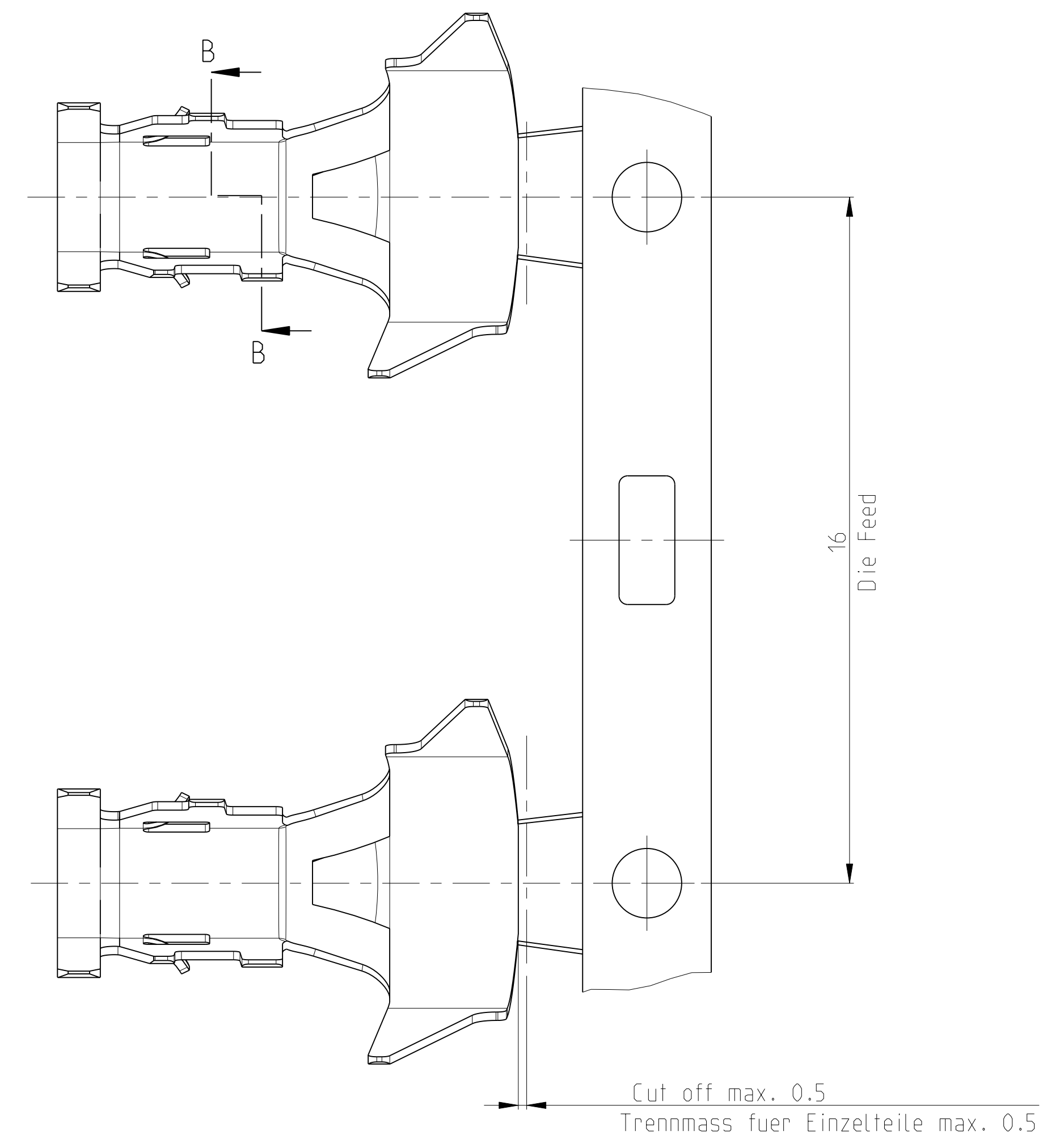
A-A



B-B



C-C



1 FOR WIRE SECTION 4 - 6 MM<sup>2</sup> AND ISOLATION Ø 4.35 - 6.4  
 fuer Leitungsquerschnitt 4 - 6 mm<sup>2</sup> und Isolations Ø 4.35 - 6.4 mm

2 MATERIAL CuSn, PRE-TIN PLATED  
 Material CuSn, vorverzinnt

3 DELIVERED STATE: STRIP ON CORRUGATED REEL  
 Anlieferungszustand: Bandware auf Wellenpappenspule

4 PCB THICKNESS ACCORDING DIN EN 60249-2-4 TABLE 3  
 Leiterplattendicke nach DIN EN 60249-2-4 Tabelle 3

5 SOLDER FILLING ACCORDING IPC-A-610.6.3.1  
 REQUIREMENTS 100%; ACCEPTABLE 80%  
 Loeffuellung nach IPC-A-610.6.3.1  
 Vorgabe 100%; Akzeptabel 80%

6 MAX. 1 SPLICE PER REEL  
 SPLICE BE NOT BONDED TOGETHER  
 Max. 1 Trennstelle pro Spule  
 Trennstellen sind nicht miteinander verbunden

7 DIAMETERS FOR PCB HOLE; SEE APPLICATION SPECIFICATION 114-94001  
 Lochdurchmesser fuer Leiterplatte; siehe Verarbeitungsspezifikation 114-94001

8 APPLICATOR PN....  
 Anschlagwerkzeug PN.....

<small>THIS DRAWING IS UNPUBLISHED. RELEASED FOR PUBLICATION 2009. COPYRIGHT 2009 BY TYCO ELECTRONICS CORPORATION, ALL RIGHTS RESERVED.</small>		DWN: H.ATZMANN 27MAI2009 CHK: W.HOFFMANN 27MAI2009	Tyco Electronics AMP GmbH 64625 Bensheim (Germany)
DIMENSIONS: mm TOLERANCES UNLESS OTHERWISE SPECIFIED: 0 PLC ±0.2 1 PLC ±0.2 2 PLC ±0.2 3 PLC ±0.2 4 PLC ±0.2 ANGLES ±1° FINISH:		NAME: TERMINAL, AMP - IN PRODUCT SPEC: - APPLICATION SPEC: -	SIZE: A1 CAGE CODE: 00779 DRAWING NO: C=1987984 RESTRICTED TO: -
MATERIAL: - FINISH: -		WEIGHT: - CUSTOMER DRAWING:	SCALE: 10:1 SHEET: 1 OF 1 REV: B1