



Chipsmall Limited consists of a professional team with an average of over 10 year of expertise in the distribution of electronic components. Based in Hongkong, we have already established firm and mutual-benefit business relationships with customers from,Europe,America and south Asia,supplying obsolete and hard-to-find components to meet their specific needs.

With the principle of “Quality Parts,Customers Priority,Honest Operation,and Considerate Service”,our business mainly focus on the distribution of electronic components. Line cards we deal with include Microchip,ALPS,ROHM,Xilinx,Pulse,ON,Everlight and Freescale. Main products comprise IC,Modules,Potentiometer,IC Socket,Relay,Connector.Our parts cover such applications as commercial,industrial, and automotives areas.

We are looking forward to setting up business relationship with you and hope to provide you with the best service and solution. Let us make a better world for our industry!



## Contact us

Tel: +86-755-8981 8866 Fax: +86-755-8427 6832

Email & Skype: info@chipsmall.com Web: www.chipsmall.com

Address: A1208, Overseas Decoration Building, #122 Zhenhua RD., Futian, Shenzhen, China



## PCB terminal block - PTA 1,5/16-5,0 - 1988943

Please be informed that the data shown in this PDF Document is generated from our Online Catalog. Please find the complete data in the user's documentation. Our General Terms of Use for Downloads are valid (<http://phoenixcontact.com/download>)

PCB terminal block, Nominal current: 17.5 A, Nom. voltage: 400 V, Pitch: 5 mm, Number of positions: 16, Connection method: Screw connection, Mounting: Soldering, Conductor/PCB connection direction: 45 °, Color: green



The figure shows a 10-position version of the product

### Product Features

- Large terminal block capacity thanks to rectangular clamping space
- Rugged version with high current carrying capacity
- Highly flexible conductor protection for easy, repeated connection
- Plus/minus screw



### Key Commercial Data

|                                      |          |
|--------------------------------------|----------|
| Packing unit                         | 1 pc     |
| Minimum order quantity               | 50 pc    |
| Weight per Piece (excluding packing) | 16.91 g  |
| Custom tariff number                 | 85369010 |
| Country of origin                    | Bulgaria |

### Technical data

#### Dimensions

|                |        |
|----------------|--------|
| Pitch          | 5 mm   |
| Dimension a    | 75 mm  |
| Pin dimensions | 1,0 mm |
| Pin spacing    | 5 mm   |
| Hole diameter  | 1.3 mm |

#### General

|                           |         |
|---------------------------|---------|
| Range of articles         | PTA 1,5 |
| Insulating material group | I       |

## PCB terminal block - PTA 1,5/16-5,0 - 1988943

### Technical data

#### General

|   |                     |
|---|---------------------|
| Rated surge voltage (III/3)             | 4 kV                |
| Rated surge voltage (III/2)             | 4 kV                |
| Rated surge voltage (II/2)              | 4 kV                |
| Rated voltage (III/3)                   | 250 V               |
| Rated voltage (III/2)                   | 400 V               |
| Rated voltage (II/2)                    | 630 V               |
| Connection in acc. with standard        | EN-VDE              |
| Nominal current $I_N$                   | 17.5 A              |
| Nominal cross section                   | 1.5 mm <sup>2</sup> |
| Maximum load current                    | 24 A                |
| Insulating material                     | PA                  |
| Solder pin surface                      | Sn                  |
| Inflammability class according to UL 94 | V0                  |
| Internal cylindrical gage               | A1 / B1             |
| Stripping length                        | 5 mm                |
| Number of positions                     | 16                  |
| Screw thread                            | M2,6                |
| Tightening torque, min                  | 0.35 Nm             |
| Tightening torque max                   | 0.4 Nm              |

#### Connection data

|   |                      |
|---|----------------------|
| Conductor cross section solid min.  | 0.14 mm <sup>2</sup> |
| Conductor cross section solid max.  | 2.5 mm <sup>2</sup>  |
| Conductor cross section flexible min.   | 0.14 mm <sup>2</sup> |
| Conductor cross section flexible max.   | 2.5 mm <sup>2</sup>  |
| Conductor cross section flexible, with ferrule without plastic sleeve min.            | 0.25 mm <sup>2</sup> |
| Conductor cross section flexible, with ferrule without plastic sleeve max.            | 1.5 mm <sup>2</sup>  |
| Conductor cross section flexible, with ferrule with plastic sleeve min.               | 0.25 mm <sup>2</sup> |
| Conductor cross section flexible, with ferrule with plastic sleeve max.               | 1.5 mm <sup>2</sup>  |
| Conductor cross section AWG min.  | 26                   |
| Conductor cross section AWG max.  | 14                   |
| 2 conductors with same cross section, solid min.                                      | 0.14 mm <sup>2</sup> |
| 2 conductors with same cross section, solid max.                                      | 1 mm <sup>2</sup>    |
| 2 conductors with same cross section, stranded min.                                   | 0.14 mm <sup>2</sup> |
| 2 conductors with same cross section, stranded max.                                   | 0.75 mm <sup>2</sup> |
| 2 conductors with same cross section, stranded, ferrules without plastic sleeve, min. | 0.25 mm <sup>2</sup> |

## PCB terminal block - PTA 1,5/16-5,0 - 1988943

### Technical data

#### Connection data

|   |                      |
|---|----------------------|
| 2 conductors with same cross section, stranded, ferrules without plastic sleeve, max.   | 0.34 mm <sup>2</sup> |
| 2 conductors with same cross section, stranded, TWIN ferrules with plastic sleeve, min. | 0.25 mm <sup>2</sup> |
| 2 conductors with same cross section, stranded, TWIN ferrules with plastic sleeve, max. | 0.75 mm <sup>2</sup> |

### Classifications

#### eCl@ss

|            |          |
|------------|----------|
| eCl@ss 4.0 | 272607xx |
| eCl@ss 4.1 | 27141109 |
| eCl@ss 5.0 | 27141190 |
| eCl@ss 5.1 | 27141190 |
| eCl@ss 6.0 | 27261101 |
| eCl@ss 7.0 | 27440401 |
| eCl@ss 8.0 | 27440401 |

#### ETIM

|          |          |
|----------|----------|
| ETIM 3.0 | EC001121 |
| ETIM 4.0 | EC002643 |
| ETIM 5.0 | EC002643 |

#### UNSPSC

|               |          |
|---------------|----------|
| UNSPSC 6.01   | 30211801 |
| UNSPSC 7.0901 | 39121432 |
| UNSPSC 11     | 34131203 |
| UNSPSC 12.01  | 39121432 |
| UNSPSC 13.2   | 39121432 |

### Approvals

#### Approvals

---

#### Approvals

UL Recognized / cUL Recognized / VDE Gutachten mit Fertigungsüberwachung / CCA / IECCE CB Scheme / EAC / cULus Recognized

---


#### Ex Approvals


# PCB terminal block - PTA 1,5/16-5,0 - 1988943


## Approvals

Approvals submitted

### Approval details

|   |       |       |
|---|-------|-------|
| UL Recognized  |       |       |
|   | B     | D     |
| mm <sup>2</sup> /AWG/kcmil  | 26-12 | 26-12 |
| Nominal current I <sub>N</sub>  | 15 A  | 10 A  |
| Nominal voltage U <sub>N</sub>  | 300 V | 300 V |

|   |       |       |
|---|-------|-------|
| cUL Recognized  |       |       |
|   | B     | D     |
| mm <sup>2</sup> /AWG/kcmil  | 26-12 | 26-12 |
| Nominal current I <sub>N</sub>  | 15 A  | 10 A  |
| Nominal voltage U <sub>N</sub>  | 300 V | 300 V |

|   |         |
|---|---------|
| VDE Gutachten mit Fertigungsüberwachung  |         |
|   |         |
| mm <sup>2</sup> /AWG/kcmil  | 0.2-2.5 |
| Nominal current I <sub>N</sub>  | 24 A    |
| Nominal voltage U <sub>N</sub>  | 250 V   |

|                                |         |
|--------------------------------|---------|
| CCA                            |         |
|                                |         |
| mm <sup>2</sup> /AWG/kcmil     | 0.2-2.5 |
| Nominal current I <sub>N</sub> | 24 A    |
| Nominal voltage U <sub>N</sub> | 250 V   |

# PCB terminal block - PTA 1,5/16-5,0 - 1988943

## Approvals

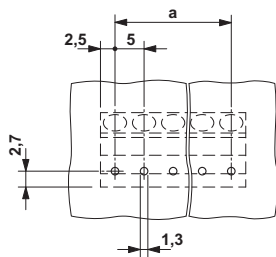
|                                |         |
|--------------------------------|---------|
| IECEE CB Scheme                |         |
| mm <sup>2</sup> /AWG/kcmil     | 0.2-2.5 |
| Nominal current I <sub>N</sub> | 24 A    |
| Nominal voltage U <sub>N</sub> | 250 V   |

|     |
|-----|
| EAC |
|-----|

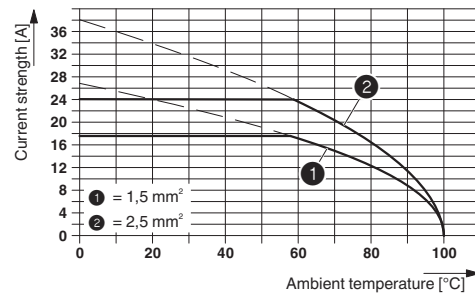
|                  |
|------------------|
| cULus Recognized |
|------------------|

## Drawings

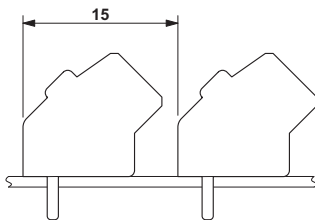
Drilling diagram



Diagram



Dimensional drawing



Dimensional drawing

