



Chipsmall Limited consists of a professional team with an average of over 10 year of expertise in the distribution of electronic components. Based in Hongkong, we have already established firm and mutual-benefit business relationships with customers from,Europe,America and south Asia,supplying obsolete and hard-to-find components to meet their specific needs.

With the principle of “Quality Parts,Customers Priority,Honest Operation,and Considerate Service”,our business mainly focus on the distribution of electronic components. Line cards we deal with include Microchip,ALPS,ROHM,Xilinx,Pulse,ON,Everlight and Freescale. Main products comprise IC,Modules,Potentiometer,IC Socket,Relay,Connector.Our parts cover such applications as commercial,industrial, and automotives areas.

We are looking forward to setting up business relationship with you and hope to provide you with the best service and solution. Let us make a better world for our industry!



## Contact us

Tel: +86-755-8981 8866 Fax: +86-755-8427 6832

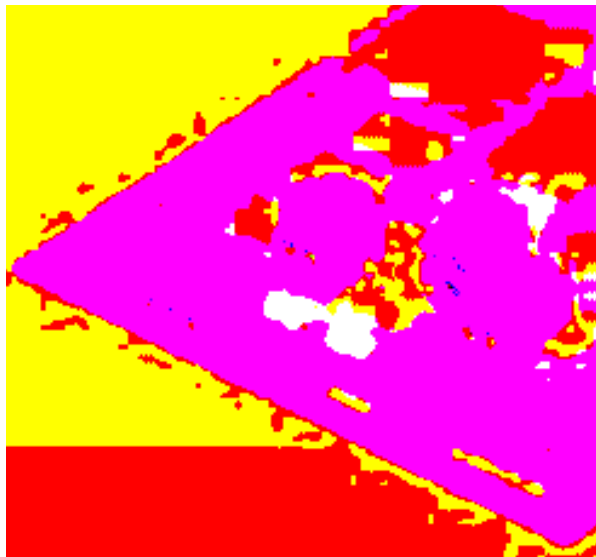
Email & Skype: info@chipsmall.com Web: www.chipsmall.com

Address: A1208, Overseas Decoration Building, #122 Zhenhua RD., Futian, Shenzhen, China



## COMBICON compact Screw Compact Terminal Blocks PT(A) 1,5/... with a 3.5 mm Pitch

---



### COMBICON Select

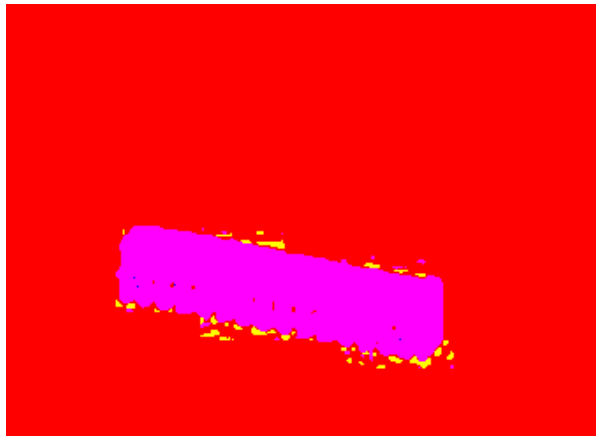
The COMBICON search engine with CAD downloading



COMBICON Select – the printed circuit board connection software supports your workflow from the PCB and housing layout to the ordering process with:

- Systematic and fast selection of products
- Universal Internet aided engineering with extensive CAD downloading
- Easy-to-use e-shopping functions.

<http://select.phoenixcontact.com>



Description	No. of pos.	Dim. a [mm]	Type	Order No.	Pcs./Pkt.
<b>Printed circuit screw termination blocks with housing interlocking, 3.5 mm pitch, color: green</b>	2	3.5	PT 1,5/2-3,5-H	19 84 61 7	250
	3	7	PT 1,5/3-3,5-H	19 84 62 0	250
	4	10.5	PT 1,5/4-3,5-H	19 84 63 3	250
	5	14	PT 1,5/5-3,5-H	19 84 64 6	100
	6	17.5	PT 1,5/6-3,5-H	19 84 65 9	100
	7	21	PT 1,5/7-3,5-H	19 84 66 2	100
	8	24.5	PT 1,5/8-3,5-H	19 84 67 5	100
	9	28	PT 1,5/9-3,5-H	19 84 68 8	100
	10	31.5	PT 1,5/10-3,5-H	19 84 69 1	100
	11	35	PT 1,5/11-3,5-H	19 84 70 1	50
	12	38.5	PT 1,5/12-3,5-H	19 84 71 4	50
	13	42	PT 1,5/13-3,5-H	19 84 72 7	50
	14	45.5	PT 1,5/14-3,5-H	19 84 73 0	50
	15	49	PT 1,5/15-3,5-H	19 84 74 3	50
	16	52.5	PT 1,5/16-3,5-H	19 84 75 6	50

**(1) Screwdriver**



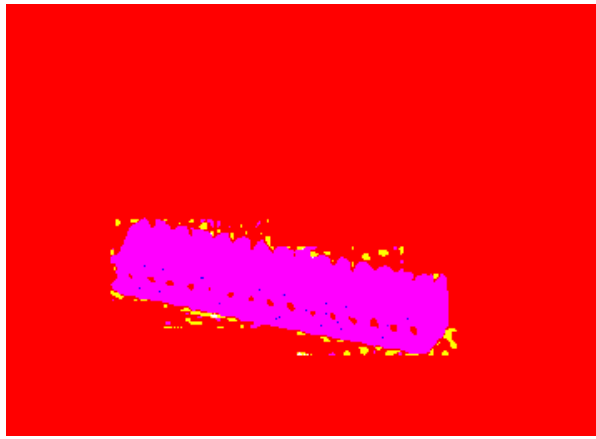
<b>SZS 0,4 x 2,5</b>	<b>12 05 03 7</b>	<b>10</b>
----------------------	-------------------	-----------

**Technical data**

<b>Dimensions</b>		see description		
Pitch	[mm]	3.5		
Hole diameter	[mm]	1.2		
Pin dimensions	[mm]x[mm]	∅ 0.9		
<b>Technical data in accordance with IEC/ DIN VDE</b>				
Insulating material group	-	I		
Surge voltage category / contamination class	-/-	III / 3	III / 2	II / 2
Rated voltage	[V]	160	200	400
Rated surge voltage	[kV]	2.5	2.5	2.5
Nominal current / cross section	[A]/[mm²]	17.5 / 1.5		
Maximum load current / cross section	[A]/[mm²]	17.5 / 1.5		
<b>Connection capacity</b>				
Solid / stranded / conductor sizes	[mm²]/[mm²]/AWG	0.2 - 1.5 / 0.2 - 1.5 / 26 - 16		
Stranded with ferrule without / with plastic sleeve	[mm²]	- / 0.75 <sup>1)</sup>		
<b>Multiple connection (2 conductors with same cross section)</b>				
Solid / stranded	[mm²]	0.2 - 0.34 / 0.2 - 0.5		
Stranded with ferrule without plastic sleeve	[mm²]	-		
Stranded with TWIN ferrule with plastic sleeve	[mm²]	-		
<b>Stripping length</b>	[mm]	5		
<b>Internal cylindrical gauge (IEC 60 947-1)</b>	-	-		
<b>Thread</b>	-	M 2		
<b>Torque</b>	[Nm]	0.25		
<b>Insulating material</b>		PA		
Inflammability class in acc. with UL 94		V0		
<b>Approval data (UL/CUL and CSA)</b>				
Nominal voltage / current / conductor sizes	UL/CUL: [V]/[A]/AWG CSA: [V]/[A]/AWG	300 / 10 / 26 - 16		

<sup>1)</sup> When using ferrules with a plastic sleeve, 125 V max. can be achieved in connection with surge voltage category / contamination class II/2.





Description	No. of pos.	Dim. a [mm]	Type	Order No.	Pcs./Pkt.
<b>Printed circuit screw termination blocks with housing interlocking, 3.5 mm pitch, color: green</b>	2	3.5	PT 1,5/2-3,5-V	19 84 76 9	250
	3	7	PT 1,5/3-3,5-V	19 84 77 2	250
	4	10.5	PT 1,5/4-3,5-V	19 84 78 5	250
	5	14	PT 1,5/5-3,5-V	19 84 79 8	100
	6	17.5	PT 1,5/6-3,5-V	19 84 80 8	100
	7	21	PT 1,5/7-3,5-V	19 84 81 1	100
	8	24.5	PT 1,5/8-3,5-V	19 84 82 4	100
	9	28	PT 1,5/9-3,5-V	19 84 83 7	100
	10	31.5	PT 1,5/10-3,5-V	19 84 84 0	100
	11	35	PT 1,5/11-3,5-V	19 84 85 3	50
	12	38.5	PT 1,5/12-3,5-V	19 84 86 6	50
	13	42	PT 1,5/13-3,5-V	19 84 87 9	50
	14	45.5	PT 1,5/14-3,5-V	19 84 88 2	50
	15	49	PT 1,5/15-3,5-V	19 84 89 5	50
	16	52.5	PT 1,5/16-3,5-V	19 84 90 5	50

**(1) Screwdriver**



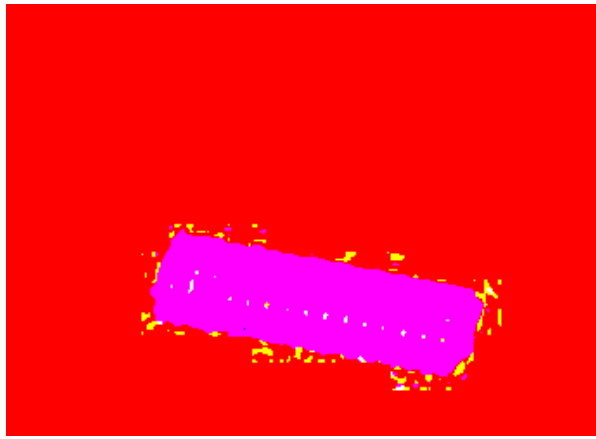
<b>SZS 0,4 x 2,5</b>	<b>12 05 03 7</b>	<b>10</b>
----------------------	-------------------	-----------

**Technical data**

<b>Dimensions</b>		see description		
Pitch	[mm]	3.5		
Hole diameter	[mm]	1.2		
Pin dimensions	[mm]x[mm]	∅ 0.9		
<b>Technical data in accordance with IEC/ DIN VDE</b>				
Insulating material group	-	I		
Surge voltage category / contamination class	-/-	III / 3	III / 2	II / 2
Rated voltage	[V]	160	200	400
Rated surge voltage	[kV]	2.5	2.5	2.5
Nominal current / cross section	[A]/[mm²]	17.5 / 1.5		
Maximum load current / cross section	[A]/[mm²]	17.5 / 1.5		
<b>Connection capacity</b>				
Solid / stranded / conductor sizes	[mm²]/[mm²]/AWG	0.2 - 1.5 / 0.2 - 1.5 / 26 - 16		
Stranded with ferrule without / with plastic sleeve	[mm²]	- / (0.75 <sup>1)</sup> )		
<b>Multiple connection (2 conductors with same cross section)</b>				
Solid / stranded	[mm²]	0.2 - 0.34 / 0.2 - 0.5		
Stranded with ferrule without plastic sleeve	[mm²]	-		
Stranded with TWIN ferrule with plastic sleeve	[mm²]	-		
<b>Stripping length</b>	[mm]	5		
<b>Internal cylindrical gauge (IEC 60 947-1)</b>	-	-		
<b>Thread</b>	-	M 2		
<b>Torque</b>	[Nm]	0.25		
<b>Insulating material</b>		PA		
Inflammability class in acc. with UL 94		V0		
<b>Approval data (UL/CUL and CSA)</b>				
Nominal voltage / current / conductor sizes	UL/CUL: [V]/[A]/AWG CSA: [V]/[A]/AWG	300 / 10 / 26 - 16		

<sup>1)</sup> When using ferrules with a plastic sleeve, 125 V max. can be achieved in connection with surge voltage category / contamination class II/2.



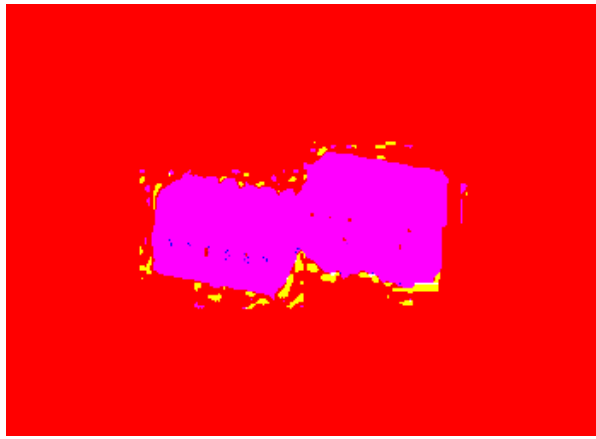


Description	No. of pos.	Dim. a [mm]	Type	Order No.	Pcs./Pkt.
<b>Printed circuit screw termination blocks with housing interlocking, 3.5 mm pitch, color: green</b>	2	3.5	PTA 1,5/2-3,5	19 88 95 6	250
	3	7	PTA 1,5/3-3,5	19 88 96 9	250
	4	10.5	PTA 1,5/4-3,5	19 88 97 2	250
	5	14	PTA 1,5/5-3,5	19 88 98 5	100
	6	17.5	PTA 1,5/6-3,5	19 88 99 8	100
	7	21	PTA 1,5/7-3,5	19 89 00 7	100
	8	24.5	PTA 1,5/8-3,5	19 89 01 0	100
	9	28	PTA 1,5/9-3,5	19 89 02 3	100
	10	31.5	PTA 1,5/10-3,5	19 89 03 6	100
	11	35	PTA 1,5/11-3,5	19 89 04 9	50
	12	38.5	PTA 1,5/12-3,5	19 89 05 2	50
	13	42	PTA 1,5/13-3,5	19 89 06 5	50
	14	45.5	PTA 1,5/14-3,5	19 89 07 8	50
	15	49	PTA 1,5/15-3,5	19 89 08 1	50
	16	52.5	PTA 1,5/16-3,5	19 89 09 4	50
	<b>(1) Screwdriver</b>			<b>SZS 0,4 x 2,5</b>	<b>12 05 03 7</b>
<b>Technical data</b>			see description		
Dimensions			3.5		
Pitch		[mm]	1.2		
Hole diameter		[mm]	∅ 0.9		
Pin dimensions		[mm]x[mm]			
<b>Technical data in accordance with IEC/ DIN VDE</b>					
Insulating material group		—	I		
Surge voltage category / contamination class		—/—	III / 3	III / 2	II / 2
Rated voltage		[V]	160	200	400
Rated surge voltage		[kV]	2.5	2.5	2.5
Nominal current / cross section		[A]/[mm²]	17.5 / 1.5		
Maximum load current / cross section		[A]/[mm²]	17.5 / 1.5		
<b>Connection capacity</b>			0.2 - 1.5 / 0.2 - 1.5 / 26 - 16		
Solid / stranded / conductor sizes		[mm²]/[mm²]/AWG	— / (0.75 <sup>1)</sup> )		
Stranded with ferrule without / with plastic sleeve		[mm²]			
<b>Multiple connection (2 conductors with same cross section)</b>			0.2 - 0.34 / 0.2 - 0.5		
Solid / stranded		[mm²]	—		
Stranded with ferrule without plastic sleeve		[mm²]	—		
Stranded with TWIN ferrule with plastic sleeve		[mm²]	—		
Stripping length		[mm]	5		
Internal cylindrical gauge (IEC 60 947-1)		—	—		
Thread		—	M 2		
Torque		[Nm]	0.25		
<b>Insulating material</b>			PA		
Inflammability class in acc. with UL 94		—	V0		
<b>Approval data (UL/CUL and CSA)</b>			—		
Nominal voltage / current / conductor sizes		UL/CUL: [V]/[A]/AWG CSA: [V]/[A]/AWG	—		

<sup>1)</sup> When using ferrules with a plastic sleeve, 125 V max. can be achieved in connection with surge voltage category / contamination class II/2.







Description	No. of pos.	Dim. a [mm]
<b>Printed circuit screw termination blocks with housing interlocking, 3.5 mm pitch, color: green</b>	2	3.5
	3	7
	4	10.5
	5	14
	6	17.5
	7	21
	8	24.5
	9	28
	10	31.5
	11	35
	12	38.5
	13	42
	14	45.5
	15	49
	16	52.5

(1) **Coding profile**, is inserted into the hole on the plug, insulating material: red

(2) **Screwdriver**

**Technical data**

Dimensions	
Pitch	[mm]
Hole diameter	[mm]
Pin dimensions	[mm]x[mm]
<b>Technical data in accordance with IEC/ DIN VDE</b>	
Insulating material group	-
Surge voltage category / contamination class	-/-
Rated voltage	[V]
Rated surge voltage	[kV]
Nominal current / cross section	[A]/[mm²]
Maximum load current / cross section	[A]/[mm²]
<b>Connection capacity</b>	
Solid / stranded / conductor sizes	[mm²]/[mm²]/AWG
Stranded with ferrule without / with plastic sleeve	[mm²]
<b>Multiple connection (2 conductors with same cross section)</b>	
Solid / stranded	[mm²]
Stranded with ferrule without plastic sleeve	[mm²]
Stranded with TWIN ferrule with plastic sleeve	[mm²]
<b>Stripping length</b>	[mm]
<b>Internal cylindrical gauge (IEC 60 947-1)</b>	-
<b>Thread</b>	-
<b>Torque</b>	[Nm]
<b>Insulating material</b>	
Inflammability class in acc. with UL 94	
<b>Approval data (UL/CUL and CSA)</b>	
Nominal voltage / current / conductor sizes	UL/CUL: [V]/[A]/AWG CSA: [V]/[A]/AWG

Type	Order No.	Pcs./Pkt.
PT 1,5/2-PVH-3,5	19 84 01 5	250
PT 1,5/3-PVH-3,5	19 84 02 8	250
PT 1,5/4-PVH-3,5	19 84 03 1	250
PT 1,5/5-PVH-3,5	19 84 04 4	100
PT 1,5/6-PVH-3,5	19 84 05 7	100
PT 1,5/7-PVH-3,5	19 84 06 0	100
PT 1,5/8-PVH-3,5	19 84 07 3	100
PT 1,5/9-PVH-3,5	19 84 08 6	100
PT 1,5/10-PVH-3,5	19 84 09 9	100
PT 1,5/11-PVH-3,5	19 84 10 9	50
PT 1,5/12-PVH-3,5	19 84 11 2	50
PT 1,5/13-PVH-3,5	19 84 12 5	50
PT 1,5/14-PVH-3,5	19 84 13 8	50
PT 1,5/15-PVH-3,5	19 84 14 1	50
PT 1,5/16-PVH-3,5	19 84 15 4	50
<b>CP-PT 1,5</b>	<b>19 85 56 4</b>	<b>100</b>
<b>SZS 0,4 x 2,5</b>	<b>12 05 03 7</b>	<b>10</b>

see description

3.5

dependent on the pin strip used  
dependent on the pin strip used

	I	II / 2
III / 3	III / 2	II / 2
160	200	400
2.5	2.5	2.5
	8 / 1.5	
	8 / 1.5	

0.2 - 1.5 / 0.2 - 1.5 / 26 - 16  
- / (0.75')

0.2 - 0.34 / 0.2 - 0.5

-

-

5

-

M 2

0.25

PA

V0

300 / 10 / 26 - 16

\*) When using ferrules with a plastic sleeve, 125 V max. can be achieved in connection with surge voltage category / contamination class II/2.





Description	No. of pos.	Dim. a [mm]	Type	Order No.	Pcs./Pkt.
<b>Pluggable screw termination blocks with housing interlocking, 3.5 mm pitch, color: green</b>	2	3.5	PT 1,5/2-PH-3,5	19 84 31 6	250
	3	7	PT 1,5/3-PH-3,5	19 84 32 9	250
	4	10.5	PT 1,5/4-PH-3,5	19 84 33 2	250
	5	14	PT 1,5/5-PH-3,5	19 84 34 5	100
	6	17.5	PT 1,5/6-PH-3,5	19 84 35 8	100
	7	21	PT 1,5/7-PH-3,5	19 84 36 1	100
	8	24.5	PT 1,5/8-PH-3,5	19 84 37 4	100
	9	28	PT 1,5/9-PH-3,5	19 84 38 7	100
	10	31.5	PT 1,5/10-PH-3,5	19 84 39 0	100
	11	35	PT 1,5/11-PH-3,5	19 84 40 0	50
	12	38.5	PT 1,5/12-PH-3,5	19 84 41 3	50
	13	42	PT 1,5/13-PH-3,5	19 84 42 6	50
	14	45.5	PT 1,5/14-PH-3,5	19 84 43 9	50
	15	49	PT 1,5/15-PH-3,5	19 84 44 2	50
	16	52.5	PT 1,5/16-PH-3,5	19 84 45 5	50

**(1) Screwdriver**



<b>SZS 0,4 x 2,5</b>	<b>12 05 03 7</b>	<b>10</b>
----------------------	-------------------	-----------

**Technical data**

<b>Dimensions</b>	
Pitch	[mm]
Hole diameter	[mm]
Pin dimensions	[mm]x[mm]

see description		
3.5		
dependent on the pin strip used		
dependent on the pin strip used		

**Technical data in accordance with IEC/ DIN VDE**

Insulating material group	-
Surge voltage category / contamination class	-/-
Rated voltage	[V]
Rated surge voltage	[kV]
Nominal current / cross section	[A]/[mm <sup>2</sup> ]
Maximum load current / cross section	[A]/[mm <sup>2</sup> ]

	I		
III / 3	III / 2	II / 2	
160	200	400	
2.5	2.5	2.5	
	8 / 1.5		
	8 / 1.5		

**Connection capacity**

Solid / stranded / conductor sizes	[mm <sup>2</sup> ]/[mm <sup>2</sup> ]/AWG
Stranded with ferrule without / with plastic sleeve	[mm <sup>2</sup> ]

0.2 - 1.5 / 0.2 - 1.5 / 26 - 16
- / 0.75 <sup>1)</sup>

**Multiple connection (2 conductors with same cross section)**

Solid / stranded	[mm <sup>2</sup> ]
Stranded with ferrule without plastic sleeve	[mm <sup>2</sup> ]
Stranded with TWIN ferrule with plastic sleeve	[mm <sup>2</sup> ]

0.2 - 0.34 / 0.2 - 0.5
-
-

<b>Stripping length</b>	[mm]
-------------------------	------

5
---

<b>Internal cylindrical gauge (IEC 60 947-1)</b>	-
--	---

-
---

<b>Thread</b>	-
---------------	---

M 2
-----

<b>Torque</b>	[Nm]
---------------	------

0.25
------

<b>Insulating material</b>	
----------------------------	--

PA
----

<b>Inflammability class in acc. with UL 94</b>	
--	--

V0
----

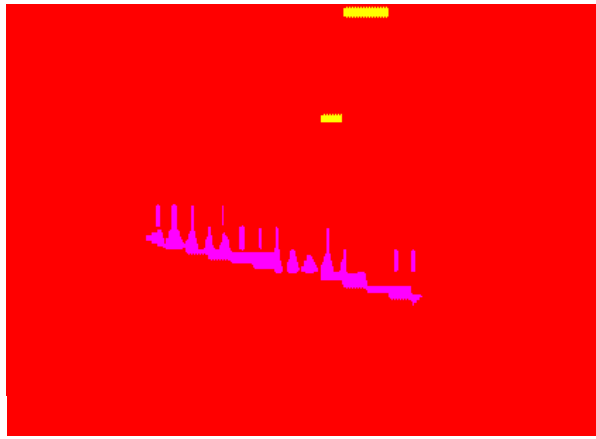
**Approval data (UL/CUL and CSA)**

Nominal voltage / current / conductor sizes	UL/CUL: [V]/[A]/AWG	CSA: [V]/[A]/AWG
---	---------------------	------------------

300 / 10 / 26 - 16	-
--------------------	---

<sup>1)</sup> When using ferrules with a plastic sleeve, 125 V max. can be achieved in connection with surge voltage category / contamination class II/2.





Description	No. of pos.	Dim. a [mm]	Type	Order No.	Pcs./Pkt.
<b>Pin strip, 3.5 mm pitch,</b> color: black	2	3.5	<b>PST 1,0/2-3,5</b>	<b>19 45 09 6</b>	50 <sup>1)</sup>
	3	7	<b>PST 1,0/3-3,5</b>	<b>19 45 10 6</b>	
	4	10.5	<b>PST 1,0/4-3,5</b>	<b>19 45 11 9</b>	
	5	14	<b>PST 1,0/5-3,5</b>	<b>19 45 12 2</b>	
	6	17.5	<b>PST 1,0/6-3,5</b>	<b>19 45 13 5</b>	
	7	21	<b>PST 1,0/7-3,5</b>	<b>19 45 14 8</b>	
	8	24.5	<b>PST 1,0/8-3,5</b>	<b>19 45 15 1</b>	
	9	28	<b>PST 1,0/9-3,5</b>	<b>19 45 16 4</b>	
	10	31.5	<b>PST 1,0/10-3,5</b>	<b>19 45 17 7</b>	
	11	35	<b>PST 1,0/11-3,5</b>	<b>19 45 18 0</b>	
	12	38.5	<b>PST 1,0/12-3,5</b>	<b>19 45 19 3</b>	
	13	42	<b>PST 1,0/13-3,5</b>	<b>19 45 20 3</b>	
	14	45.5	<b>PST 1,0/14-3,5</b>	<b>19 45 21 6</b>	
	15	49	<b>PST 1,0/15-3,5</b>	<b>19 45 22 9</b>	
	16	52.5	<b>PST 1,0/16-3,5</b>	<b>19 45 23 2</b>	

<b>Technical data</b>				
Dimensions		see description		
Pitch	[mm]	3.5		
Hole diameter	[mm]	1.2		
Pin dimensions	[mm]x[mm]	∅ 1		
<b>Technical data in accordance with IEC/ DIN VDE</b>				
Insulating material group	-		IIIa	
Surge voltage category / contamination class	-/-	III / 3	III / 2	II / 2
Rated voltage	[V]	160	250	250
Rated surge voltage	[kV]	2.5	2.5	2.5
Nominal current / cross section	[A]/[mm <sup>2</sup> ]		8 <sup>2)</sup>	
Maximum load current / cross section	[A]/[mm <sup>2</sup> ]		8 <sup>2)</sup>	
<b>Insulating material</b>		PA		
Inflammability class in acc. with UL 94		V0		
<b>Approval data (UL/CUL and CSA)</b>				
Nominal voltage / current / conductor sizes	UL/CUL: [V]/[A]/AWG CSA: [V]/[A]/AWG	300 / 10 / -- --		

1) Larger packing units are available on request.  
 2) The maximum current depends on the plug used. The lower value of the two for plug and pin strip is the deciding factor.

