



Chipsmall Limited consists of a professional team with an average of over 10 year of expertise in the distribution of electronic components. Based in Hongkong, we have already established firm and mutual-benefit business relationships with customers from,Europe,America and south Asia,supplying obsolete and hard-to-find components to meet their specific needs.

With the principle of “Quality Parts,Customers Priority,Honest Operation,and Considerate Service”,our business mainly focus on the distribution of electronic components. Line cards we deal with include Microchip,ALPS,ROHM,Xilinx,Pulse,ON,Everlight and Freescale. Main products comprise IC,Modules,Potentiometer,IC Socket,Relay,Connector.Our parts cover such applications as commercial,industrial, and automotives areas.

We are looking forward to setting up business relationship with you and hope to provide you with the best service and solution. Let us make a better world for our industry!



Contact us

Tel: +86-755-8981 8866 Fax: +86-755-8427 6832

Email & Skype: info@chipsmall.com Web: www.chipsmall.com

Address: A1208, Overseas Decoration Building, #122 Zhenhua RD., Futian, Shenzhen, China



MICRO PINS

- Precision engineered and manufactured
- Space saving design for high density packaging
- Micro pins are available in .017 (.43) to .080 (2.03) diameters
- Ideal for mating with our standard line of micro jacks
- Available for press-fit, swage or solder mounting
- Custom micro pins manufactured to your specifications
- Other platings available upon request

SPECIFICATIONS

Material: Brass, ASTM-B16

Plating:

Gold: .000005 per MIL-G-45204

Tin: .000200 to .000300 per

MIL-T-10727, Type 1

RoHS (RoHS Compliant)

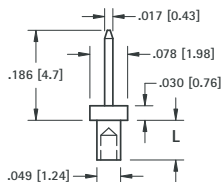
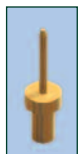
DASH NUMBERS (L Dimension)

- 1 for .032 (.81) thick Board
- 2 for .062 (1.57) thick Board
- 3 for .093 (2.36) thick Board
- 4 for .125 (3.2) thick Board

Example: 1967-1 for .032 (.81) thick Board
1967-2 for .062 (1.57) thick Board

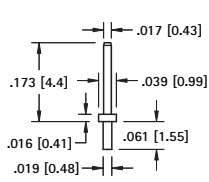


.017 (.43) PIN - SWAGE MOUNT



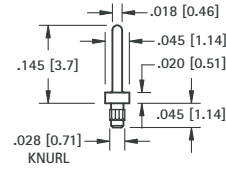
GOLD CAT. NO.	TIN CAT. NO.	L Length	Mtg. Hole Dia.
1967-1	1968-1	.051 (1.3)	.052 (1.32)
1967-2	1968-2	.082 (2.0)	(1.32)

.017 (.43) PIN - SOLDER MOUNT



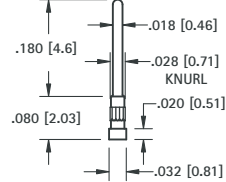
GOLD CAT. NO.	TIN CAT. NO.	Mtg. Hole Dia.
1378-1	1379-1	.022 (.56)

.018 (.46) PIN - PRESS-FIT



GOLD CAT. NO.	TIN CAT. NO.	Mtg. Hole Dia.
1986-1	1987-1	.026 (.66)

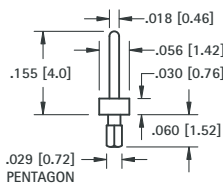
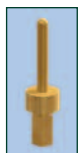
.018 (.46) PIN - PRESS-FIT



MATERIAL: Phosphor Bronze

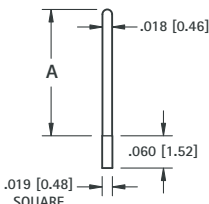
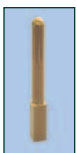
GOLD CAT. NO.	TIN CAT. NO.	Mtg. Hole Dia.
1990-2	1991-2	.026 (.66)

.018 (.46) PIN - PRESS-FIT



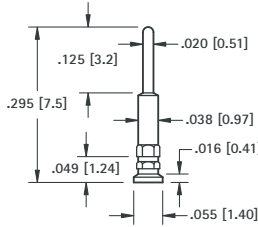
GOLD CAT. NO.	TIN CAT. NO.	Mtg. Hole Dia.
1988-2	1989-2	.026 (.66)

.018 (.46) PIN - PRESS-FIT



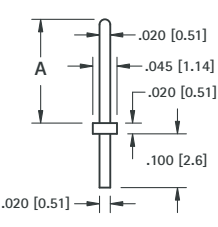
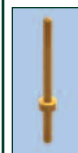
GOLD CAT. NO.	TIN CAT. NO.	A Dim.	Mtg. Hole Dia.
1992-2	1994-2	.243 (6.2)	.022 (.56)
1993-2	1995-2	.140 (3.6)	(.56)

.020 (.51) PIN - PRESS-FIT



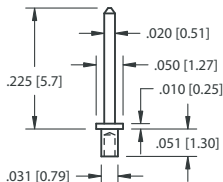
GOLD CAT. NO.	TIN CAT. NO.	Mtg. Hole Dia.
1996-2	1997-2	.040 (1.01)

.020 (.51) PIN - SOLDER MOUNT



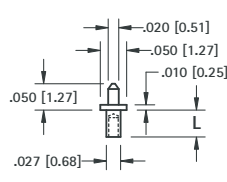
GOLD CAT. NO.	TIN CAT. NO.	A Dim.	Mtg. Hole Dia.
1998-3	2000-3	.250 (6.4)	.024 (.61)
1999-3	2001-3	.425 (10.8)	(.61)

.020 (.51) PIN - SWAGE MOUNT



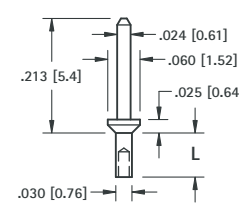
GOLD CAT. NO.	TIN CAT. NO.	Mtg. Hole Dia.
1366-1	1367-1	.035 (.89)

.020 (.51) PIN - SWAGE MOUNT



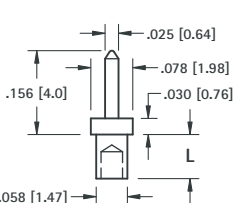
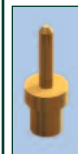
GOLD CAT. NO.	TIN CAT. NO.	L Length	Mtg. Hole Dia.
1372-1	1373-1	.051 (1.3)	.031 (.78)
1372-2	1373-2	.082 (2.1)	(.78)

.024 (.61) PIN - SWAGE MOUNT



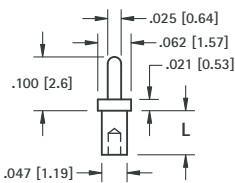
GOLD CAT. NO.	TIN CAT. NO.	L Length	Mtg. Hole Dia.
1406-1	1426-1	.047 (1.2)	.035 (.89)
1406-2	1426-2	.078 (1.9)	(.89)

.025 (.64) PIN - SWAGE MOUNT



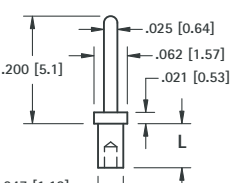
GOLD CAT. NO.	TIN CAT. NO.	L Length	Mtg. Hole Dia.
1408-1	1428-1	.062 (1.6)	.062 (1.57)
1408-2	1428-2	.094 (2.4)	(1.57)

.025 (.64) PIN - SWAGE MOUNT



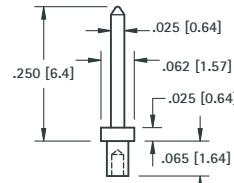
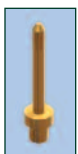
GOLD CAT. NO.	TIN CAT. NO.	L Length	Mtg. Hole Dia.
1404-1	1424-1	.051 (1.3)	.052 (1.32)
1404-2	1424-2	.082 (2.1)	(1.32)

.025 (.64) PIN - SWAGE MOUNT



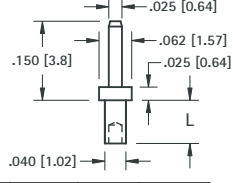
GOLD CAT. NO.	TIN CAT. NO.	L Length	Mtg. Hole Dia.
1407-1	1427-1	.051 (1.3)	.052 (1.32)
1407-2	1427-2	.082 (2.1)	(1.32)

.025 (.64) PIN - SWAGE MOUNT



GOLD CAT. NO.	TIN CAT. NO.	Mtg. Hole Dia.
1401-1	1421-1	.043 (1.09)

.025 (.64) PIN - SWAGE MOUNT



GOLD CAT. NO.	TIN CAT. NO.	L Length	Mtg. Hole Dia.
1368-1	1369-1	.051 (1.3)	.043 (1.09)
1368-2	1369-2	.082 (2.1)	(1.09)
1368-3	1369-3	.113 (2.9)	(1.09)