



Chipsmall Limited consists of a professional team with an average of over 10 year of expertise in the distribution of electronic components. Based in Hongkong, we have already established firm and mutual-benefit business relationships with customers from,Europe,America and south Asia,supplying obsolete and hard-to-find components to meet their specific needs.

With the principle of “Quality Parts,Customers Priority,Honest Operation,and Considerate Service”,our business mainly focus on the distribution of electronic components. Line cards we deal with include Microchip,ALPS,ROHM,Xilinx,Pulse,ON,Everlight and Freescale. Main products comprise IC,Modules,Potentiometer,IC Socket,Relay,Connector.Our parts cover such applications as commercial,industrial, and automotives areas.

We are looking forward to setting up business relationship with you and hope to provide you with the best service and solution. Let us make a better world for our industry!



## Contact us

Tel: +86-755-8981 8866 Fax: +86-755-8427 6832

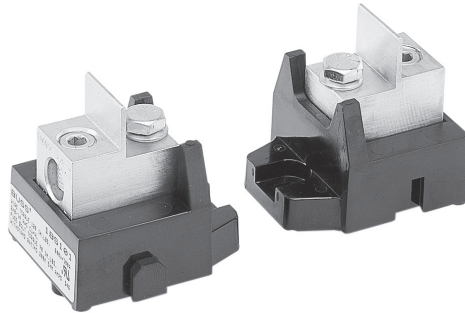
Email & Skype: info@chipsmall.com Web: www.chipsmall.com

Address: A1208, Overseas Decoration Building, #122 Zhenhua RD., Futian, Shenzhen, China



# 1BS101 modular fuse block, 600 V, 100 A

RoHS

**Catalog number:**

- 1BS101

**Description:**

Bussmann™ series modular fuse block for bolt-on high speed, Class J (70-100 A), 600 V Class T (70-100 A) and select BS88 fuses. See mounting dimensions table for applicable Bussmann series fuse catalog symbols. Dovetail interlock on each side of the base allows mounting multiple poles adjacent to one another.

**Specifications:****Ratings**

- Volts - 600 V
- Amps - 100 A
- Withstand rating - 200 kA RMS Sym. or the applied fuse interrupting rating, whichever is less

**Agency information**

- UL® Recognized, Guide IZLT2, File E14853
- CSA® Certified, Class 6225-01, File 47235
- CE
- RoHS compliant

**Materials**

- Base - molded black phenolic, 150°C
- Mounting bolts - zinc plated steel, 1/4-20 x 1/2"
- Washer - zinc plated steel 1/4" Belleville
- Connector: tin-plated aluminum

**Conductors**

- Connector accepts single 14 AWG - 2/0 copper or aluminum, solid or stranded wire

**Torque**

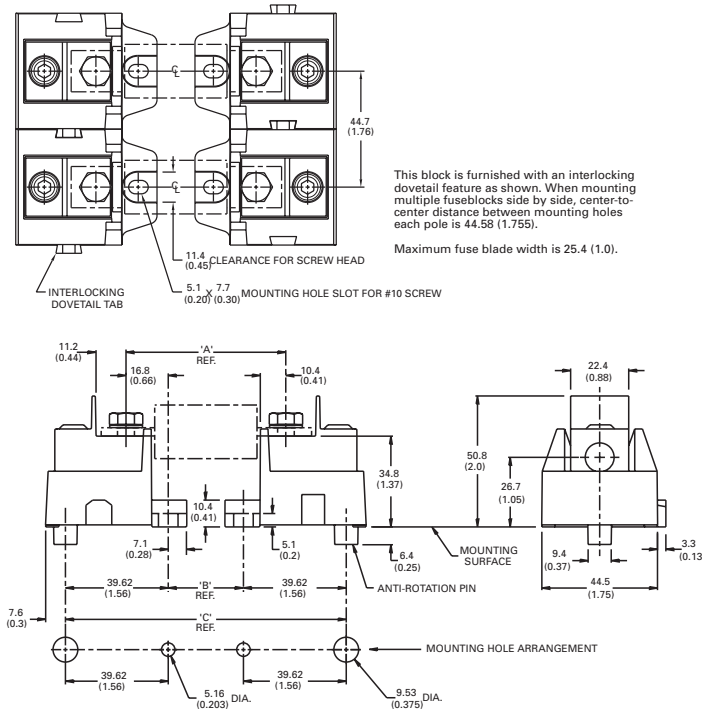
- Conductor setscrew - 13.6 N•m (120 Lb-in)
- Fuse mounting bolt - 7.9 N•m (70 Lb-in)

**EATON**

Powering Business Worldwide

**Dimensions: — mm/in**

See Table 1 for A, B and C dimensions per fuse catalog symbol/ampacity.



**Table 1. Mounting dimensions — mm (in)**

Bussmann series fuse catalog symbol	Amp range	A	B	C
FWA-_A	70-100	49.3 (1.94)	16.0 (0.63)	95.4 (3.75)
FWH-_B	35-60	58.9 (2.32)	25.6 (1.01)	104.9 (4.13)
FWH-_B	70-100	72.4 (2.85)	39.1 (1.54)	118.3 (4.66)
FWX-_A	35-60	59.4 (2.34)	26.1 (1.03)	105.4 (4.15)
FWX-_A	70-100	59.7 (2.35)	26.4 (1.04)	105.6 (4.16)
KAC_-	1-30	63.5 (2.50)	30.2 (1.19)	109.4 (4.31)
KAC_-	35-60	88.9 (3.50)	55.6 (2.19)	134.8 (5.31)
KAC_-	70-100	105.7 (4.16)	72.3 (2.85)	151.6 (5.97)
KBC_-	35-60	88.9 (3.50)	55.6 (2.19)	134.8 (5.31)
KBC_-	70-100	93.0 (3.66)	59.6 (2.35)	138.9 (5.47)
LPJ-_SP-_SP	70-100	95.5 (3.76)	62.2 (2.45)	141.4 (5.57)
JJS_-	70-100	59.9 (2.36)	26.6 (1.05)	105.9 (4.17)
JKS_-	70-100	96.3 (3.79)	62.9 (2.48)	142.2 (5.60)
_L14C	80-100	89.9 (3.54)	56.6 (2.23)	135.8 (5.35)
_L09C	80-100	112.0 (4.41)	78.7 (3.10)	157.9 (6.22)

The only controlled copy of this data sheet is the electronic read-only version located on the Eaton network drive. All other copies of this document are by definition uncontrolled. This bulletin is intended to clearly present comprehensive product data and provide technical information that will help the end user with design applications. Eaton reserves the right, without notice, to change design or construction of any products and to discontinue or limit distribution of any products. Eaton also reserves the right to change or update, without notice, any technical information contained in this bulletin. Once a product has been selected, it should be tested by the user in all possible applications.

**Eaton**  
1000 Eaton Boulevard  
Cleveland, OH 44122  
Eaton.com

Bussmann Division  
114 Old State Road  
Ellisville, MO 63021  
United States  
Eaton.com/bussmannseries

© 2016 Eaton  
All Rights Reserved  
Printed in USA  
Publication No. 1206 — SB98107  
December 2016

Eaton and Bussmann are valuable trademarks of Eaton in the U.S. and other countries. You are not permitted to use the Eaton trademarks without prior written consent of Eaton.

CSA is a registered trademark of the Canadian Standards Group.  
UL is a registered trademark of the Underwriters Laboratories, Inc.

For Eaton's Bussmann series product information, call **1-855-287-7626** or visit: **Eaton.com/bussmannseries**



Follow us on social media to get the latest product and support information.

