



Chipsmall Limited consists of a professional team with an average of over 10 year of expertise in the distribution of electronic components. Based in Hongkong, we have already established firm and mutual-benefit business relationships with customers from,Europe,America and south Asia,supplying obsolete and hard-to-find components to meet their specific needs.

With the principle of "Quality Parts,Customers Priority,Honest Operation,and Considerate Service",our business mainly focus on the distribution of electronic components. Line cards we deal with include Microchip,ALPS,ROHM,Xilinx,Pulse,ON,Everlight and Freescale. Main products comprise IC,Modules,Potentiometer,IC Socket,Relay,Connector.Our parts cover such applications as commercial,industrial, and automotives areas.

We are looking forward to setting up business relationship with you and hope to provide you with the best service and solution. Let us make a better world for our industry!



## Contact us

Tel: +86-755-8981 8866 Fax: +86-755-8427 6832

Email & Skype: info@chipsmall.com Web: www.chipsmall.com

Address: A1208, Overseas Decoration Building, #122 Zhenhua RD., Futian, Shenzhen, China



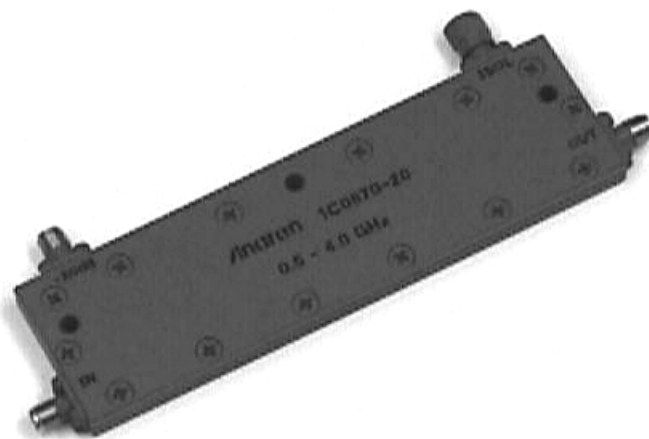


# Model 1C0870-20

## Directional Couplers "In-Line" Style

### Applications

- Subassemblies
- Lab Systems
- Leveling Loops
- Power Monitoring
- Test and Calibration



### Features

- Military Grade
- 0.5 - 4.0 GHz
- "In-Line" Configuration
- Connectors Per MIL-C-39012
- Rugged Aluminum Housing
- Built in Termination

### Electrical Specifications

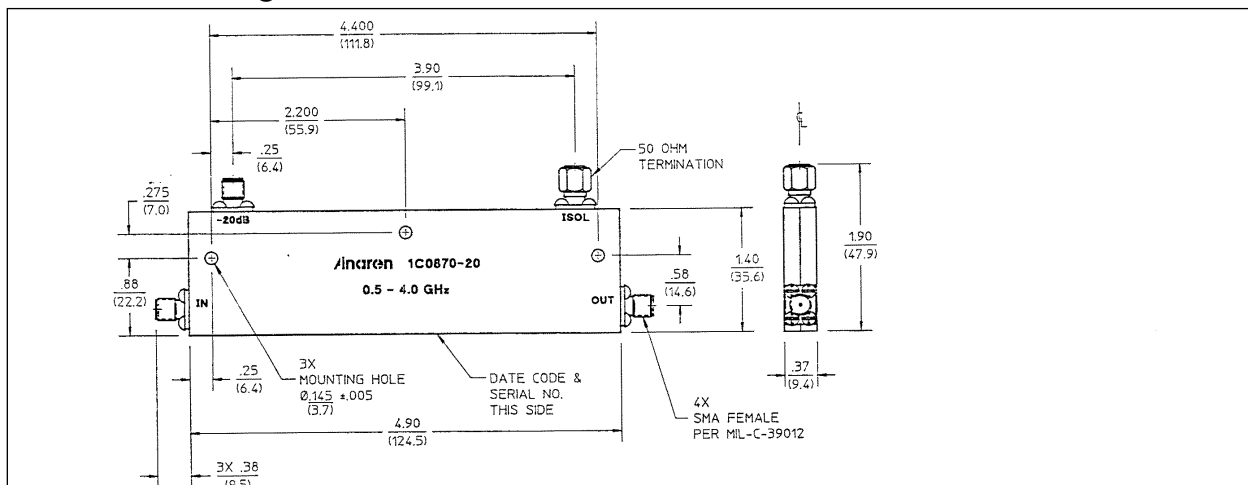
Model#	Frequency GHz	Coupling dB Mean	Insert. Loss dB Max	Input VSWR Max:1
1C0870-20	0.5 - 4.0	20.0 ± 1.5	0.50	1.30

Model #	Freq. Sems. dB Max	Directivity dB Min/Typ	Max CW Power* Forward	Backward
1C0870-20	±1.5	17/20	100	50

**Notes: Electrical and Mechanical Specifications subject to change without notice.** Impedance: 50 ohms nominal. Meets MIL-E-5400 Class 3 requirements. Additional screening available for military and space applications. \*These power ratings apply when coupled port VSWR is 2.0:1 or less. Higher power can be handled with a lower VSWR termination. In general the Max CW Power is identical to 3 dB couplers when there is no internal termination or one supplied by Anaren. All models have SMA connectors.

### Outline Drawing



**Sales Desk USA:** Voice: (800) 544-2414 Fax: (315) 432-9121  
**Sales Desk Europe:** Voice: (+44) 23 92 232392 Fax: (+44) 23 92 251369