



Chipsmall Limited consists of a professional team with an average of over 10 year of expertise in the distribution of electronic components. Based in Hongkong, we have already established firm and mutual-benefit business relationships with customers from,Europe,America and south Asia,supplying obsolete and hard-to-find components to meet their specific needs.

With the principle of “Quality Parts,Customers Priority,Honest Operation,and Considerate Service”,our business mainly focus on the distribution of electronic components. Line cards we deal with include Microchip,ALPS,ROHM,Xilinx,Pulse,ON,Everlight and Freescale. Main products comprise IC,Modules,Potentiometer,IC Socket,Relay,Connector.Our parts cover such applications as commercial,industrial, and automotives areas.

We are looking forward to setting up business relationship with you and hope to provide you with the best service and solution. Let us make a better world for our industry!



Contact us

Tel: +86-755-8981 8866 Fax: +86-755-8427 6832

Email & Skype: info@chipsmall.com Web: www.chipsmall.com

Address: A1208, Overseas Decoration Building, #122 Zhenhua RD., Futian, Shenzhen, China

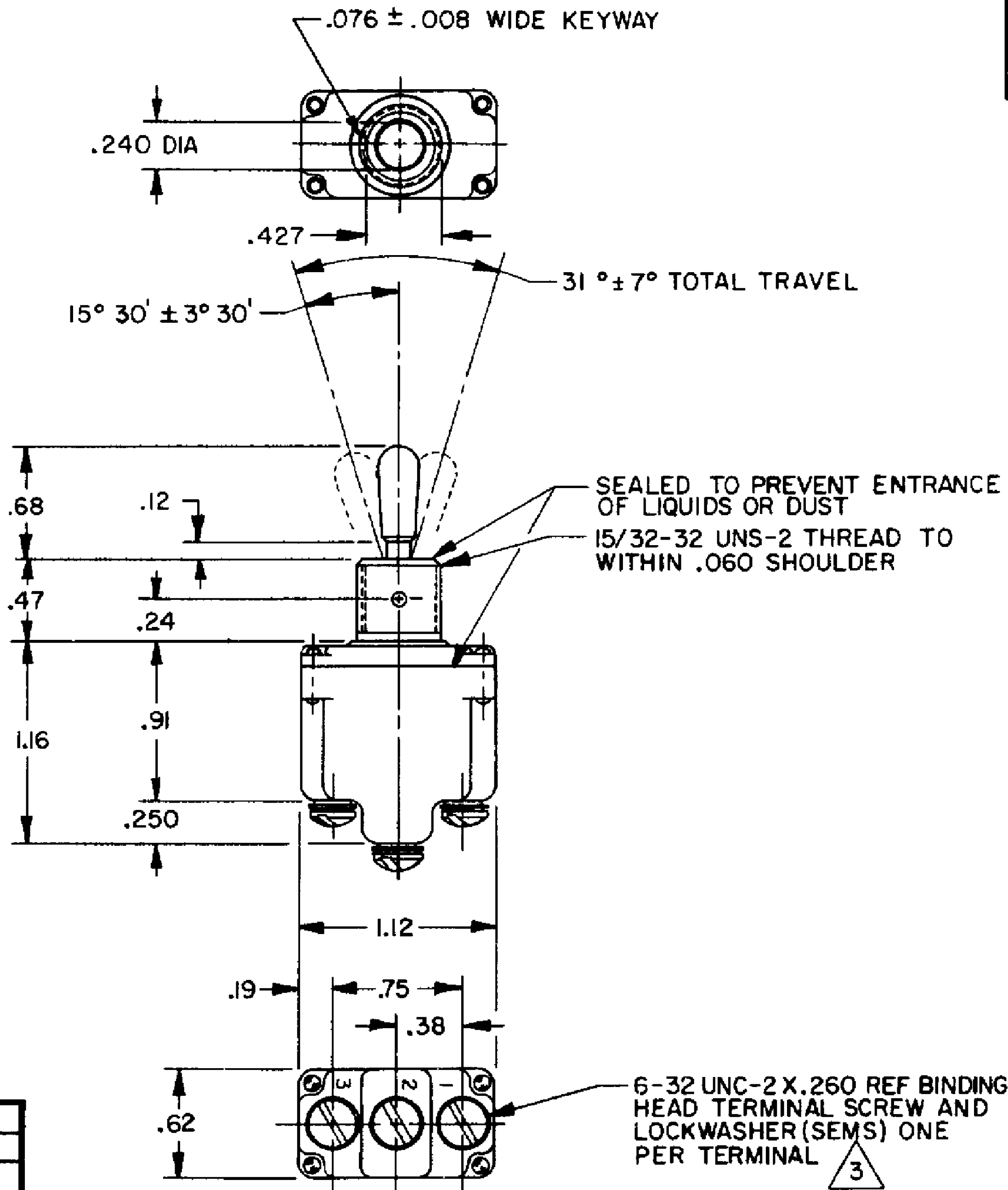


MICRO SWITCH
FREEPORT ILLINOIS U.S.A.
A DIVISION OF HONEYWELL
FED MFG CODE 91829

SWITCH-TOGGLE

CATALOG LISTING
1TL887 SERIES
CHART 1

THIS DRAWING COVERS A PROPRIETARY ITEM AND IS THE PROPERTY OF MICRO SWITCH A DIVISION OF HONEYWELL THIS DRAWING IS NOT TO BE COPIED OR USED WITHOUT THE APPROVAL OF MICRO SWITCH



SCALE FULL
DO NOT SCALE PRINT
UNLESS OTHERWISE NOTED
DIMENSIONS ARE IN INCHES
TOLERANCES ARE
ONE PLACE (.01) ± .030
TWO PLACE (.001) ± .015
THREE PLACE (.0001) ± .005
ANGLES ± .005
WEIGHT 07 LBS APPROX

15A 125, 250, 277 VAC
1/2 HP 125 VAC,
1 HP 250, 277 VAC
5A 125 VAC "L" L191

UL CE

10A 125, 250, 277 VAC
1/4 HP 125 VAC,
1/2 HP 250, 277 VAC
3A 125 VAC "L" L192

UL CE

CATALOG LISTING	CIRCUIT MADE WITH TOGGLE LEVER IN	CURRENT CAPACITY (AMPS)							
		RESISTIVE LOAD DC VOLTS				LAMP LOAD 28 VDC		INDUCTIVE LOAD 28 VDC	
		28	125	250	125	250	28	125	28
ITL887-1	ON								
ITL887-2	OFF								
ITL887-3	ON								
ITL887-2I	NONE								
ITL887-3I	NONE								
ITL887-4	MOM OFF								
ITL887-5	MOM ON								
ITL887-6	MOM ON								
ITL887-7	MOM ON								
ITL887-8	MOM ON								
ITL887-5I	NONE								
ITL887-6I	MOM ON								

NOTES

- SWITCHES ARE CAPABLE OF WITHSTANDING A TEMPERATURE OF 160°F CONTINUOUSLY AT FULL RATED LOAD
- CIRCUIT DESIGNATION AND MICRO SWITCH CATALOG LISTING MARKED ON SIDE OF SWITCH
- FURNISHED UNASSEMBLED
- FOR TERMINAL COVER, SEE MICRO SWITCH CATALOG LISTING 5PA7
- APPLIES ONLY TO "ON" AND "MOMENTARY ON" POSITIONS
- CONFORMS TO REQUIREMENTS OF MIL-DTL-3950 EXCEPT: GOLD PLATED CONTACTS
- WARNING- THIS PRODUCT IS SUBJECT TO THE U.S. INTERNATIONAL TRAFFIC IN ARMS REGULATIONS (ITAR), AND THE EXPORT CONTROL LAWS OF THE UNITED STATES. TRANSFER OF TECHNICAL DATA PERTAINING TO THIS PRODUCT BY ANY MEANS TO A FOREIGN PERSON PER ITAR DEFINITIONS. WHETHER IN THE UNITED STATES OR ABROAD, WITHOUT A PRIOR EXPORT LICENSE OR OTHER APPROVAL FROM THE U.S. DEPARTMENT OF STATE, IS PROHIBITED.

