



Chipsmall Limited consists of a professional team with an average of over 10 year of expertise in the distribution of electronic components. Based in Hongkong, we have already established firm and mutual-benefit business relationships with customers from,Europe,America and south Asia,supplying obsolete and hard-to-find components to meet their specific needs.

With the principle of “Quality Parts,Customers Priority,Honest Operation,and Considerate Service”,our business mainly focus on the distribution of electronic components. Line cards we deal with include Microchip,ALPS,ROHM,Xilinx,Pulse,ON,Everlight and Freescale. Main products comprise IC,Modules,Potentiometer,IC Socket,Relay,Connector.Our parts cover such applications as commercial,industrial, and automotives areas.

We are looking forward to setting up business relationship with you and hope to provide you with the best service and solution. Let us make a better world for our industry!



Contact us

Tel: +86-755-8981 8866 Fax: +86-755-8427 6832

Email & Skype: info@chipsmall.com Web: www.chipsmall.com

Address: A1208, Overseas Decoration Building, #122 Zhenhua RD., Futian, Shenzhen, China

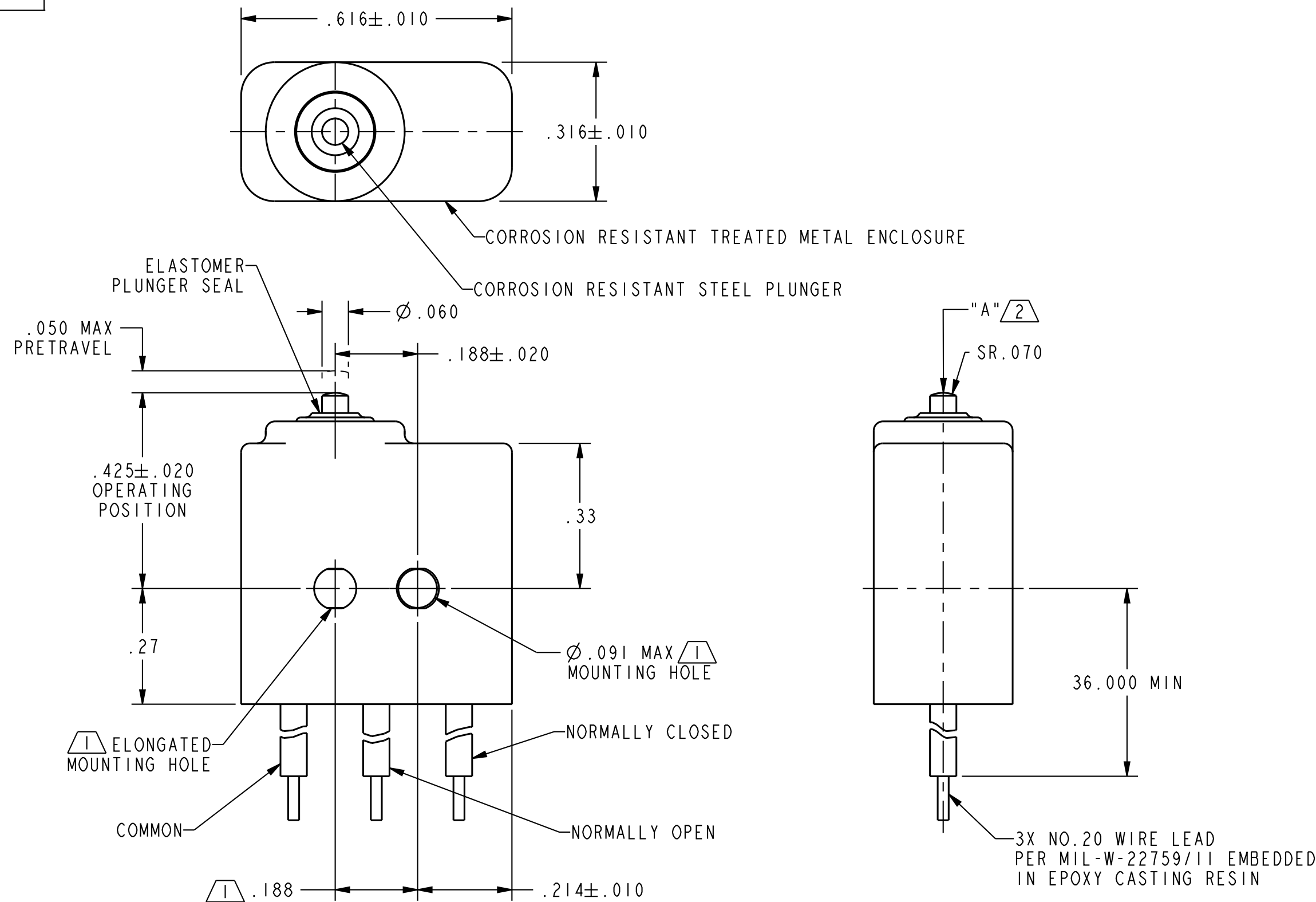


PART NUMBER

1XE1-3

REVISION HISTORY

REV	DOCUMENT	DESCRIPTION	CHGD BY	DATE	APPROVED
5	0110496	REDRAWN WITH CHANGE	RH	2014-05-19	D. TRETTER



NOTES:

- 1 - MOUNTING HOLES WILL ACCEPT Ø.087 MAX PINS OR SCREWS ON Ø.188 ± .002 CENTERS
- 2 - ACTUATION IN LINE WITH ARROW "A" IS RECOMMENDED
- 3 - WEIGHT OF SWITCH ONLY IS .16 OZ MAX. WEIGHT OF SWITCH WITH WIRE LEADS IS 1.75 OZ MAX
- 4 - MTF

	MTTF (HOURS/FAILURE)	MTTFd (HOURS/FAILURE)
RESISTIVE LOAD	228335	228335
RESISTIVE LOAD (50% DERATED)	737074	737074
INDUCTIVE LOAD	228335	228335
INDUCTIVE LOAD (50% DERATED)	737074	737074

MTTF CALCULATION ARE BASED ON MIL-HDBK-217F, NOTICE 2, CANNON, LAUNCH (CL) ENVIRONMENT. ACTUAL MTF MAY VARY BASED ON APPLICATION AND ENVIRONMENTAL CONDITIONS

PERFORMANCE DETAILS:

STANDARD:	CONFORMS TO MIL-PRF-8805/32 (EXCEPT AS NOTED)	VALUE
ALTITUDE	MIL-PRF-8805, METHOD 4.7.30	50,000 FEET
DIELECTRIC STRENGTH	MIL-PRF-8805, METHOD 4.7.4	1000 vrms, 500µA LEAKAGE MAX.
ELECTRICAL ENDURANCE	MIL-PRF-8805, METHOD 4.7.30	25,000 CYCLES
INSULATION RESISTANCE	MIL-PRF-8805, METHOD 4.7.5	500 VDC, 1000 MΩ MIN
MARKING VISIBILITY	MIL-PRF-8805, METHOD 4.7.16	
MECHANICAL ENDURANCE	MIL-PRF-8805, METHOD 4.7.25	25,000 CYCLES
MOISTURE RESISTANCE	MIL-PRF-8805, METHOD 4.7.15	10 DAY TEST
OVERLOAD CYCLING	MIL-PRF-8805, METHOD 4.7.29	
SALT SPRAY	MIL-PRF-8805, METHOD 4.7.17	96 HOUR TEST
SEAL	MIL-PRF-8805, METHOD 4.7.3.2	SYMBOL 3, WATERTIGHT
SHOCK-SAWTOOTH	MIL-PRF-8805, METHOD 4.7.13	100 G's, 6 MILLISECONDS (10µSEC)
TEMPERATURE RANGE	MIL-PRF-8805, METHOD 4.7.25 & 4.7.30	-55°C TO +85°C
TEMPERATURE RISE	MIL-PRF-8805, METHOD 4.7.30	+50°C MAX @ RATED RESISTIVE LOAD
VIBRATION-SINUSOIDAL	MIL-PRF-8805, METHOD 4.7.12	15 G's, 10-2000 HZ (10µSEC)

CHARACTERISTICS	ELECTRICAL DATA	UNLESS OTHERWISE SPECIFIED DIMENSIONS ARE IN INCHES DECIMAL TOL NO PLACE --- 1 PLACE --- ±.030 2 PLACE --- ±.015 3 PLACE --- ±.005 ANGULAR TOL - CHAMFER -	THIRD ANGLE PROJECTION	Honeywell				
OPERATING FORCE----- 5-17 OZ	CONTACT ARRANGEMENT S P D T			TITLE SWITCH - BASIC				
RELEASE FORCE----- 4 OZ MIN	28 VOLTS DC RATING			SIZE C	CAGE CODE -	DWG NO 1XE1-3	TYPE I	REV 5
RELEASE TRAVEL----- .004 MIN	INDUCTIVE --- SEA LEVEL - 4 AMP 50,000 FT - 2.5 AMP			SCALE 3:1	REF WT: SEE NOTE 3	SHEET 1 of 1	HONEYWELL CONFIDENTIAL	
DIFFERENTIAL TRAVEL----- .005 MAX	RESISTIVE --- SEA LEVEL - 7 AMP 50,000 FT - 7 AMP			RELEASE DATE 2014-05-19	DRW: H. RAVIKIRAN 2014-05-08	QA: J. BALDAZZI 2014-05-19	THIS DOCUMENT CONTAINS PROPRIETARY INFORMATION AND SUCH INFORMATION MAY NOT BE DISCLOSED TO OTHERS FOR ANY PURPOSE, NOR USED FOR MANUFACTURING PURPOSES WITHOUT WRITTEN PERMISSION FROM HONEYWELL	
OVERTRAVEL----- .004 MIN	MAXIMUM INRUSH ----- 24 AMP			COMPUTER GENERATED DRAWING: PRO/ENGINEER	CHK: H. CHANDRA 2014-05-19			