



Chipsmall Limited consists of a professional team with an average of over 10 year of expertise in the distribution of electronic components. Based in Hongkong, we have already established firm and mutual-benefit business relationships with customers from,Europe,America and south Asia,supplying obsolete and hard-to-find components to meet their specific needs.

With the principle of "Quality Parts,Customers Priority,Honest Operation,and Considerate Service",our business mainly focus on the distribution of electronic components. Line cards we deal with include Microchip,ALPS,ROHM,Xilinx,Pulse,ON,Everlight and Freescale. Main products comprise IC,Modules,Potentiometer,IC Socket,Relay,Connector.Our parts cover such applications as commercial,industrial, and automotives areas.

We are looking forward to setting up business relationship with you and hope to provide you with the best service and solution. Let us make a better world for our industry!



Contact us

Tel: +86-755-8981 8866 Fax: +86-755-8427 6832

Email & Skype: info@chipsmall.com Web: www.chipsmall.com

Address: A1208, Overseas Decoration Building, #122 Zhenhua RD., Futian, Shenzhen, China

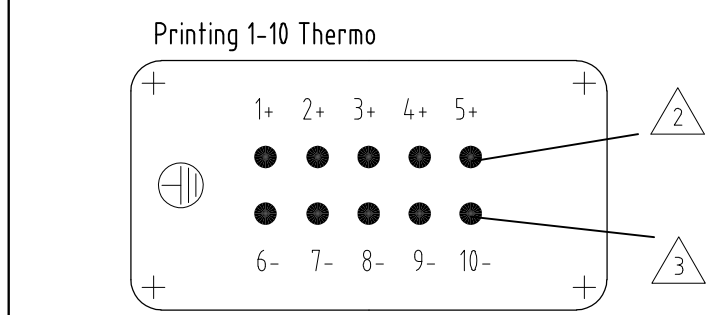
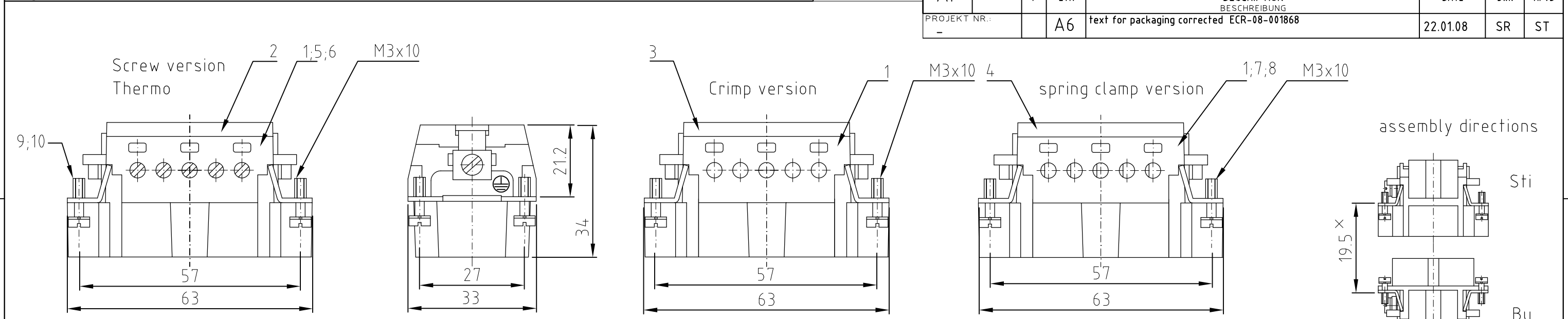


4

3

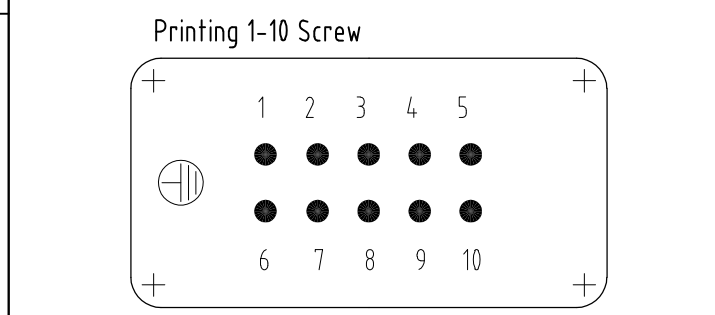
2

1



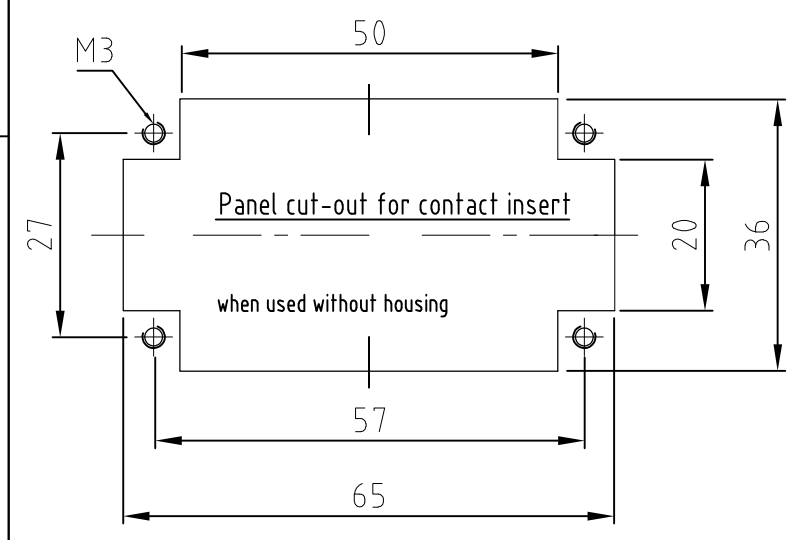
Contact arrangement

view from termination side



- NOTES:
- 1 SUITABLE CRIMP CONTACTS: SERIES HE/HA OUTER DIMENSIONS OF INSULATION: MAX. Ø3,2 MM
 - 2 SUITABLE HOOD SIZE 4: SERIES HB, HD, HIP, EMV SUITABLE INSERTION AND EXTRACTION TOOL: SCREWDRIVER 0,5x3 DIN 5264
 - 3 Strip length: Screw conection 10mm Spring clamp conection 10mm Crimp conection 7.5mm
 - 4 STANDARDS: DIN EN 61984; DIN EN 60664-1
 - 5 PACKAGING: 5 SETS IN A CARTON, PRE-MOUNTED
 - 6 SPECIAL PACKAGING: Krauss-Maffei PACKAGING UNIT: 250 PIECES

		4						fixing screw	stainless steel	even		10	M3x10
4	4	4	4	4	4	4	4	fixing screw	steel	nickel plated	blue	9	M3x10
10								contact spring clamp	brass	gold plated		8	
							10	contact pin	brass	silver plated		7	
							10	contact screw termination	brass	gold plated		6	
	10	10					10	contact screw termination	brass	silber plated		5	
1							1	cover spring version			light grey	4	
							1	cover crimp version			light grey	3	
	1	1	1				1	cover screw version			light grey	2	
	1	1	1	1	1	1	1	pin insert			light grey	1	
0-3	0-2	0-1	9-5	7-1	2-3	1-7	1-1	DESCRIPTION / BENENNUNG	MATERIAL	SURFACE	COLOR	ITEM NO. POS.	NOTES



ORDERING TEXT / BESTELLTEXT

THIS DRAWING IS A CONTROLLED DOCUMENT FOR AMP INCORPORATED. IT IS SUBJECT TO CHANGE AND THE CONTROLLING ENGINEERING ORGANIZATION SHOULD BE CONTACTED FOR THE LATEST REVISION. DIMENSIONS: DIMENSIONEN: mm. TOLERANCES UNLESS OTHERWISE SPECIFIED: ALLGEMEINTOLERANZEN. ISO 8015. ISO 2768 - mH - E. DIN 16901 - 14.0. ANGLES / WINKEL #. FINISH / OBERFLAECHE / FARBE.

DWN: Gräf 10.02.1999. CHK: Schweiger 18.02.1999.

NAME: Tyco Electronics. HTS Elektrotechnik. 53819 Neunkirchen, Germany.

PRODUCT SPEC: Male insert. HE.10.STI.S/C.

APPLICATION SPEC: VERARBEITUNGSSPEZ.

SIZE: A3. CAGE CODE: 00779. DRAWING NO: 1103636. RESTRICTED TO NUR FUER.

SCALE: MASSSTAB 1:1. SHEET: BLATT 1. OF: VON 1. REV: A6.