



Chipsmall Limited consists of a professional team with an average of over 10 year of expertise in the distribution of electronic components. Based in Hongkong, we have already established firm and mutual-benefit business relationships with customers from,Europe,America and south Asia,supplying obsolete and hard-to-find components to meet their specific needs.

With the principle of "Quality Parts,Customers Priority,Honest Operation,and Considerate Service",our business mainly focus on the distribution of electronic components. Line cards we deal with include Microchip,ALPS,ROHM,Xilinx,Pulse,ON,Everlight and Freescale. Main products comprise IC,Modules,Potentiometer,IC Socket,Relay,Connector.Our parts cover such applications as commercial,industrial, and automotives areas.

We are looking forward to setting up business relationship with you and hope to provide you with the best service and solution. Let us make a better world for our industry!



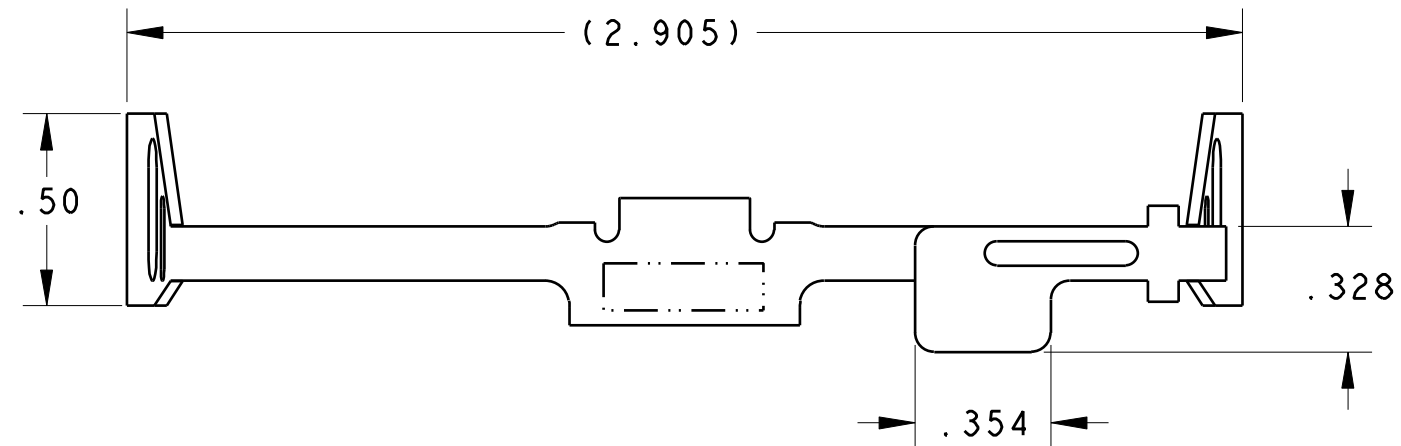
## Contact us

Tel: +86-755-8981 8866 Fax: +86-755-8427 6832

Email & Skype: [info@chipsmall.com](mailto:info@chipsmall.com) Web: [www.chipsmall.com](http://www.chipsmall.com)

Address: A1208, Overseas Decoration Building, #122 Zhenhua RD., Futian, Shenzhen, China

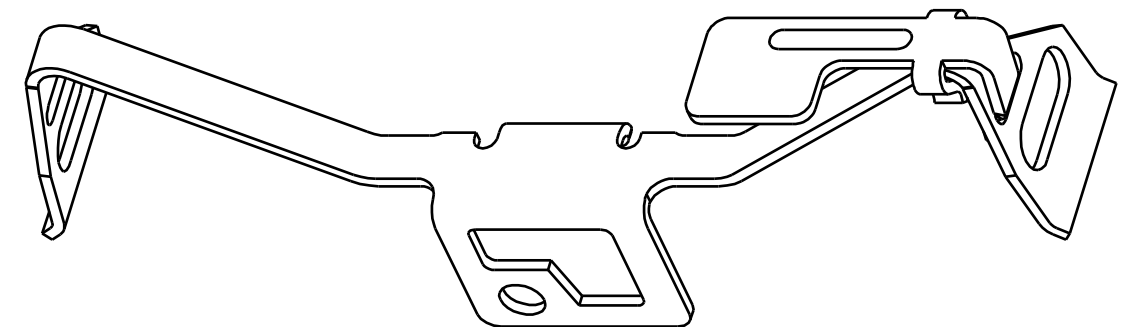
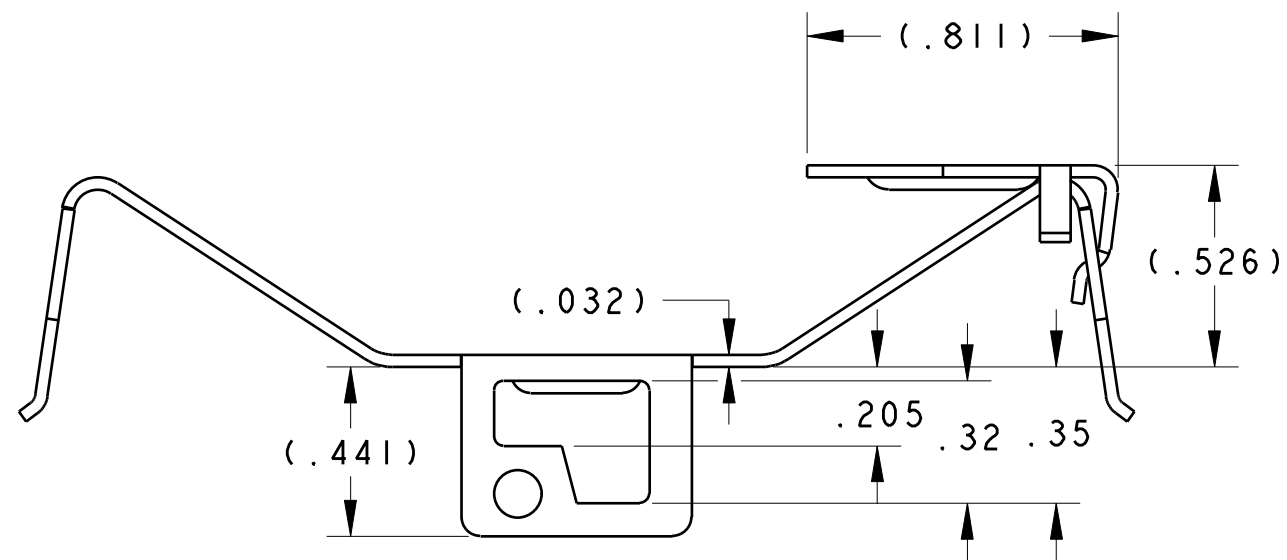




NOTES:

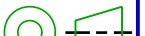
UNLESS OTHERWISE SPECIFIED

1. INTERPRET DRAWING PER ASME Y14.5M-1994.
2. THIS PART IS RoHS COMPLIANT



**CUSTOMER DRAWING**  
SPECIFICATIONS ARE SUBJECT TO CHANGE WITHOUT NOTICE

REV.	REV. INFO
A	RELEASED ERN: 110940 ETAO 8-26-05 APP'D: S.D 8-29-05

DO NOT SCALE	<b>tyco</b> / <i>Electronics</i>		North Attleboro, Massachusetts 02760			CONFIDENTIAL PROPERTY OF TYCO ELECTRONICS. NOT TO BE DISCLOSED TO OTHERS, REPRODUCED OR USED FOR ANY PURPOSES EXCEPT AS AUTHORIZED IN WRITING BY AN AUTHORIZED OFFICIAL OF TYCO. MUST BE RETURNED TO TYCO ON DEMAND, ON COMPLETION OF ORDERS OR OTHER PURPOSES FOR WHICH LENT.		TITLE:  XEON FLIP CHIP SPRING CLIP WITH Q.R.							
	UNLESS OTHERWISE SPECIFIED TOLERANCES ARE:  .XX ± .02 .XXX ± .010 .XXXX ± . ANGLES ± 2°	DRAWN BY:  E.TAO		DATE:  8-26-05						MATERIAL:  STEEL					
		ENGINEER:  S.DELPRETE		DATE:  8-29-05											
		FINISH:  ZINC													
		FILENAME		PROJECT		SYSTEM									
C-2-1542011-8				PRO-E		DIMENSIONS ARE IN: INCHES		SCALE: 2:1		TYCO PART NO.: 2-1542011-8		SHEET 1 of 1			
						THIRD ANGLE PROJECTION				SIZE  B		DWG. NO.: C-2-1542011-8		REV. A	



SIZE  
**B**