



Chipsmall Limited consists of a professional team with an average of over 10 year of expertise in the distribution of electronic components. Based in Hongkong, we have already established firm and mutual-benefit business relationships with customers from,Europe,America and south Asia,supplying obsolete and hard-to-find components to meet their specific needs.

With the principle of “Quality Parts,Customers Priority,Honest Operation,and Considerate Service”,our business mainly focus on the distribution of electronic components. Line cards we deal with include Microchip,ALPS,ROHM,Xilinx,Pulse,ON,Everlight and Freescale. Main products comprise IC,Modules,Potentiometer,IC Socket,Relay,Connector.Our parts cover such applications as commercial,industrial, and automotives areas.

We are looking forward to setting up business relationship with you and hope to provide you with the best service and solution. Let us make a better world for our industry!



## Contact us

Tel: +86-755-8981 8866 Fax: +86-755-8427 6832

Email & Skype: info@chipsmall.com Web: www.chipsmall.com

Address: A1208, Overseas Decoration Building, #122 Zhenhua RD., Futian, Shenzhen, China

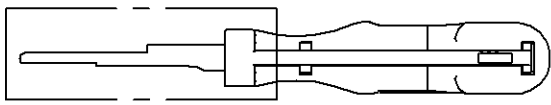
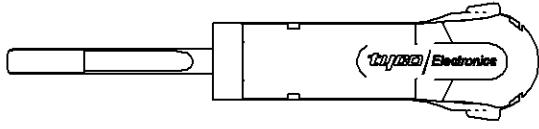


DNIS NO  
C-2-1579008-9

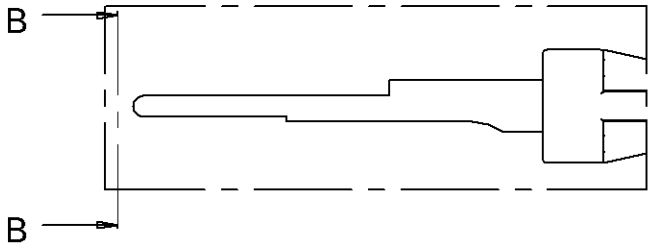
PASSNASS	ABNASS

PROJECT NO. \_\_\_\_\_ USED ON \_\_\_\_\_

THIS DRAWING IS A CONTROLLED DOCUMENT FOR THE MANUFACTURE OF THE PRODUCT AND THE CONTROL AND ENGINEERING DEPARTMENT SHALL BE CONTACTED FOR THE LATEST REVISION.  
  
 DIESES ZEICHNUNG WIRD DURCH AMP INCORPORATED KONTROLLIERT. DIESE ZEICHNUNG LIEFERT NUR FÜR DIE HERSTELLUNG DES PRODUKTS. FÜR DIE LETZTE REVISION SOLLTE MAN SICH AN DIE ABTEILUNG FÜR DIE KONTROLLE UND INGENIEURWESEN WENDEN.



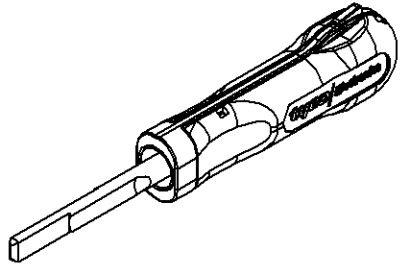
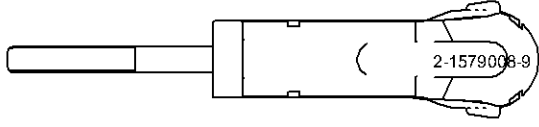
A



A  
2:1



B-B  
2:1



**FOR CONTACTS / HOUSINGS:**

**8 mm MTA**

PREZISANSTÖLTERANZEN NACH DIN 7168 (Werte in mm)  
1) ABWEICHUNG VON DIN 7168 2) LÄNGE DES KONTAKTENSCHWELLS

NENNMASS	0,5	3	6	30	120	400
BEREICH 1) B15	3	6	30	120	400	1000
LÄNGEN	±0,1	±0,2	±0,3	±0,4	±0,5	±0,8
MASS	MITTEL	±0,1	±0,2	±0,3	±0,5	±0,8
RADIEN U. FASEN	±0,2	±0,3	±1	±2	±4	±4
WINKELABWICHN. 1) 2)	±1°	±1°	±30°	±30°	±10°	±5°

GENERAL TOLERANCES ACC. TO DIN 7168 (VALUES IN mm)  
1) DEVIATING FROM DIN 7168 2) LENGTH OF SHORT ANGLE SIDE

LOC	-	-	-	-
AI	-	-	-	-
DIST	-	-	-	-

TEIL (IN BEREICH X... MIT PRÜFSTRICH-NR. <-) VIE. GEZ.),  
REVISION-STATUS UND LÖSUNGSSYMBOL. GEGENWÄRTIG  
PART TO BE MARKED WITH PRÜFSTRICH-NR. <-) AS SHOWN,  
REV. STATUS AND VENDOR'S MARK IN AREA X...

RA	1,6	1,25	0,8	0,4	0,2
RV	0,4	0,3	0,2	0,15	0,1
RVV	0,2	0,15	0,1	0,075	0,05
RVVV	0,1	0,075	0,05	0,03	0,02

ALLE UNKANTIGE KANTEN 0,2x45° ENTGRATEN  
REMOVE BURRS, BREAK SHARP EDGES 0,2x45°

A	ECN EGCO-0000-00	00.00.2000	-	-
P	LTR	REVISION RECORD	DATE	DWN APVD

FINISH	DWN	06.11.2006	MATERIAL		HEAT TREAT
DIMENSIONS	mm				
TOLERANCES UNLESS OTHERWISE SPECIFIED					
h	ISO 8015				
M	ISO 2768				
L	DIN 7160				
0	PLC				
1	PLC				
2	PLC				
3	PLC				
4	PLC				
ANGLES					
SURFACE TEXTURE					

NAME	EXTRACTION TOOL Entriegelungswerkzeug		SCALE	1:1	SIZE	A3	DRAWING NO	C-2-1579008-9	SHEET	1 of 1	REV	A
DWN	m. pearson		CHK		APVD		DATE	06.11.2006	WEIGHT	Gewicht / Weight 0,000kg		
							tyco Electronics		tyco Electronics AMP GmbH D - 64625 Bensheim			

THIS DRAWING IS CONTROLLED AND IS SUBJECT TO THE CONTROL AND ENGINEERING DEPARTMENT. ANY REVISIONS TO THIS DRAWING MUST BE APPROVED BY THE CONTROL AND ENGINEERING DEPARTMENT.  
  
 DIESE ZEICHNUNG WIRD DURCH AMP INCORPORATED KONTROLLIERT. DIESE ZEICHNUNG LIEFERT NUR FÜR DIE HERSTELLUNG DES PRODUKTS. FÜR DIE LETZTE REVISION SOLLTE MAN SICH AN DIE ABTEILUNG FÜR DIE KONTROLLE UND INGENIEURWESEN WENDEN.

D  
  
 C  
  
 B  
  
 A