



Chipsmall Limited consists of a professional team with an average of over 10 year of expertise in the distribution of electronic components. Based in Hongkong, we have already established firm and mutual-benefit business relationships with customers from,Europe,America and south Asia,supplying obsolete and hard-to-find components to meet their specific needs.

With the principle of “Quality Parts,Customers Priority,Honest Operation,and Considerate Service”,our business mainly focus on the distribution of electronic components. Line cards we deal with include Microchip,ALPS,ROHM,Xilinx,Pulse,ON,Everlight and Freescale. Main products comprise IC,Modules,Potentiometer,IC Socket,Relay,Connector.Our parts cover such applications as commercial,industrial, and automotives areas.

We are looking forward to setting up business relationship with you and hope to provide you with the best service and solution. Let us make a better world for our industry!



## Contact us

Tel: +86-755-8981 8866 Fax: +86-755-8427 6832

Email & Skype: info@chipsmall.com Web: www.chipsmall.com

Address: A1208, Overseas Decoration Building, #122 Zhenhua RD., Futian, Shenzhen, China

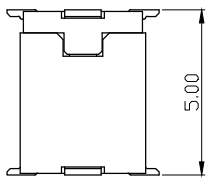
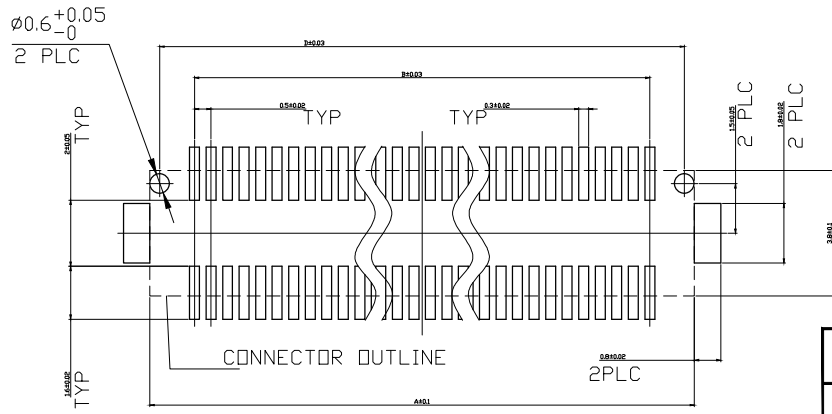
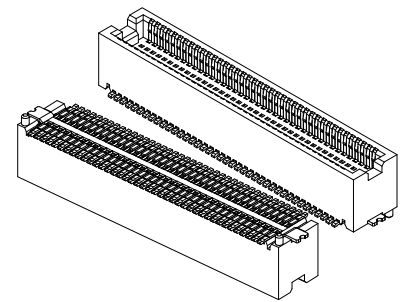
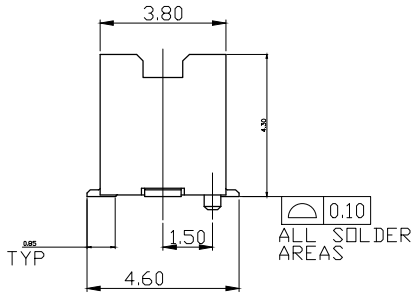
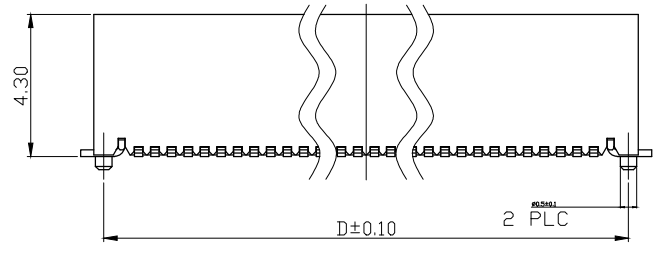
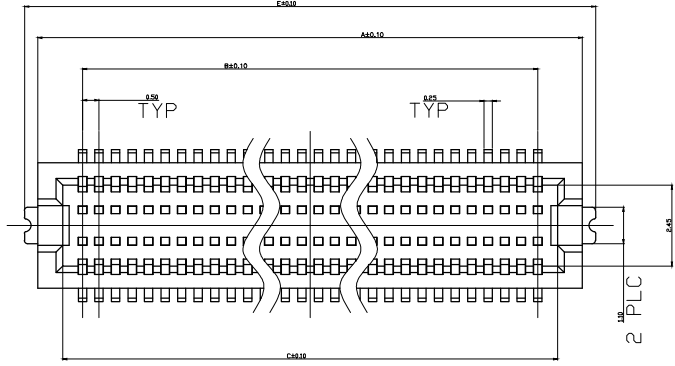


THIS DRAWING IS UNPUBLISHED. RELEASED FOR PUBLICATION AUG. 2006.  
 © COPYRIGHT BY TYCO ELECTRONICS CORPORATION. ALL RIGHTS RESERVED.

LOC	DIST	REVISIONS					
DW	-	P	LTR	DESCRIPTION	DATE	DWN	APVD
		A2		REVISED. (ECR-14-009374)	02OCT14	SW	SC

NOTE:

- MATERIAL:  
 HOUSING: THERMOPLASTIC (LCP) WITH 30% GF, UL 94V-0, BLACK COLOR.  
 CAP: NYLON 9T WITH 33% GF, UL 94V-0, BLACK COLOR.  
 CONTACTS: PHOSPHOR BRONZE.  
 PEGS: BRASS.
- FINISH:  
 CONTACTS: 0.127 μm [5 μ" ] MIN. GOLD PLATED OVER  
 1.27 μm [50 μ" ] MIN. NICKEL ON ENTIRE CONTACT.  
 PEGS: 2.54 μm [100 μ" ] MIN. MATTE-TIN PLATED.
- REFLOW SOLDER CAPABLE TO 260°C AS PER TYCO SPEC. 109-201, CONDITION B.
- NO TYCO LOGO AND DATE CODE ON THE PRODUCT.
- RECEPTACLE PART NUMBERS (BASE NO.#): 1775187 THRU 1775190.



STACKING HEIGHT

EOL	WITHOUT	0.715g	18.00	16.60	15.70	14.50	17.20	60	6-1775184-0
		0.597g	15.50	14.10	13.20	12.00	14.70	50	5-1775184-0
EOL	WITHOUT	0.48g	13.00	11.60	10.70	9.50	12.20	40	4-1775184-0
		0.363g	10.50	9.10	8.20	7.00	9.70	30	3-1775184-0
		0.245g	8.00	6.60	5.70	4.50	7.20	20	2-1775184-0
CAP. FR PICK/PLACE	WEIGHT	E D C B A			DIMENSIONS			NO. OF CONTACTS	PART NUMBER

THIS DRAWING IS A CONTROLLED DOCUMENT.		DWN H. HUANG 31AUG2007		
		CHK S. HOU 31AUG2007		
		APVD W.J. KE 31AUG2007	NAME	
DIMENSIONS: MM		PRODUCT SPEC 108-57578	BOARD TO BOARD CONNECTOR, 0.5 MM PITCH, FINE-MATE, PLUG, 5H, WITH BOSSES & PEG & CAP	
TOLERANCES UNLESS OTHERWISE SPECIFIED:		QUALIFICATION TEST REPORT 501-57669	SIZE A3	CAGE CODE 00779
2 PLC		WEIGHT SEE TABLE	DRAWING NO C-1775184	RESTRICTED TO -
MATERIAL SEE NOTE		CUSTOMER DRAWING	SCALE -	SHEET 1 of 3
FINISH SEE NOTE				REV A2

4

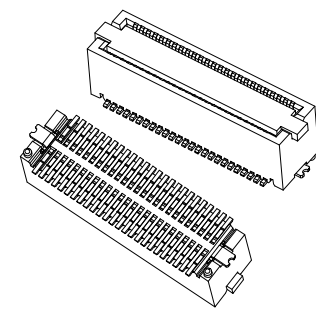
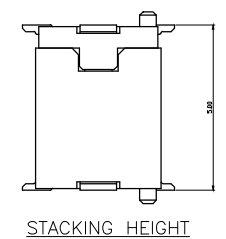
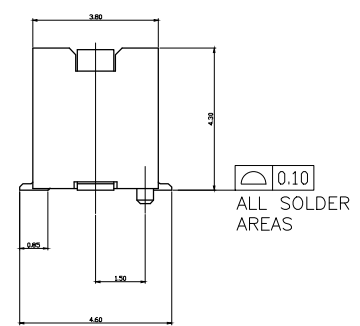
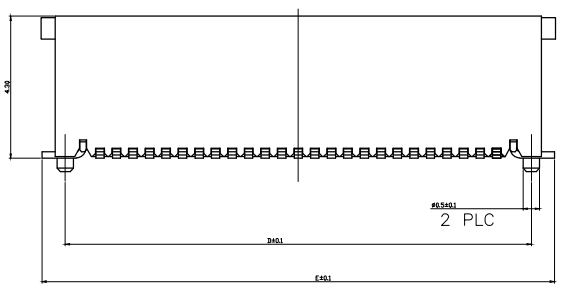
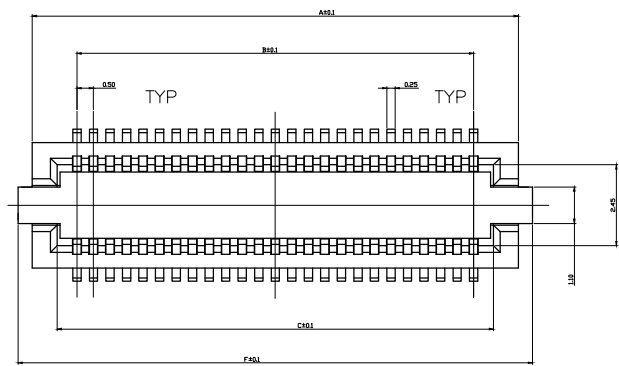
3

2

1

THIS DRAWING IS UNPUBLISHED. RELEASED FOR PUBLICATION  
 COPYRIGHT BY TYCO ELECTRONICS CORPORATION. ALL RIGHTS RESERVED.

LOC	DIST	REVISIONS			
P	LTR	DESCRIPTION	DATE	DWN	APVD
DW	—	SEE SHEET 1			



WITH	0.6g	15.56	15.50	14.10	13.20	12.00	14.70	50	5-1775184-1					
CAP FOR PICK/PLACE	WEIGHT	DIMENSIONS					F	E	D	C	B	A	NO. OF CONTACTS	PART NUMBER

THIS DRAWING IS A CONTROLLED DOCUMENT.		DWN H. HUANG 31AUG2007														
DIMENSIONS: MM		CHK S. HOU 31AUG2007														
TOLERANCES UNLESS OTHERWISE SPECIFIED:		APVD W.J. KE 31AUG2007	NAME BOARD TO BOARD CONNECTOR, 0.5 MM PITCH, FINE-MATE, PLUG, 5H, WITH BOSSES & PEG & CAP													
<table border="1"> <tr><td>0 PLC</td><td>± 0.50</td></tr> <tr><td>1 PLC</td><td>± 0.38</td></tr> <tr><td>2 PLC</td><td>± 0.25</td></tr> <tr><td>3 PLC</td><td>± 0.15</td></tr> <tr><td>4. PLC ANGLES</td><td>± 5°</td></tr> </table>		0 PLC	± 0.50	1 PLC	± 0.38	2 PLC	± 0.25	3 PLC	± 0.15	4. PLC ANGLES	± 5°	PRODUCT SPEC —	SIZE A3	CAGE CODE 00779	DRAWING NO C-1775184	RESTRICTED TO —
0 PLC	± 0.50															
1 PLC	± 0.38															
2 PLC	± 0.25															
3 PLC	± 0.15															
4. PLC ANGLES	± 5°															
MATERIAL SEE NOTE	FINISH SEE NOTE	QUALIFICATION TEST REPORT —	WEIGHT SEE TABLE	SCALE —	SHEET 2 of 3	REV A2										
		CUSTOMER DRAWING														

