



Chipsmall Limited consists of a professional team with an average of over 10 year of expertise in the distribution of electronic components. Based in Hongkong, we have already established firm and mutual-benefit business relationships with customers from,Europe,America and south Asia,supplying obsolete and hard-to-find components to meet their specific needs.

With the principle of “Quality Parts,Customers Priority,Honest Operation,and Considerate Service”,our business mainly focus on the distribution of electronic components. Line cards we deal with include Microchip,ALPS,ROHM,Xilinx,Pulse,ON,Everlight and Freescale. Main products comprise IC,Modules,Potentiometer,IC Socket,Relay,Connector.Our parts cover such applications as commercial,industrial, and automotives areas.

We are looking forward to setting up business relationship with you and hope to provide you with the best service and solution. Let us make a better world for our industry!



## Contact us

Tel: +86-755-8981 8866 Fax: +86-755-8427 6832

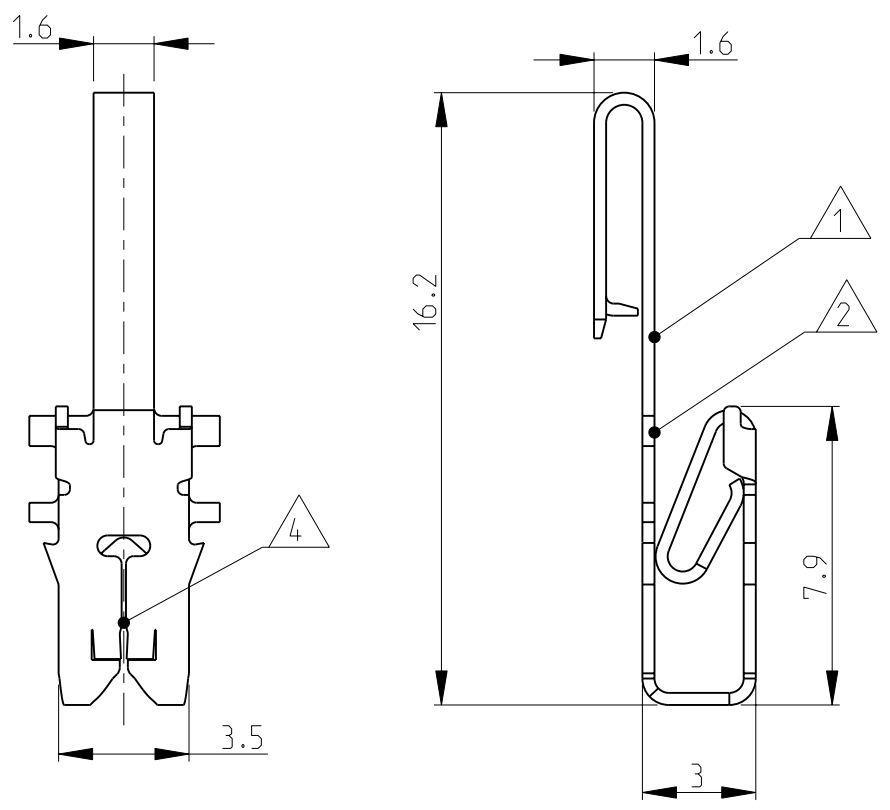
Email & Skype: info@chipsmall.com Web: www.chipsmall.com

Address: A1208, Overseas Decoration Building, #122 Zhenhua RD., Futian, Shenzhen, China

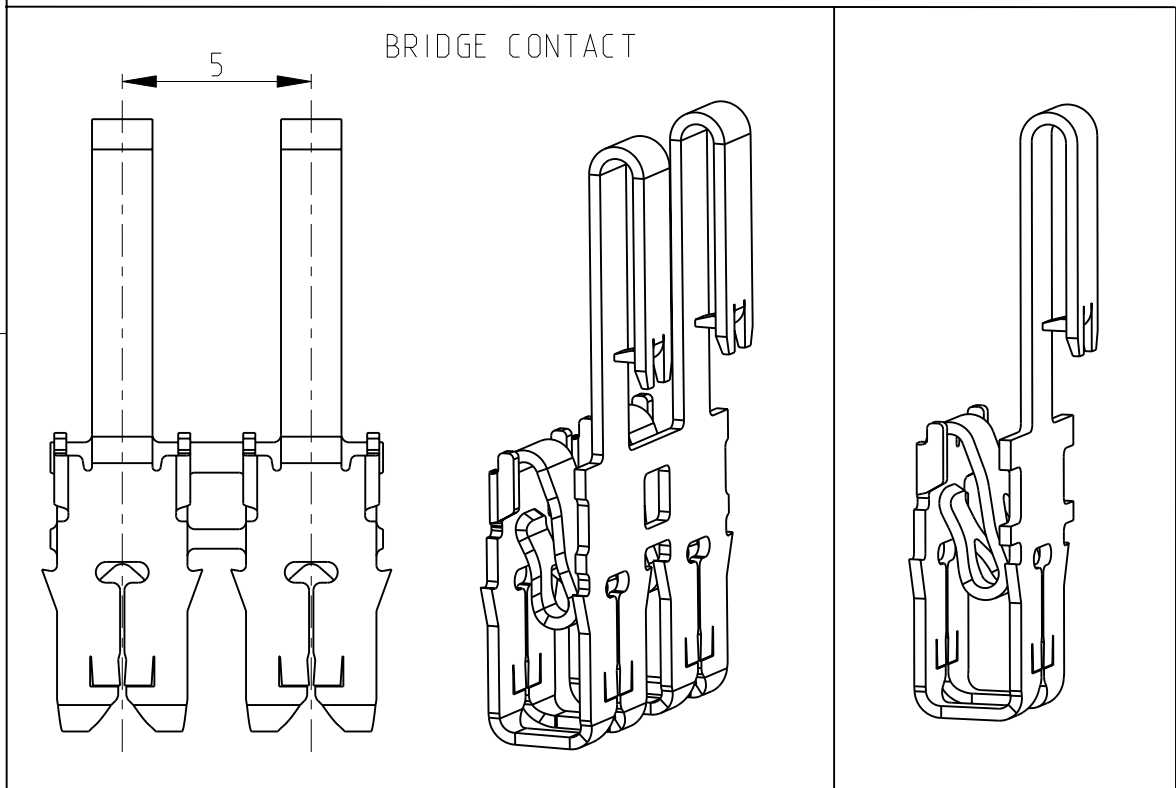
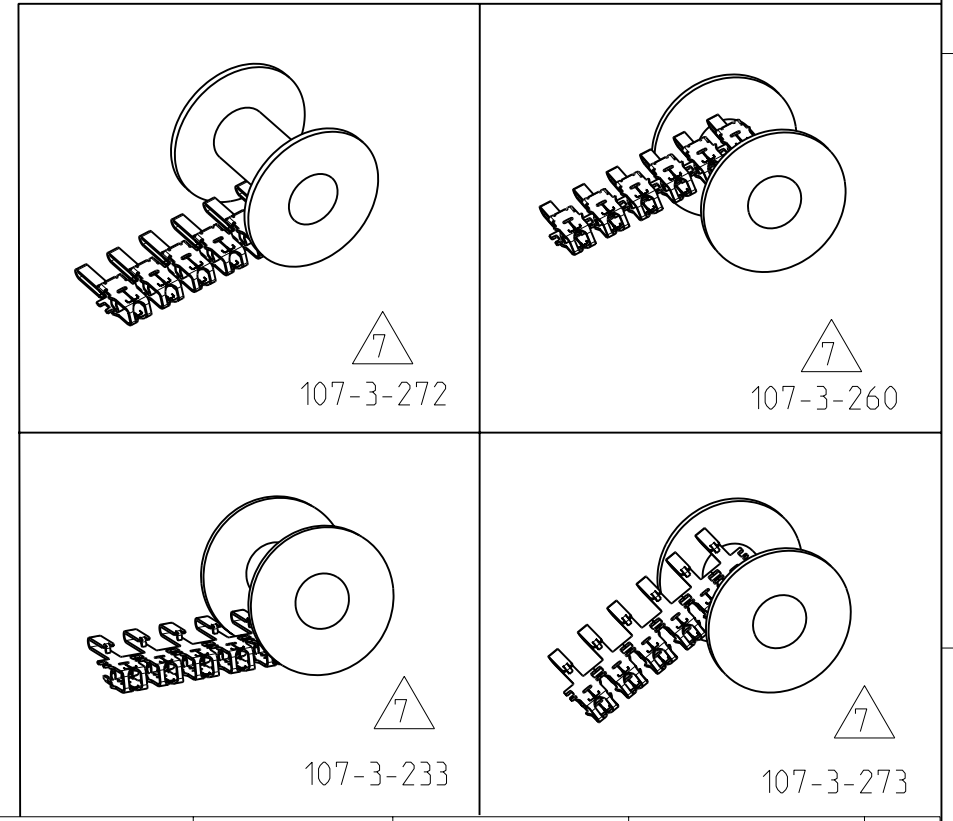


THIS DRAWING IS UNPUBLISHED. RELEASED FOR PUBLICATION  
 © COPYRIGHT 20 ALL RIGHTS RESERVED.

LOC	DIST	REVISIONS					
		P	LTR	DESCRIPTION	DATE	DWN	APVD
A1	-		C2	2-1987143-3 ADDED	30SEP2008	DZ	HB
			D1	TABLE MODIF. AND DRW ADEP. TO PROD.DRW	16DEZ2008	DZ	SZA
			D2	NOTE 3 UPDATED	11SEP2009	PKS	RRP
			D3	ECR-10-026537	08AUG11	KK	HMR



- 8. Zwei Draehete gleichen Durchmessers  
TWO WIRES OF SAME DIAMETER
- 7. Reeling Richtung  
REELING DIRECTION
- 6. Materialdicke 0.32±0.02  
STOCK THICKNESS 0.32±0.02
- 5. Werkzeugvorschub : 5mm  
DIE FEED : 5mm
- 4. Schlitz geeignet fuer Kupferlackdraht  
einfach oder doppelt (gemaeß Tabelle)  
SLOT ACCEPTS: SINGLE OR DOUBLE MAGNET WIRE  
(SEE TABLE FOR SIZE)
- 3. Kontaktkammer nach  
Zeichnung Nr.411-18517  
CONTACT CAVITY ACCORDING  
DRAWING No. 411-18517
- 2. TE Markenzeichen  
TE TRADEMARK
- 1. Kennziffer fuer Lackdrahtbereich  
IDENTIFICATION NO. FOR MAGNET WIRE RANGE



4	0.180 to 0.265	0.180 to 0.265	107-3-233	CuNiSi	Pre-tin	6-1987143-2	D		
				7 CuZn	BLANK	6-1987143-1	D		
				107-3-272	2-1987143-1	posttinned 2-6 µm. Spec.112-16-3	OBSOLETE	<del>2-1987143-3</del>	D
						Pre-tin	2-1987143-2	D	
						BLANK	2-1987143-1	D	
					7 CuZn	Pre-tin	OBSOLETE	<del>4-1987143-2</del>	D
	BLANK	1-1987143-1	D						
D. MARK	DOUBLE W. WIRE RANGE	SINGLE W. WIRE RANGE	REELING	MATERIAL	PRODUCED FROM	FINISH	PART NO	Par. Rev.	

THIS DRAWING IS A CONTROLLED DOCUMENT.		DWN Praveen K 16-May-07
DIMENSIONS: mm		CHK M. Boeffert 10-July-07
TOLERANCES UNLESS OTHERWISE SPECIFIED:		APVD T. Gerlach 10-July-07
0 PLC ±-	} ±0.2	PRODUCT SPEC -
1 PLC ±-		APPLICATION SPEC -
2 PLC ±-		WEIGHT -
3 PLC ±-		
4 PLC ±-		
ANGLES ±-		
MATERIAL SEE TABLE	FINISH SEE TABLE	

**STE** TE Connectivity

NAME: MAG-MATE EDGE-LEAF CONTACT

SIZE	CAGE CODE	DRAWING NO	RESTRICTED TO
A3	00779	©-1987143	-

CUSTOMER DRAWING SCALE 1:1 SHEET 1 OF 1 REV D3