



Chipsmall Limited consists of a professional team with an average of over 10 year of expertise in the distribution of electronic components. Based in Hongkong, we have already established firm and mutual-benefit business relationships with customers from,Europe,America and south Asia,supplying obsolete and hard-to-find components to meet their specific needs.

With the principle of “Quality Parts,Customers Priority,Honest Operation,and Considerate Service”,our business mainly focus on the distribution of electronic components. Line cards we deal with include Microchip,ALPS,ROHM,Xilinx,Pulse,ON,Everlight and Freescale. Main products comprise IC,Modules,Potentiometer,IC Socket,Relay,Connector.Our parts cover such applications as commercial,industrial, and automotives areas.

We are looking forward to setting up business relationship with you and hope to provide you with the best service and solution. Let us make a better world for our industry!



## Contact us

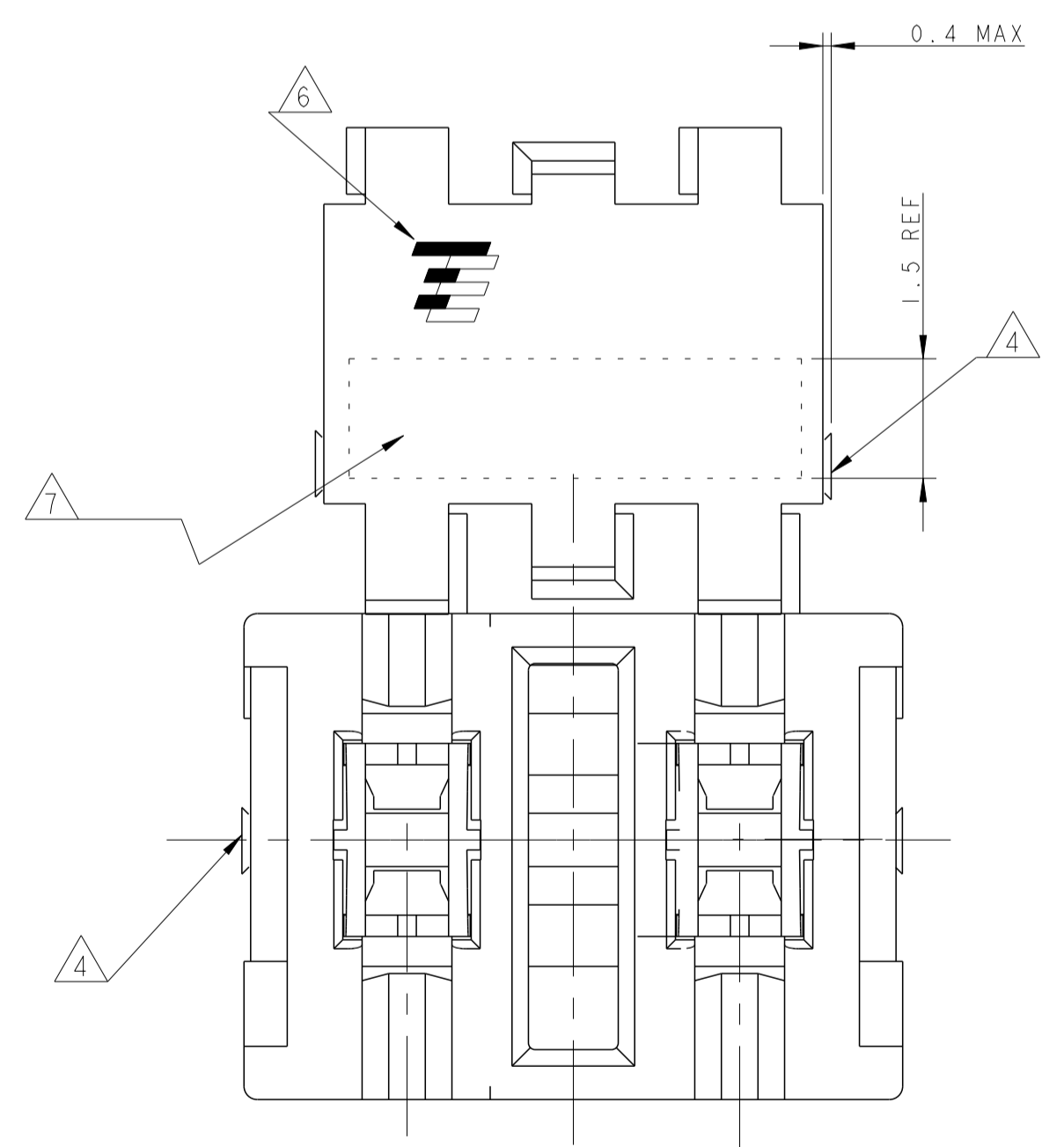
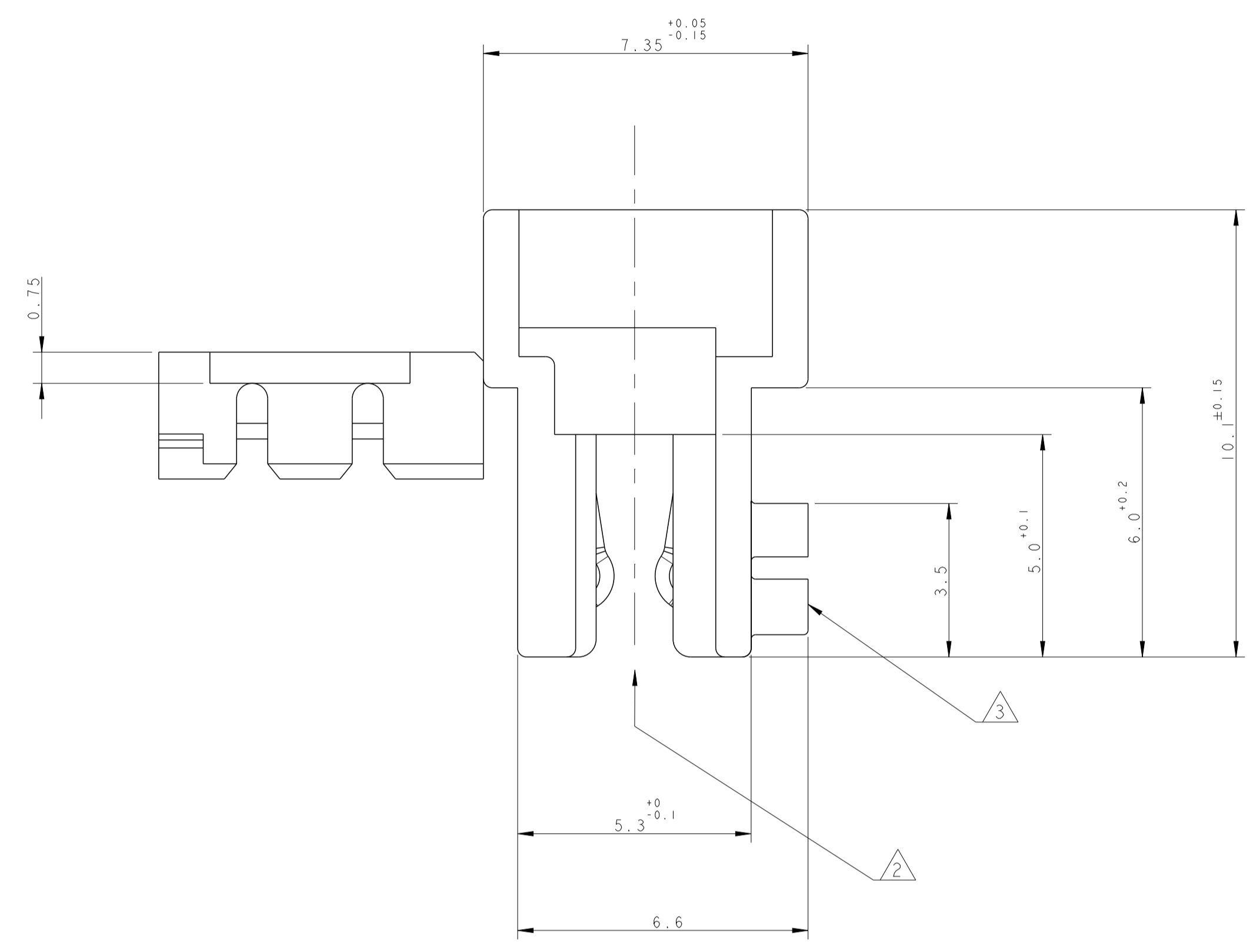
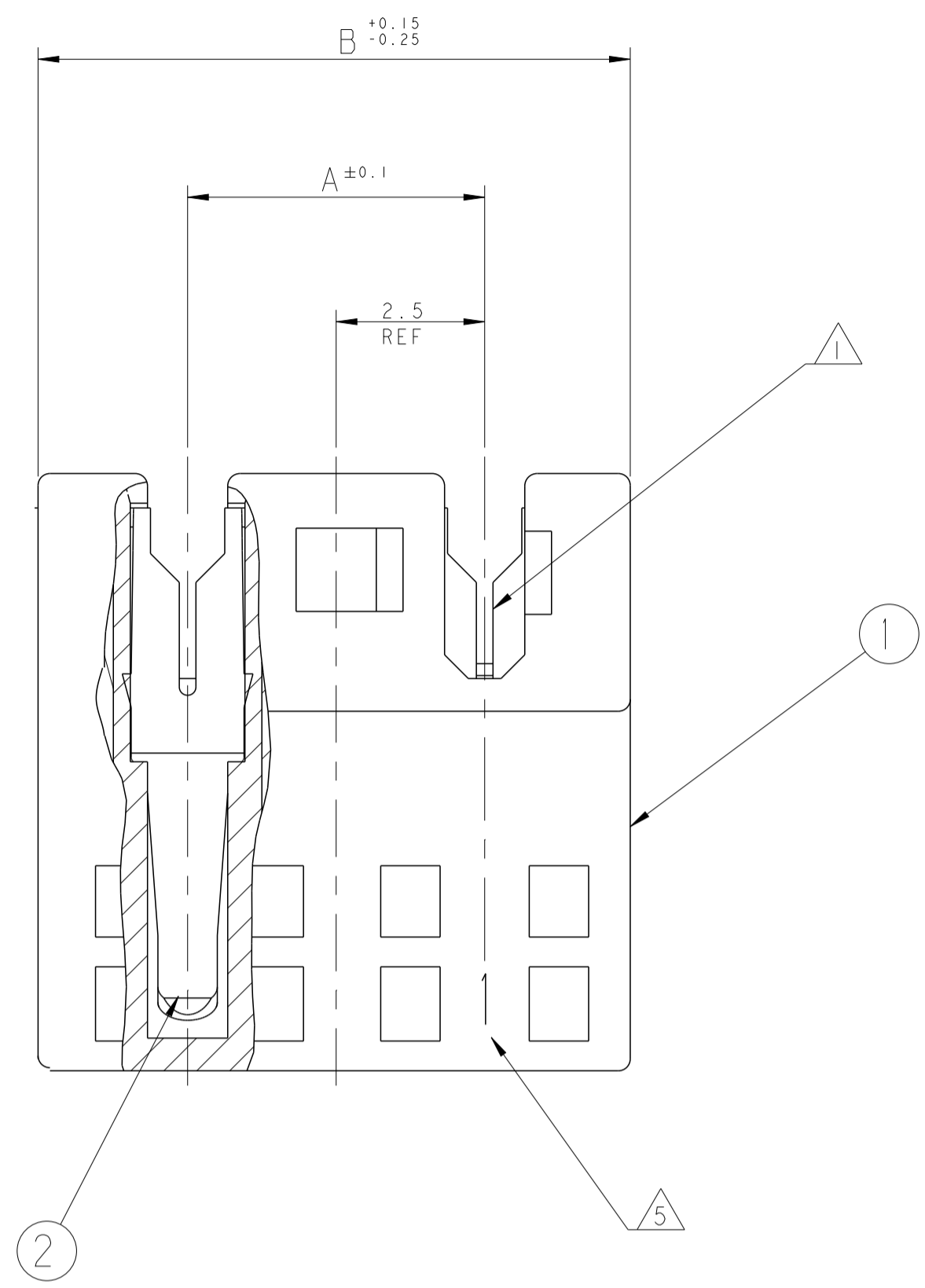
Tel: +86-755-8981 8866 Fax: +86-755-8427 6832

Email & Skype: info@chipsmall.com Web: www.chipsmall.com

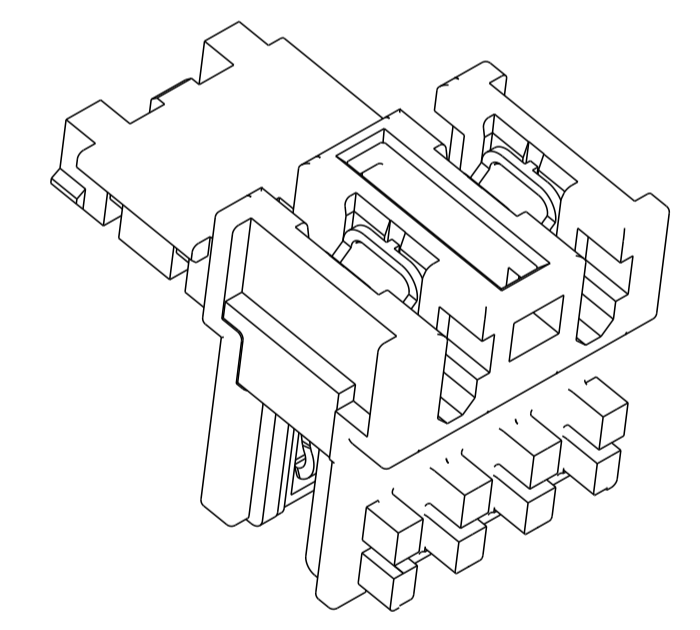
Address: A1208, Overseas Decoration Building, #122 Zhenhua RD., Futian, Shenzhen, China



REVISIONS				
P.	LTN	DESCRIPTION	DATE	APVD
B4		REVISED PER ECR-15-012073	13AUG2015	NK WW
B5		ECR-16-016334	18NOV2016	FV RR



ISO VIEW



- ① WIRE RANGE : STRANDED 0.22-0.35 mm (INS. DIA. 1.30±0.1)
- ② MATING PART: TAB HEADER P/N 829866;  
PCB FRAME P/N 964575 (PCB THK 1.5±0.14 COPPER CLADDING INCLUDED)  
SEE PRODUCT SPEC. 108-18056 FOR FRAME APPLICATION
- ③ KEYING RIBS TO BE REMOVED BY TERMINATION MACHINE
- ④ CUT OFF DIMENSION DUE TO PRODUCTION PROCESS
- ⑤ CIRCUIT No. IDENTIFICATION
- ⑥ TE TRADEMARK (OPTIONAL POSITION)
- ⑦ TAMPOGRAPHIC COLOUR CODE AREA  
(P/Ns IDENTIFICATION BEFORE CRIMPING)
- ⑧ CAVITIES 1 AND 3 LOADED WITH CONTACT
- ⑨ PBT GF
- ⑩ PBT GF, GWEPT 750 NO-FLAME, NATURAL

COLOUR CODE	HSG POS.	DIM. A	DIM. B	TE P/N	TE P/N
BLUE				3-284970-3	3-2311509-3
GREEN				2-284970-3	2-2311509-3
BROWN	3	5.0	9.9	1-284970-3	1-2311509-3
-				0-284970-3	2311509-3

Q.TY	MATERIAL	DESCRIPTION	ITEM
SEE TABLE	PH. BRONZE, TIN PLATED	IDC RECEPTACLE CONTACT	2
SEE TABLE	PBT GLASS FIBER FILLED	FEMALE HOUSING	1

THIS DRAWING IS A CONTROLLED DOCUMENT.		DWN R. FABRIS 17 MAY 05	TE Connectivity NAME: DUOPLUG 2.5 FEMALE CONNECTOR STANDARD VERSION, 2 POS. (HIGHER COVER RETENTION)
DIMENSIONS: mm		CHK -	
TOLERANCES UNLESS OTHERWISE SPECIFIED:		APVD G. TURCO 17 MAY 05	PRODUCT SPEC: 108-18056 APPLICATION SPEC: 114-18049-1 WEIGHT: - CUSTOMER DRAWING
0 PLC ±0.2 1 PLC ±0.2 2 PLC ±0.2 3 PLC ± 4 PLC ± ANGLES ±1°		FINISH: -	
REVISIONE DELL'ASSEMBLATO (REVISION OF EACH ASSY NO)		SIZE: CAGE CODE DRAWING NO: A100779C=284970	RESTRICTED TO: -
ELENCO DEI COMPONENTI (PARTS LIST)		SCALE: 5:1	SHEET 1 OF 1 REV B6