



Chipsmall Limited consists of a professional team with an average of over 10 year of expertise in the distribution of electronic components. Based in Hongkong, we have already established firm and mutual-benefit business relationships with customers from,Europe,America and south Asia,supplying obsolete and hard-to-find components to meet their specific needs.

With the principle of “Quality Parts,Customers Priority,Honest Operation,and Considerate Service”,our business mainly focus on the distribution of electronic components. Line cards we deal with include Microchip,ALPS,ROHM,Xilinx,Pulse,ON,Everlight and Freescale. Main products comprise IC,Modules,Potentiometer,IC Socket,Relay,Connector.Our parts cover such applications as commercial,industrial, and automotives areas.

We are looking forward to setting up business relationship with you and hope to provide you with the best service and solution. Let us make a better world for our industry!



Contact us

Tel: +86-755-8981 8866 Fax: +86-755-8427 6832

Email & Skype: info@chipsmall.com Web: www.chipsmall.com

Address: A1208, Overseas Decoration Building, #122 Zhenhua RD., Futian, Shenzhen, China



4

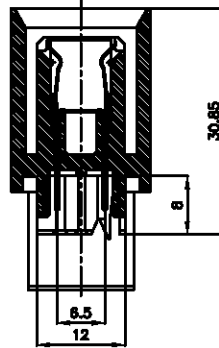
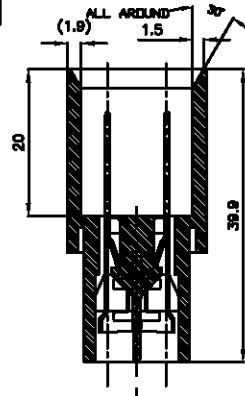
3

2

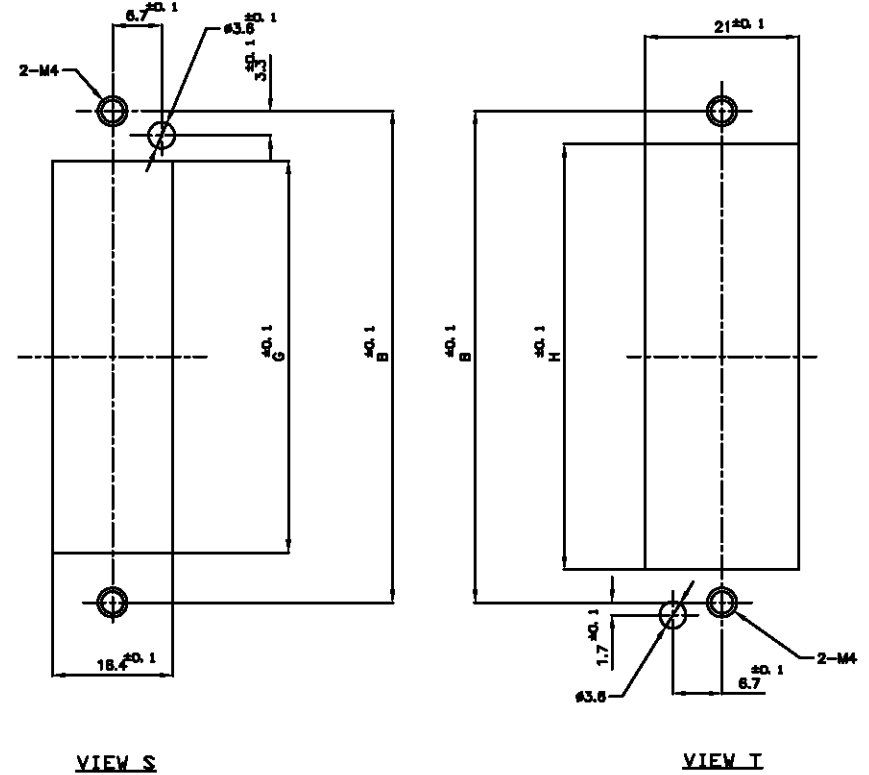
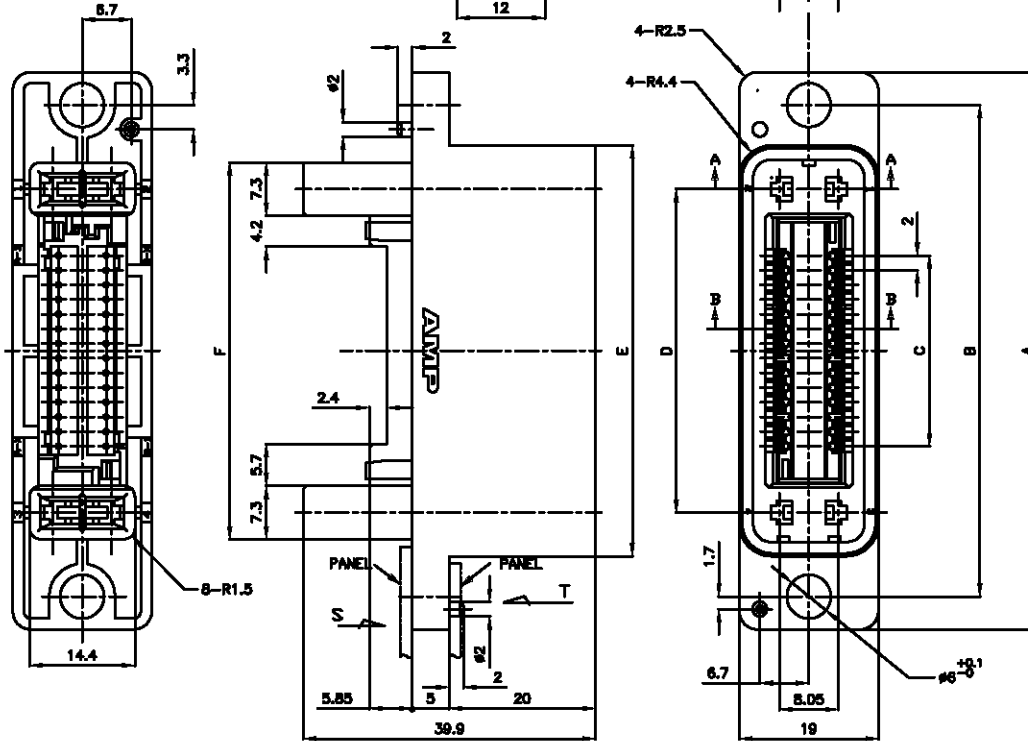
1

THIS DRAWING IS UNCLASSIFIED
DATE 10/20/99 BY 1000/BAR/DAK/KRMPREPARED FOR PRODUCTION
BY TYPE ELECTRONICS CORPORATION. ALL RIGHTS RESERVED.

REVISED				DATE	BY	APP'D
DESCRIPTION		SIZE	REV	H.H. I.E.		
A		REVISED	FB00-0217-04	180E004		

SIGNAL SECTION
SECTION B-BPOWER SECTION
SECTION A-A

PANEL CUT DIMENSIONS



NOTES

- MATERIAL
HOUSING THERMO PLASTIC
CONTACTS COPPER ALLOY
- CONTACT FINISH
MATING SIDE NICKEL PL. ALL OVER GOLD PL.
CT MATING SIDE NICKEL PL. ALL OVER MATTE TIN PL.
- APPLIED POWER CONTACT P/N

FINISH	ANG	STRIP	LOOSE PIECE
GOLD	Ø16-Ø20	179321-3	
PL.	Ø20-Ø24	179322-3	
TIN	Ø16-Ø20	1-179321-2	
PL.	Ø20-Ø24	1-179322-2	

- △ P: NUMBER OF POWER CONTACT (UNLOADED)
S: NUMBER OF SIGNAL CONTACT (PRELOADED)

2-	1-	2-	58	53.4	51.4	56	44.1	26	67	76	4-28	2-
2-173133-0	1-173977-0	2-292185-0	50	43.4	43.4	48	36.1	18	59	68	4-20	2-292181-0
APPLIED CT	APPLIED CT	MATING	H	G	F	E	D	C	B	A	PDS	P/N
P/N	P/N	COUNTER								(P-S)		

THIS DRAWING IS A CONTROLLED DOCUMENT.

DATE	11/10/00	BY	J. L. LANG	OFFICE	
DATE	05/10/00	BY	S. YAO	OFFICE	
DATE	08/18/99	BY	T. SASAKI	OFFICE	
DATE	08/18/99	BY		OFFICE	
DATE	11/14/01	BY		OFFICE	
DATE	11/14/01	BY		OFFICE	

108-60022
APPLICATION SPEC.
114-5112
114-5238

SEE NOTE

SEE NOTE

Type Electronics Corporation Shanghai, P.R.China, 200233	
HYBRID MINI DRAWER CONN. PLUG ASS'Y	
DATE	11/10/00
ISSUE NO.	00779
DRWG NO.	292181
SCALE	2:1
SHEET	1 of 1
REV	A