



Chipsmall Limited consists of a professional team with an average of over 10 year of expertise in the distribution of electronic components. Based in Hongkong, we have already established firm and mutual-benefit business relationships with customers from,Europe,America and south Asia,supplying obsolete and hard-to-find components to meet their specific needs.

With the principle of “Quality Parts,Customers Priority,Honest Operation,and Considerate Service”,our business mainly focus on the distribution of electronic components. Line cards we deal with include Microchip,ALPS,ROHM,Xilinx,Pulse,ON,Everlight and Freescale. Main products comprise IC,Modules,Potentiometer,IC Socket,Relay,Connector.Our parts cover such applications as commercial,industrial, and automotives areas.

We are looking forward to setting up business relationship with you and hope to provide you with the best service and solution. Let us make a better world for our industry!



Contact us

Tel: +86-755-8981 8866 Fax: +86-755-8427 6832

Email & Skype: info@chipsmall.com Web: www.chipsmall.com

Address: A1208, Overseas Decoration Building, #122 Zhenhua RD., Futian, Shenzhen, China



4

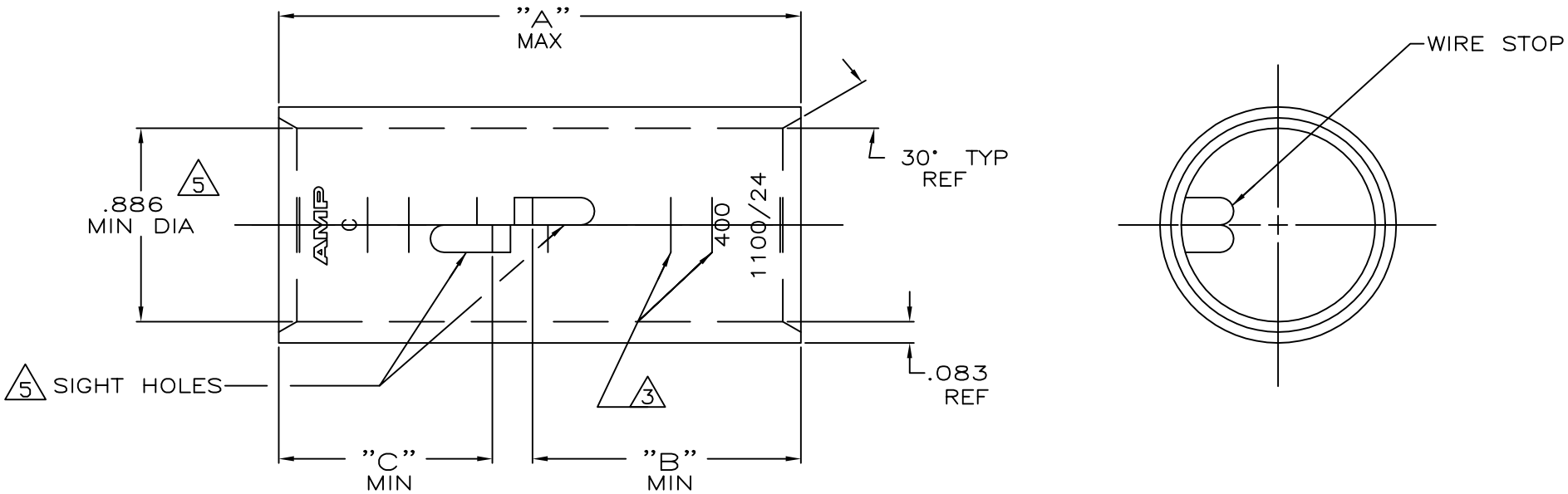
3

2

1

THIS DRAWING IS UNPUBLISHED. RELEASED FOR PUBLICATION
© COPYRIGHT - By - ALL RIGHTS RESERVED.

LOC	DIST	REVISIONS					
G	86	P	LTR	DESCRIPTION	DATE	DWN	APVD
		U		ECR-13-000998	11FEB2013	PK	HS



- ① TIN PL .000150 MIN THK PER ASTM B-545
- ② PART NO: 324465; .180 LB.
PART NO: 1-324465-0; .180 LB.
PART NO: 2-324465-5; .200 LB.

- ③ CRIMP LOCATION MARKS ON PART NO. 2-324465-5 ONLY.
- ④ CLEANED, UNPLATED
- ⑤ .045 MAX BURR ALLOWED INSIDE THE WIRE BARREL ID IN AREA OF SIGHT HOLE.

.97	1.22	2.45	④ ⑤	375-450	COPPER	2-324465-5
.97	.97	2.20	④	MCM	ASTM-B-75	1-324465-0
			④		ANNEALED	324465
"C"	"B"	"A"	FINISH	WIRE RANGE	MATERIAL	PART No

THIS DRAWING IS A CONTROLLED DOCUMENT.

DWN	DK SCHRUM	4/24/89		TE Connectivity SPLICE, BUTT, AMPPOWER WIRE SIZE:400 MCM		
CHK	MS FEHER	4/24/89				
APVD	WJ VOCKROTH	11/8/89				
NAME						
DIMENSIONS:	TOLERANCES UNLESS OTHERWISE SPECIFIED:					
INCHES	0 PLC ± -					
	1 PLC ± -					
	2 PLC ± -					
	3 PLC ± -					
	4 PLC ± -					
	ANGLES ± -					
MATERIAL	FINISH	WEIGHT	SIZE	CAGE CODE	DRAWING NO	RESTRICTED TO
SEE TABLE	SEE TABLE	②	A3	00779	C=324465	-
CUSTOMER DRAWING			SCALE	SHEET	REV	
			2:1	1 OF 1	U	