



Chipsmall Limited consists of a professional team with an average of over 10 year of expertise in the distribution of electronic components. Based in Hongkong, we have already established firm and mutual-benefit business relationships with customers from,Europe,America and south Asia,supplying obsolete and hard-to-find components to meet their specific needs.

With the principle of “Quality Parts,Customers Priority,Honest Operation,and Considerate Service”,our business mainly focus on the distribution of electronic components. Line cards we deal with include Microchip,ALPS,ROHM,Xilinx,Pulse,ON,Everlight and Freescale. Main products comprise IC,Modules,Potentiometer,IC Socket,Relay,Connector.Our parts cover such applications as commercial,industrial, and automotives areas.

We are looking forward to setting up business relationship with you and hope to provide you with the best service and solution. Let us make a better world for our industry!



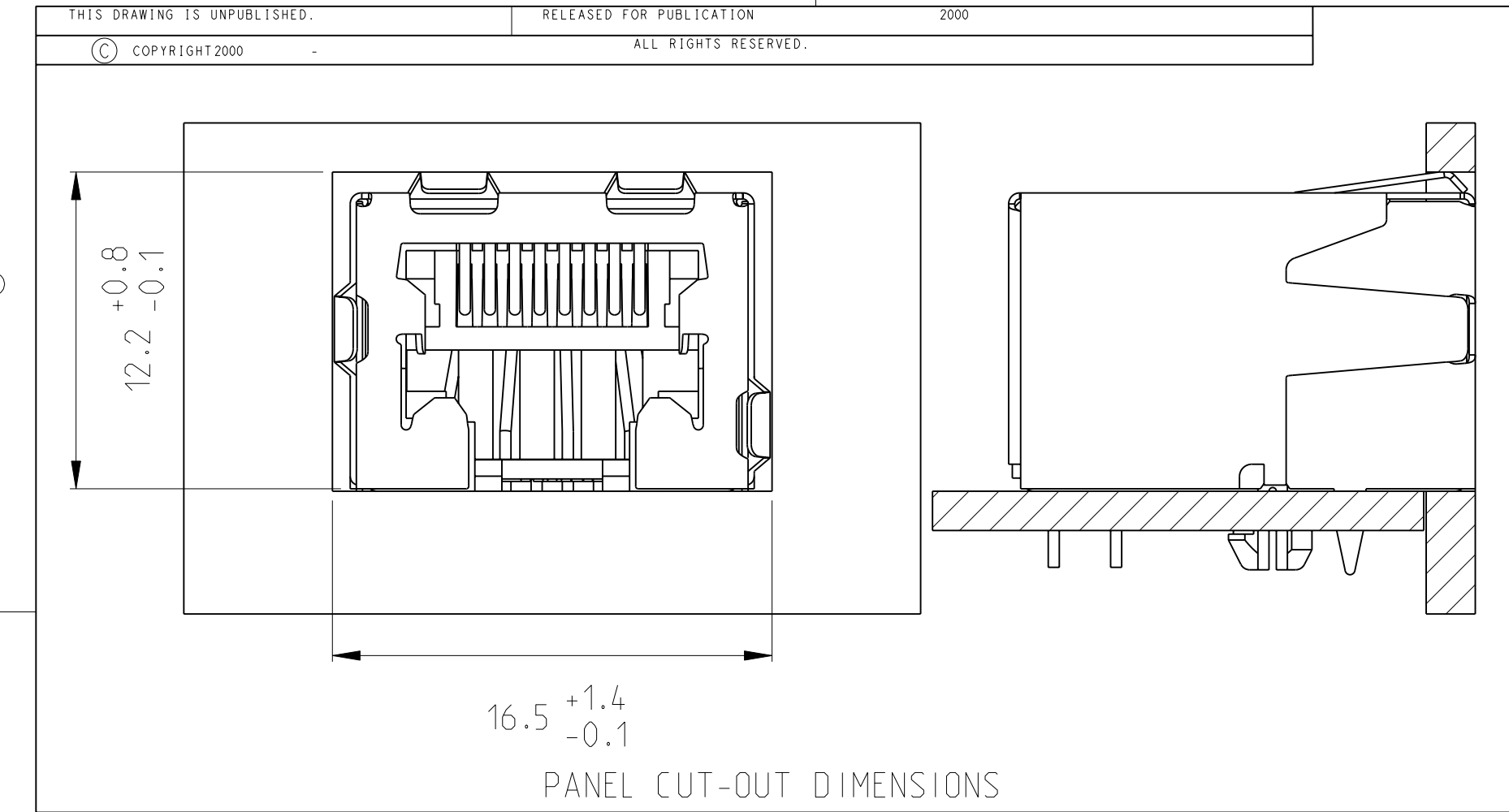
Contact us

Tel: +86-755-8981 8866 Fax: +86-755-8427 6832

Email & Skype: info@chipsmall.com Web: www.chipsmall.com

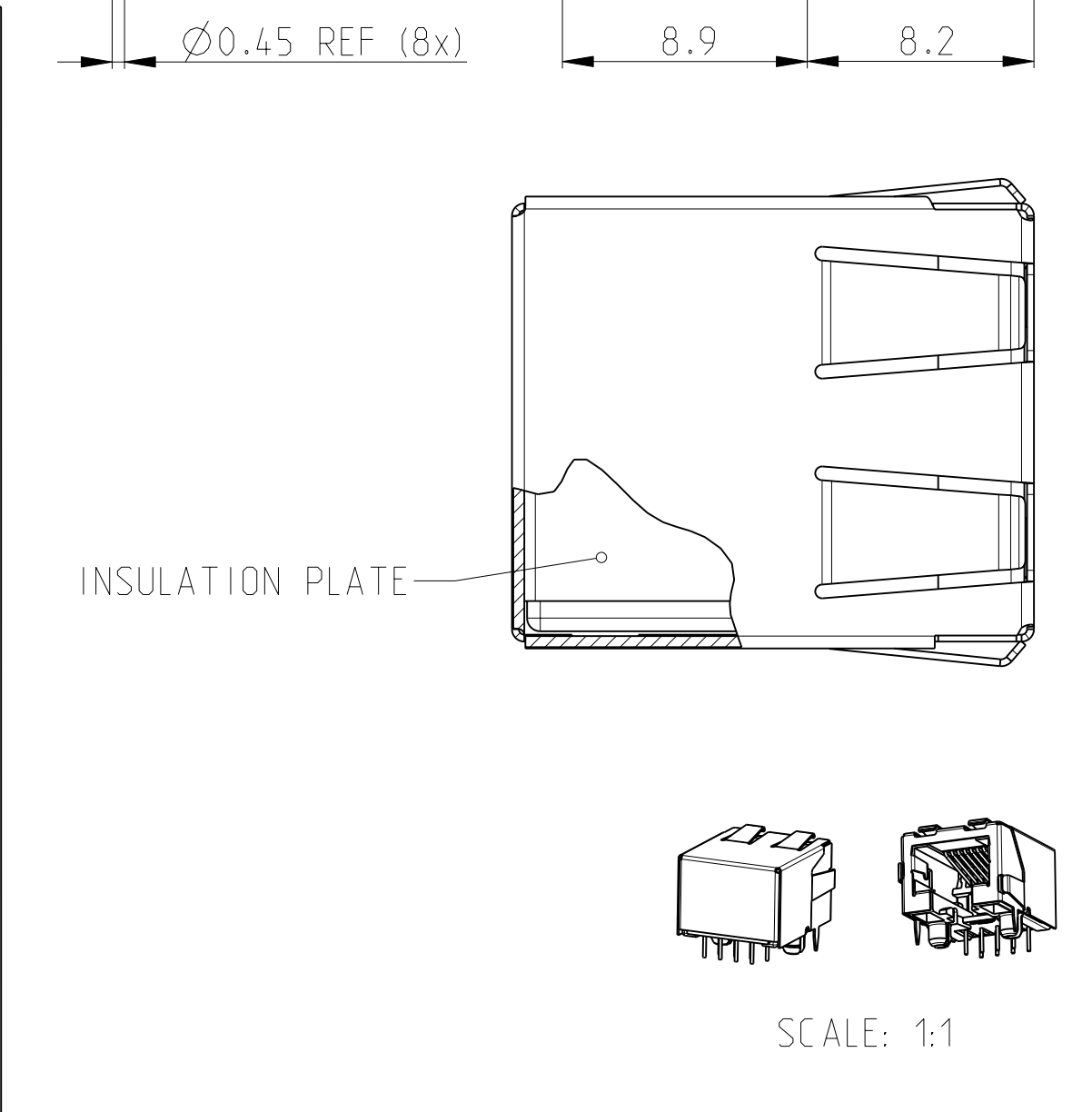
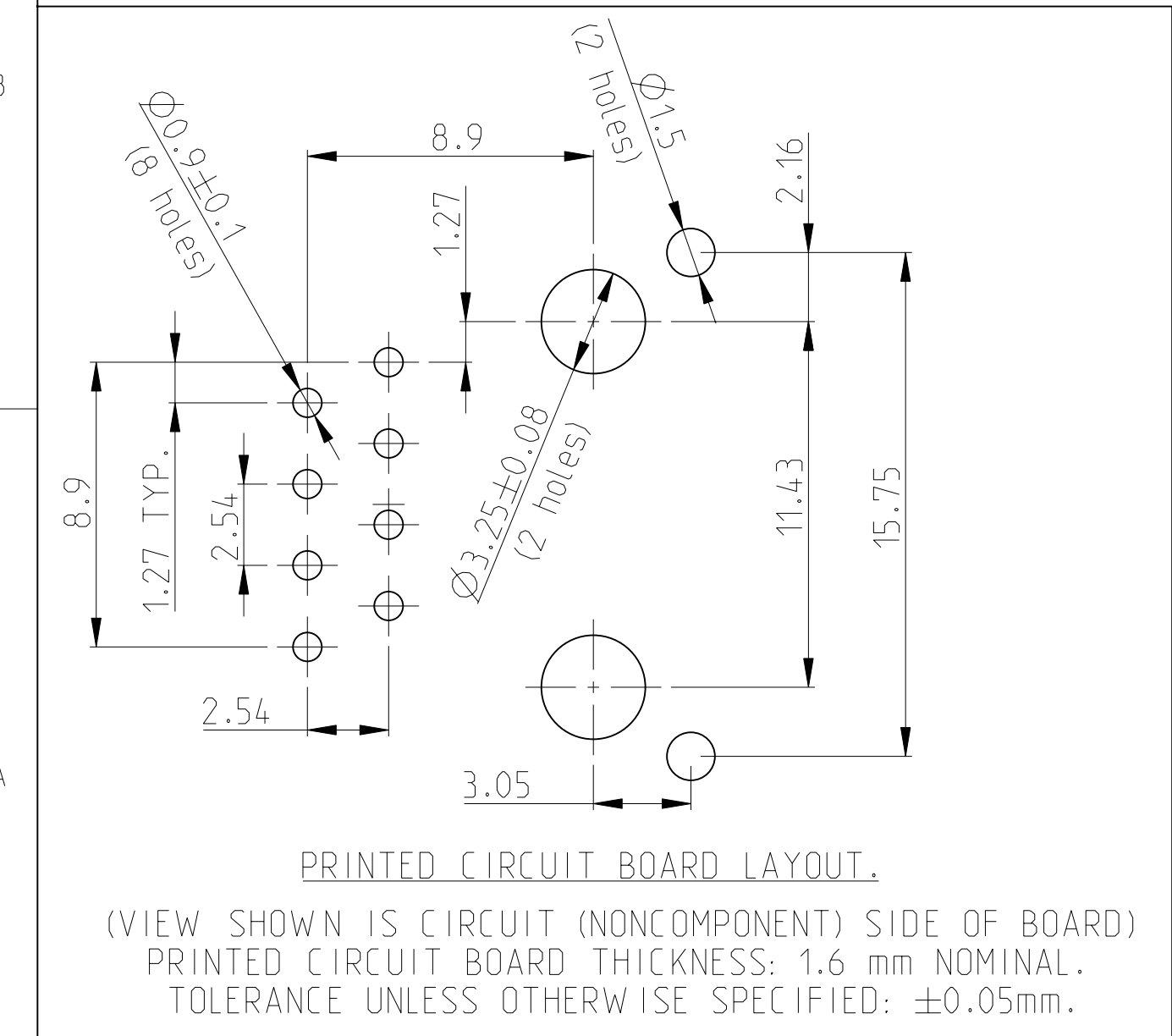
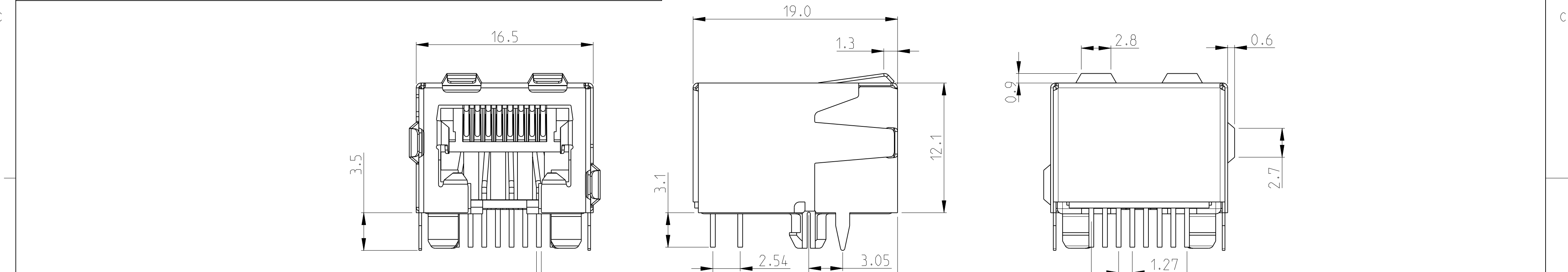
Address: A1208, Overseas Decoration Building, #122 Zhenhua RD., Futian, Shenzhen, China


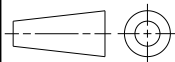




A technical drawing of a rectangular container, possibly a shield or a housing, shown in a top-down view. The container has a central component labeled 'AMP' with a series of vertical lines indicating a stack or a series of elements. On the left side, there are several small, pointed components. A vertical dimension line on the right side indicates a height of 11.43 units. The drawing is a line art representation with no shading.

LOC	DIST	REVISIONS					
		P	LTR	DESCRIPTION	DATE	DWN	APVD
IR	-		J	ECR-10-020218	21JUN2011	PS	RRP
			K	SHIELD RAW MATERIAL CHANGE TO BRASS	08MAR2012	PS	RRP



PACKAGED 190 PIECES IN A TRAY	8 POS. 8 CONT.	OVERALL: Ni 1.27 μm MIN. ALL OVER THE CONTACTS	HOUSING: PBT UL 94 V-0 BLACK	2-338556-1
		SOLDER ZONE: Sn 2.5 μm MIN. ON THE SOLDER ZONE OF THE CONTACT	CONTACTS: PHOSPHOR BRONZE	
		MATING ZONE: PLATING CONFIRMS TO PRODUCT REQUIREMENTS AS PER SPECIFICATION 108-19064	SHIELD: BRASS PRE-PLATED (BRIGHT TIN)	
PACKAGING	REMARKS	DESCRIPTION	MATERIAL	P/N
THIS DRAWING IS A CONTROLLED DOCUMENT.		DWN E.v.EIJK CHK M.v.ESSSEN APVD R.SMEETS	 TE Connectivity	
DIMENSIONS: mm		NAME		
		PRODUCT SPEC 108-19064 APPLICATION SPEC 114-19019	8 pos. Modular Jack Side Entry fully shielded with insulation plate	
TOLERANCES UNLESS OTHERWISE SPECIFIED:		WEIGHT -	SIZE A2	CAGE CODE 00779
0 PLC ±0.15 1 PLC ±0.15 2 PLC ±0.15 3 PLC ±0.15 4 PLC ±0.15 ANGLES ±0°30'		CUSTOMER DRAWING	DRAWING NO C=338556	
MATERIAL -		FINISH -	RESTRICTED TO -	
			SCALE 4:1	SHEET 1 OF 2
			REV K	

