



Chipsmall Limited consists of a professional team with an average of over 10 year of expertise in the distribution of electronic components. Based in Hongkong, we have already established firm and mutual-benefit business relationships with customers from,Europe,America and south Asia,supplying obsolete and hard-to-find components to meet their specific needs.

With the principle of "Quality Parts,Customers Priority,Honest Operation,and Considerate Service",our business mainly focus on the distribution of electronic components. Line cards we deal with include Microchip,ALPS,ROHM,Xilinx,Pulse,ON,Everlight and Freescale. Main products comprise IC,Modules,Potentiometer,IC Socket,Relay,Connector.Our parts cover such applications as commercial,industrial, and automotives areas.

We are looking forward to setting up business relationship with you and hope to provide you with the best service and solution. Let us make a better world for our industry!



## Contact us

Tel: +86-755-8981 8866 Fax: +86-755-8427 6832

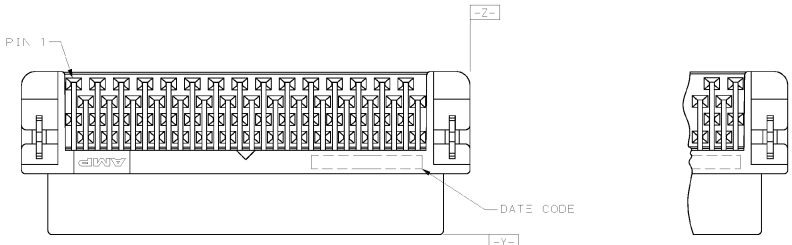
Email & Skype: info@chipsmall.com Web: www.chipsmall.com

Address: A1208, Overseas Decoration Building, #122 Zhenhua RD., Futian, Shenzhen, China



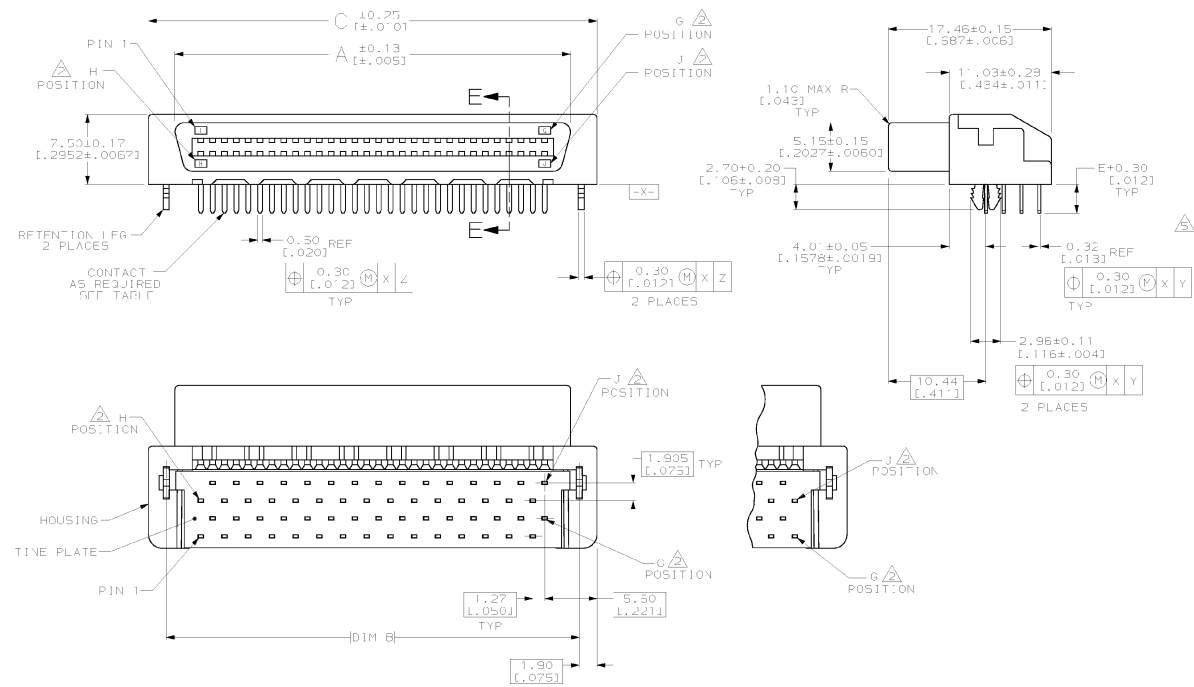
- △ HOUSING & TINE PLATE - LIQUID CRYSTAL POLYMER (LCP), UL 94V 0, BLACK.
- △ G, J, AND H INDICATES NUMBER OF POSITION MARKED ON ASSEMBLY. ALSO SEE TABLE.
- 3. CONNECTOR SOLDER TAILS WILL ACCOMMODATE PRINTED CIRCUIT BOARD THICKNESS OF 0.80 TO 1.60 [0.031 TO 0.063].
- △ CONNECTOR WILL ACCOMMODATE MATING PRINTED CIRCUIT BOARD OF 1.60±0.07 [0.063±0.003].
- △ RETENTION LFGS NOT PRESENT.
- △ OBSOLETE PART NUMBER.

- △ CONTACTS - PHOSPHOR BRONZE PLATED WITH MINIMUM GOLD THICKNESS (SEE TABLE) IN CONTACT AREA AND 0.0038 [0.00150] MINIMUM THICK TIN-LEAD ON SOLDER TING OVER 0.00127 [0.00050] MINIMUM THICK NICKEL UNDERPLATE.
- △ RETENTION LFGS - BRASS PLATED WITH 0.0038 [0.00150] MINIMUM TIN-LEAD OVER 0.00127 [0.00050] MINIMUM NICKEL UNDERPLATE.
- △ RETENTION LFGS - BRASS PLATED WITH 0.0038 [0.00150] MINIMUM TIN OVER 0.00127 [0.00050] MINIMUM NICKEL UNDERPLATE.



FOR 40, 60, 68, 80, 100, 120, 140, 160, 180, 200 POSITIONS ONLY

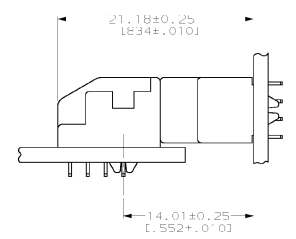
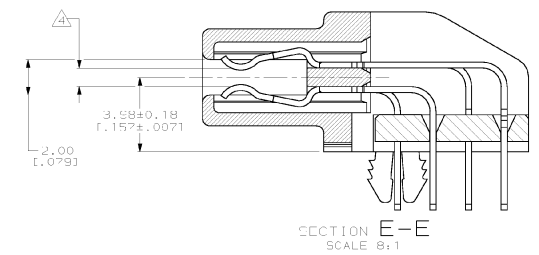
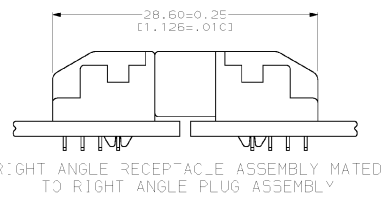
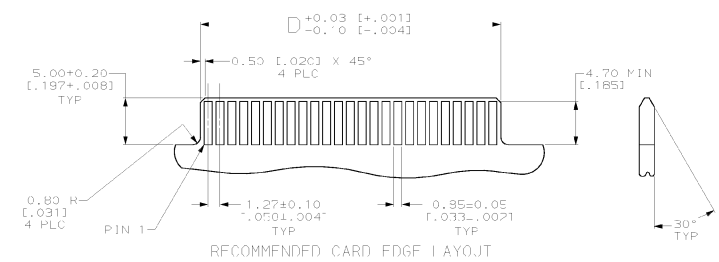
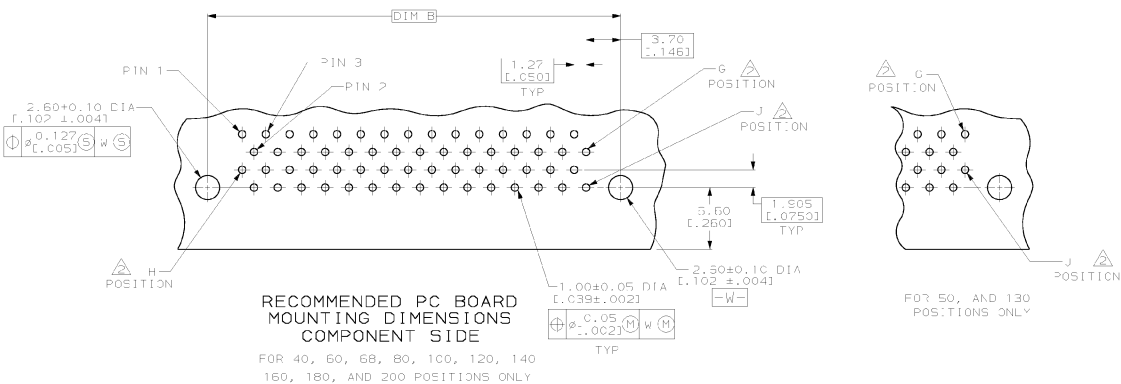
FOR 50, AND 130 POSITIONS ONLY



PRELIMINARY NOT REFINISHED FOR PRODUCTION	2.55 [0.100]	43.6 [1.717]	53.11 [2.091]	49.31 [1.941]	47.45 [1.868]	34	68	35	0.00076 [0.00030]	58	5-557101-7
△△△	3.10 [0.122]	75.63 [3.017]	86.13 [3.391]	82.33 [3.242]	80.47 [3.168]	60	120	61	0.00076 [0.00030]	120	5-557101-6
△△△	3.10 [0.122]	32.18 [1.267]	41.68 [1.641]	37.88 [1.492]	36.02 [1.418]	25	50	26	0.00076 [0.00030]	50	5-557101-5
△△△	3.10 [0.122]	25.83 [1.017]	35.33 [1.391]	31.53 [1.242]	29.67 [1.168]	20	40	21	0.00076 [0.00030]	40	5-557101-4
△△△	3.10 [0.122]	114.73 [4.517]	124.23 [4.891]	120.43 [4.741]	118.57 [4.668]	50	180	91	0.00076 [0.00030]	180	5-557101-3
△△△	3.10 [0.122]	83.33 [3.317]	98.82 [3.891]	95.03 [3.742]	93.17 [3.668]	70	140	71	0.00076 [0.00030]	140	4-557101-9
△△△	3.10 [0.122]	127.43 [5.017]	136.95 [5.391]	132.13 [5.242]	131.27 [5.168]	100	200	101	0.00076 [0.00030]	200	4-557101-1
△△△	3.10 [0.122]	102.03 [4.017]	111.53 [4.391]	107.73 [4.242]	105.87 [4.168]	80	160	81	0.00076 [0.00030]	160	3-557101-7
△△△	3.10 [0.122]	-	92.48 [3.641]	88.68 [3.492]	86.82 [3.418]	65	130	66	0.00076 [0.00030]	130	3-557101-3
△△△	3.10 [0.122]	75.63 [3.017]	86.13 [3.391]	82.33 [3.242]	80.47 [3.168]	60	120	61	0.00076 [0.00030]	120	2-557101-9
△△△	3.10 [0.122]	63.93 [2.517]	73.43 [2.891]	69.63 [2.742]	67.77 [2.668]	50	100	51	0.00076 [0.00030]	100	2-557101-6
△△△	3.10 [0.122]	63.93 [2.517]	73.43 [2.891]	69.63 [2.742]	67.77 [2.668]	50	100	51	0.00076 [0.00030]	100	2-557101-5
△△△	3.10 [0.122]	51.23 [2.017]	60.73 [2.391]	58.93 [2.342]	55.07 [2.168]	40	80	41	0.00076 [0.00030]	80	2-557101-1
△△△	3.10 [0.122]	-	43.6 [1.717]	49.31 [1.941]	47.45 [1.868]	34	68	35	0.00076 [0.00030]	58	1-557101-7
△△△	3.10 [0.122]	-	48.03 [1.891]	44.23 [1.742]	42.37 [1.668]	30	60	31	0.00076 [0.00030]	50	1-557101-3
△△△	3.10 [0.122]	32.18 [1.267]	41.68 [1.641]	37.88 [1.492]	36.02 [1.418]	25	50	26	0.00076 [0.00030]	50	557101-9
△△△	3.10 [0.122]	25.83 [1.017]	35.33 [1.391]	31.53 [1.242]	29.67 [1.168]	20	40	21	0.00076 [0.00030]	40	557101-5
△△△	3.10 [0.122]	-	28.98 [1.141]	25.18 [0.992]	23.32 [0.918]	15	30	16	0.00076 [0.00030]	30	557101-1
NOTES	C	D	C	B	A	6	3	J	11	△	

DO NOT SCALE PRINT. UNLESS SPECIFIED DIMENSIONS IN mm (INCHES): TOLERANCES ON: 12 P.L. DEC ± - 3 P.L. DEC ± - ANGLES ± -	OR R-21-P8 4-10-1 CHC 10-3-89 N. JONES APPD 12-4-88 T.P.F./Z.L.O. APD 12-4-88 J.B. WILKINSON PRODUCT SPEC 108-136/	AMP APP. INCORPORATED Newbury, Pa. 17628
MATERIAL OFF TABLE	FINISH SEE TABLE	RECEPTACLE ASSEMBLY, RIGHT ANGLE, BOARD-TO-BOARD, CHAMP™ .050, SERIES 1
APPLICATION SPEC 114-5045	WEIGHT -	SIZE: CARE CODE: DRAWING NO: 557101 SCALE: 4:1 SHEET: 1 OF 2

REV	DATE	ZONE	LT	DESCRIPTION	DATE	APPD
EW	00			SEE SHEET 1		



DO NOT SCALE PRINT. UNLESS SPECIFIED DIMENSIONS IN mm (INCHES): TOLERANCES ON: 2 PLC DEC ± 3 PLC DEC ± ANGLES ±	DR R-R-90 R. MARTIN CHC 10-3-89 N. JONES APPD 12-4-88 T. PIZZULO	<b>AMP</b> APP. INCORPORATED Newbury, Pa. 1705	
MATERIAL	APPD 12-4-88 J.B. WILKINSON PRODUCT SPEC	NAME RECEPTACLE ASSEMBLY, RIGHT ANGLE, BOARD-TO-BOARD, CHAMP™ .050, SERIES 1	
FINISH	APPLICATION SPEC	SIZE D 00779	DRAWING NO 557101
WEIGHT		SCALE 4:1	SHEET 2 OF 2