



Chipsmall Limited consists of a professional team with an average of over 10 year of expertise in the distribution of electronic components. Based in Hongkong, we have already established firm and mutual-benefit business relationships with customers from,Europe,America and south Asia,supplying obsolete and hard-to-find components to meet their specific needs.

With the principle of "Quality Parts,Customers Priority,Honest Operation,and Considerate Service",our business mainly focus on the distribution of electronic components. Line cards we deal with include Microchip,ALPS,ROHM,Xilinx,Pulse,ON,Everlight and Freescale. Main products comprise IC,Modules,Potentiometer,IC Socket,Relay,Connector.Our parts cover such applications as commercial,industrial, and automotives areas.

We are looking forward to setting up business relationship with you and hope to provide you with the best service and solution. Let us make a better world for our industry!



## Contact us

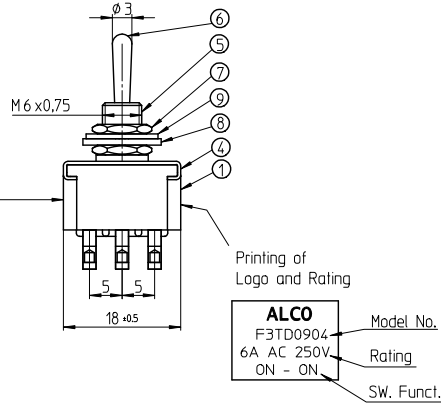
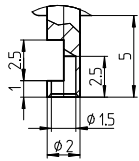
Tel: +86-755-8981 8866 Fax: +86-755-8427 6832

Email & Skype: info@chipsmall.com Web: www.chipsmall.com

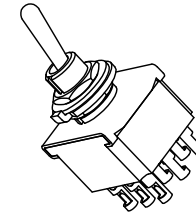
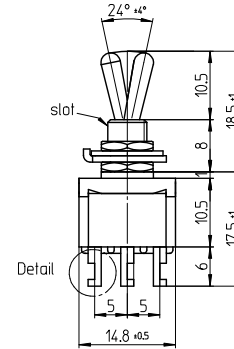
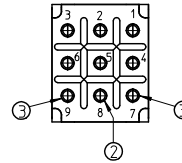
Address: A1208, Overseas Decoration Building, #122 Zhenhua RD., Futian, Shenzhen, China



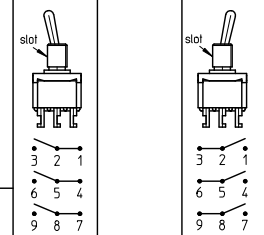
Detail  
Maßstab 5:1



**ALCO**  
F3TD0904 Model No.  
6A AC 250V Rating  
ON - ON SW. Funct.



Function Chart



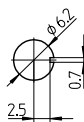
TE PN	Part	ON	---	ON
2-6437630-8	F3TD0904	ON	---	ON

Notes:

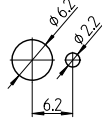
Operating temperature -20°C to +70°C

All materials and finishes comply with RoHS directive

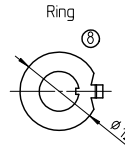
Panel Cutout



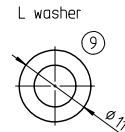
Panel Cutout using Ring



1.5 thick



1 thick



0.63 thick

Specifications

TE PN	Part	Rating	Initial Contact Resistance	Insulation Resistance	Dielectric Strength	Endurance
2-6437630-8	F3TD0904	AC 125V 6A AC 250V 6A	MAX 10 milliohms at DC 2 ~ 4V 1A	MIN 1000 M Ohms at DC 500V	AC 1kV/1 min (AC 1,2kV/1 sec)	electrically 50,000 cycles at 20 cycles/min (rated load resistive) mechanically 100,000 cycles at 20 cycles/min

Materials Chart

PART NO.	PART NAME:	MATERIAL/SURFACE:	OPTIONAL DESCRIPTION
1	Case	Polyester Resin	
2	F Contact	99,98% silver + C3602BD	Ep-Cu/Ni3,AuFb
3	Common	C3602BD	Ep-Cu/Ni3,AuFb
4	Frame	SUS	
5	Bushing	C3602BD	Ep-Cu/Ni3b
6	Actuator	C3602BD	Ep-Cu/Ni3,Cr1b
7	Nut	C3602BD	Ep-Cu/Ni3b
8	Ring	SPCC	Ep-Fe/Cu2,Ni3b
9	L washer	SK-5	Ep-Fe/Cu2,Ni4b

REPLACEMENT FOR: DWG LOC NO: IF SHEET: 1 OF 1 REVISION: A A 2

THIS DRAWING IS A CONTROLLED DOCUMENT. HANDWRITTEN CHANGES ARE NOT ALLOWED

SCALE: NAME: **Toggle Switch triple pole** DWG NO: **1968516**

Standard Lever OPTIONAL NO: Customer Drawing

DEPARTMENT: D&E  
DRAWN: 03/01/2007 SA008716  
CHECKED: [ ]  
APPROVED: [ ]

ECR-NO.: DATE NAME INFO DATE NAME

THIS INFORMATION IS CONFIDENTIAL AND PROPRIETARY TO TYCO ELECTRONICS AUSTRIA GMBH, AND ITS WORLDWIDE SUBSIDIARIES. ANY INFORMATION CONTAINED HEREIN IS NOT TO BE DISCLOSED TO ANYONE OTHER THAN TYCO ELECTRONICS AUSTRIA GMBH OR TYCO ELECTRONICS AUSTRIA GMBH'S AUTHORIZED REPRESENTATIVE.