



Chipsmall Limited consists of a professional team with an average of over 10 year of expertise in the distribution of electronic components. Based in Hongkong, we have already established firm and mutual-benefit business relationships with customers from,Europe,America and south Asia,supplying obsolete and hard-to-find components to meet their specific needs.

With the principle of “Quality Parts,Customers Priority,Honest Operation,and Considerate Service”,our business mainly focus on the distribution of electronic components. Line cards we deal with include Microchip,ALPS,ROHM,Xilinx,Pulse,ON,Everlight and Freescale. Main products comprise IC,Modules,Potentiometer,IC Socket,Relay,Connector.Our parts cover such applications as commercial,industrial, and automotives areas.

We are looking forward to setting up business relationship with you and hope to provide you with the best service and solution. Let us make a better world for our industry!



## Contact us

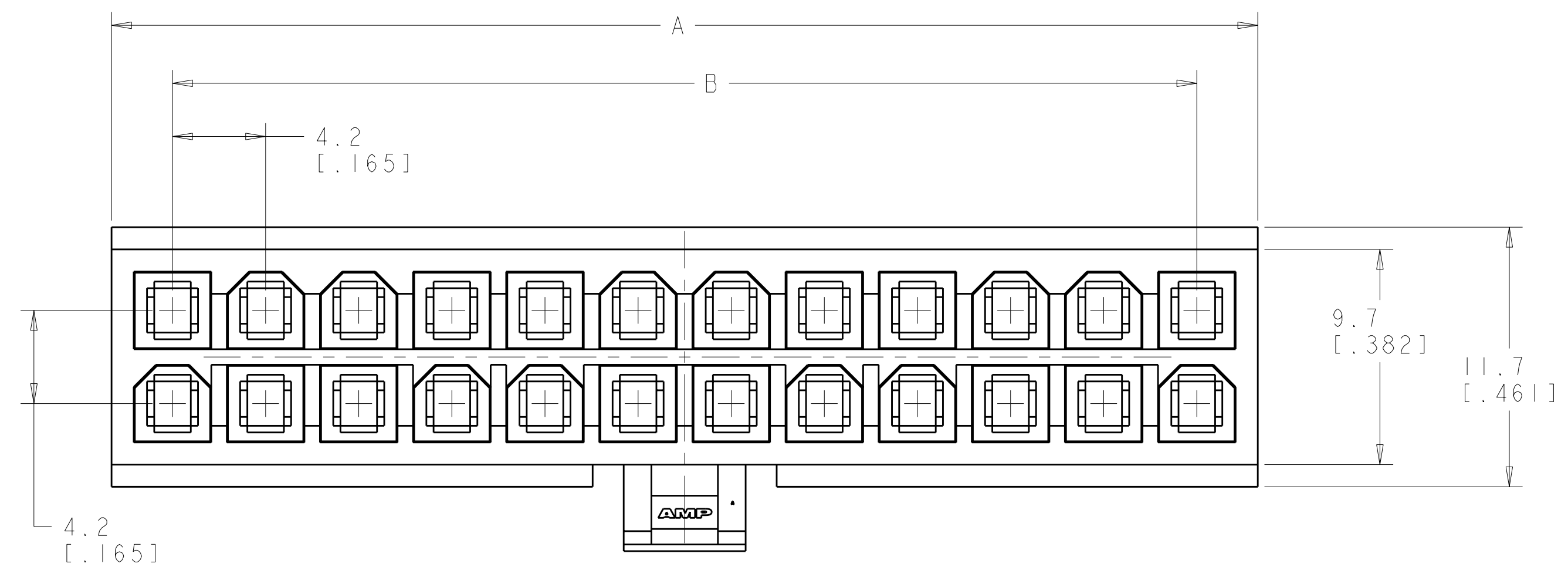
Tel: +86-755-8981 8866 Fax: +86-755-8427 6832

Email & Skype: info@chipsmall.com Web: www.chipsmall.com

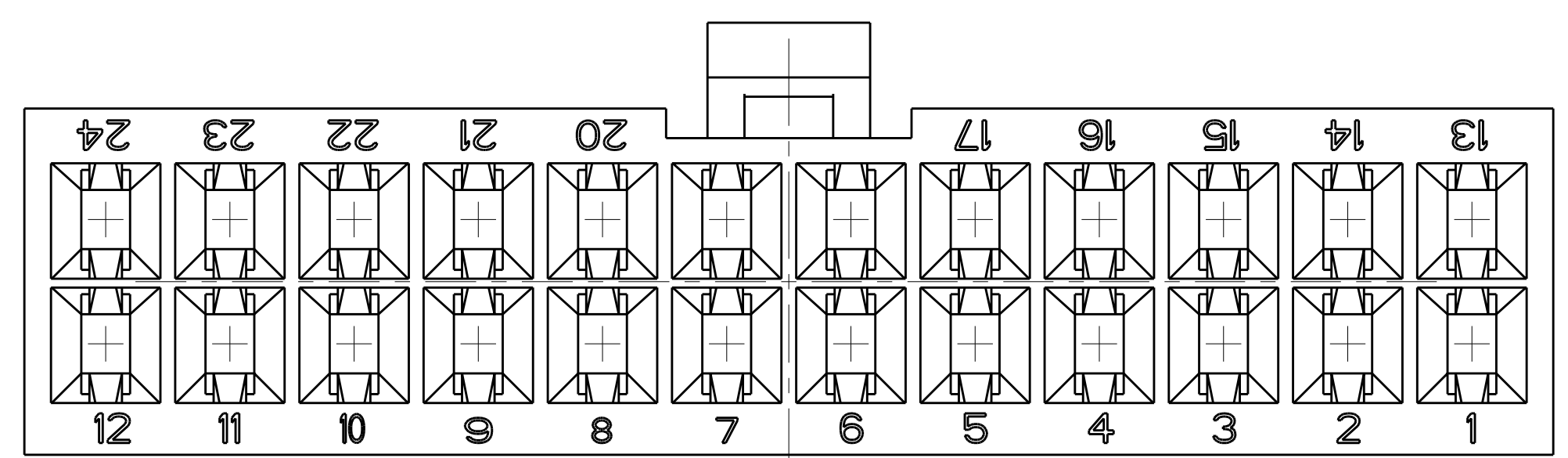
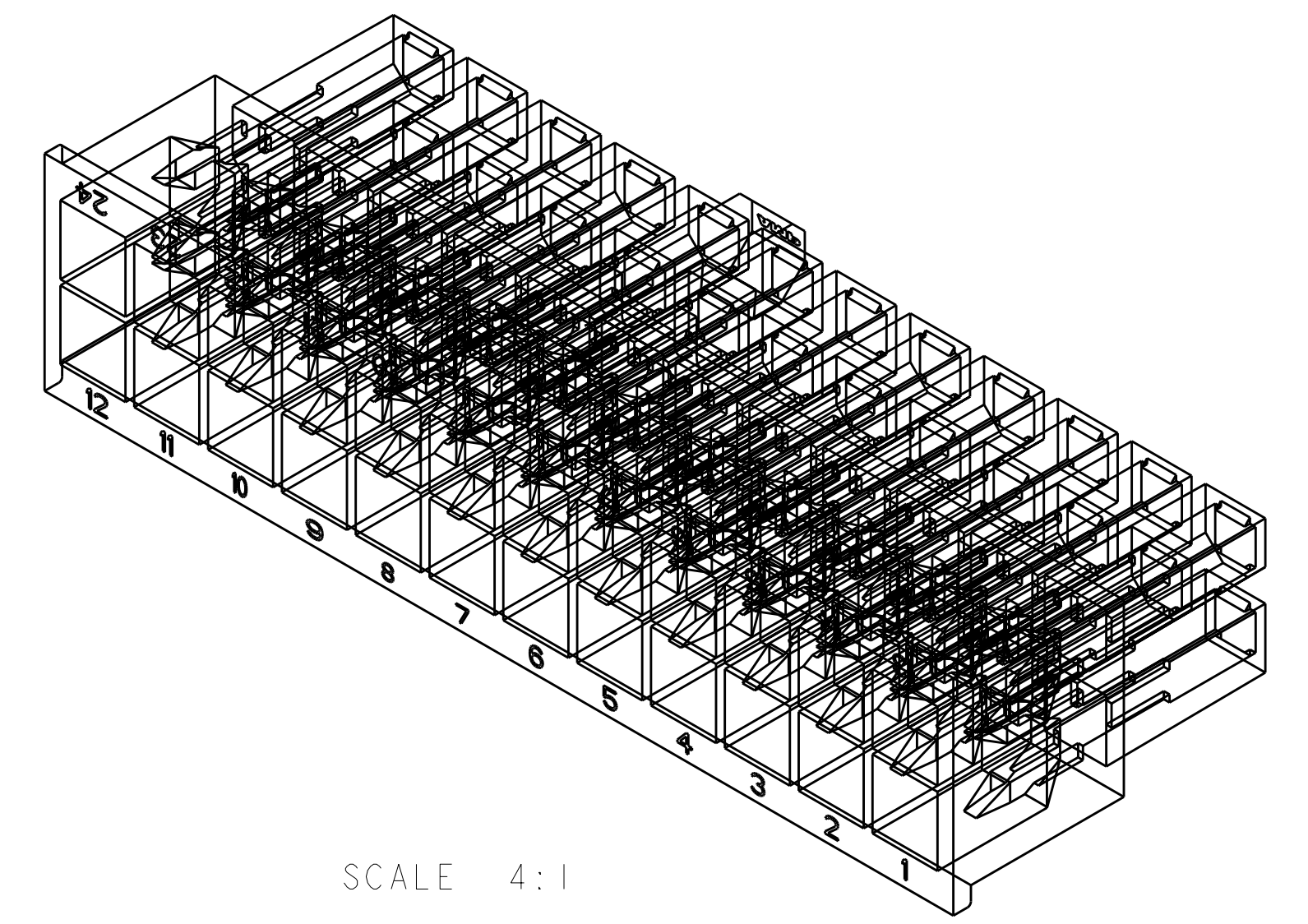
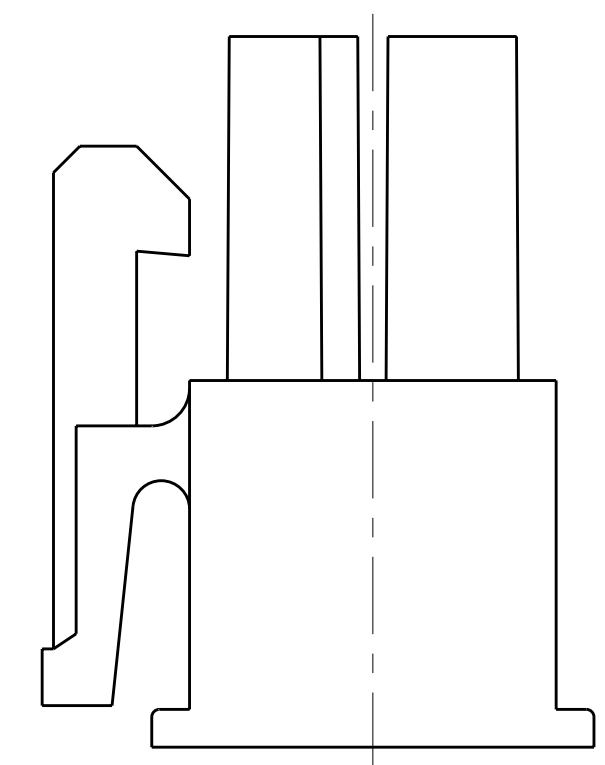
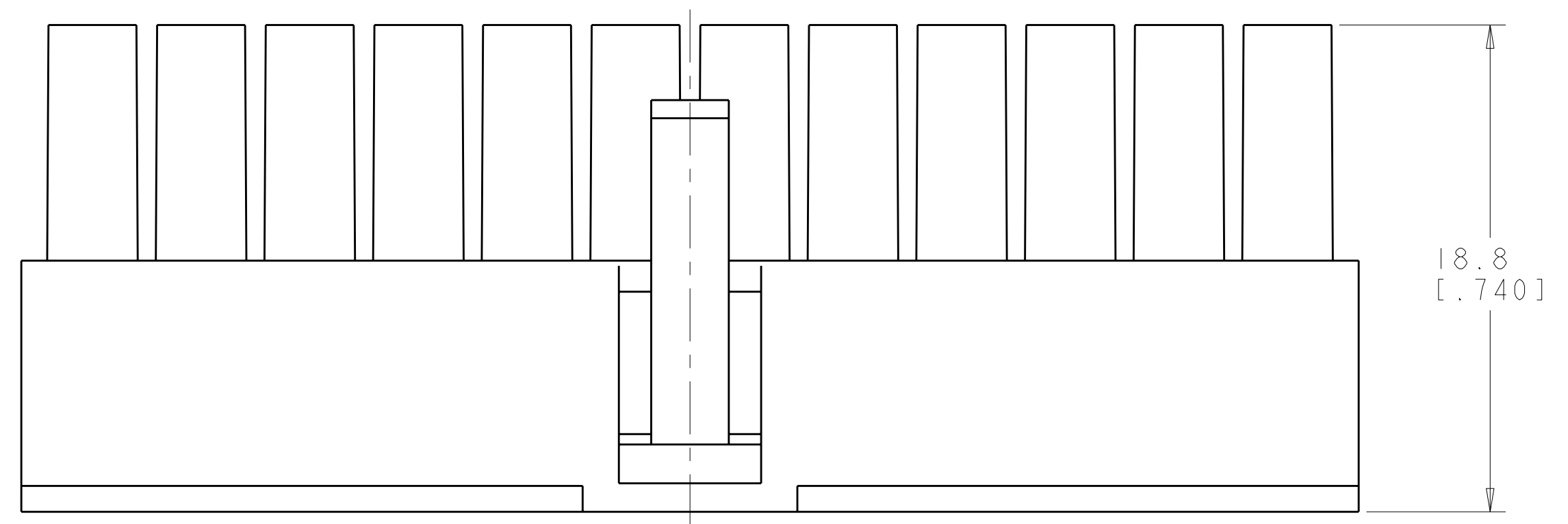
Address: A1208, Overseas Decoration Building, #122 Zhenhua RD., Futian, Shenzhen, China



LOC	DIST	REVISIONS			
CM	00	REV	DATE	BY	APPD
		C1	REVIS PER ECO-11-005027	15MAR2011	RK HMR



- △ NYLON, UL94V-0, NATURAL.
- 2. DIMENSIONS IN BRACKETS ARE IN INCHES.
- 3. FEMALE CONTACTS MUST BE INSERTED SO THAT THE TOP OF THE WIRE AND INSULATION CRIMPS ARE FACING THE CIRCUIT NUMBER OF THE POSITION INTO WHICH IT IS BEING INSERTED OR 180° FROM THE CIRCUIT NUMBER FOR THAT POSITION.



4032.2	24	46.2[1.82]	51.7[2.04]	2-794657-4
3717.6	22	42[1.65]	47.5[1.87]	2-794657-2
3403	20	37.8[1.49]	43.3[1.71]	2-794657-0
3088.5	18	33.6[1.32]	39.1[1.54]	1-794657-8
2774	16	29.4[1.16]	34.9[1.37]	1-794657-6
2459.5	14	25.2[0.99]	30.7[1.21]	1-794657-4
2144.9	12	21[0.83]	26.5[1.04]	1-794657-2
1830.4	10	16.8[0.66]	22.3[0.88]	1-794657-0
1515.9	8	12.6[0.5]	18.1[0.71]	794657-8
1201.3	6	8.4[0.33]	13.9[0.55]	794657-6
886.8	4	4.2[0.17]	9.7[0.38]	794657-4
575.1	2	0[0]	5.5[0.22]	794657-2
VOLUME mm <sup>3</sup>	NO OF POSITIONS	B	A±0.2[.01]	PART NUMBER

DIMENSIONS:		TOLERANCES UNLESS OTHERWISE SPECIFIED:		MATERIAL:		FINISH:		APPROVALS:		CUSTOMER DRAWING							
mm	[INCHES]	9 PLC	±0.2[.01]	PLC	±0.2[.01]	PLC	±0.13[.005]	PLC	±	PLC	±	40°/30°	APPROVALS:	CUSTOMER DRAWING	SCALE 4:1	SHEET 1 OF 1	REV C1



RECEPTACLE HOUSING, 2 TO 24 POSITION, AMP-DUAC(TM) POWER CONNECTOR

SIZE CAGE CODE DRAWING NO. A100779C=794657