



Chipsmall Limited consists of a professional team with an average of over 10 year of expertise in the distribution of electronic components. Based in Hongkong, we have already established firm and mutual-benefit business relationships with customers from,Europe,America and south Asia,supplying obsolete and hard-to-find components to meet their specific needs.

With the principle of “Quality Parts,Customers Priority,Honest Operation,and Considerate Service”,our business mainly focus on the distribution of electronic components. Line cards we deal with include Microchip,ALPS,ROHM,Xilinx,Pulse,ON,Everlight and Freescale. Main products comprise IC,Modules,Potentiometer,IC Socket,Relay,Connector.Our parts cover such applications as commercial,industrial, and automotives areas.

We are looking forward to setting up business relationship with you and hope to provide you with the best service and solution. Let us make a better world for our industry!



Contact us

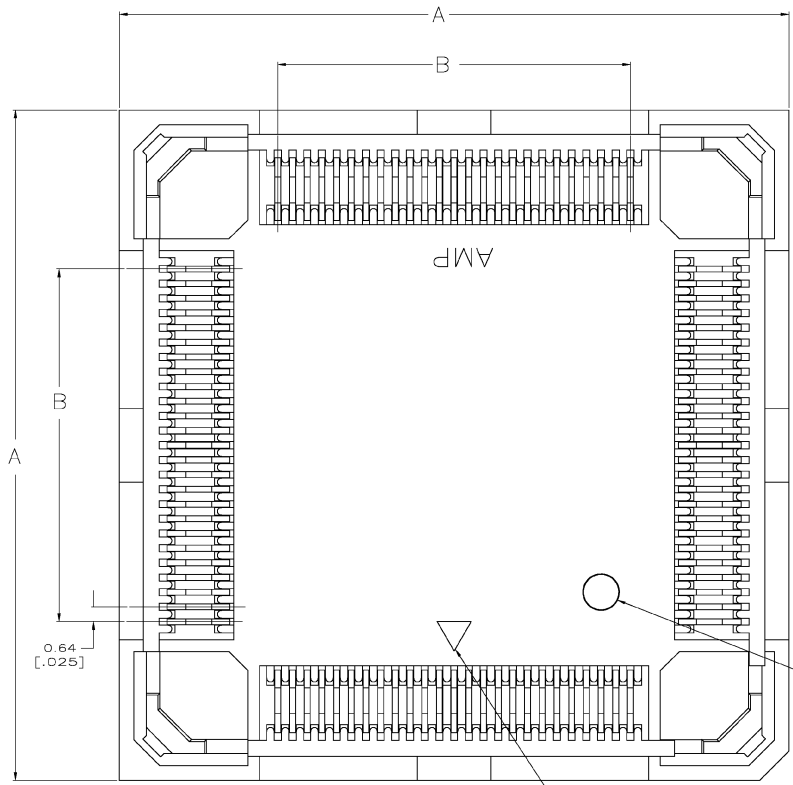
Tel: +86-755-8981 8866 Fax: +86-755-8427 6832

Email & Skype: info@chipsmall.com Web: www.chipsmall.com

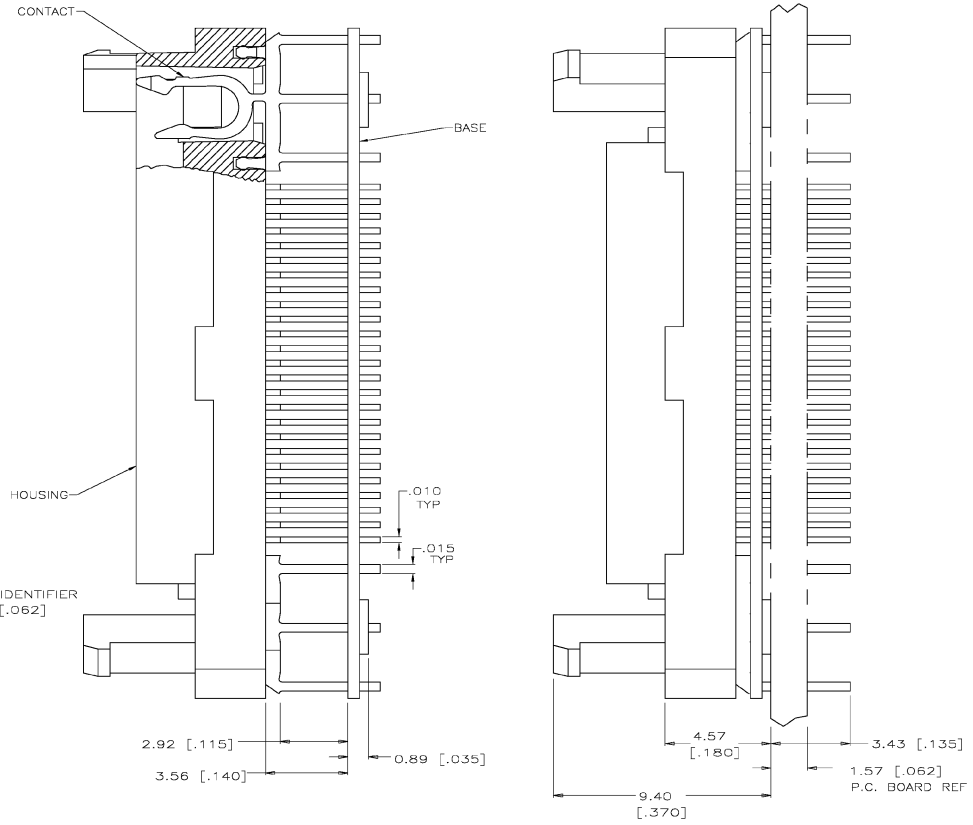
Address: A1208, Overseas Decoration Building, #122 Zhenhua RD., Futian, Shenzhen, China



REV	DATE	DESCRIPTION	BY	CHK	APP
AG	53				
M		063C-0297-03		TK	KW



SUB-ASSEMBLY SHOWN AS SHIPPED SUB-ASSEMBLY SHOWN IN FINAL POSITION



- △ HOUSING MATERIAL SHALL BE LIQUID CRYSTAL POLYMER. (BLACK)
- △ CONTACT MATERIAL SHALL BE PHOS. BRONZE. PLATING SHALL BE 0.00508 [.000200] MIN. TIN LEAD OVER 0.00127 [.000050] MIN. NICKEL ALL OVER.
- △ BASE MATERIAL SHALL BE LIQUID CRYSTAL POLYMER. (BLACK)
- △ SOCKET TO BE MOUNTED WITH AMP LOGO AND CHAMFER ON SOCKET LOCATED IN THIS CORNER OF P.C. BOARD.
- △ THIS AREA TO BE FREE OF COMPONENTS FOR ACCESS OF THE MICRO-PITCH HAND TOOL. MINIMUM OF TWO OPPOSITE SIDES.
- △ CONTACT MATERIAL SHALL BE PHOS. BRONZE. PLATING SHALL BE 0.00508 [.000200] MIN. TIN (LEAD FREE) OVER 0.00127 [.000050] MIN. NICKEL ALL OVER.
- △ PRELIMINARY NOT RELEASED FOR MANUFACTURING.

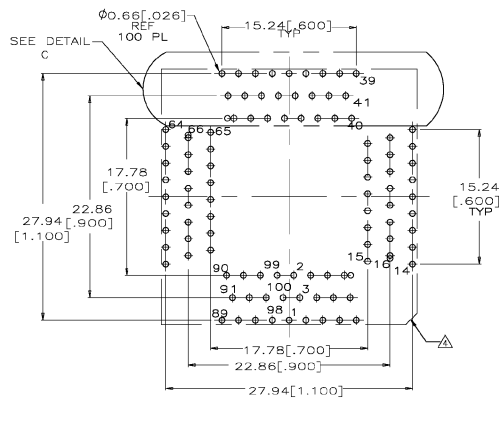
△	20.32 [.800]	34.04 [1.340]	2-821949-5	132
△	15.24 [.600]	28.96 [1.140]	△ 2-821949-4	100
△	20.32 [.800]	34.04 [1.340]	821949-5	132
△	15.24 [.600]	28.96 [1.140]	821949-4	100
FINISH	B	A	PART NO.	NO OF POSN

THIS DRAWING IS A CONTROLLED DOCUMENT.

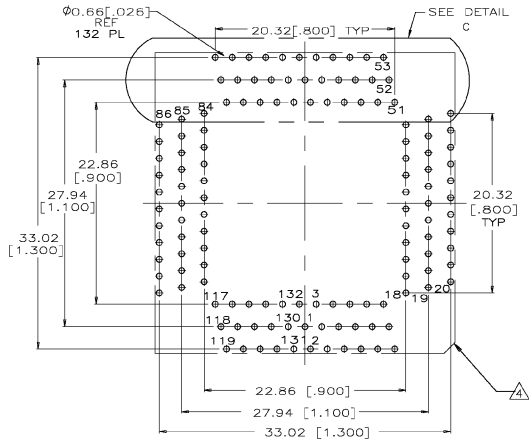
DESIGNED BY	K. SALMON	DATE	10-14-82
DRAWN BY	R. MILLER	DATE	10-13-82
CHECKED BY		DATE	
APPROVED BY		DATE	

Micro-Pitch Socket
 025 C/LPQPP GULLING,
 HOUSING SUB-ASSEMBLY

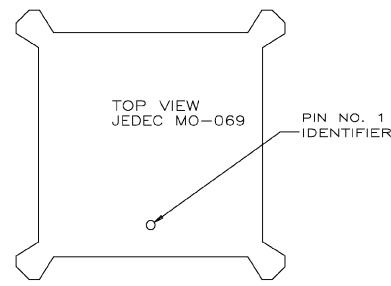
SIZE: A1 DATE CODE: 00779 DRAWING NO: 821949 RESTRICTED TO: CUSTOMER DRAWING SCALE: 10:1 SHEET: 1 OF 3 REV: M



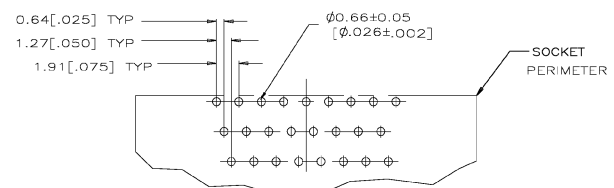
RECOMMENDED P.C. BOARD HOLE PATTERN
 SOCKET SIDE
 100 POSN.
 SCALE: 4:1



RECOMMENDED P.C. BOARD HOLE PATTERN
 SOCKET SIDE
 132 POSN.
 SCALE: 4:1



CHIP POLARIZATION REFERENCE VIEW
 (PIN NUMBERING ON THIS SHEET ARE FOR CENTER LOCATION OF PIN 1 IDENTIFIER)

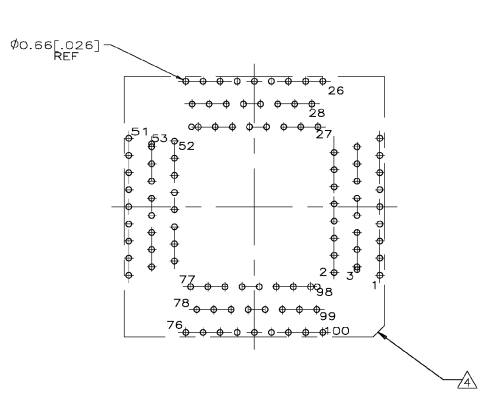


DETAIL C
 (TYP FOR ALL POSITIONS)
 SCALE 5:1

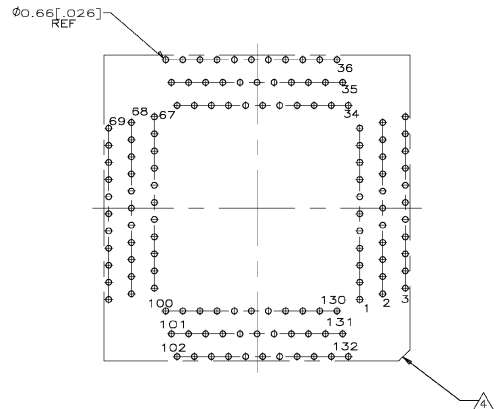
THIS DRAWING IS A CONTROLLED DOCUMENT.		DATE	10-4-91	TFC Electronics Corporation	
DESIGNED BY		DATE	10-15-91	Hartford, PA	
DRAWN BY		DATE	10-15-91	TFC Electronics	
CHECKED BY		DATE		MICRO-PITCH SOCKET	
APPROVED BY		DATE		.025 C/L P/Q/P GULLWING HOUSING SUB-ASSEMBLY	
APPLICATION SPEC		SIZE	A1	DATE CODE	821949
MATERIAL		RESTRICTIONS		SCALE	10:1
FINISH		CUSTOMER DRAWING		SHEET	2 OF 3

THIS DRAWING IS UNCLASSIFIED. RELEASED FOR PUBLICATION. ALL RIGHTS RESERVED.

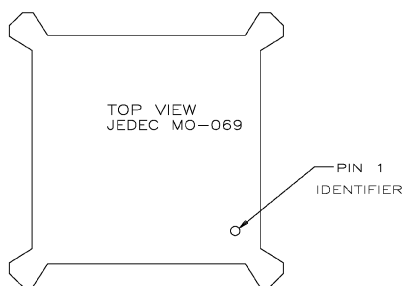
REV. NO.		REVISIONS			
NO.	DATE	DESCRIPTION	BY	CHK	APP'D
M		SEE SHEET 1	12JUNG3	TK	KW



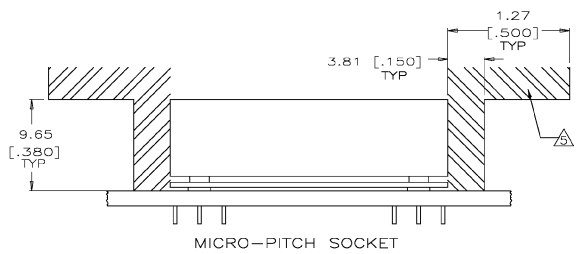
RECOMMENDED P.C. BOARD HOLE PATTERN
 SOCKET SIDE
 100 POSN.
 SEE SHEET 2 100 POSN FOR DIMENSIONS



RECOMMENDED P.C. BOARD HOLE PATTERN
 SOCKET SIDE
 132 POSN.
 SEE SHEET 2 132 POSN FOR DIMENSIONS



CHIP POLARIZATION REFERENCE VIEW
 (PIN NUMBERING ON THIS SHEET IS FOR OFF CENTER LOCATION OF PIN 1 IDENTIFIER)



MICRO-PITCH SOCKET

THIS DRAWING IS A CONTROLLED DOCUMENT.		BY: K. SALMON	10-4-90	Type Electronics Corporation Harrisburg, Pa.	
DRAWN BY: R. MILLER		10-5-90	SYNTEC Electronics		
CHECKED BY: J. SMITH		10-5-90	MFG: MICRO-PITCH SOCKET		
APPROVED BY: [Signature]		Q25 C/L PQFP GULLWING HOUSING SUB-ASSEMBLY			
MATERIAL: [Blank]		SIZE: A1	CAGE CODE: 00779	DRAWING NO: 821949	RESTRICTED TO: [Blank]
CUSTOMER DRAWING		SCALE: 10:1		SHEET: 3	REV: M