



Chipsmall Limited consists of a professional team with an average of over 10 year of expertise in the distribution of electronic components. Based in Hongkong, we have already established firm and mutual-benefit business relationships with customers from,Europe,America and south Asia,supplying obsolete and hard-to-find components to meet their specific needs.

With the principle of "Quality Parts,Customers Priority,Honest Operation,and Considerate Service",our business mainly focus on the distribution of electronic components. Line cards we deal with include Microchip,ALPS,ROHM,Xilinx,Pulse,ON,Everlight and Freescale. Main products comprise IC,Modules,Potentiometer,IC Socket,Relay,Connector.Our parts cover such applications as commercial,industrial, and automotives areas.

We are looking forward to setting up business relationship with you and hope to provide you with the best service and solution. Let us make a better world for our industry!



## Contact us

Tel: +86-755-8981 8866 Fax: +86-755-8427 6832

Email & Skype: info@chipsmall.com Web: www.chipsmall.com

Address: A1208, Overseas Decoration Building, #122 Zhenhua RD., Futian, Shenzhen, China



REVISION HISTORY			REVISION APPROVAL			
REV	ECO	DESCRIPTION	PROJECT ENGINEER	APPROVAL DATE	DOCUMENT CONTROL	APPROVAL DATE
A	E11833	INITIAL RELEASE	XT	2/15/02	K1S	2/14/02

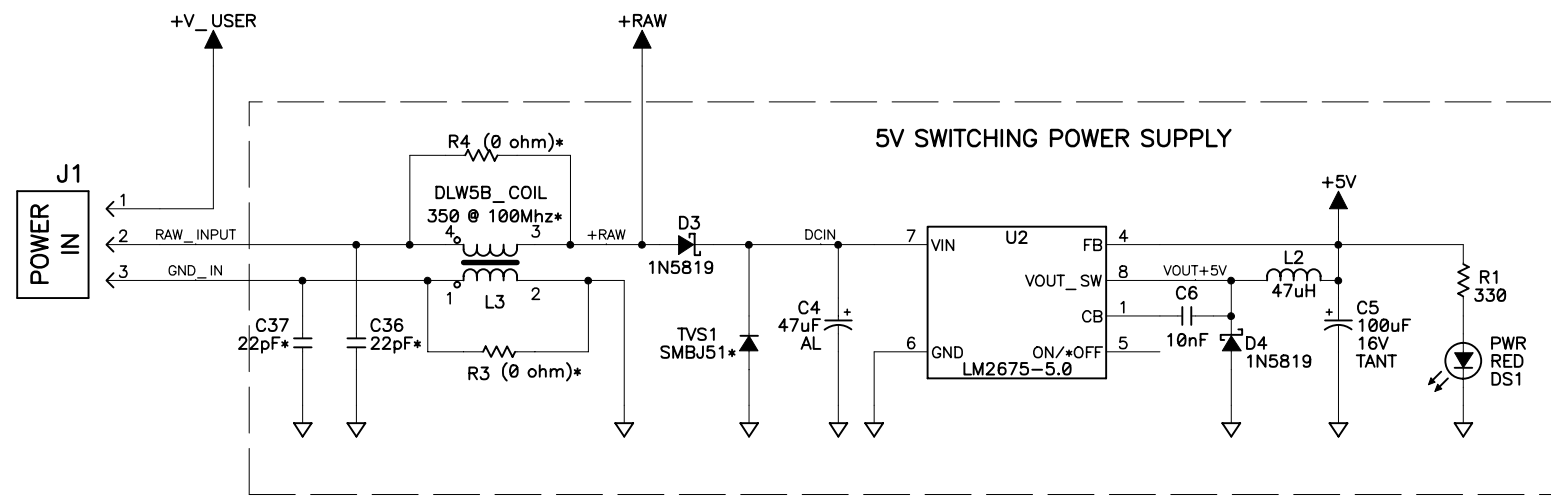
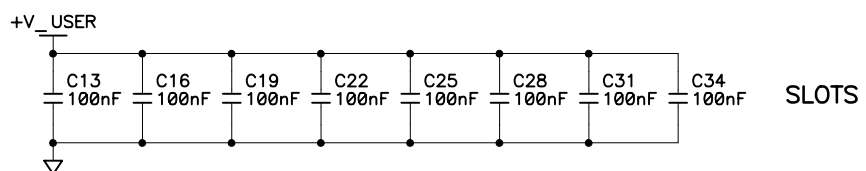
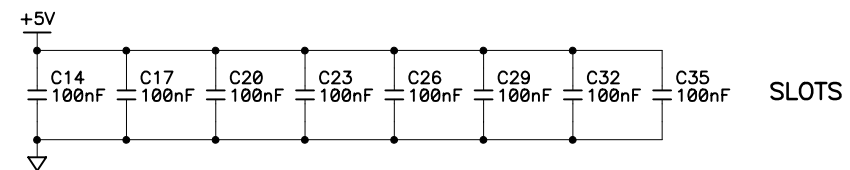
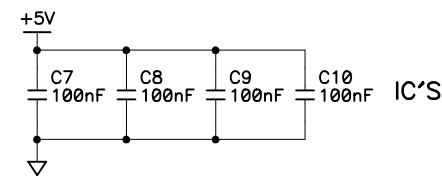


TABLE A

REF DES	DEVICE	DEVICE VOLTAGE INFORMATION			DEVICE: FILTER CAP REF DES(s)
		GND	+5V	NO CONNECTS	
U2	LM2675-5.0			2,3	
U3	74VHC245	10	20		C7
U4	74VHC245	10	20		C8
U5	74VHC138	8	16		C9
U6	74VHC245	10	20		C10

Decoupling Capacitors




- NOTES: UNLESS OTHERWISE SPECIFIED;
- ALL RESISTOR VALUES ARE IN OHMS, 1/10W, 5%
  - ALL CAPACITORS ARE 50VDC OR HIGHER.
  - THE ORIGIN SOURCE OF A VOLTAGE IS REPRESENTED BY (  $\blacktriangle$  ), AND ALL REFERENCES TO THAT VOLTAGE ARE REPRESENTED BY (  $\top$  ).
  - COMPONENT VALUES SHOWN WITH AN ASTERISK (\*) FOLLOWING THE VALUE, MAY HAVE DIFFERENT VALUES OR MAY NOT BE STUFFED DEPENDING ON MODEL. SEE STUFFING CHART FOR CLARIFICATION.

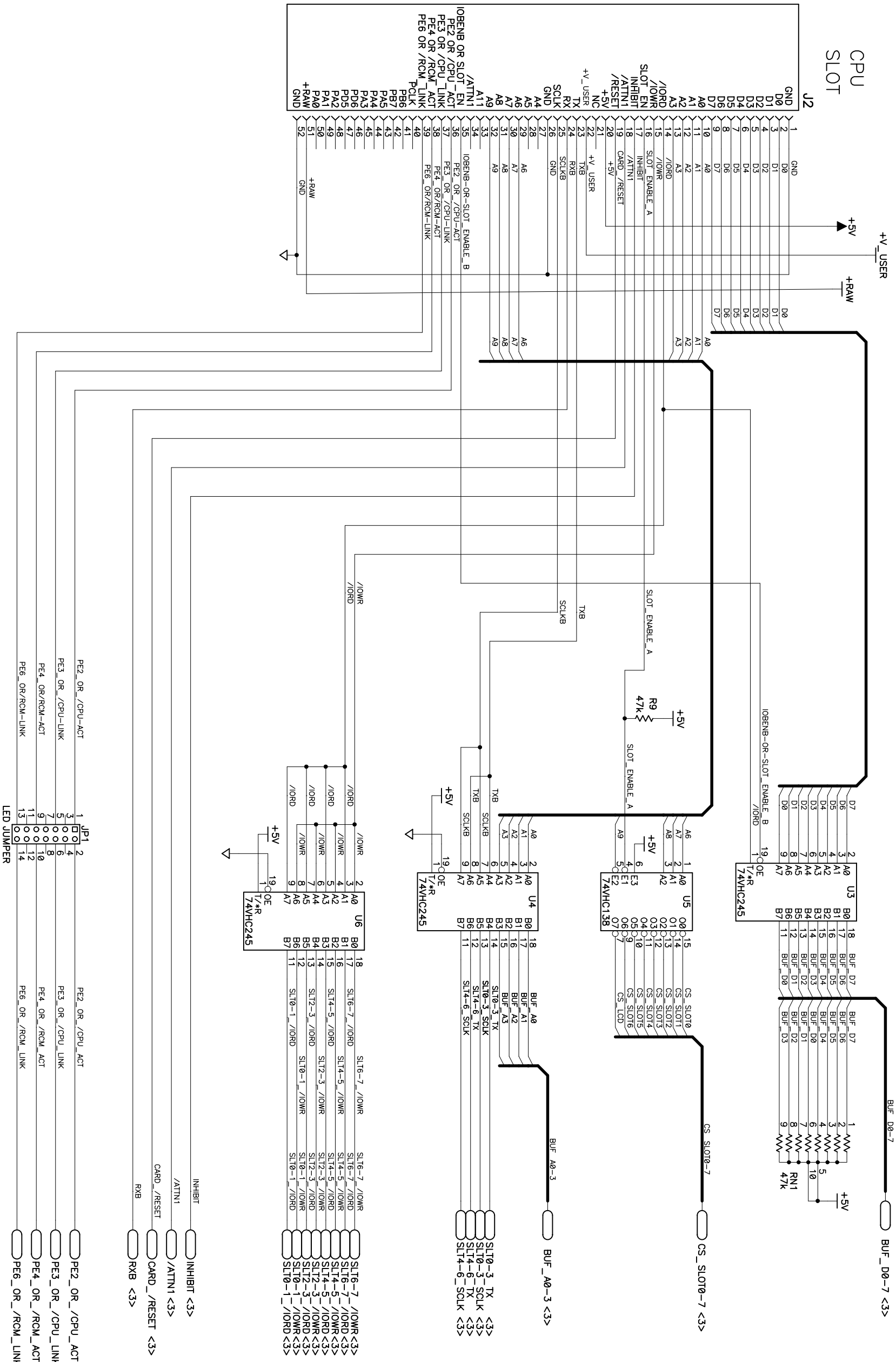
STUFFING TABLE

	PART	SR9010 BACKPLANE
POWER SUPPLY CIRCUIT (PAGE 1)	R3, R4	ZERO OHM RES
	L3	NOT STUFFED
	C36	NOT STUFFED
	C37	NOT STUFFED
	TVS1	NOT STUFFED
TERMINATION RES (PAGE 3)	R2, R5	NOT STUFFED
LED JUMPER (PAGE 2)	JP1	1-2, 5-6, 9-10,13-14

11FEB02 COPYRIGHT 2001, Z-WORLD, INC.

APPEND THE FOLLOWING DOCUMENTS WHEN CHANGING THIS DOCUMENT:		DRAWING CONTENT:		TITLE	
		DRAWN BY: (INITIAL RELEASE)	<b>XUAN TRUONG</b>	SCHEMATIC DIAGRAM	
		REVISED BY:		SR9010 7 SLOT	
		APPROVALS: INITIAL RELEASE		BACKPLANE	
		PROJECT ENGINEER:	Xuan Truong	2/15/02	 2900 SPAFFORD ST. DAVIS, CA 95616 530 - 757 - 4616
		ENGINEERING MANAGER:	R.Matthews	2/15/02	
		SIGNATURES	DATE		
		SCALE	NONE	RELEASE DATE	2/15/02
		SIZE	<b>B</b>	DWG NO.	<b>090-0143</b>
				SHEET	1 OF 3

# BACKPLANE INTERFACE

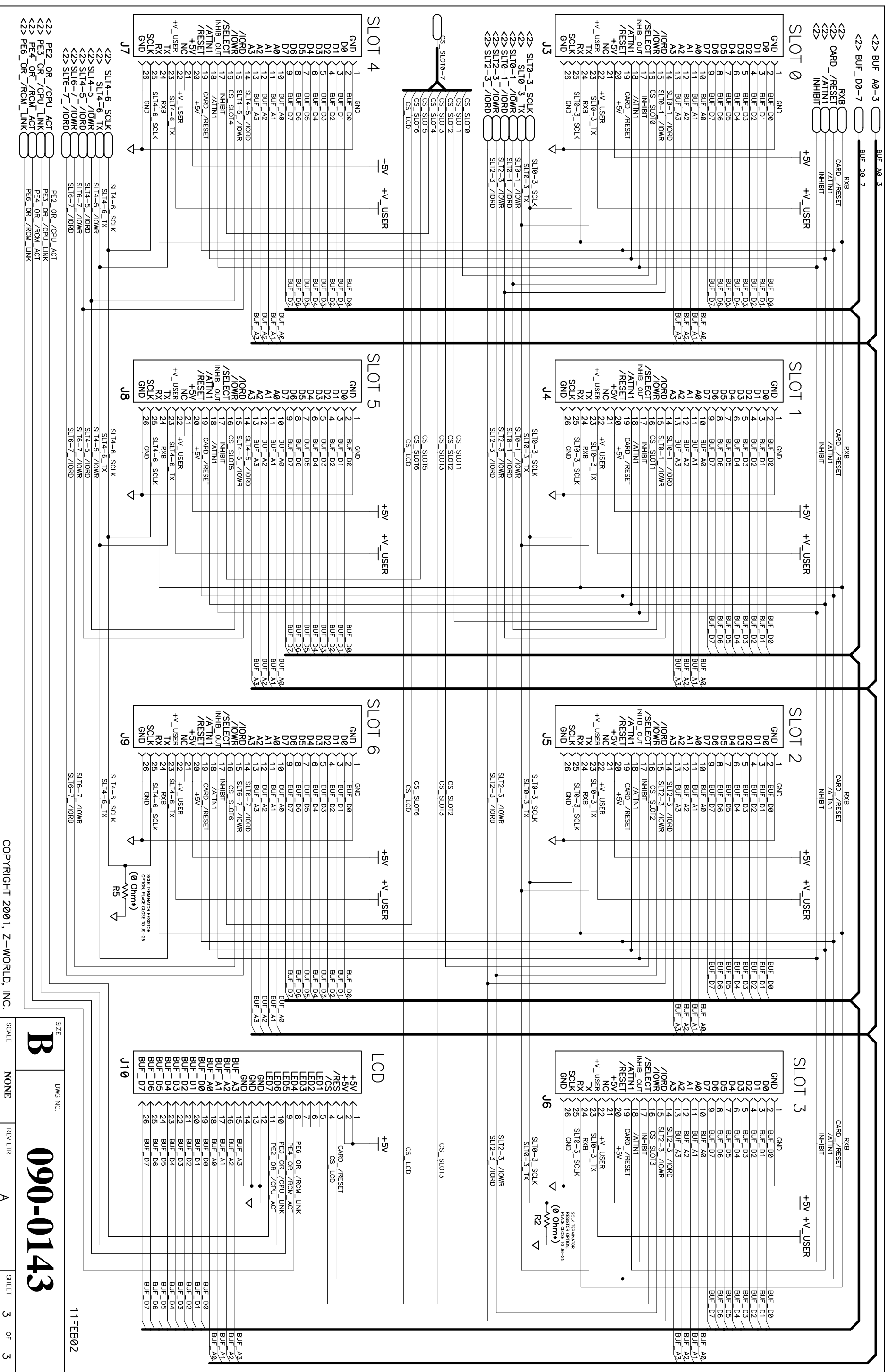


PE2_OR_/CPU_ACT	1	2	3	4	5	6	7	8	9	10	11	12	13	14	PE2_OR_/CPU_ACT <3>
PE3_OR_/CPU_LINK	1	2	3	4	5	6	7	8	9	10	11	12	13	14	PE3_OR_/CPU_LINK <3>
PE4_OR/RCM_ACT	1	2	3	4	5	6	7	8	9	10	11	12	13	14	PE4_OR_/RCM_ACT <3>
PE6_OR/RCM_LINK	1	2	3	4	5	6	7	8	9	10	11	12	13	14	PE6_OR_/RCM_LINK <3>

11FEB02 COPYRIGHT 2001, Z-WORLD, INC.

SIZE **B** DWG NO. **090-0143**

SCALE NONE REV LTR A SHEET 2 OF 3



COPYRIGHT 2001, Z-WORLD, INC.

SIZE	DWG. NO.	SCALE	REV LTR	SHEET	OF
B	090-0143	NONE	A	3	3

11FEB02