



Chipsmall Limited consists of a professional team with an average of over 10 year of expertise in the distribution of electronic components. Based in Hongkong, we have already established firm and mutual-benefit business relationships with customers from,Europe,America and south Asia,supplying obsolete and hard-to-find components to meet their specific needs.

With the principle of “Quality Parts,Customers Priority,Honest Operation,and Considerate Service”,our business mainly focus on the distribution of electronic components. Line cards we deal with include Microchip,ALPS,ROHM,Xilinx,Pulse,ON,Everlight and Freescale. Main products comprise IC,Modules,Potentiometer,IC Socket,Relay,Connector.Our parts cover such applications as commercial,industrial, and automotives areas.

We are looking forward to setting up business relationship with you and hope to provide you with the best service and solution. Let us make a better world for our industry!



Contact us

Tel: +86-755-8981 8866 Fax: +86-755-8427 6832

Email & Skype: info@chipsmall.com Web: www.chipsmall.com

Address: A1208, Overseas Decoration Building, #122 Zhenhua RD., Futian, Shenzhen, China





COMMUNICATIONS AND CONTROL PROCESSOR



RABBITCORE[®] RCM4200 SERIES

Device intelligence and Fast Ethernet connectivity for data logging and serial to Ethernet applications

The RCM4200 series of core modules are pin-compatible and easily interchangeable with other RCM4XXX based products. The RCM4200 acts as the microprocessor of an embedded system and is designed to mount directly to a user-supplied motherboard, allowing CMOS-compatible digital devices to interface with the motherboard.

The RCM4200 offers robust features including large memory and Fast Ethernet, making it ideal for intensive

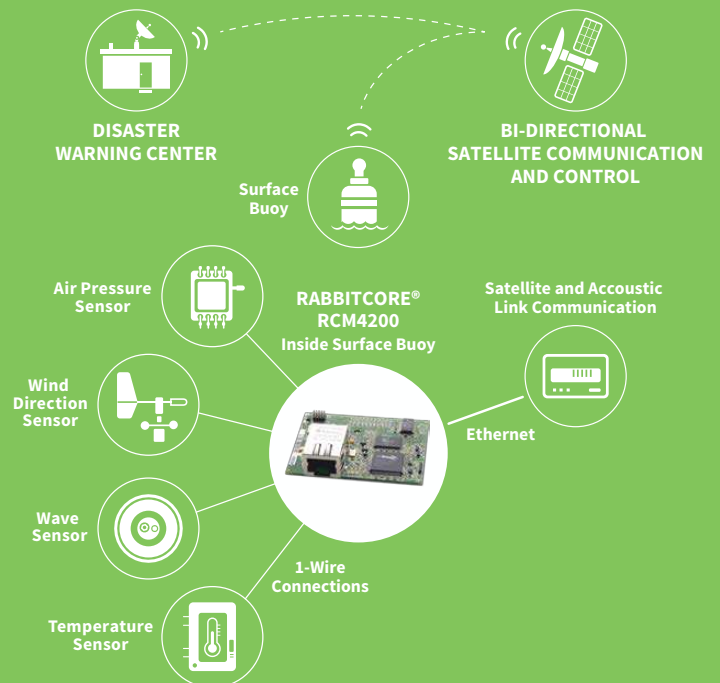
communications and data-logging applications. The optional analog helps to diversify your connectivity options.

Evaluation of the RCM4200 is easy with the RabbitCore RCM4200 development kit, which provides all the necessary hardware and software to quickly get started.

BENEFITS

- Rabbit 4000 running at 59 MHz
- 10/100Base-T Ethernet, RJ-45 jack
- 512K Flash / 512K Data SRAM
- 4 MB or 8 MB Serial Flash for data storage
- Up to 35 GPIO, up to 5 serial ports
- 8 channels 12-bit A/D converter option
- Embedded device networking, intelligence, I/O control and web server capability
- Ability to remotely update firmware

APPLICATION EXAMPLE



RELATED PRODUCTS



RabbitCore[®] RCM3209 Series



RabbitCore[®] RCM4000 Series



RabbitCore[®] RCM4300 Series



Rabbit[®] SBC BL4S200 Series



Dynamic C[®]

SPECIFICATIONS

RCM4200

RCM4210

FEATURES

MICROPROCESSOR	Rabbit® 4000 at 59 MHz	Rabbit® 4000 at 29 MHz
EMI REDUCTION	Spectrum spreader for reduced EMI (radiated emissions)	
ETHERNET PORT	10/100Base-T, RJ-45, 3 LEDs	
DATA SRAM	512K (8-bit)	
PROGRAM EXECUTION FAST SRAM	512K (8-bit)	N/A
FLASH MEMORY	512K (8-bit)	
SERIAL FLASH MEMORY	8 MB	4 MB
BACKUP BATTERY	Connection for user-supplied backup battery (to support RTC and data SRAM)	
GENERAL-PURPOSE I/O	25 parallel digital I/O lines: Configurable with 4 layers of alternate functions	35 parallel digital I/O lines: Configurable with 4 layers of alternate functions
ADDITIONAL INPUTS	2 startup mode, reset in, CONVERT	2 startup mode, reset in
ADDITIONAL OUTPUTS	Status, reset out, analog VREF	Status, reset out
ANALOG INPUTS	8 channels single-ended or 4 channels differential Programmable gain 1, 2, 4, 5, 8, 10, 16, and 20 V/V	N/A
A/D CONVERTER RESOLUTION	12 bits (11 bits single-ended)	N/A
A/D CONVERSION TIME (INCLUDING 120 MS RAW)	180 µs	N/A
AUXILIARY I/O BUS	Can be configured for 8 data lines and 6 address lines (shared with parallel I/O lines), plus I/O read/write	
SERIAL PORTS	4 shared high-speed, CMOS-compatible ports: <ul style="list-style-type: none"> All 4 configurable as asynchronous (with IrDA), 4 as clocked serial (SPI) 1 asynchronous clocked serial port shared with programming port 1 clocked serial port shared with serial flash 1 clocked serial port shared with A/D converter 	5 shared high-speed, CMOS-compatible ports: <ul style="list-style-type: none"> All 5 configurable as asynchronous (with IrDA), 4 as clocked serial (SPI), and 1 as SDLC/HDLC 1 clocked serial port shared with serial flash 1 asynchronous clocked serial port dedicated for programming
SERIAL RATE	Maximum asynchronous baud rate = CLK/8	
SLAVE INTERFACE	Slave port allows the RCM4200 to be used as an intelligent peripheral device slaved to a master processor	
REAL TIME CLOCK	Yes	
TIMERS	Ten 8-bit timers (6 cascable from the first), one 10-bit timer with 2 match registers, and one 16-bit timer with 4 outputs and 8 set/reset registers	
WATCHDOG/SUPERVISOR	Yes	
PULSE-WIDTH MODULATORS	<ul style="list-style-type: none"> 3 channels synchronized PWM with 10-bit counter 3 channels variable-phase or syn-chronized PWM with 16-bit counter 	<ul style="list-style-type: none"> 4 channels synchronized PWM with 10-bit counter 4 channels variable-phase or syn-chronized PWM with 16-bit counter
INPUT CAPTURE	2 input capture channels can be used to time input signals from various port pins	
QUADRATURE DECODER	1 quadrature decoder channel accepts inputs from external incremental encoder modules	2 quadrature decoder channel accepts inputs from external incremental encoder modules
POWER (PINS UNLOADED)	3.0–3.6 VDC, 240 mA (typ.) @ 3.3V, 275 mA @ 3.6V and 85°C (max.)	3.0–3.6 VDC, 200 (typ.) mA @ 3.3V, 225 mA @ 3.6V and 85°C (max.)
OPERATING TEMPERATURE	-40° C to +85° C	
HUMIDITY	5% to 95%, non-condensing	
CONNECTORS	One 2 × 25, 1.27 mm pitch IDC signal header, One 2 × 5, 1.27 mm pitch IDC programming header	
BOARD SIZE	1.84" × 2.42" × 0.84" (47 mm × 61 mm × 21 mm)	

PART NUMBERS

DESCRIPTION

20-101-1131	RCM4200
20-101-1132	RCM4210

DIGI SERVICE AND SUPPORT / You can purchase with confidence knowing that Digi is always available to serve you with expert technical support and our industry leading warranty. For detailed information visit www.digi.com/support.

© 1996-2016 Digi International Inc. All rights reserved.
All trademarks are the property of their respective owners.

91001548
C2/816

DIGI INTERNATIONAL WORLDWIDE HQ
877-912-3444 / 952-912-3444 / www.digi.com

DIGI INTERNATIONAL FRANCE
+33-1-55-61-98-98 / www.digi.fr

DIGI INTERNATIONAL JAPAN
+81-3-5428-0261 / www.digi-intl.co.jp

DIGI INTERNATIONAL SINGAPORE
+65-6213-5380

DIGI INTERNATIONAL CHINA
+86-21-50492199 / www.digi.com.cn

