



Chipsmall Limited consists of a professional team with an average of over 10 year of expertise in the distribution of electronic components. Based in Hongkong, we have already established firm and mutual-benefit business relationships with customers from,Europe,America and south Asia,supplying obsolete and hard-to-find components to meet their specific needs.

With the principle of “Quality Parts,Customers Priority,Honest Operation,and Considerate Service”,our business mainly focus on the distribution of electronic components. Line cards we deal with include Microchip,ALPS,ROHM,Xilinx,Pulse,ON,Everlight and Freescale. Main products comprise IC,Modules,Potentiometer,IC Socket,Relay,Connector.Our parts cover such applications as commercial,industrial, and automotives areas.

We are looking forward to setting up business relationship with you and hope to provide you with the best service and solution. Let us make a better world for our industry!



Contact us

Tel: +86-755-8981 8866 Fax: +86-755-8427 6832

Email & Skype: info@chipsmall.com Web: www.chipsmall.com

Address: A1208, Overseas Decoration Building, #122 Zhenhua RD., Futian, Shenzhen, China





Series 354000 DIP-to-SOIC Adapter

FEATURES

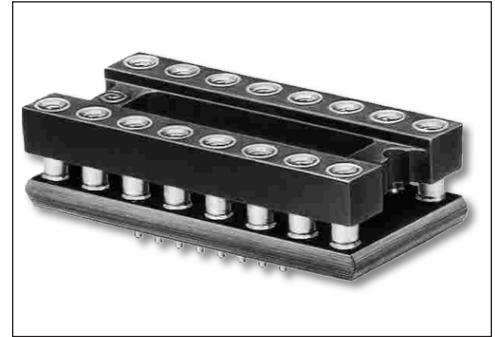
- Convenient, cost-effective means of converting DIP-to-SOIC PC board layouts.

GENERAL SPECIFICATIONS

- SOCKET BODY: black, UL 94V-0 glass-filled 4/6 Nylon 170°C continuous use temp
- PCB: FR-4, 0.062 [1.58] thick
- MALE ADAPTER PIN: Brass 360 1/2-hard per UNS C36000, ASTM B16/B16M
- MALE PIN PLATING: 200μ [5.08μ] Sn/Pb 93/7 per ASTM B579-73 over 100μ [2.54μ] Ni per SAE AMS-QQ-N-290
- FEMALE CONTACT PIN: Brass 360 1/2-hard per UNS C36000, ASTM B16/B16M
- FEMALE PIN PLATING: 10μ [0.254μ] Au per MIL-G-45204 over 100μ [2.54μ] Ni per SAE AMS-QQ-N-290
- 4-FINGER COLLET CONTACT: BeCu per UNS C17200, ASTM B194-08
- FEMALE CONTACT PLATING: 10μ [0.254μ] Au per MIL-G-45204 over 50μ [1.27μ] Ni per SAE AMS-QQ-N-290
- CONTACT CURRENT RATING: 3 amps
- OPERATING TEMPERATURE: 221°F [105°C]
- INSERTION FORCE: 180g/pin; based on a 0.018 [0.46] dia. test lead
- WITHDRAWAL FORCE: 90g/pin; based on a 0.018 [0.46] dia. test lead
- NORMAL FORCE: 140g/pin; based on a 0.018 [0.46] dia. test lead
- SOCKET ACCEPTS LEADS: 0.015-0.025 [0.38-0.64] in dia., 0.100-0.125 [2.54-3.18] long

MOUNTING CONSIDERATIONS

- SUGGESTED PCB SOLDER PAD SIZE: 0.028 [0.71] min. width



CUSTOMIZATION: In addition to the standard products shown on this page, Aries specializes in custom design and production. Special materials, platings, sizes, and configurations can be furnished, depending on the quantity. **NOTE:** Aries reserves the right to change product general specifications without notice.

ORDERING INFORMATION

XX-354000-X 0

Pins _____ Plating Sn/Pb
 8, 14, 16, 20, 24, 28
 Series _____
 Adapter Pin Options _____
 (see P/N Suffix Table)
 1 = Short Adapter Pin
 2 = Long Adapter Pin

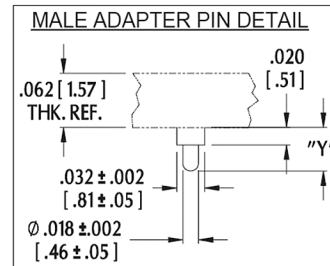
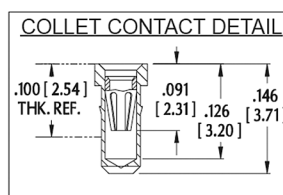
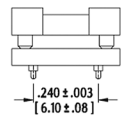
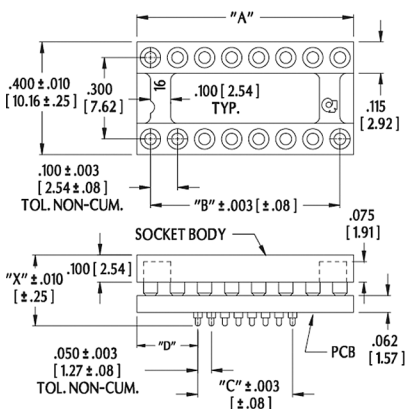
P/N Suffix	Dim. "X"	Dim. "Y"
-10	0.265 [16.73]	0.050 [1.27]
-20	0.325 [8.26]	0.110 [2.79]

ALL DIMENSIONS: INCHES [MILLIMETERS]

ALL TOLERANCES: ±0.005 [0.13] UNLESS OTHERWISE SPECIFIED

CONSULT FACTORY FOR OTHER SIZES AND CONFIGURATIONS

Pins	Dim. "A"	Dim. "B"	Dim. "C"	Dim. "D"
8	0.400 [10.16]	0.400 [10.16]	0.100 [2.54]	0.125 [3.175]
14	0.700 [17.78]	0.600 [15.24]	0.300 [7.62]	0.225 [5.72]
16	0.800 [20.32]	0.700 [17.78]	0.350 [8.89]	0.225 [5.72]
20	1.000 [25.40]	0.900 [22.86]	0.450 [11.43]	0.275 [6.99]
24	1.200 [30.48]	1.100 [27.94]	0.550 [13.97]	0.325 [8.26]
28	1.400 [35.56]	1.300 [33.02]	0.650 [16.51]	0.375 [9.53]



Bristol, PA 19007-6810 USA
 TEL (215) 781-9956 • FAX (215) 781-9845
 WWW.ARIESELEC.COM • INFO@ARIESELEC.COM