



Chipsmall Limited consists of a professional team with an average of over 10 year of expertise in the distribution of electronic components. Based in Hongkong, we have already established firm and mutual-benefit business relationships with customers from,Europe,America and south Asia,supplying obsolete and hard-to-find components to meet their specific needs.

With the principle of “Quality Parts,Customers Priority,Honest Operation,and Considerate Service”,our business mainly focus on the distribution of electronic components. Line cards we deal with include Microchip,ALPS,ROHM,Xilinx,Pulse,ON,Everlight and Freescale. Main products comprise IC,Modules,Potentiometer,IC Socket,Relay,Connector.Our parts cover such applications as commercial,industrial, and automotives areas.

We are looking forward to setting up business relationship with you and hope to provide you with the best service and solution. Let us make a better world for our industry!



Contact us

Tel: +86-755-8981 8866 Fax: +86-755-8427 6832

Email & Skype: info@chipsmall.com Web: www.chipsmall.com

Address: A1208, Overseas Decoration Building, #122 Zhenhua RD., Futian, Shenzhen, China

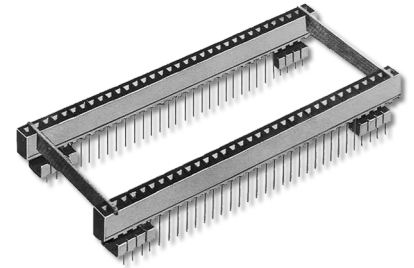




Series 700 Elevator Strip-Line™ Socket w/Bifurcated Contacts & Solder Pin Tails

FEATURES

- Elevated Mounting of LCDs or Other Odd-centered or High Pin-count Components
- Any Height from 0.360 to 2.000 [9.14 to 50.80]
- Optional Spacer for Mounting on 0.300 [7.62], 0.600 [15.24], 0.900 [22.86], 1.100 [27.94], and 1.300 [33.02] Centers

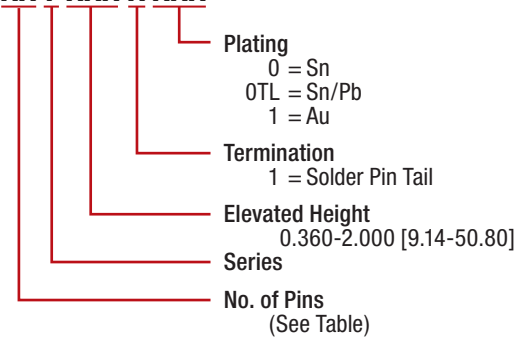


GENERAL SPECIFICATIONS

- **BODY:** black UL 94V-0 glass-filled 4/6 Nylon
- **PIN:** Grade A Phosphor Bronze per QQ-B-750
- **OPTIONAL SPACER:** FR-4 0.032 [0.81] thick
- **PIN PLATING:** 10μ [0.25μ] min. Au per MIL-G-45204 over 50μ [1.27μ] min. Ni per SAE AMS-QQ-N-290B; **-OR-** 200μ [5.08μ] min. matte Sn per ASTM B545-97(2004) e1 over 50μ [1.27μ] min. Ni per SAE AMS-QQ-N-290B; **-OR-** 200μ [5.08μ] min. 90/10 Sn/Pb per MIL-T-10727 Type 1 over 50μ [1.27μ] min. Ni per SAE AMS-QQ-N-290B
- **CURRENT RATING:** 1.5 amps
- **OPERATING TEMPERATURE:** -67°F to 221°F [-55°C to 105°C] Sn & Sn/Pb plating; -67°F to 257°F [-55°C to 125°C] Au
- **INSERTION FORCE:** 110g/pin average
- **WITHDRAWAL FORCE:** 75g/pin average
- **ACCEPTS LEADS:** flat leads up to 0.014 x 0.020 wide [0.36-0.51], Round Leads up to 0.020 [0.51] dia.
- **LEAD LENGTHS:** from seating plane 0.080-0.160 [2.03-4.06]

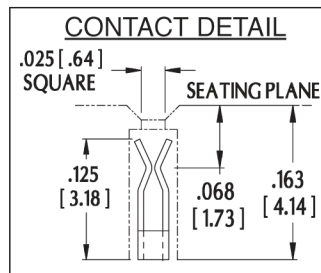
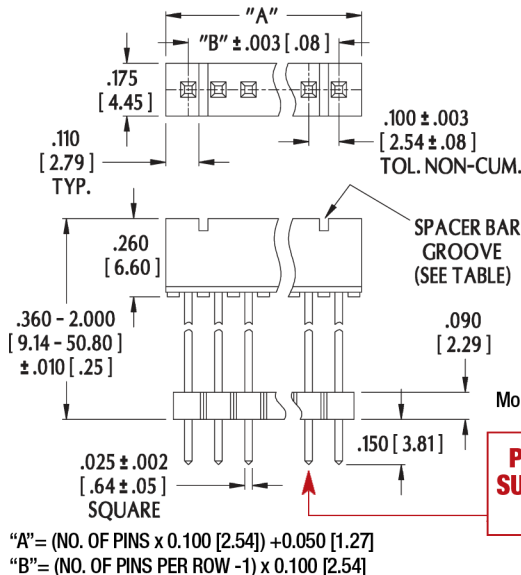
ORDERING INFORMATION

XX 7 XXX-X XXX



MOUNTING CONSIDERATIONS

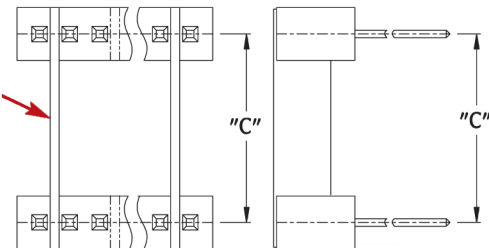
- **SUGGESTED PCB HOLE SIZE:** 0.045 ±0.002 [1.14 ±0.05] dia.



No. of Pins	No. of Grooves
20	2
25	2
30	2
34	3
40	2

SPACER BAR
Consult Factory with
Center-to-Center
Mounting Desired (Dim. "C")

**PINS MAY BE
SUPPLIED WITH
CUT ENDS**



ALL DIMENSIONS: INCHES [MILLIMETERS]
ALL TOLERANCES: ±0.005 [0.13] UNLESS OTHERWISE SPECIFIED
FOR COLLET SOCKETS WITH SOLDER PIN TAILS, SEE DATA SHEETS 12012
CONSULT FACTORY FOR OTHER SIZES AND CONFIGURATIONS

CUSTOMIZATION: ARIES SPECIALIZES IN CUSTOM DESIGN AND PRODUCTION. SPECIAL MATERIALS, PLATINGS, SIZES, AND CONFIGURATIONS CAN BE FURNISHED, DEPENDING ON QUANTITY.

ARIES RESERVES THE RIGHT TO CHANGE PRODUCT GENERAL SPECIFICATIONS WITHOUT NOTICE

PRINTOUTS OF THIS DOCUMENT MAY BE OUT-OF-DATE AND SHOULD BE CONSIDERED UNCONTROLLED



ARIES
ELECTRONICS, INC.

2609 Bartram Road • Bristol, PA 19007-6810 USA
TEL 215-781-9956 • FAX 215-781-9845
WWW.ARIESELEC.COM • INFO@ARIESELEC.COM



12010
Rev. 6.1
1 of 1