



Chipsmall Limited consists of a professional team with an average of over 10 year of expertise in the distribution of electronic components. Based in Hongkong, we have already established firm and mutual-benefit business relationships with customers from,Europe,America and south Asia,supplying obsolete and hard-to-find components to meet their specific needs.

With the principle of "Quality Parts,Customers Priority,Honest Operation,and Considerate Service",our business mainly focus on the distribution of electronic components. Line cards we deal with include Microchip,ALPS,ROHM,Xilinx,Pulse,ON,Everlight and Freescale. Main products comprise IC,Modules,Potentiometer,IC Socket,Relay,Connector.Our parts cover such applications as commercial,industrial, and automotives areas.

We are looking forward to setting up business relationship with you and hope to provide you with the best service and solution. Let us make a better world for our industry!



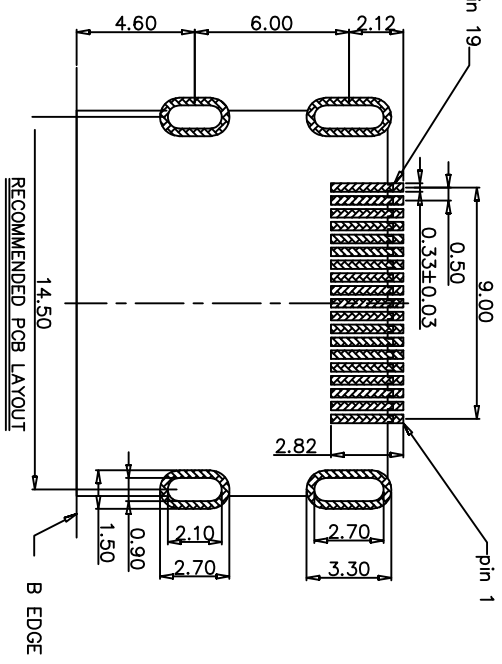
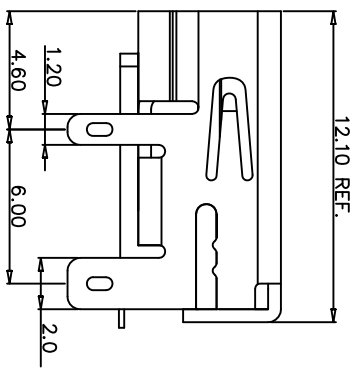
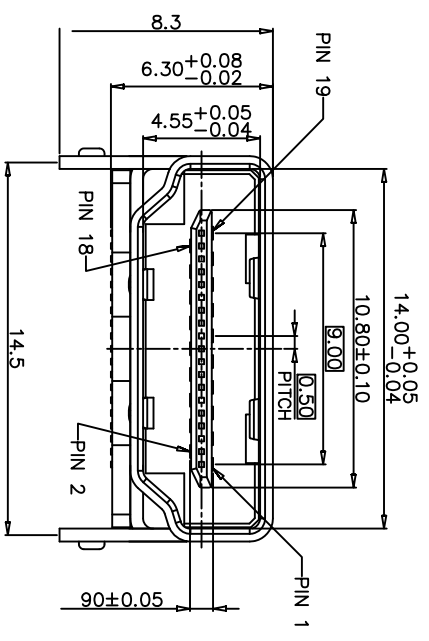
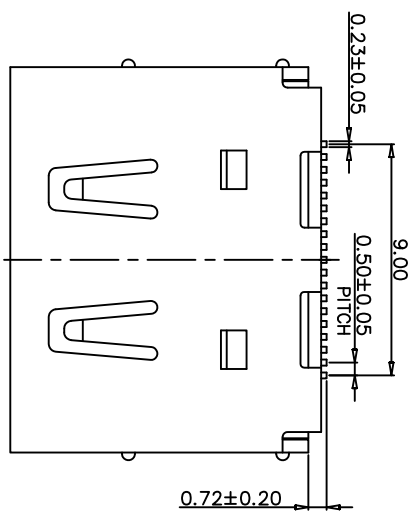
Contact us

Tel: +86-755-8981 8866 Fax: +86-755-8427 6832

Email & Skype: info@chipsmall.com Web: www.chipsmall.com

Address: A1208, Overseas Decoration Building, #122 Zhenhua RD., Futian, Shenzhen, China





NOTES:

1. MATERIAL:
HOUSING&COVER: THERMOPLASTIC HIGH-TEMP UL94V-0 COLOR:BLACK
CONTACT: COPPER ALLOY
SHELL: COPPER ALLOY&SPCC
2. FINISH:
CONTACT: Au SEE TABLE 1,
80u"~120u" Tin PLATE ON SOLDER TAIL AREA,
50u"~80u" Ni BASE--PLATE OVER ALL.
3. SHELL: Au G.F OR Ni 80u"~120u"
3. APPLIED TO IR SOLDERING PROCESS.
4. SPECIFICATION:
4.1: ELECTRICAL CHARACTERISTICS
CONTACT CURRENT RATING: 0.5A MIN.
ELECTRIC WITHSTANDING VOLTAGE: 300V AC
INSULATION RESISTANCE: a. UNAMITE 100MΩ MIN. AT 500V/DC
b. MATE 10MΩ MIN. AT 150V/DC
CONTACT RESISTANCE: 10mΩ MAX.
TEMPERATURE RANGE: -20°C TO +85°C
- 4.2: MECHANICAL:
INSERTION FORCE: 44.1N MAX.
WITHDRAWAL FORCE: 9.8N MIN. 39.2N MAX.
DURABILITY: 10,000 CYCLES

| | | | | | | | | | |
|--|-------|---------|------------------------|--------|------------|-------|-------|-------------------------------|------|
| 14/01/17 | Jody | | NEW DWG | | AO | | | | |
| DATE | DR.BY | ECN.NO. | DESCRIPTION | MARK | VER. | | | | |
| -TOLERANCES- UNLESS OTHERWISE SPECIFIED | | | <h1>Cnc Tech, LLC</h1> | | | | | | |
| X.X | ±0.38 | X.X° | | | | ±2° | APPD: | PRODUCT NO: 2000-1-2-30-00-BK | |
| X.XX | ±0.25 | X.XX° | ±1° | CHECK: | DATE | SCALE | UNIT | TYPE | PAGE |
| X.XXX | ±0.13 | X.XXX° | ±0.5° | DRAW: | 2014/01/17 | 1:1 | mm | Z | 1/1 |

TITLE: HD01 A Type Female 19P SMT with 4
DIP Tails with Ribbing, G/F, Black