



Chipsmall Limited consists of a professional team with an average of over 10 year of expertise in the distribution of electronic components. Based in Hongkong, we have already established firm and mutual-benefit business relationships with customers from,Europe,America and south Asia,supplying obsolete and hard-to-find components to meet their specific needs.

With the principle of “Quality Parts,Customers Priority,Honest Operation,and Considerate Service”,our business mainly focus on the distribution of electronic components. Line cards we deal with include Microchip,ALPS,ROHM,Xilinx,Pulse,ON,Everlight and Freescale. Main products comprise IC,Modules,Potentiometer,IC Socket,Relay,Connector.Our parts cover such applications as commercial,industrial, and automotives areas.

We are looking forward to setting up business relationship with you and hope to provide you with the best service and solution. Let us make a better world for our industry!



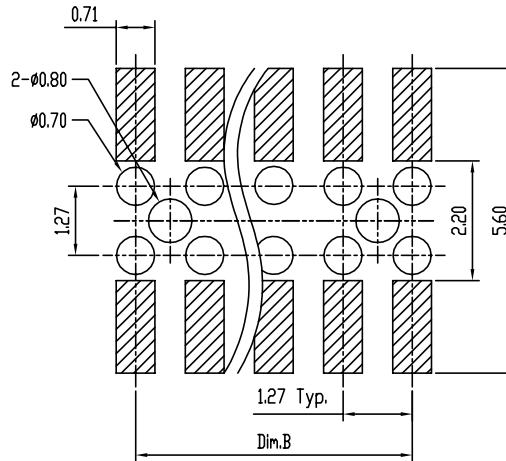
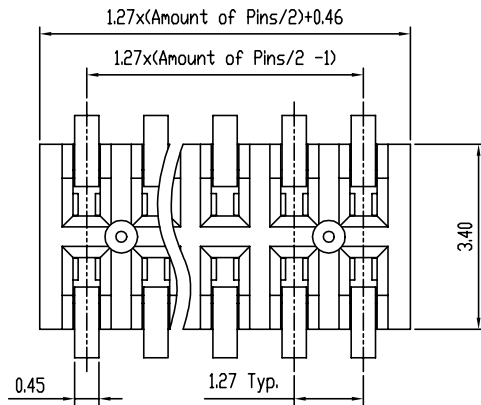
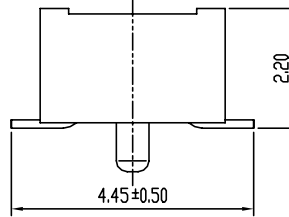
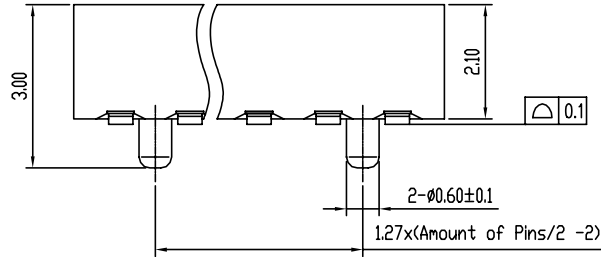
## Contact us

Tel: +86-755-8981 8866 Fax: +86-755-8427 6832

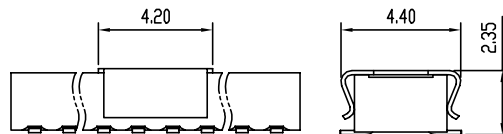
Email & Skype: info@chipsmall.com Web: www.chipsmall.com

Address: A1208, Overseas Decoration Building, #122 Zhenhua RD., Futian, Shenzhen, China





Recommended P.C.B. Layout  
Layout Tolerance = ± 0.05 mm



With Cap  
Scale 4:1

NOTE:

- MATERIAL,  
HOUSING: HIGH TEMP PLASTIC, UL94-V0, BLACK  
TERMINAL: COPPER ALLOY, T=0.15MM  
CAP: STAINLESS STEEL, T=0.1MM
- FINISH:  
TERMINAL: GOLD AT CONTACT,  
G/F OVER 1.27um(50u") MIN Ni OVER ALL
- SPEC.:  
PRODUCT SPEC: GS-12-629  
PACKING SPEC: GS-14-1420
- THE HSG. WILL WITHSTAND EXPOSURE TO 260°C PEAK TEMP. FOR 10 SEC. IN A CONVECTION INFRA-RED OR VAPOR PHASE REFLOW.
- PRODUCT NUMBERING:  
20021323 - X 0 0 XX X X LF

LEAD FREE

PLATING:

- 1: GOLD FLASH ALL OVER
- 4: 0.25um(10U") GOLD AT CONTACT
- 8: 0.76um(30U") GOLD AT CONTACT
- 9: 1u" GOLD OVER 30u" PdNi AT CONTACT

PACKING

- D: TUBE + CAP
- T: TUBE
- C: REEL + CAP (8, 10, 20, 22, 30, 40, 42, 70P)

PIN COUNT

- 4, 6, 8, ... , 80
- ( EVERY EVEN PIN )
- 0: WITHOUT POST
- 1: WITH POST

mat'l. code		surface		tolerance		projection		product family	
		ISO1302 ✓		ISO1101 ISO406		①		MINITEK	
l	tr	ec	no	dr	date	tolerances unless otherwise specified		title	
A	T09-1117	S.LIN	09/15/09	angle	0.1	0.X±0.38	MM	1.27X1.27MM BTB RECEPTACLE	
B	T10-0020	S.LIN	01/20/10	0°±2'	0.1	0.XX±0.25	MM	SMT BOTTOM ENTRY	
C	T10-0120	S.LIN	07/30/10	0°±2'	0.1	0.XXX±0.10	scale 8:1		
D	ELXT004402	S.LIN	07/11/11	dr	STERLING LIN	09/15/09		dwg no	sheet 1 of 1
E	BX-N-010370	ZK	01/18/12	eng	STERLING LIN	09/15/09	FCI	size	
F	BX-N-011532	ZK	05/07/12	chr	GRAY HSIEH	09/15/09		20021323	
G	BX-N-011756	ZK	05/28/12	appd	JOSEPH	09/15/09		A4	
sheet index		revising sheet		G		type		Product Customer Drawing	