



Chipsmall Limited consists of a professional team with an average of over 10 year of expertise in the distribution of electronic components. Based in Hongkong, we have already established firm and mutual-benefit business relationships with customers from,Europe,America and south Asia,supplying obsolete and hard-to-find components to meet their specific needs.

With the principle of “Quality Parts,Customers Priority,Honest Operation,and Considerate Service”,our business mainly focus on the distribution of electronic components. Line cards we deal with include Microchip,ALPS,ROHM,Xilinx,Pulse,ON,Everlight and Freescale. Main products comprise IC,Modules,Potentiometer,IC Socket,Relay,Connector.Our parts cover such applications as commercial,industrial, and automotives areas.

We are looking forward to setting up business relationship with you and hope to provide you with the best service and solution. Let us make a better world for our industry!



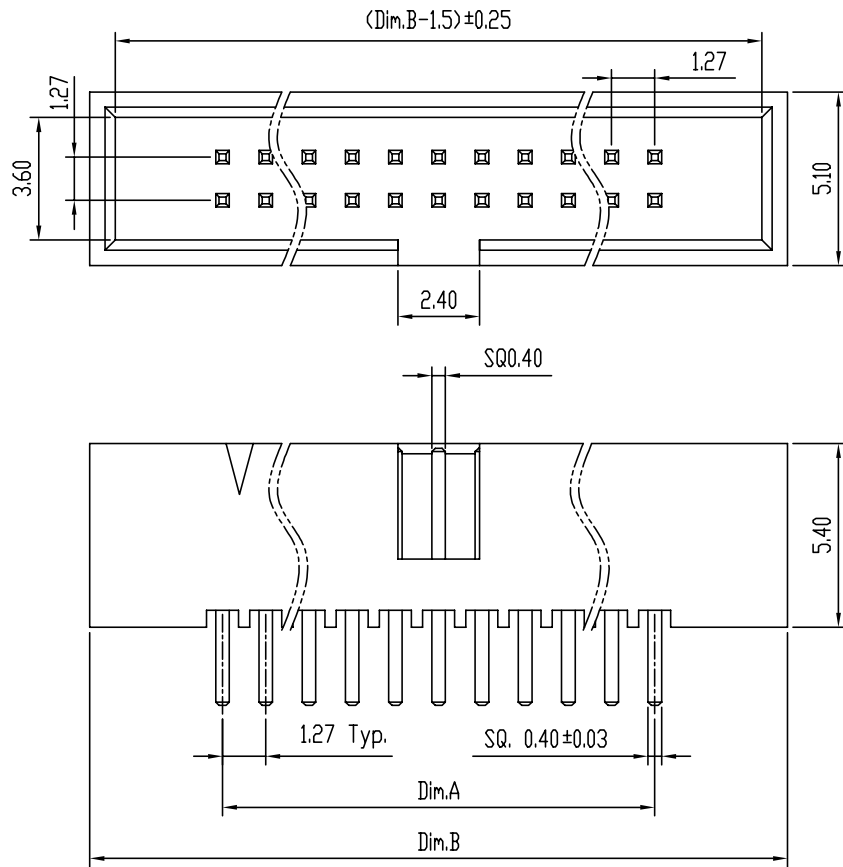
Contact us

Tel: +86-755-8981 8866 Fax: +86-755-8427 6832

Email & Skype: info@chipsmall.com Web: www.chipsmall.com

Address: A1208, Overseas Decoration Building, #122 Zhenhua RD., Futian, Shenzhen, China





NOTE:

- MATERIAL:
HOUSING: HIGH TEMP PLASTIC, UL94-V0, BLACK
TERMINAL: COPPER ALLOY, SQ=0.40±0.03MM
- FINISH:
TERMINAL: GOLD AT CONTACT,
G/F OVER 1um(40u")MIN Ni OVER ALL
- SPEC.:
PRODUCT SPEC: GS-12-629
PACKING SPEC: GS-14-1420
- THE HSG. WILL WITHSTAND EXPOSURE TO 260C PEAK TEMP. FOR 5 SEC. IN A WAVE SOLDER APPLICATION WITH A PCB.
- PRODUCT NUMBERING:
20021511 - 0 0 0 XX X X L F

- LEAD FREE
- PLATING:
1: GOLD FLASH ALL OVER
4: 0.25um(10U") GOLD AT CONTACT
8: 0.76um(30U") GOLD AT CONTACT
9: 1u" GOLD OVER 30u" PdNi AT CONTACT
- PACKING
- T: TUBE
- PIN COUNT
SEE TABLE 1

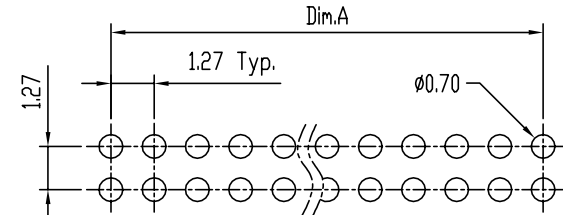
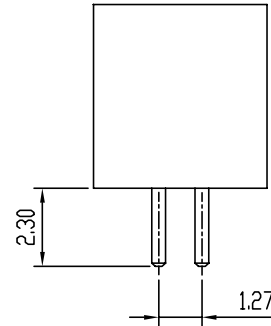


TABLE 1 ,DIM INFORMATION

DASH No.	Dim.	Amount of Pins	Dim.A	Dim.B
-000 06 XX LF	06	6	2.54	10.11
-000 10 XX LF	10	10	5.08	12.65
-000 12 XX LF	12	12	6.35	13.92
-000 14 XX LF	14	14	7.62	15.19
-000 16 XX LF	16	16	8.89	16.46
-000 20 XX LF	20	20	11.43	19.00
-000 26 XX LF	26	26	15.24	22.81
-000 30 XX LF	30	30	17.78	25.35

DASH No.	Dim.	Amount of Pins	Dim.A	Dim.B
-000 34 XX LF	34	34	20.32	27.89
-000 40 XX LF	40	40	24.13	31.70
-000 44 XX LF	44	44	26.67	34.24
-000 50 XX LF	50	50	30.48	38.05
-000 60 XX LF	60	60	36.83	44.40
-000 64 XX LF	64	64	39.37	46.94
-000 68 XX LF	68	68	41.91	49.48
-000 80 XX LF	80	80	49.53	57.10
-000 A0 XX LF	100	100	62.23	69.80

Recommended P.C.B. Layout
Layout Tolerance = ± 0.05 mm

mat'l. code	surface ISO1302 ✓	tolerance ISO1101 ISO406	projection MM	product family MINITEK
l trechn nodr	date	tolerances unless otherwise specified	MM	1.27X1.27MM BTB HEADER SHROUDED VERTICAL TH
A T09-1117 S.LIN	09/15/09	0.X±0.38	scale 5:1	dwg no 20021511 sheet 1 of 1 size A4
B T10-0022 S.LIN	01/20/10	0.XX±0.25		type Product Customer Drawing
C BX-N-010362 ZK	01/16/12	0.XXX±0.10		
dr	STERLING LIN	09/15/09		
eng	STERLING LIN	09/15/09		
chr	GRAY HSIEH	09/15/09		
appd	JOSEPH	09/15/09		
sheet index	revision sheet 1			