



Chipsmall Limited consists of a professional team with an average of over 10 year of expertise in the distribution of electronic components. Based in Hongkong, we have already established firm and mutual-benefit business relationships with customers from,Europe,America and south Asia,supplying obsolete and hard-to-find components to meet their specific needs.

With the principle of "Quality Parts,Customers Priority,Honest Operation,and Considerate Service",our business mainly focus on the distribution of electronic components. Line cards we deal with include Microchip,ALPS,ROHM,Xilinx,Pulse,ON,Everlight and Freescale. Main products comprise IC,Modules,Potentiometer,IC Socket,Relay,Connector.Our parts cover such applications as commercial,industrial, and automotives areas.

We are looking forward to setting up business relationship with you and hope to provide you with the best service and solution. Let us make a better world for our industry!



Contact us

Tel: +86-755-8981 8866 Fax: +86-755-8427 6832

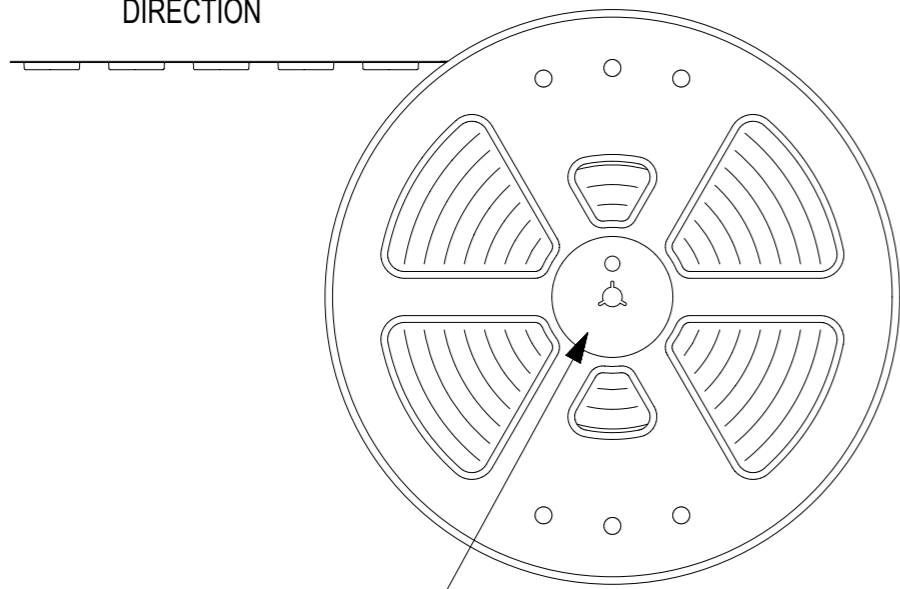
Email & Skype: info@chipsmall.com Web: www.chipsmall.com

Address: A1208, Overseas Decoration Building, #122 Zhenhua RD., Futian, Shenzhen, China

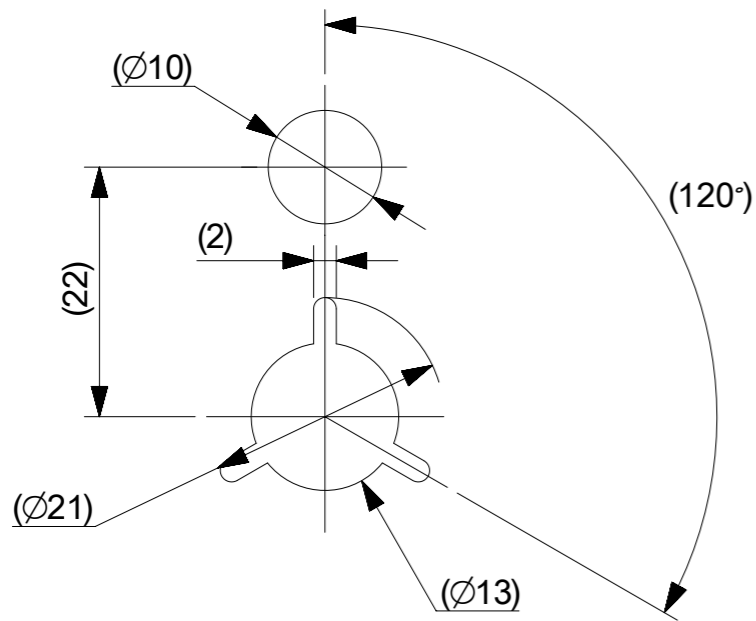
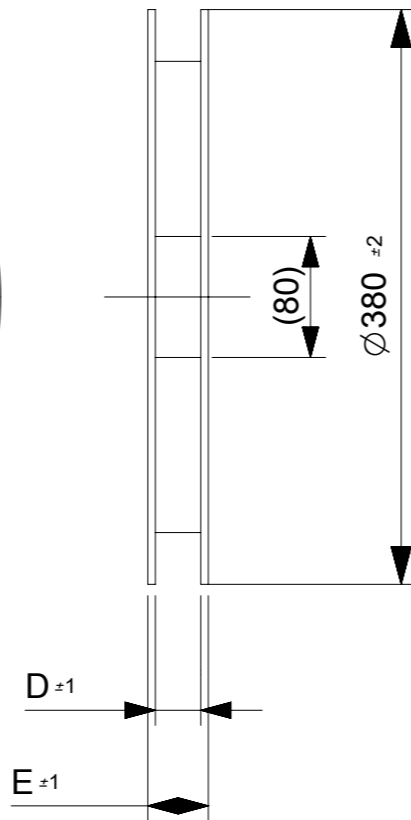


引き出し方向

PULL OUT DIRECTION



"E"



DETAIL "E"

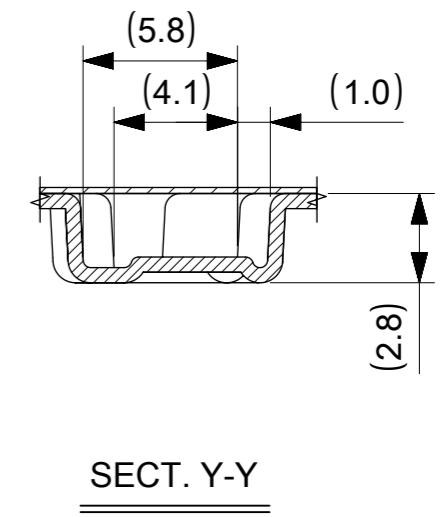
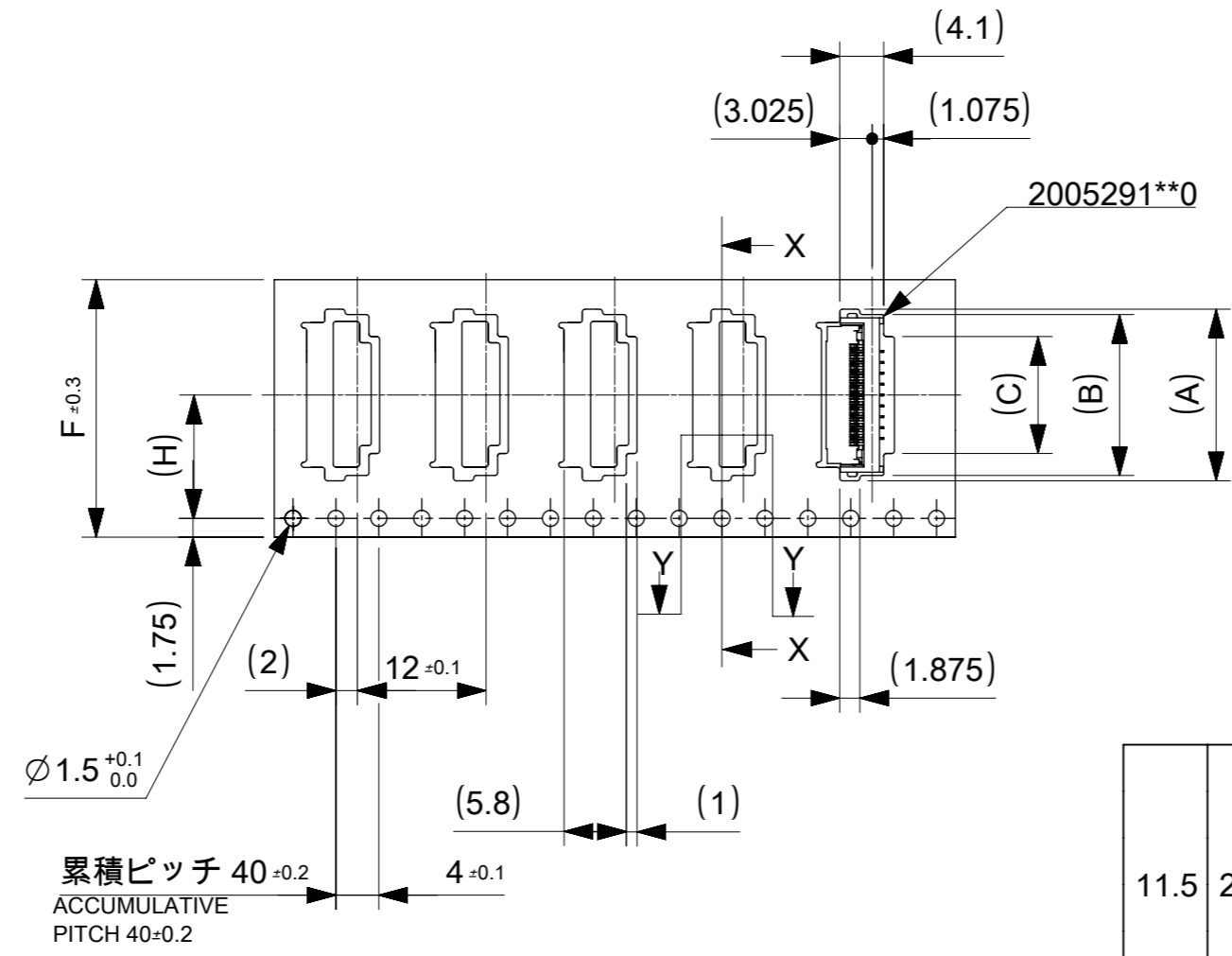
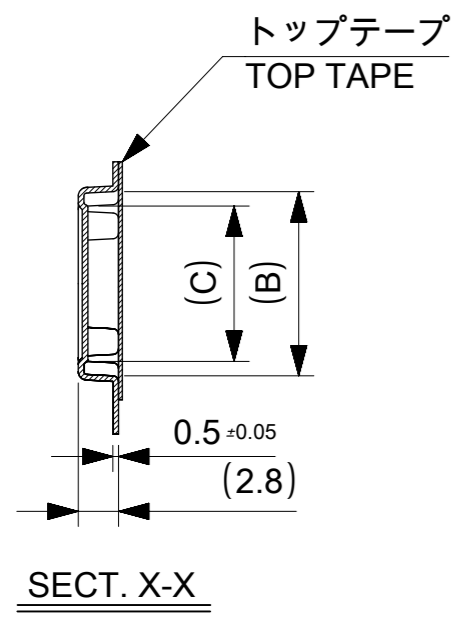
NOTES

- 梱包数量 : 3000個 / リール
NUMBER OF CONNECTORS : 3000 PCS/REEL.
 - リードテープ長さ
LEAD TAPE LENGTH
-
- カバーテープの剥離強度については、IEC60286-3に準拠。
COVER TAPE PEEL FORCE IS DEFINED BY IEC 60286-3.
 - 製品詳細寸法については、図面 2005291000-000を参照下さい。
FOR DIMENSIONS OF PRODUCT, REFER TO 2005291000-000.
 - 材料 MATERIAL
キャリアテープ : ポリスチレン
CARRIER TAPE : POLYSTYRENE
トップテープ : ポリエチレンテレフタレート、ポリエチレン
TOP TAPE : POLYETHYLENE TEREPHTHALATE, POLYETHYLENE
リール : ポリスチレン<リサイクル材を含む>
 - ELV及びRoHS適合品 ELV AND RoHS COMPLIANT.

THIS DRAWING CONTAINS INFORMATION THAT IS PROPRIETARY TO MOLEX ELECTRONIC TECHNOLOGIES, LLC AND SHOULD NOT BE USED WITHOUT WRITTEN PERMISSION

REVISED	EC NO: 103009	2016/02/09	GENERAL TOLERANCES (UNLESS SPECIFIED)	DIMENSION UNITS	SCALE	molex			
	DRWN: MTAKAHASHI04	2016/02/19	ANGULAR TOL ± 1.0 °	MM	2:1				
	CHK'D: KTAKAHASHI	2016/02/19	4 PLACES ± 0.05	DRWN BY	DATE	PRODUCT CUSTOMER DRAWING			
	APPR: TKUSUHARA01	2016/02/19	3 PLACES ± 0.1	MTAKAHASHI04	2015/12/24				
		2 PLACES ± 0.2	CHK'D BY	DATE	DOCUMENT NUMBER DOC TYPE DOC PART SHEET NUMBER 2005290000 PSD 000 1 OF 2				
		1 PLACE ± 0.2	YNOGAWA	2015/12/25					DRAWING SIZE THIRD ANGLE PROJECTION A3
		0 PLACES ± 0.2	APPR BY	DATE	DRAFT WHERE APPLICABLE MUST REMAIN WITHIN DIMENSIONS				

引き出し方向
PULL OUT
DIRECTION



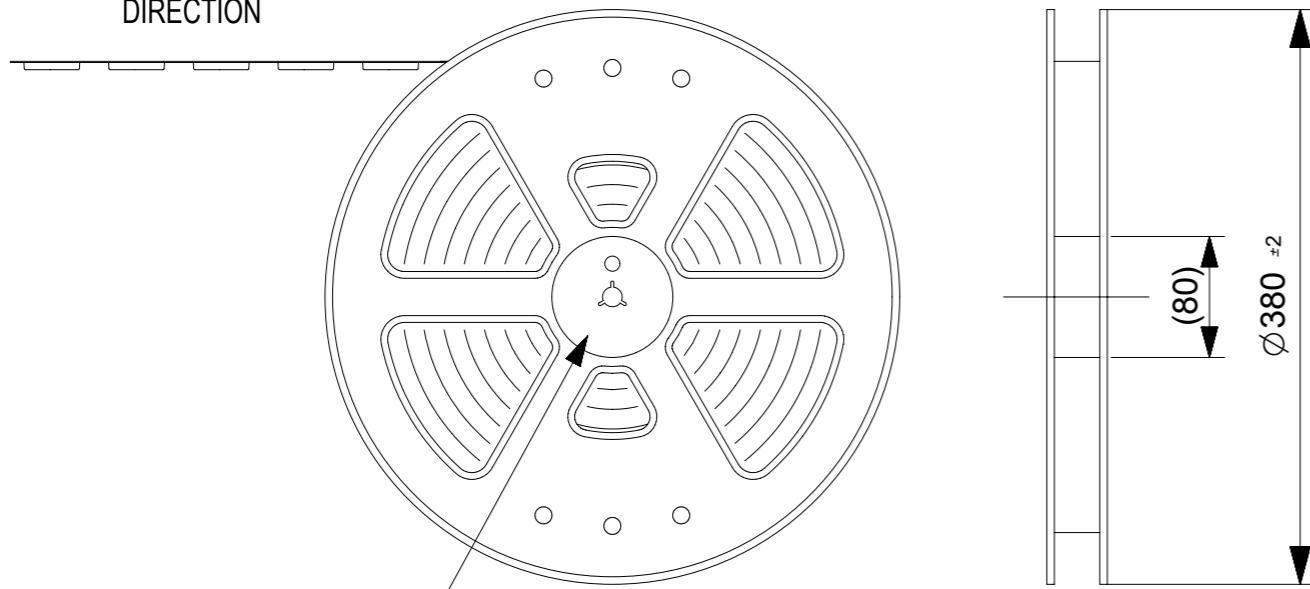
11.5	24	29.4	25.4	10.4	14.4	15.5	2005290090	9
				9.4	13.4	14.5	2005290080	8
				8.4	12.4	13.5	2005290070	7
				7.4	11.4	12.5	2005290060	6
				6.4	10.4	11.5	2005290050	5
				5.4	9.4	10.5	2005290040	4
H	F	E	D	C	B	A	EMBOSSED PACKAGE オーダー番号 ORDER NO.	Ckt
CONNECTER NO. 2005291**0								

THIS DRAWING CONTAINS INFORMATION THAT IS PROPRIETARY TO MOLEX ELECTRONIC TECHNOLOGIES, LLC AND SHOULD NOT BE USED WITHOUT WRITTEN PERMISSION

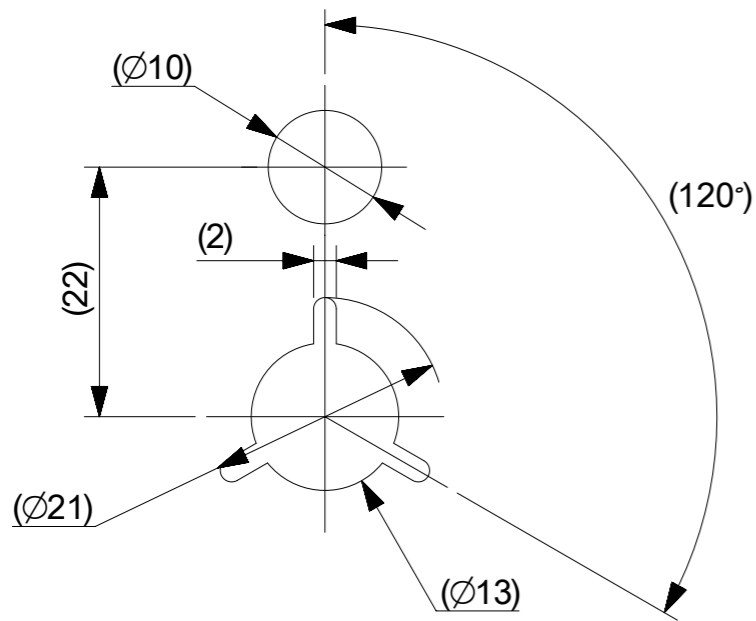
REVISED EC NO: 103009 DRWN: MTAKAHASHI04 CHK'D: KTAKAHASHI APPR: TKUSUHARA01	2016/02/09	GENERAL TOLERANCES (UNLESS SPECIFIED)	DIMENSION UNITS	SCALE	<p>1.0 FPC ZIF BTM CONT EMBT PKG</p> <p>PRODUCT CUSTOMER DRAWING</p>			
	2016/02/19	ANGULAR TOL ± 1.0 °	MM	1:1				
	2016/02/19	4 PLACES ± 0.05	DRWN BY	DATE				
		3 PLACES ± 0.1	MTAKAHASHI04	2015/12/24				
		2 PLACES ± 0.2	CHK'D BY	DATE				
	1 PLACE ± 0.2	KTAKAHASHI	2015/12/25					
	0 PLACES ± 0.2	APPR BY	DATE					
		YNOGAWA	2016/01/04					
		DRAFT WHERE APPLICABLE MUST REMAIN WITHIN DIMENSIONS	DRAWING SIZE	THIRD ANGLE PROJECTION	SERIES	MATERIAL NUMBER	CUSTOMER	
			A3		200529	SEE CHART	GENERAL	
					DOCUMENT NUMBER	DOC TYPE	DOC PART	SHEET NUMBER
					2005290000	PSD	000	2 OF 2

引き出し方向

PULL OUT DIRECTION



"E"



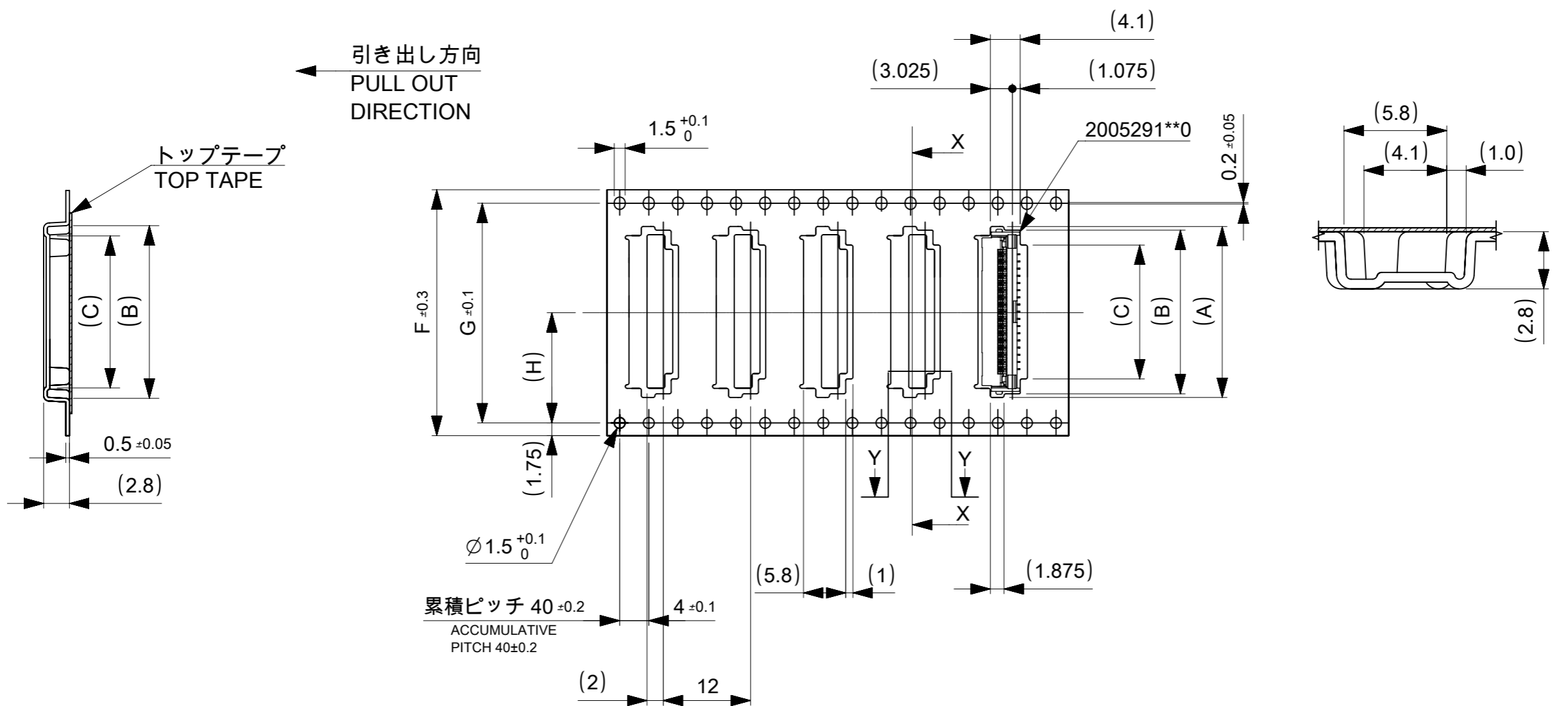
DETAIL "E"

NOTES

- 梱包数量 : 3000個 / リール
NUMBER OF CONNECTORS : 3000 PCS/REEL.
 - リードテープ長さ
LEAD TAPE LENGTH
-
- カバーテープの剥離強度については、IEC60286-3に準拠。
COVER TAPE PEEL FORCE IS DEFINED BY IEC 60286-3.
 - 製品詳細寸法については、図面 2005291006-000を参照下さい。
FOR DIMENSIONS OF PRODUCT, REFER TO 2005291006-000.
 - 材料 MATERIAL
キャリアテープ : ポリスチレン
CARRIER TAPE : POLYSTYRENE
トップテープ : ポリエチレンテレフタレート、ポリエチレン
TOP TAPE : POLYETHYLENE TEREPHTHALATE, POLYETHYLENE
リール : ポリスチレン<リサイクル材を含む>
 - ELV及びRoHS適合品 ELV AND RoHS COMPLIANT.

THIS DRAWING CONTAINS INFORMATION THAT IS PROPRIETARY TO MOLEX ELECTRONIC TECHNOLOGIES, LLC AND SHOULD NOT BE USED WITHOUT WRITTEN PERMISSION

REVISED	EC NO: 103009	2016/02/09	GENERAL TOLERANCES (UNLESS SPECIFIED)	DIMENSION UNITS	SCALE	molex			
	DRWN: MTAKAHASHI04	2016/02/19	ANGULAR TOL ± 1.0 °	MM	2:1				
	CHK'D: KTAKAHASHI	2016/02/19	4 PLACES ± 0.05	DRWN BY	DATE	1.0 FPC ZIF BTM CONT EMBT PKG			
	APPR: TKUSUHARA01	2016/02/19	3 PLACES ± 0.1	MTAKAHASHI04	2015/12/24				
			2 PLACES ± 0.2	CHK'D BY	DATE	PRODUCT CUSTOMER DRAWING			
		1 PLACE ± 0.2	KTAKAHASHI	2015/12/25					
		0 PLACES ± 0.2	APPR BY	DATE	SERIES MATERIAL NUMBER CUSTOMER				
			YNOGAWA	2016/01/04					200529
		DRAFT WHERE APPLICABLE MUST REMAIN WITHIN DIMENSIONS	DRAWING SIZE	THIRD ANGLE PROJECTION	DOCUMENT NUMBER DOC TYPE DOC PART SHEET NUMBER				
			A3		2005290006 PSD 000 1 OF 2				

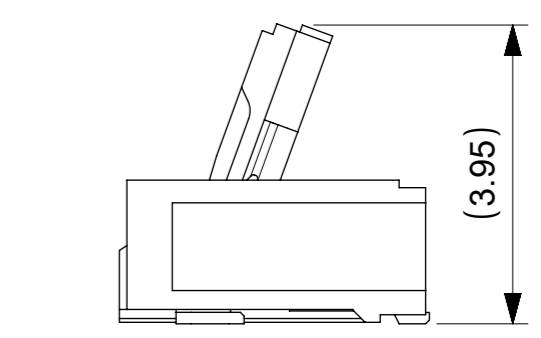
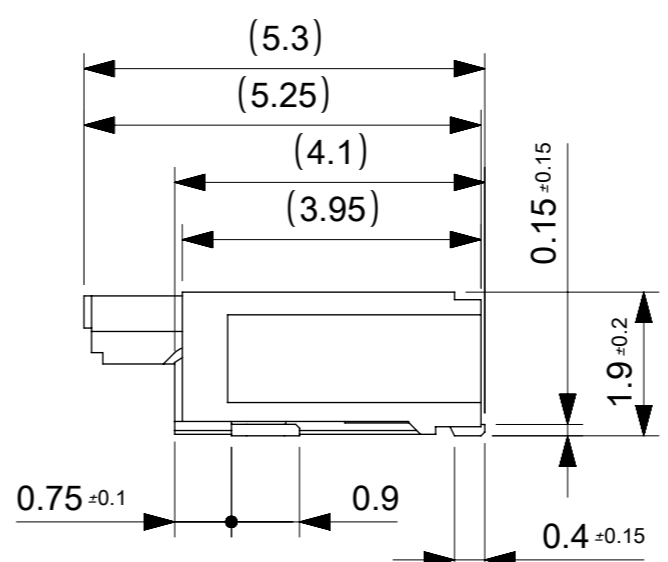
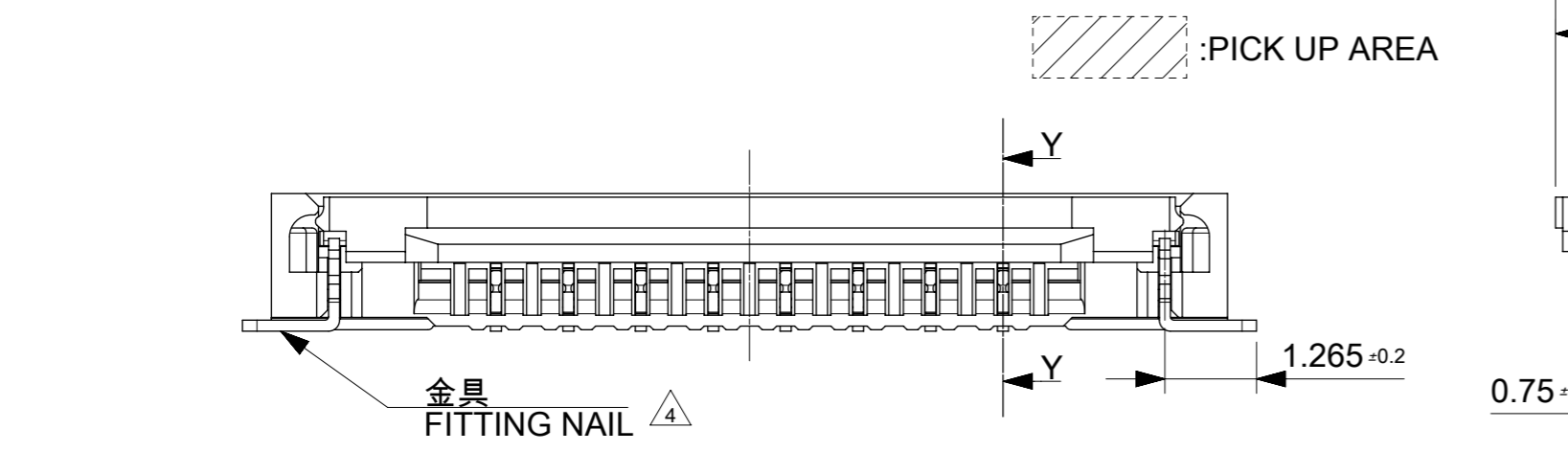
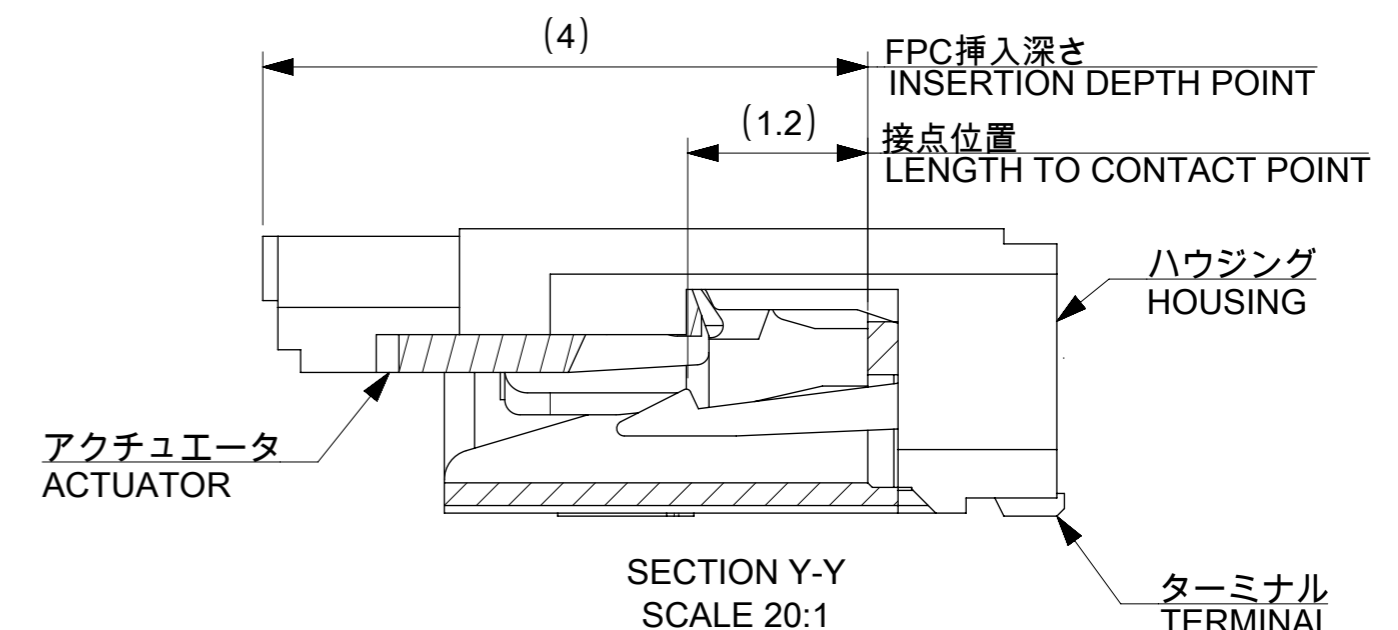
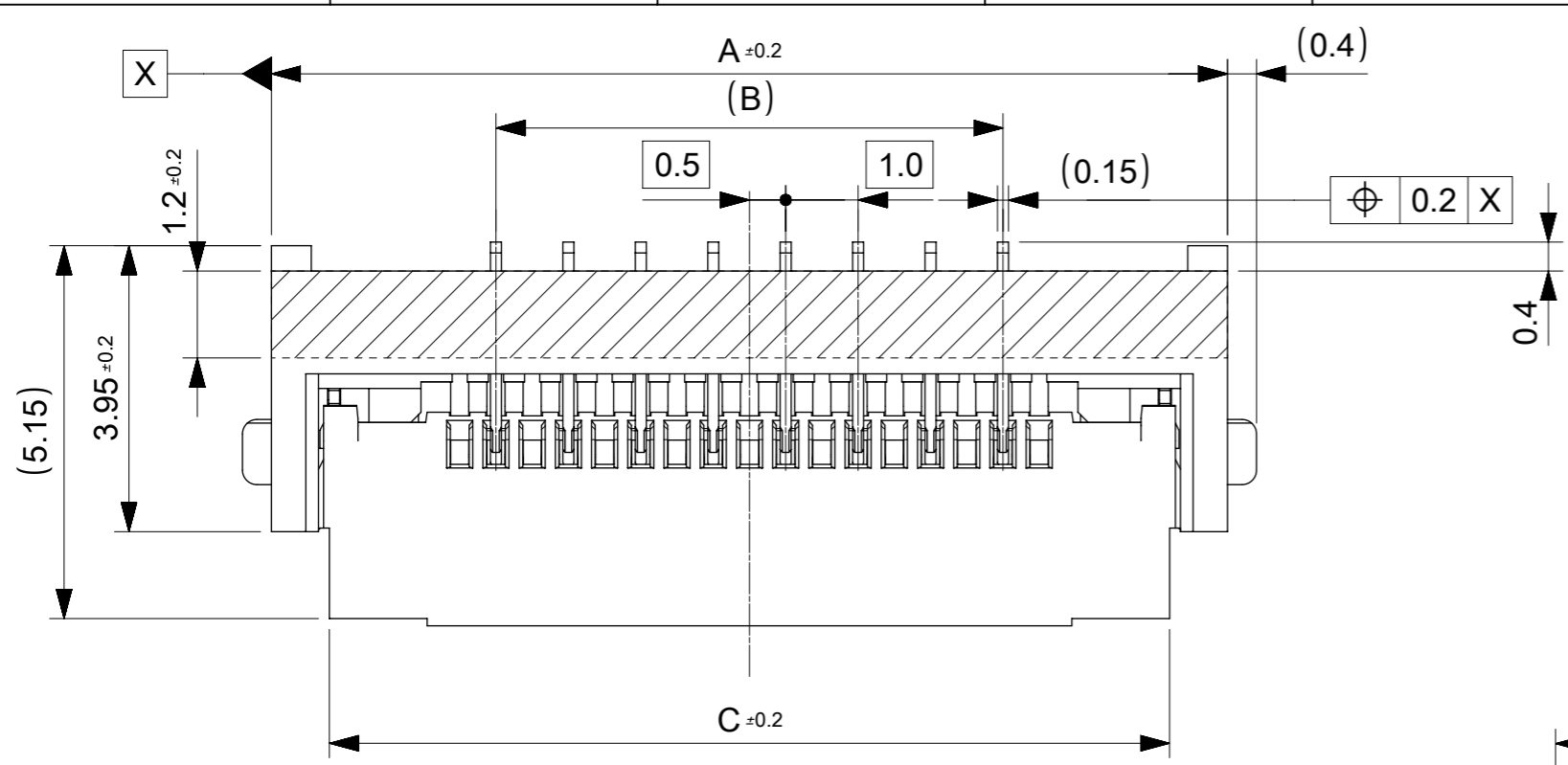


20.2	40.4	44	49.4	45.4	23.4	27.4	28.5	2005290220	22
					18.4	22.4	23.5	2005290170	17
H	G	F	E	D	C	B	A	EMBOSSED PACKAGE	Ckt
								オーダー番号 ORDER NO.	

CONNECTOR SERIES NO. 2005291**0

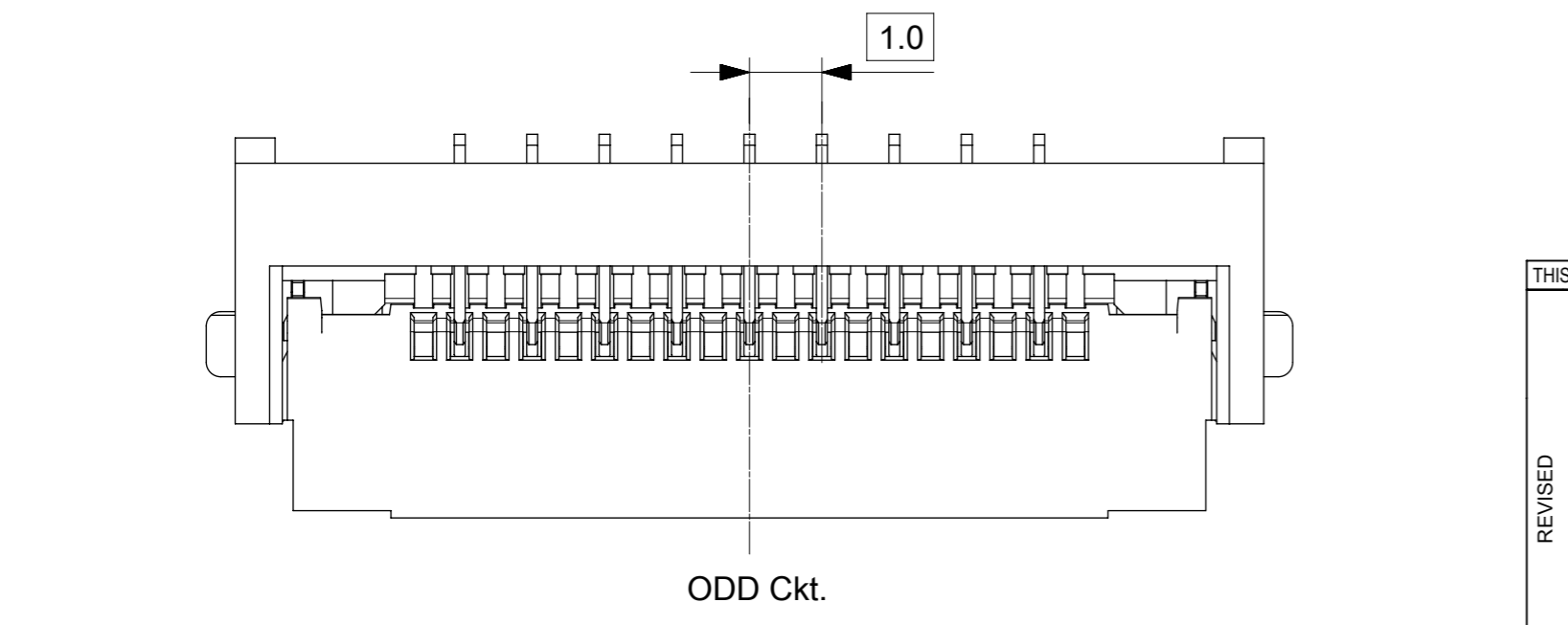
THIS DRAWING CONTAINS INFORMATION THAT IS PROPRIETARY TO MOLEX ELECTRONIC TECHNOLOGIES, LLC AND SHOULD NOT BE USED WITHOUT WRITTEN PERMISSION

EC NO: 103009 DRWN: MTAKAHASHI04 CHK'D: KTAKAHASHI APPR: TKUSUHARA01	2016/02/09	2016/02/19	2016/02/19	GENERAL TOLERANCES (UNLESS SPECIFIED) ANGULAR TOL ± 1.0 ° 4 PLACES ± 0.05 3 PLACES ± 0.1 2 PLACES ± 0.2 1 PLACE ± 0.2 0 PLACES ± 0.2 DRAFT WHERE APPLICABLE MUST REMAIN WITHIN DIMENSIONS	DIMENSION UNITS	SCALE				
	REVISED				MM	2:1				
					DRWN BY	DATE		MTAKAHASHI04 2015/12/24		
					CHK'D BY	DATE		KTAKAHASHI 2015/12/25		
					APPR BY	DATE		YNOGAWA 2016/01/04		
			DRAWING SIZE	THIRD ANGLE PROJECTION	A3		PRODUCT CUSTOMER DRAWING			
							SERIES	MATERIAL NUMBER	CUSTOMER	
							200529	SEE CHART	GENERAL	
							DOCUMENT NUMBER	DOC TYPE	DOC PART	SHEET NUMBER
							2005290006	PSD	000	2 OF 2



12.6	8.0	14.2	2005290090	9
11.6	7.0	13.2	2005290080	8
10.6	6.0	12.2	2005290070	7
9.6	5.0	11.2	2005290060	6
8.6	4.0	10.2	2005290050	5
7.6	3.0	9.2	2005290040	4
C	B	A	EMBOSSED PACKAGE オーダー番号 ORDER NO.	Ckt

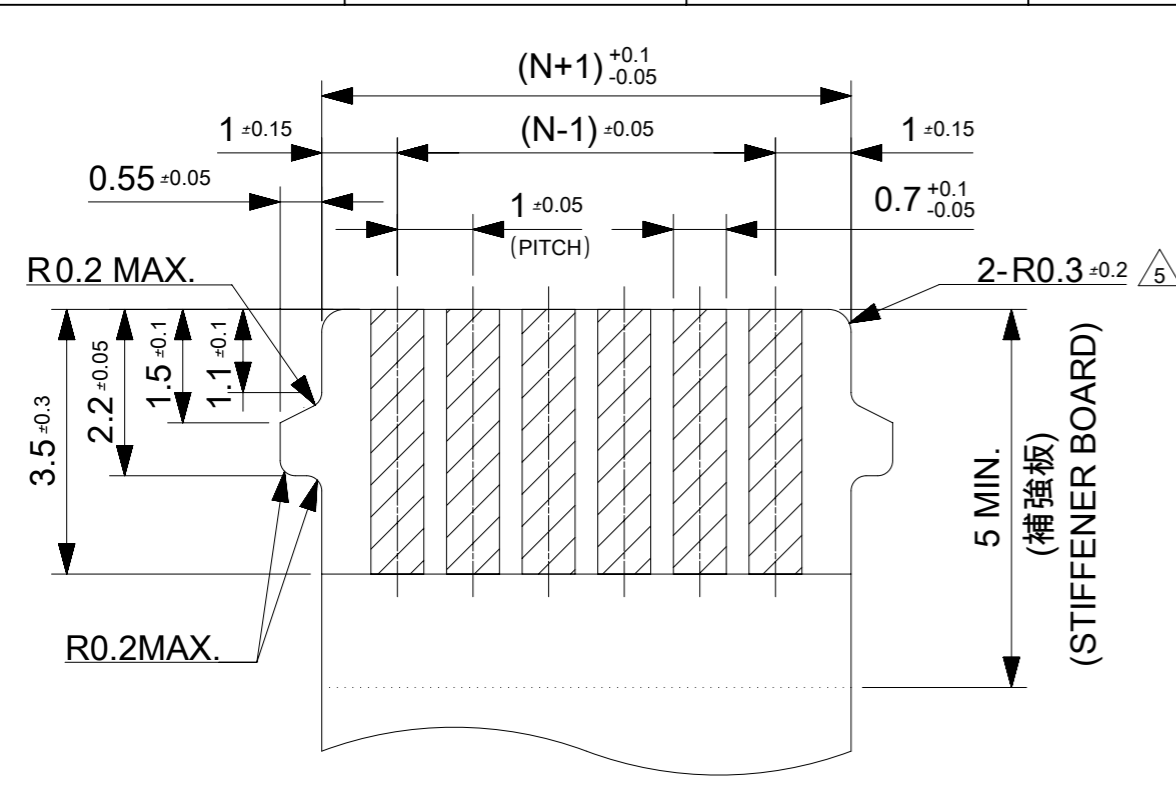
CONNECTOR SERIES NO.2005291**0



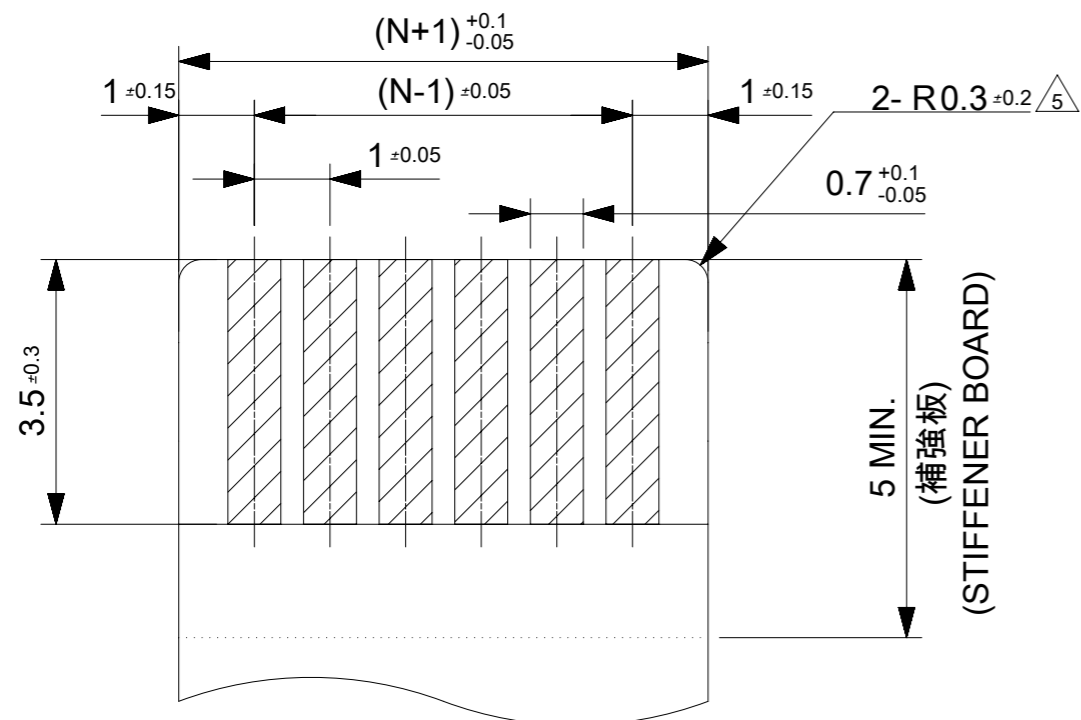
THIS DRAWING CONTAINS INFORMATION THAT IS PROPRIETARY TO MOLEX ELECTRONIC TECHNOLOGIES, LLC AND SHOULD NOT BE USED WITHOUT WRITTEN PERMISSION

REVISED	2016/02/09	GENERAL TOLERANCES (UNLESS SPECIFIED)	DIMENSION UNITS	SCALE				
	2016/02/19		MM	10:1				
	2016/02/19		ANGULAR TOL ± 1.0 °	DRWN BY		DATE		
	4 PLACES ± 0.05		MTAKAHASHI04	2015/12/24				
EC NO: 103009	DRWN: MTAKAHASHI04	DRAFT WHERE APPLICABLE MUST REMAIN WITHIN DIMENSIONS	3 PLACES ± 0.1	CHK'D BY	DATE			
	CHK'D: KTAKAHASHI		2 PLACES ± 0.2	KTAKAHASHI	2015/12/25			
	1 PLACE ± 0.2		APPR BY	DATE	PRODUCT CUSTOMER DRAWING			
	0 PLACES ± 0.2		YNOGAWA	2016/01/04	SERIES	MATERIAL NUMBER	CUSTOMER	
B	REV		DRAWING SIZE	THIRD ANGLE PROJECTION	200529	SEE CHART	GENERAL	
			A3		DOCUMENT NUMBER	DOC TYPE	DOC PART	SHEET NUMBER
					2005291000	PSD	000	1 OF 3

適合FPC/FFC推奨寸法
APPLICABLE FPC/FFC
RECOMMENDED DIMENSION



耳無し適合FPC/FFC推奨寸法
APPLICABLE NON-TAB FPC/FFC
RECOMMENDED DIMENSION



補強板：ポリイミド
REINFORCE BOARD: POLYIMIDE

熱硬化接着剤
THERMOSETTING ADHESIVE

ベースフィルム：ポリイミド(25μm)
BASE FILM: POLYIMIDE(25μm)

熱硬化接着剤
THERMOSETTING ADHESIVE

導体部：銅箔(35μm)
CONDUCTOR: COPPER FOIL (35μm)

熱硬化接着剤
THERMOSETTING ADHESIVE

カバーレイ：ポリイミド(25μm)
COVER FILM: POLYIMIDE(25μm)

補強板：ポリエステル系
REINFORCE BOARD: PET

接着剤(難燃ポリエステル系)
ADHESIVE (FLAME-RETARDANT
POLYESTER ADHESIVE)

絶縁テープ：ポリエステル系(25μm)
INSULATING FILM: PET(25μm)

接着剤(難燃ポリエステル系)
ADHESIVE (FLAME-RETARDANT
POLYESTER ADHESIVE)

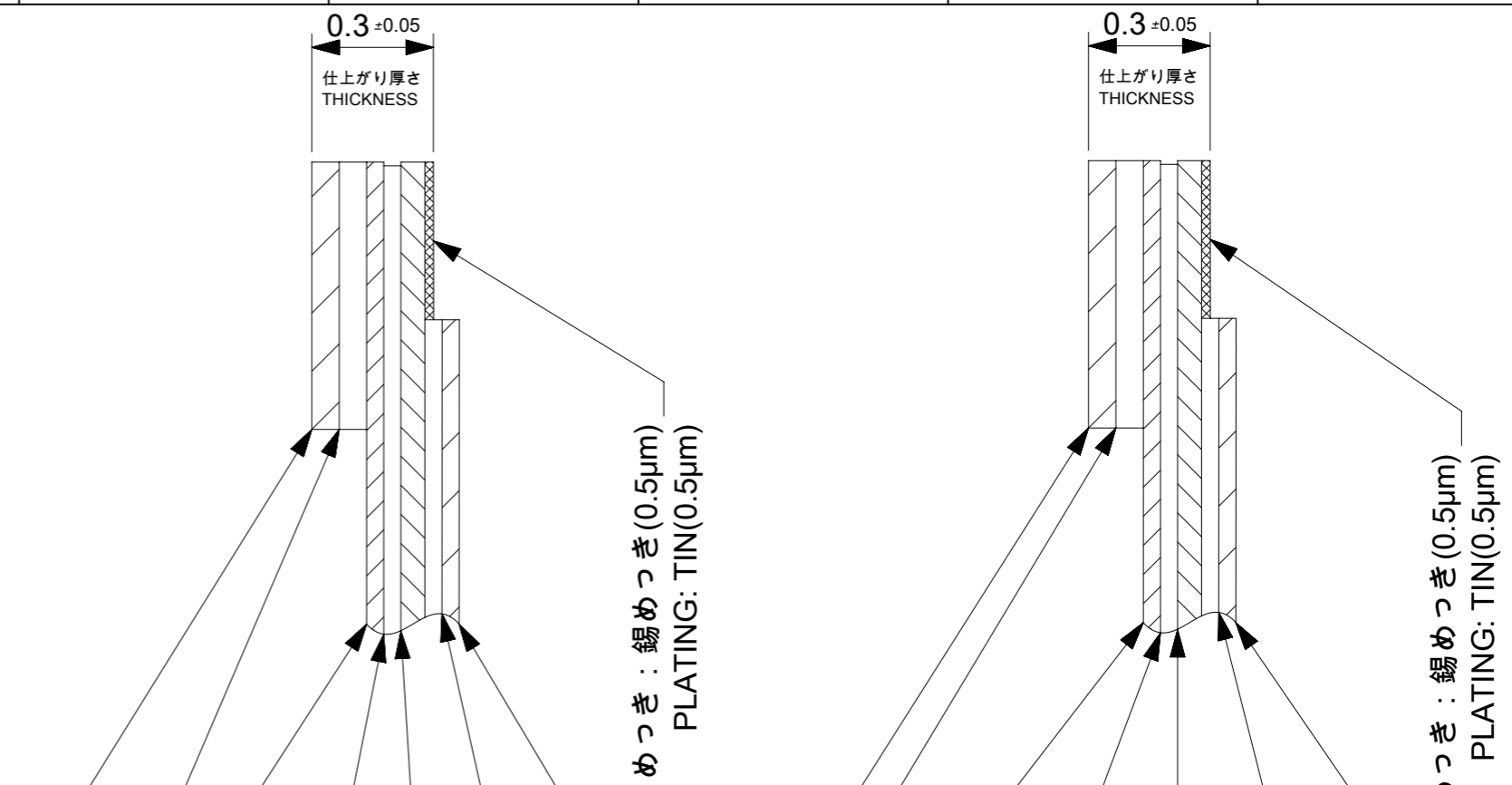
導体部：銅箔(35μmか50μm)
CONDUCTOR: COPPER FOIL (35μm or 50μm)

接着剤(難燃ポリエステル系)
ADHESIVE (FLAME-RETARDANT
POLYESTER ADHESIVE)

絶縁テープ：ポリエステル系(25μm)
INSULATING FILM: PET(25μm)

FPC構成推奨仕様
STRUCTURE OF FPC

FFC構成推奨仕様
STRUCTURE OF FFC



THIS DRAWING CONTAINS INFORMATION THAT IS PROPRIETARY TO MOLEX ELECTRONIC TECHNOLOGIES, LLC AND SHOULD NOT BE USED WITHOUT WRITTEN PERMISSION

REVISED EC NO: 103009 DRWN: MTAKAHASHI04 CHK'D: KTAKAHASHI APP: TKUSUHARA01	2016/02/09	2016/02/19	2016/02/19	GENERAL TOLERANCES (UNLESS SPECIFIED)	DIMENSION UNITS	SCALE		
	4 PLACES	± 0.05	MTAKAHASHI04		DATE	MM		##
	3 PLACES	± 0.1	CHK'D BY		DATE	DRWN BY		
	2 PLACES	± 0.2	KTAKAHASHI		2015/12/25	DATE		DATE
	1 PLACE	± 0.2	APP'R BY		YNOGAWA	DATE		DATE
0 PLACES	± 0.2	DRAFT WHERE APPLICABLE MUST REMAIN WITHIN DIMENSIONS		DRAWING SIZE	THIRD ANGLE PROJECTION	PRODUCT CUSTOMER DRAWING		
					A3	SERIES		
						MATERIAL NUMBER		
						CUSTOMER		
						200529	SEE SHEET 1	GENERAL
						DOCUMENT NUMBER		DOC TYPE
						2005291000		PSD
						DOC PART		SHEET NUMBER
						000		2 OF 3

注記 NOTES

1.使用材料 MATERIAL

ハウジング :液晶ポリマー ガラス充填、UL94V-0(ベージュ)
 HOUSING LIQUID CRYSTAL POLYMER GLASS FILLED, UL94V-0(BEIGE)
 アクチュエータ :ポリアミド ガラス充填、UL94V-0(黒)
 ACTUATOR POLYAMIDE GLASS FILLED, UL94V-0(BLACK)
 ターミナル :リン青銅(t=0.15)
 TERMINAL PHOSPHOR BRONZE
 金具 :リン青銅(t=0.15)
 FITTING NAIL PHOSPHOR BRONZE

2.めっき仕様 PLATING

ターミナル TERMINAL
 錫銀ビスマスめっき (1.0µm以上)
 下地:ニッケルめっき (1.0µm以上)
 TINSILVER BISMUTH PLATING (1.0 MICROMETER MINIMUM)
 UNDERPLATE : NICKEL OVERALL (1.0 MICROMETER MINIMUM)
 金具 FITTING NAIL
 錫めっき(1.0µm以上)
 下地:ニッケルめっき (1.0µm以上)
 TIN PLATING (1.0 MICROMETER MIN.)
 UNDER PLATING : NICKEL PLATING (1.0 MICROMETER MIN.)

3.エンボステープ梱包時は、アクチュエータが閉じた状態とする。
 IN THE PACKAGE, ACTUATOR OF PART SHOULD BE CLOSED.

パターン剥離止め用金具

4. FITTING NAIL FOR PREVENTION OF PEELING OF P.C.B. PATTERN.

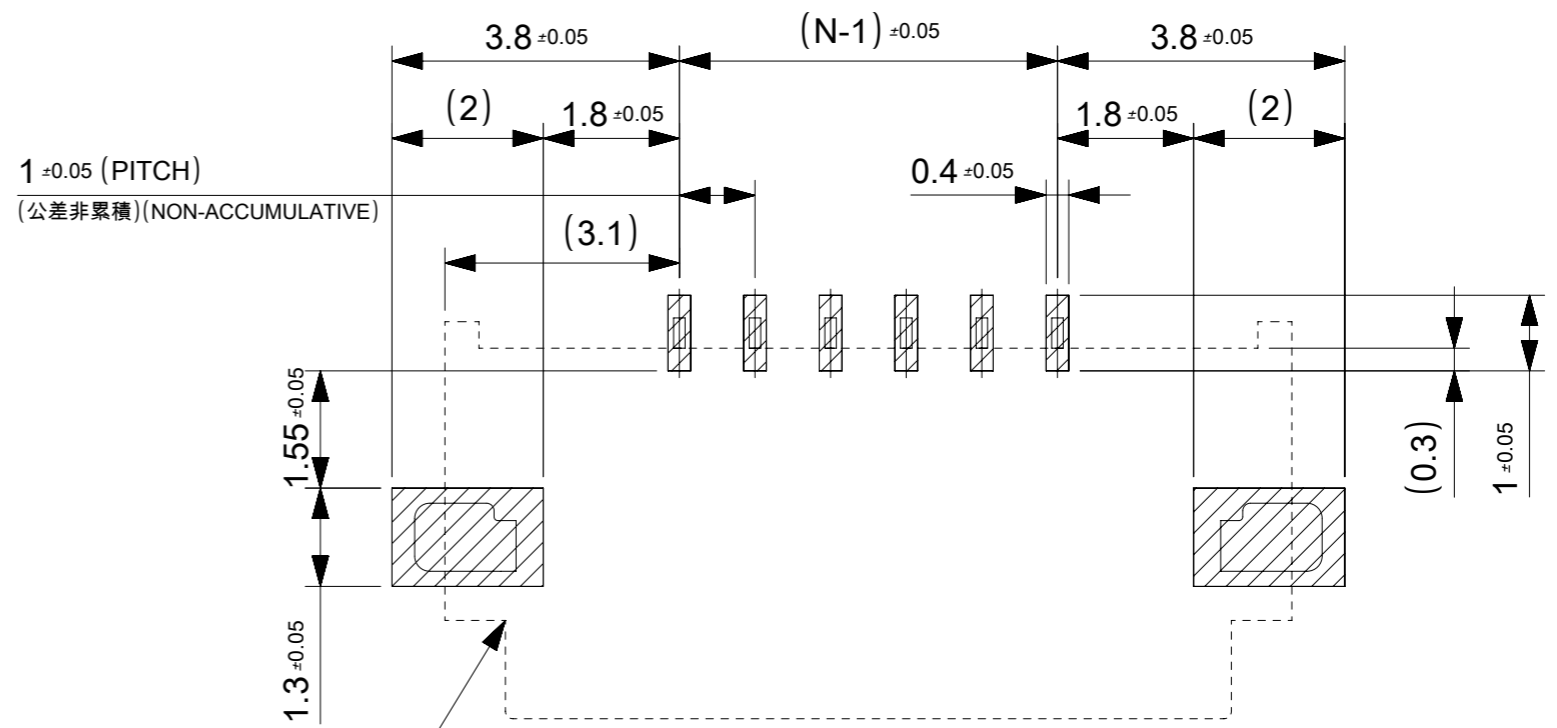
R0.3はFPC/FFC導体部にかからないこと。

5. R0.3 MUST NOT BE OVERLAPPED TO PATTERN OF FPC/FFC.

6.N:極数 N:CIRCUIT.

7.ELV及びRoHS適合品
 ELV AND RoHS COMPLIANT

8.テールと金具を併せた平坦度は0.1以下とする。
 TAILS AND NAILS COPLANALITY TO BE 0.1 MAX.



コネクタ位置
 (CONNECTOR POSITION)

推奨基板レイアウト
 RECOMENDED P.W.B.
 PATTERN LAYOUT

参考マスク厚 : 100µm
 参考マスク開口率 : 100%
 REFERENCE SCREEN THICKNESS : 100µm
 REFERENCE SCREEN OPEN RATIO : 100%

FPC/FFCについて ABOUT FPC/FFC

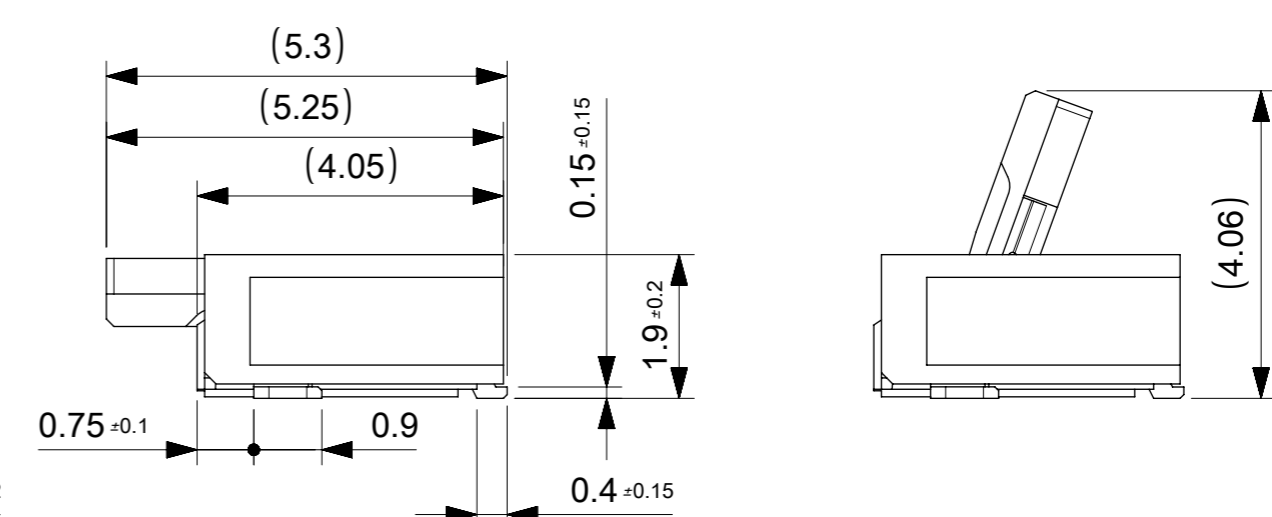
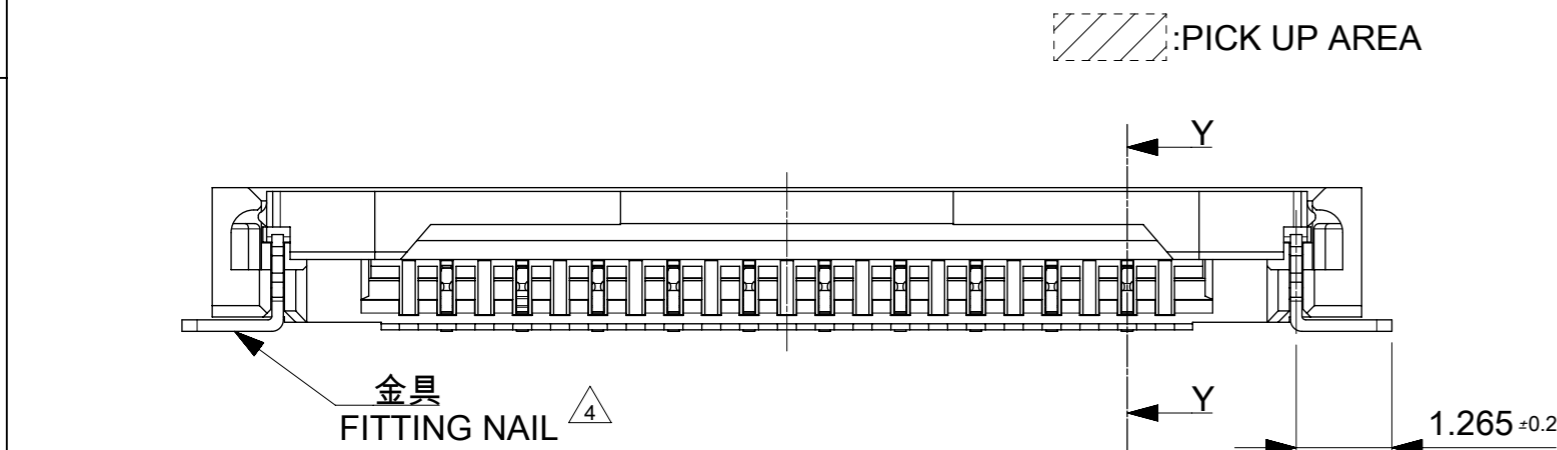
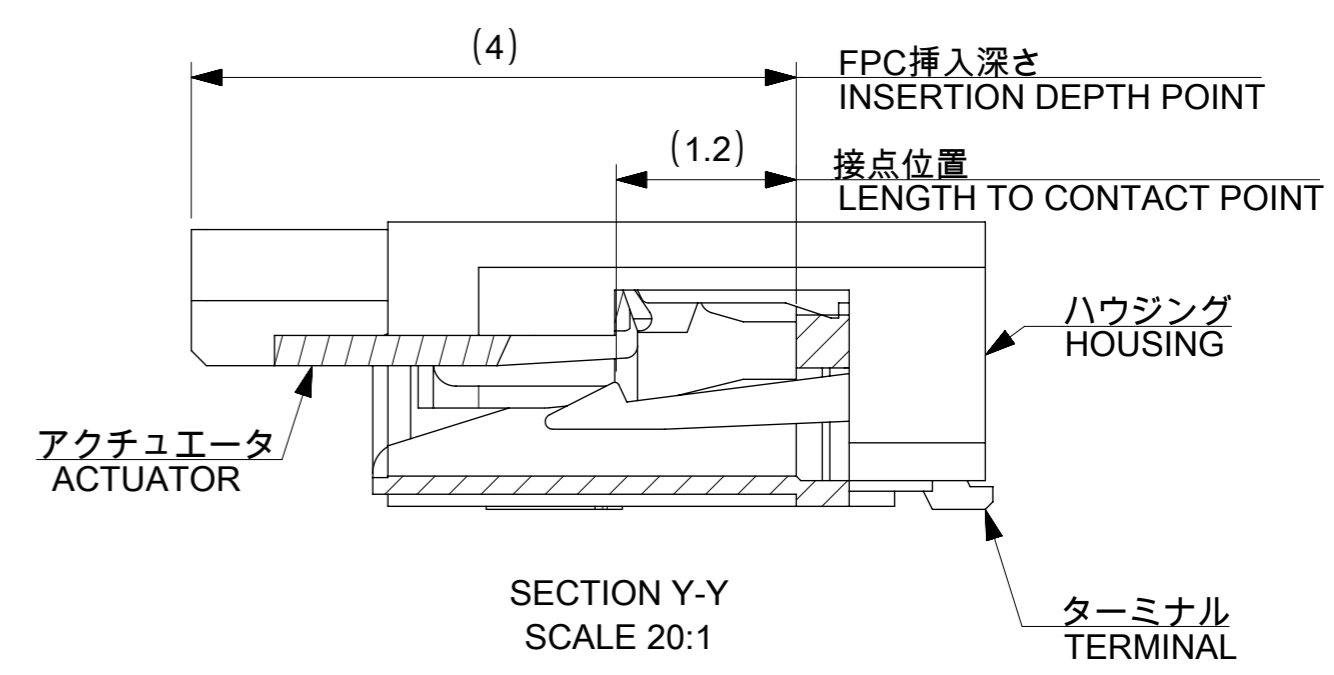
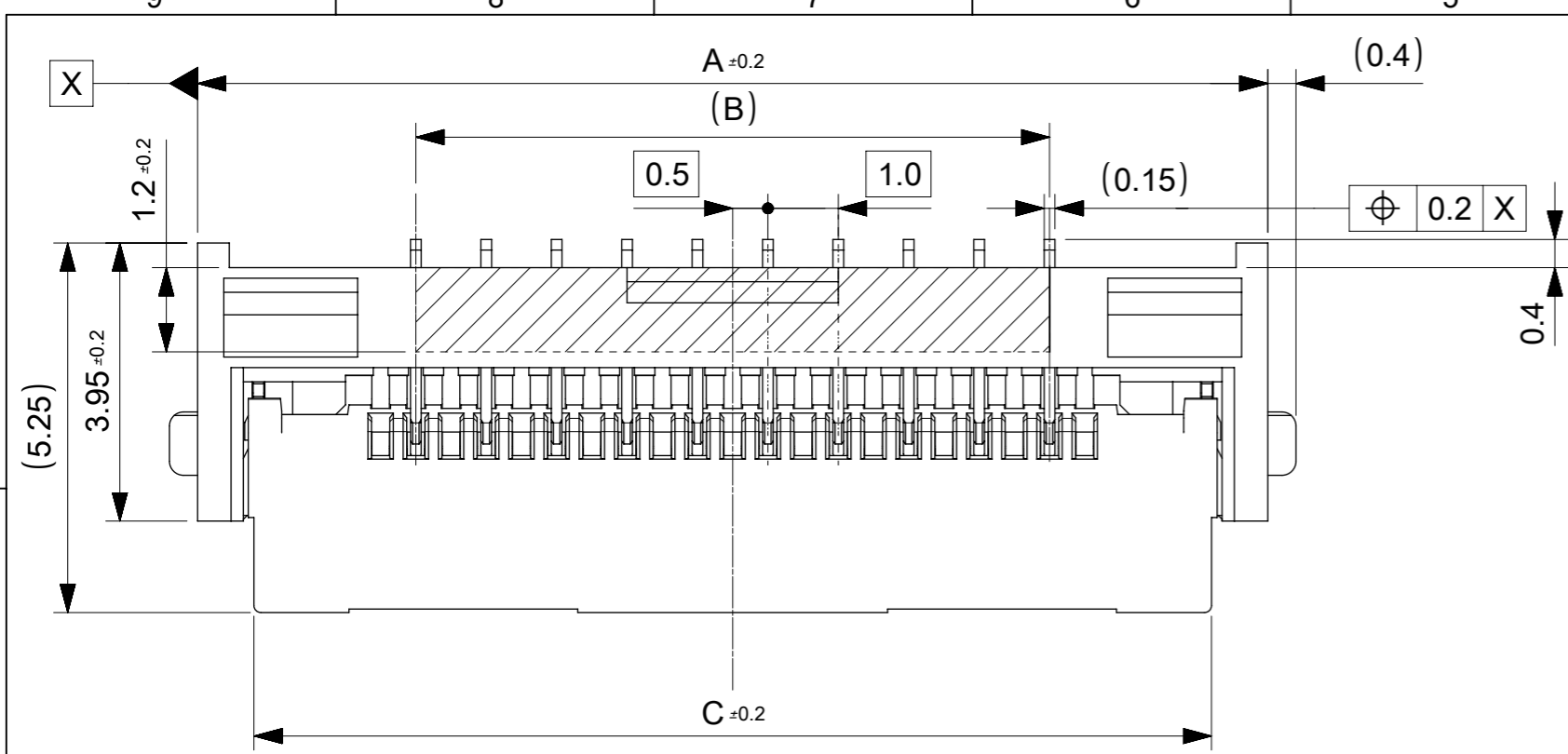
打ち抜き方向は導体側から補強板側を推奨します。
 導体部については軟箔銅35µmまたは50µmを推奨します。
 FFCに規定された定格温度がFFC単体前提である場合が御座います。
 コネクタと組み合わせての実使用において、接着層が劣化するなどの信頼性を満足できないケースを回避するため、
 実機での評価/確認をお願いいたします。
 RECOMMENDED PUNCHING DIRECTION : FROM CONDUCTOR SIDE TO STIFFENER SIDE
 RECOMMENDED CONDUCTOR SPEC : SOFT COPPER FOIL
 RECOMMENDED CONDUCTOR THICKNESS : 35 MICROMETER OR 50 MICROMETER
 WHEN ACTUALLY USING IT WITH CONNECTOR, PLEASE DO THE EVALUATION AND THE CONFIRMATION WITH AN ACTUAL EQUIPMENT TO EVADE THE CASE WHERE RELIABILITY CANNOT BE FILLED (THE ADHESIVE LINE OF FFC IS DETERIORATED ETC.)

FPCについて ABOUT FPC

補強フィルム材質はポリイミドを推奨します。ベースフィルムは25µmを推奨します。
 接着剤は熱硬化接着剤を推奨します。
 尚、接着剤の接点部への付着は導通不良の原因になりますので、染み出しが無い様お願い致します。
 RECOMMENDED MATERIAL/THICKNESS.
 RECOMMENDED STIFFENER MATERIAL: POLYIMIDE
 RECOMMENDED BASE FILM THICKNESS: 25 MICROMETER
 RECOMMENDED ADHESIVE: THERMOSETTING ADHESIVE
 PLEASE PUT APPROPRIATE AMOUNT OF ADHESIVE ON ADHEREND BECAUSE THERE IS A POSSIBILITY THAT THE EXTRA ADHESIVE CAUSES THE DEFECT IN ELECTRICAL CONTINUITY.
 THERE IS A POSSIBILITY THAT THE PRESCRIPT TEMPERATURE OF FFC IS SET TO SINGLE IT.

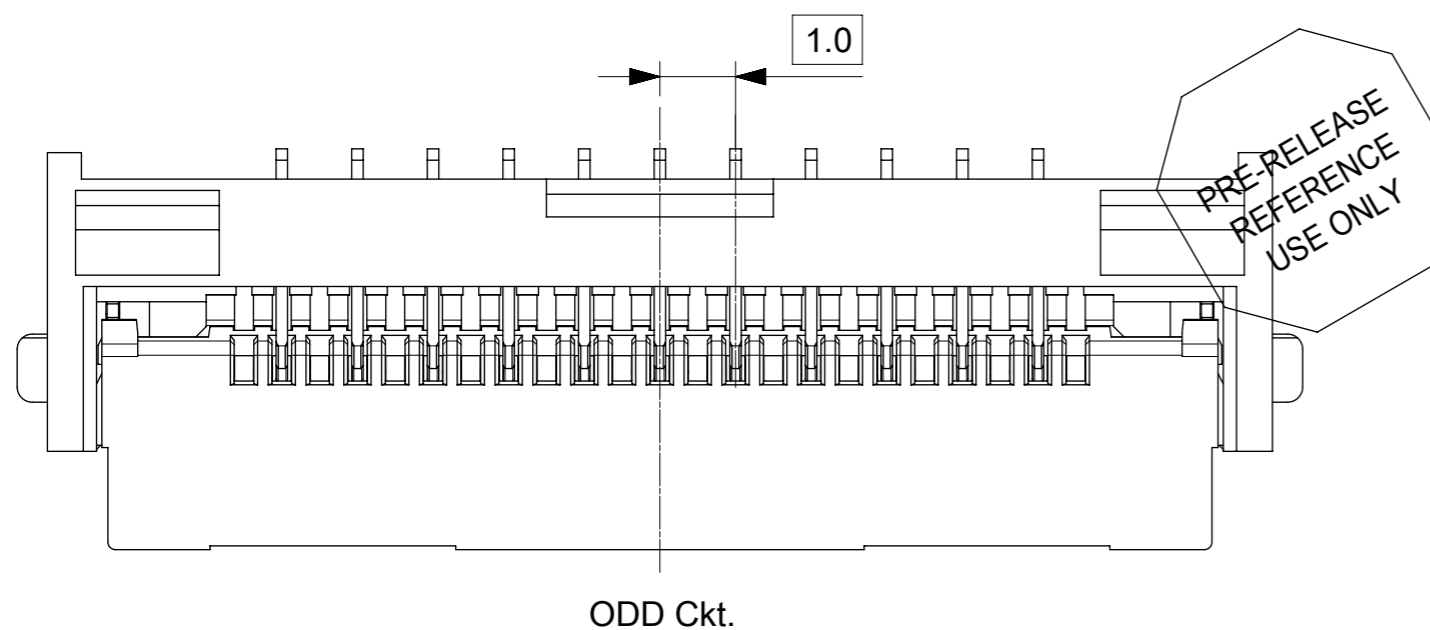
THIS DRAWING CONTAINS INFORMATION THAT IS PROPRIETARY TO MOLEX ELECTRONIC TECHNOLOGIES, LLC AND SHOULD NOT BE USED WITHOUT WRITTEN PERMISSION

REVISED	2016/02/09	2016/02/19	2016/02/19	GENERAL TOLERANCES (UNLESS SPECIFIED)	DIMENSION UNITS	SCALE		
	EC NO: 103009	DRWN: MTAKAHASHI04	CHK'D: KTAKAHASHI		APPR: TKUSUHARA01	MM		≠≠
	ANGULAR TOL ± 1.0 °	DRWN BY	DATE		MTAKAHASHI04	2015/12/24		1.0 FPC ZIF BTM CONT HSG ASSY PRODUCT CUSTOMER DRAWING
	4 PLACES ± 0.05	CHK'D BY	DATE		KTAKAHASHI	2015/12/25		
	3 PLACES ± 0.1	APPR BY	DATE		YNOGAWA	2016/01/04		
2 PLACES ± 0.2	DRAWING SIZE	THIRD ANGLE PROJECTION	A3	SERIES: 200529 MATERIAL NUMBER: SEE SHEET 1 CUSTOMER: GENERAL				
1 PLACE ± 0.2	DRAFT WHERE APPLICABLE MUST REMAIN WITHIN DIMENSIONS				DOCUMENT NUMBER	DOC TYPE	DOC PART	SHEET NUMBER
0 PLACES ± 0.2					2005291000	PSD	000	3 OF 3



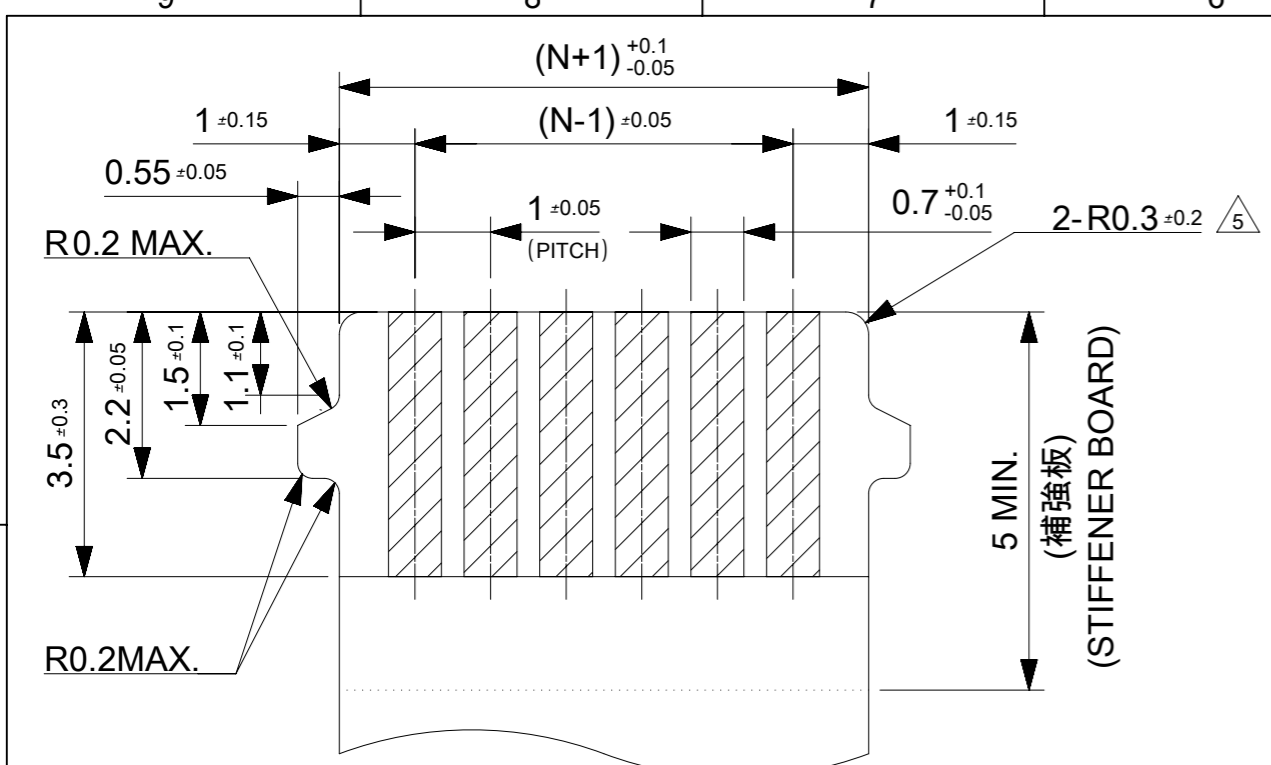
25.6	21	27.2	2005290220	22
20.6	16	22.2	2005290170	17
C	B	A	EMBOSSED PACKAGE オーダー番号 ORDER NO.	Ckt

CONNECTOR SERIES NO. 2005291**0

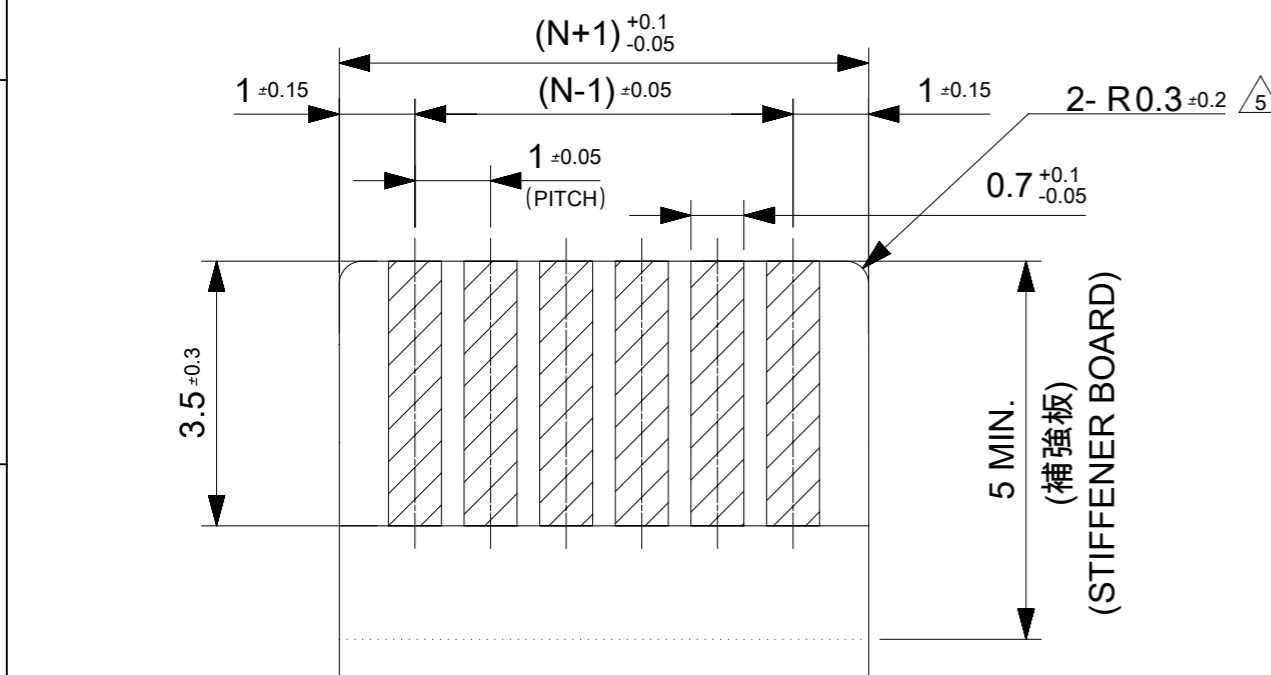


THIS DRAWING CONTAINS INFORMATION THAT IS PROPRIETARY TO MOLEX ELECTRONIC TECHNOLOGIES, LLC AND SHOULD NOT BE USED WITHOUT WRITTEN PERMISSION

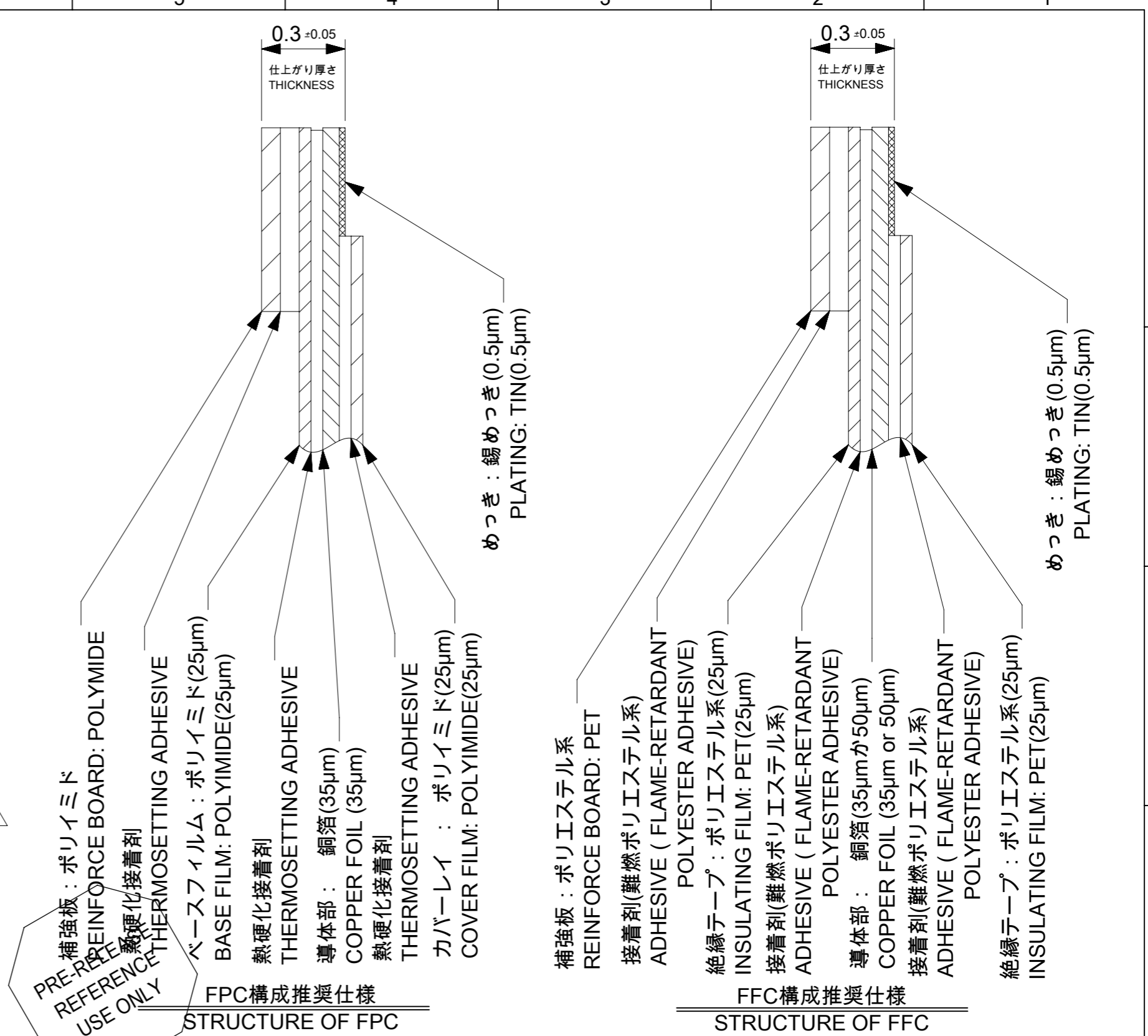
REVISED	2016/04/25	GENERAL TOLERANCES (UNLESS SPECIFIED)	DIMENSION UNITS	SCALE	molex [®]			
	2016/04/25		MM	10:1				
	MTAKAHASHI04		DRWN BY	DATE		1.0 FPC ZIF BTM CONT HSG ASSY		
	KTAKAHASHI		CHK'D BY	DATE		PRODUCT CUSTOMER DRAWING		
EC NO: 103725	DRWN: MTAKAHASHI04	4 PLACES ± 0.05	YNOGAWA	2016/01/04	SERIES	MATERIAL NUMBER	CUSTOMER	
CHK'D: KTAKAHASHI	2016/04/25	3 PLACES ± 0.1	A3	THIRD ANGLE PROJECTION	200529	SEE CHART	GENERAL	
APPR:		2 PLACES ± 0.2			DOCUMENT NUMBER	DOC TYPE	DOC PART	SHEET NUMBER
		1 PLACE ± 0.2			2005291006	PSD	000	1 OF 3
		0 PLACES ± 0.2						
		DRAFT WHERE APPLICABLE MUST REMAIN WITHIN DIMENSIONS						



適合FPC/FFC推奨寸法
APPLICABLE FPC/FFC
RECOMMENDED DIMENSION



耳無し適合FPC/FFC推奨寸法
APPLICABLE NON-TAB FPC/FFC
RECOMMENDED DIMENSION



PRE-RELEASE REFERENCE USE ONLY

FPC構成推奨仕様
STRUCTURE OF FPC

FFC構成推奨仕様
STRUCTURE OF FFC

THIS DRAWING CONTAINS INFORMATION THAT IS PROPRIETARY TO MOLEX ELECTRONIC TECHNOLOGIES, LLC AND SHOULD NOT BE USED WITHOUT WRITTEN PERMISSION

REVISED	2016/04/25	GENERAL TOLERANCES (UNLESS SPECIFIED)		DIMENSION UNITS	SCALE	
	2016/04/25	ANGULAR TOL ± 1.0 °		MM	≠	
EC NO: 103725	DRWN: MTAKAHASHI04	4 PLACES	± 0.05	DRWN BY	DATE	1.0 FPC ZIF BTM CONT HSG ASSY
	CHK'D: KTAKAHASHI	3 PLACES	± 0.1	MTAKAHASHI04	2015/12/24	
REV	APPR:	2 PLACES	± 0.2	CHK'D BY	DATE	PRODUCT CUSTOMER DRAWING
		1 PLACE	± 0.2	KTAKAHASHI	2015/12/25	
C	REV	0 PLACES	± 0.2	APPR BY	DATE	SERIES
		DRAFT WHERE APPLICABLE MUST REMAIN WITHIN DIMENSIONS		YNOGAWA	2016/01/04	
				DRAWING SIZE	THIRD ANGLE PROJECTION	MATERIAL NUMBER
				A3		SEE SHEET 1
						CUSTOMER
						GENERAL
				DOCUMENT NUMBER	DOC TYPE	DOC PART
				2005291006	PSD	000
						SHEET NUMBER
						2 OF 3

注記 NOTES

1.使用材料 MATERIAL

ハウジング :液晶ポリマー ガラス充填、UL94V-0(ベージュ)
 HOUSING LIQUID CRYSTAL POLYMER GLASS FILLED, UL94V-0(BEIGE)
 アクチュエータ :ポリアミド ガラス充填、UL94V-0(黒)
 ACTUATOR POLYAMIDE GLASS FILLED, UL94V-0(BLACK)
 ターミナル :リン青銅(t=0.15)
 TERMINAL PHOSPHOR BRONZE
 金具 :リン青銅(t=0.15)
 FITTING NAIL PHOSPHOR BRONZE

2.めっき仕様 PLATING

ターミナル TERMINAL
 錫銀ビスマスめっき (1.0μm以上)
 下地:ニッケルめっき (1.0μm以上)
 TINSILVER BISMUTH PLATING (1.0 MICROMETER MINIMUM)
 UNDERPLATE : NICKEL OVERALL (1.0 MICROMETER MINIMUM)
 金具 FITTING NAIL
 錫めっき(1.0μm以上)
 下地:ニッケルめっき (1.0μm以上)
 TIN PLATING (1.0 MICROMETER MIN.)
 UNDER PLATING : NICKEL PLATING (1.0 MICROMETER MIN.)

3.エンボステーブ梱包時は、アクチュエータが閉じた状態とする。
 IN THE PACKAGE, ACTUATOR OF PART SHOULD BE CLOSED.

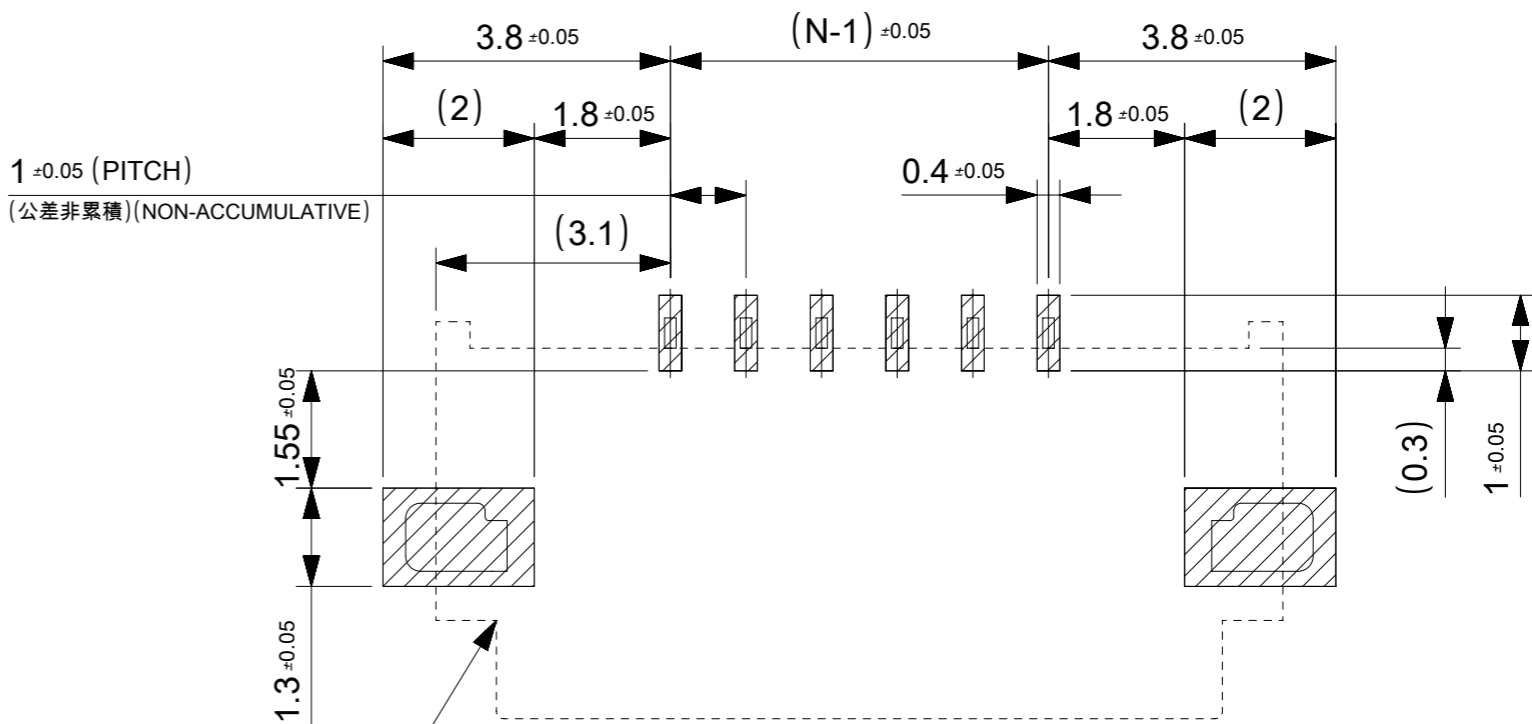
4. パターン剥離止め用金具
 FITTING NAIL FOR PREVENTION OF PEELING OF P.C.B. PATTERN.

5. R0.3はFPC/FFC導体部にかからないこと。
 R0.3 MUST NOT BE OVERLAPPED TO PATTERN OF FPC/FFC.

6.N:極数 N:CIRCUIT.

7.ELV及びRoHS適合品
 ELV AND RoHS COMPLIANT

8.テールと金具を併せた平坦度は0.1以下とする。
 TAILS AND NAILS COPLANALITY TO BE 0.1 MAX.



コネクタ位置 (CONNECTOR POSITION)

推奨基板レイアウト RECOMENDED P.W.B. PATTERN LAYOUT

参考マスク厚 : 100μm
 参考マスク開口率 : 100%
 REFERENCE SCREEN THICKNESS : 100μm
 REFERENCE SCREEN OPEN RATIO : 100%

FPC/FFCについて ABOUT FPC/FFC

打ち抜き方向は導体側から補強板側を推奨します。
 導体部については軟箔銅35μmまたは50μmを推奨します。
 FFCに規定された定格温度がFFC単体前提である場合が御座います。
 コネクタと組み合わせた実使用において、接着層が劣化するなどの信頼性を満足できないケースを回避するため、
 実機での評価/確認をお願いいたします。

RECOMMENDED PUNCHING DIRECTION : FROM CONDUCTOR SIDE TO STIFFENER SIDE
 RECOMMENDED CONDUCTOR SPEC : SOFT COPPER FOIL
 RECOMMENDED CONDUCTOR THICKNESS : 35 MICROMETER OR 50 MICROMETER
 WHEN ACTUALLY USING IT WITH CONNECTOR, PLEASE DO THE EVALUATION AND THE CONFIRMATION WITH AN ACTUAL EQUIPMENT TO EVADE THE CASE WHERE RELIABILITY CANNOT BE FILLED (THE ADHESIVE LINE OF FFC IS DETERIORATED ETC.)

FPCについて ABOUT FPC

補強フィルム材質はポリイミドを推奨します。ベースフィルムは25μmを推奨します。
 接着剤は熱硬化接着剤を推奨します。
 尚、接着剤の接点部への付着は導通不良の原因になりますので、染み出しが無い様お願い致します。
 RECOMMENDED MATERIAL/THICKNESS.
 RECOMMENDED STIFFENER MATERIAL: POLYIMIDE
 RECOMMENDED BASE FILM THICKNESS: 25 MICROMETER
 RECOMMENDED ADHESIVE: THERMOSETTING ADHESIVE
 PLEASE PUT APPROPRIATE AMOUNT OF ADHESIVE ON ADHEREND BECAUSE THERE IS A POSSIBILITY THAT THE EXTRA ADHESIVE CAUSES THE DEFECT IN ELECTRICAL CONTINUITY.
 THERE IS A POSSIBILITY THAT THE PRESCRIPT TEMPERATURE OF FFC IS SET TO SINGLE IT.

PRE-RELEASE
 REFERENCE
 USE ONLY

THIS DRAWING CONTAINS INFORMATION THAT IS PROPRIETARY TO MOLEX ELECTRONIC TECHNOLOGIES, LLC AND SHOULD NOT BE USED WITHOUT WRITTEN PERMISSION

REVISED	2016/04/25	GENERAL TOLERANCES (UNLESS SPECIFIED)	DIMENSION UNITS	SCALE	molex [®]		
	2016/04/25		MM	±±			
	EC NO: 103725 DRWN: MTAKAHASHI04 CHK'D: KTAKAHASHI APPR:		4 PLACES	± 0.05		DRWN BY	DATE
			3 PLACES	± 0.1		MTAKAHASHI04	2015/12/24
			2 PLACES	± 0.2		CHK'D BY	DATE
1 PLACE		± 0.2	KTAKAHASHI	2015/12/25			
		0 PLACES	± 0.2	APPR BY	DATE		
				YNOGAWA	2016/01/04		
		DRAFT WHERE APPLICABLE MUST REMAIN WITHIN DIMENSIONS	DRAWING SIZE	THIRD ANGLE PROJECTION			
			A3				
			PRODUCT CUSTOMER DRAWING				
			SERIES	MATERIAL NUMBER	CUSTOMER		
			200529	SEE SHEET 1	GENERAL		
			DOCUMENT NUMBER	DOC TYPE	DOC PART		
			2005291006	PSD	000		
			SHEET NUMBER				
			3 OF 3				