



Chipsmall Limited consists of a professional team with an average of over 10 year of expertise in the distribution of electronic components. Based in Hongkong, we have already established firm and mutual-benefit business relationships with customers from,Europe,America and south Asia,supplying obsolete and hard-to-find components to meet their specific needs.

With the principle of “Quality Parts,Customers Priority,Honest Operation,and Considerate Service”,our business mainly focus on the distribution of electronic components. Line cards we deal with include Microchip,ALPS,ROHM,Xilinx,Pulse,ON,Everlight and Freescale. Main products comprise IC,Modules,Potentiometer,IC Socket,Relay,Connector.Our parts cover such applications as commercial,industrial, and automotives areas.

We are looking forward to setting up business relationship with you and hope to provide you with the best service and solution. Let us make a better world for our industry!



## Contact us

Tel: +86-755-8981 8866 Fax: +86-755-8427 6832

Email & Skype: info@chipsmall.com Web: www.chipsmall.com

Address: A1208, Overseas Decoration Building, #122 Zhenhua RD., Futian, Shenzhen, China

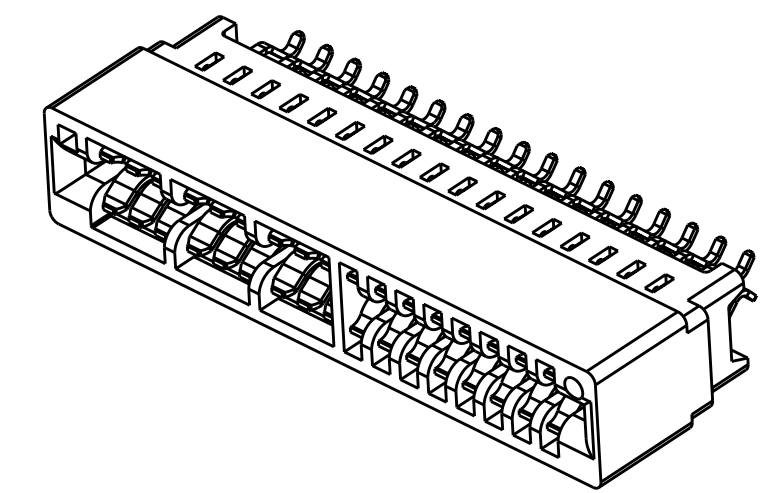


THIS DRAWING IS UNPUBLISHED. RELEASED FOR PUBLICATION 20  
 © COPYRIGHT 20 BY TYCO ELECTRONICS CORPORATION. ALL RIGHTS RESERVED.

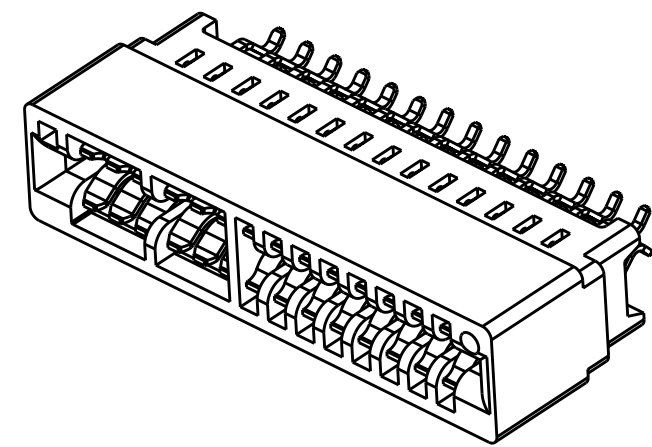
LOC	DIST	REVISIONS			
P	LTR	DESCRIPTION	DATE	DWN	APVD
GP	00	B3	REV PER ECO-10-026305	25FEB2011	RG MS

- HOUSING MATERIAL: GLASS FILLED POLYESTER, COLOR, BLACK
- CONTACT BASE MATERIAL: HIGH CONDUCTIVITY COPPER ALLOY
- CONTACT FINISH: NICKEL PLATE, .00127 [.000050] MIN. ALL OVER.  
 MATTE TIN PLATE, .00254 [.000100] MIN ON SOLDER POSTS.  
 GOLD PLATE, .00076 [.000030] MIN IN MATING INTERFACE.

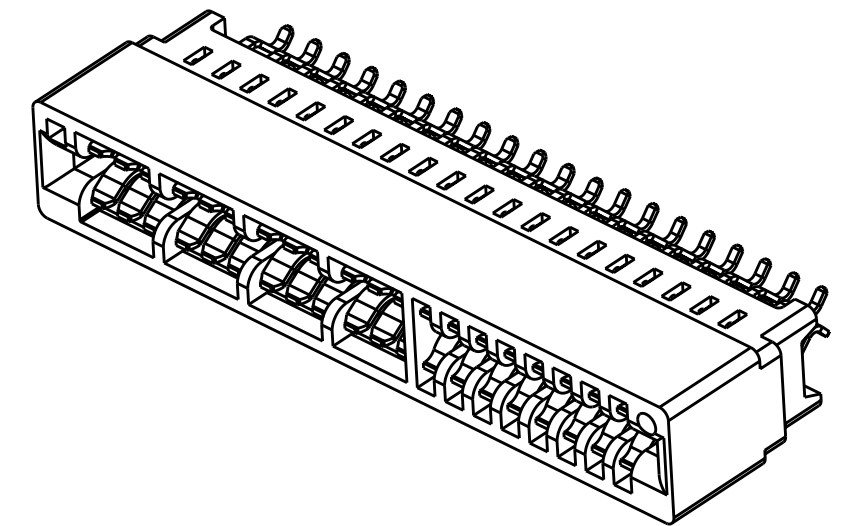
- 4 TYCO ELECTRONICS P/N AND DATE CODE MARKED IN APPROX AREA SHOWN.
- 5 SEE TYCO ELECTRONICS APPLICATION SPEC 114-13018 FOR ADDITIONAL PCB DETAILS.



3P X 8S P/N:2007088-1



2P X 8S P/N:2007088-2



4P X 8S P/N:2007088-3

53.01 [2.087]	12	45.72 [1.800]	19	3	55.33 [2.178]	48.26 [1.900]	53.34 [2.100]	57.40 [2.260]	4	8	2007088-3
37.77 [1.487]	6	30.48 [1.200]	13	1	40.09 [1.578]	33.02 [1.300]	38.10 [1.500]	42.16 [1.660]	2	8	2007088-2
45.39 [1.787]	9	38.10 [1.500]	16	2	47.71 [1.878]	40.64 [1.600]	45.72 [1.800]	49.78 [1.960]	3	8	2007088-1
DIM_K	"H"	DIM_G	"F"	"E"	DIM_D ±.13	DIM_C	DIM_B ±.25	DIM_A ±.25	NO. POWER POSN	NO SIGNAL POSN	PART NUMBERS

THIS DRAWING IS A CONTROLLED DOCUMENT FOR TYCO ELECTRONICS CORPORATION  
 IT IS SUBJECT TO CHANGE AND THE CONTROLLING ENGINEERING ORGANIZATION  
 SHOULD BE CONTACTED FOR THE LATEST REVISION.

DWN: G. PETERS 19APR2007  
 CHK: A. FRANTUM 19APR2007  
 APVD: S. FLICKINGER 19APR2007

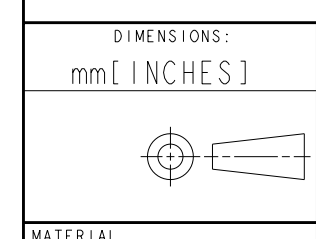
Tyco Electronics  
 Harrisburg, PA 17105-3608

NAME: CONNECTOR ASSEMBLY, SEC II POWER,  
 DUAL POSITION, 2.54[.100] C.L.  
 CARD EDGE, S/M STYLE

PRODUCT SPEC: 108-2202  
 APPLICATION SPEC: 114-13018

SIZE: A2 CAGE CODE: 200779 DRAWING NO: 2007088 RESTRICTED TO: -

MATERIAL: CUSTOMER DRAWING WEIGHT: - SCALE: 1:1 SHEET 1 OF 3 REV: B3

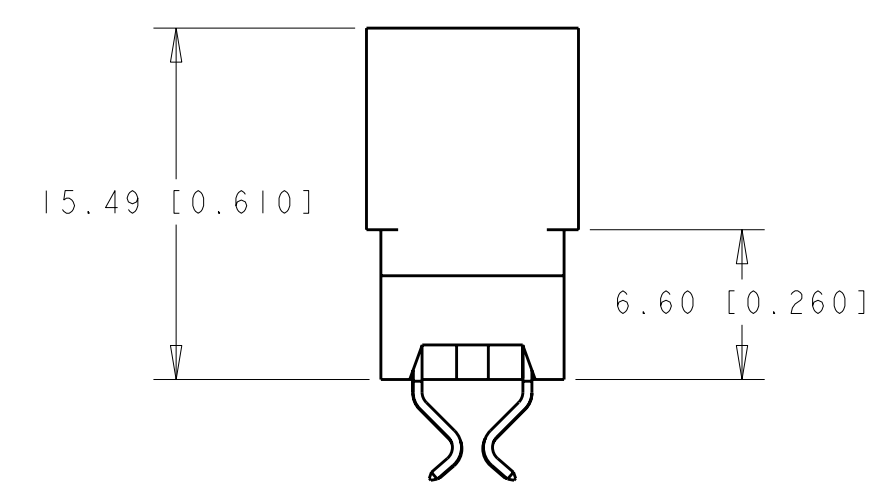
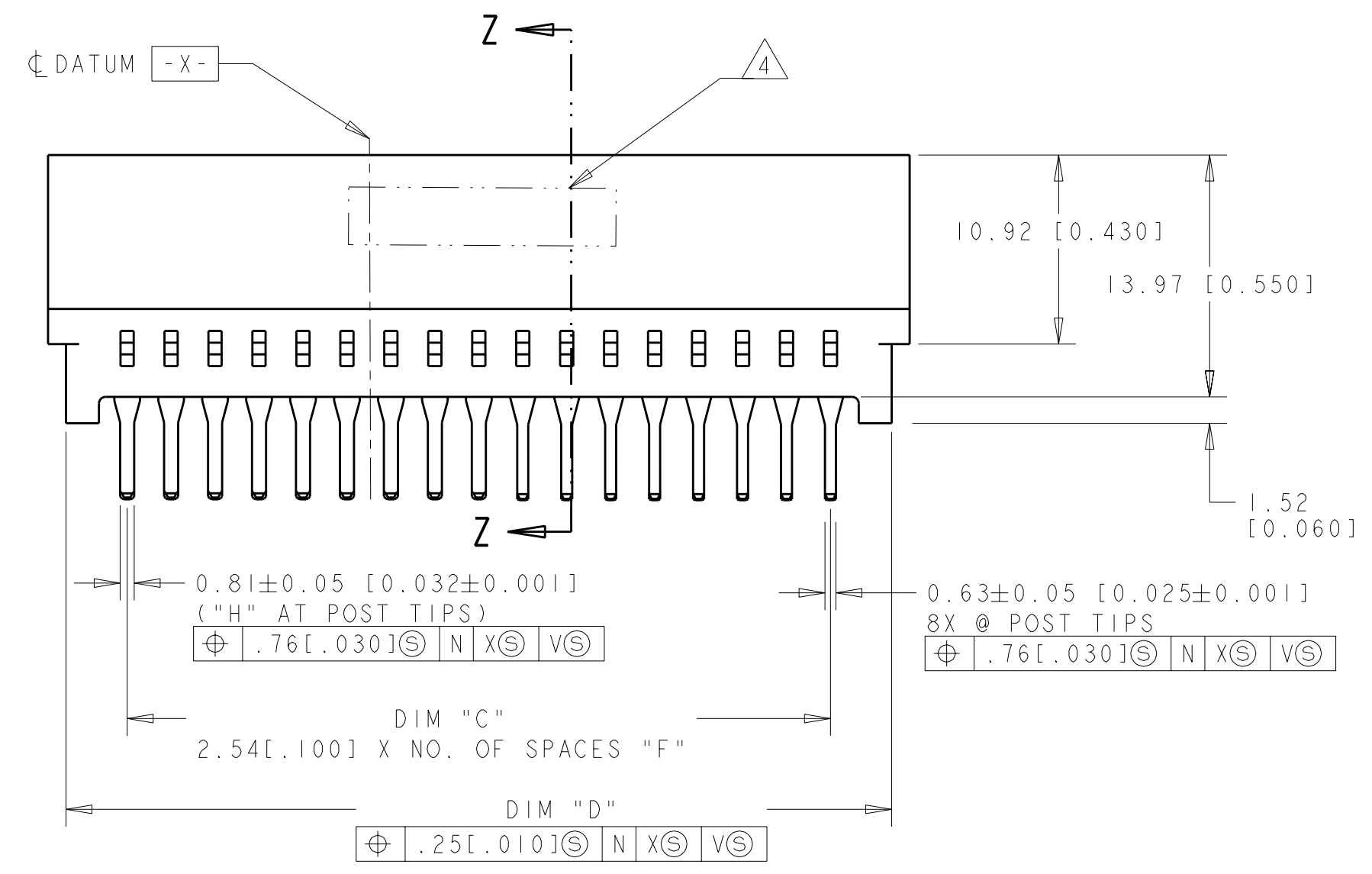
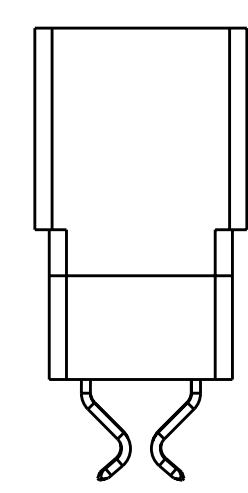
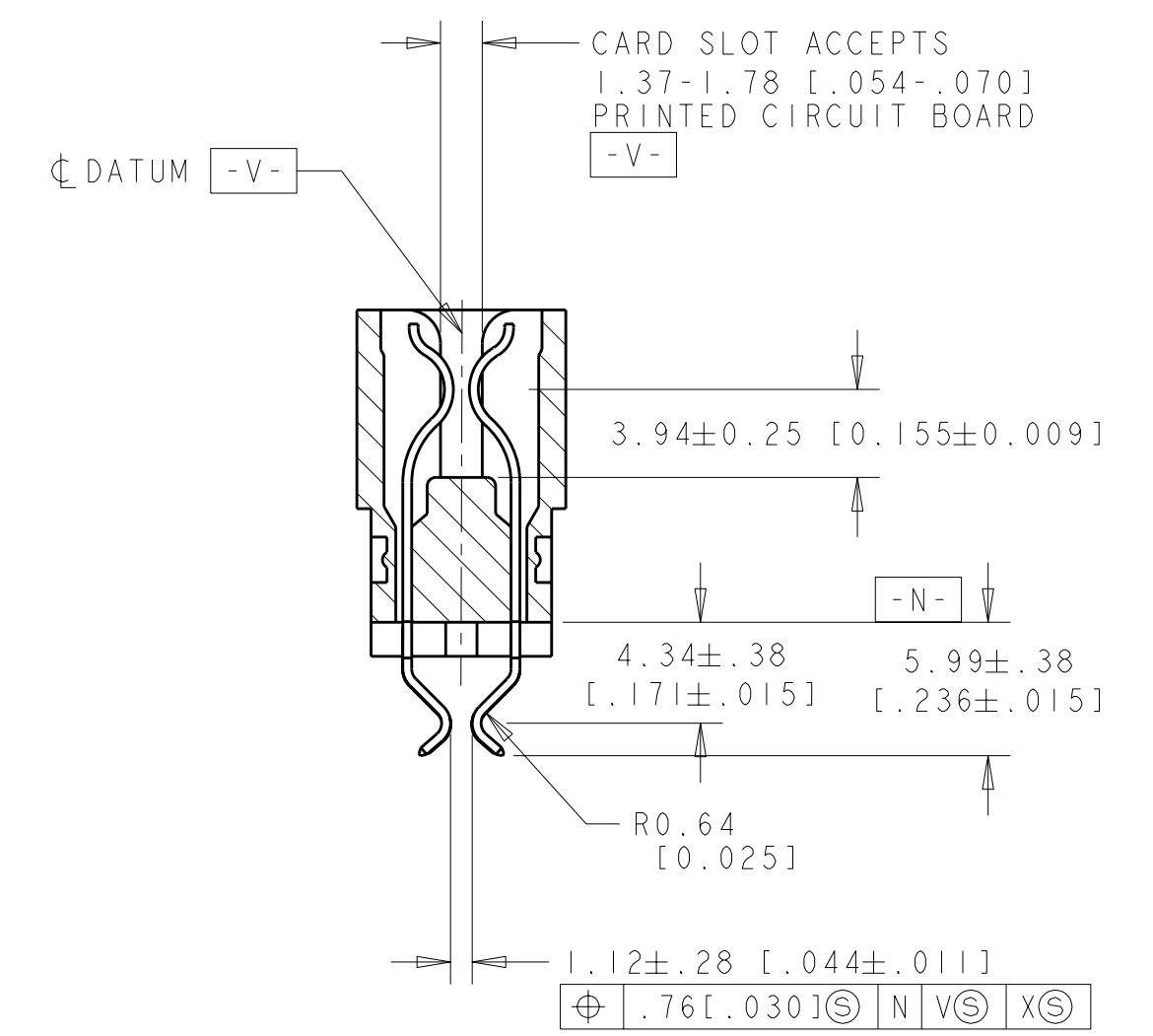
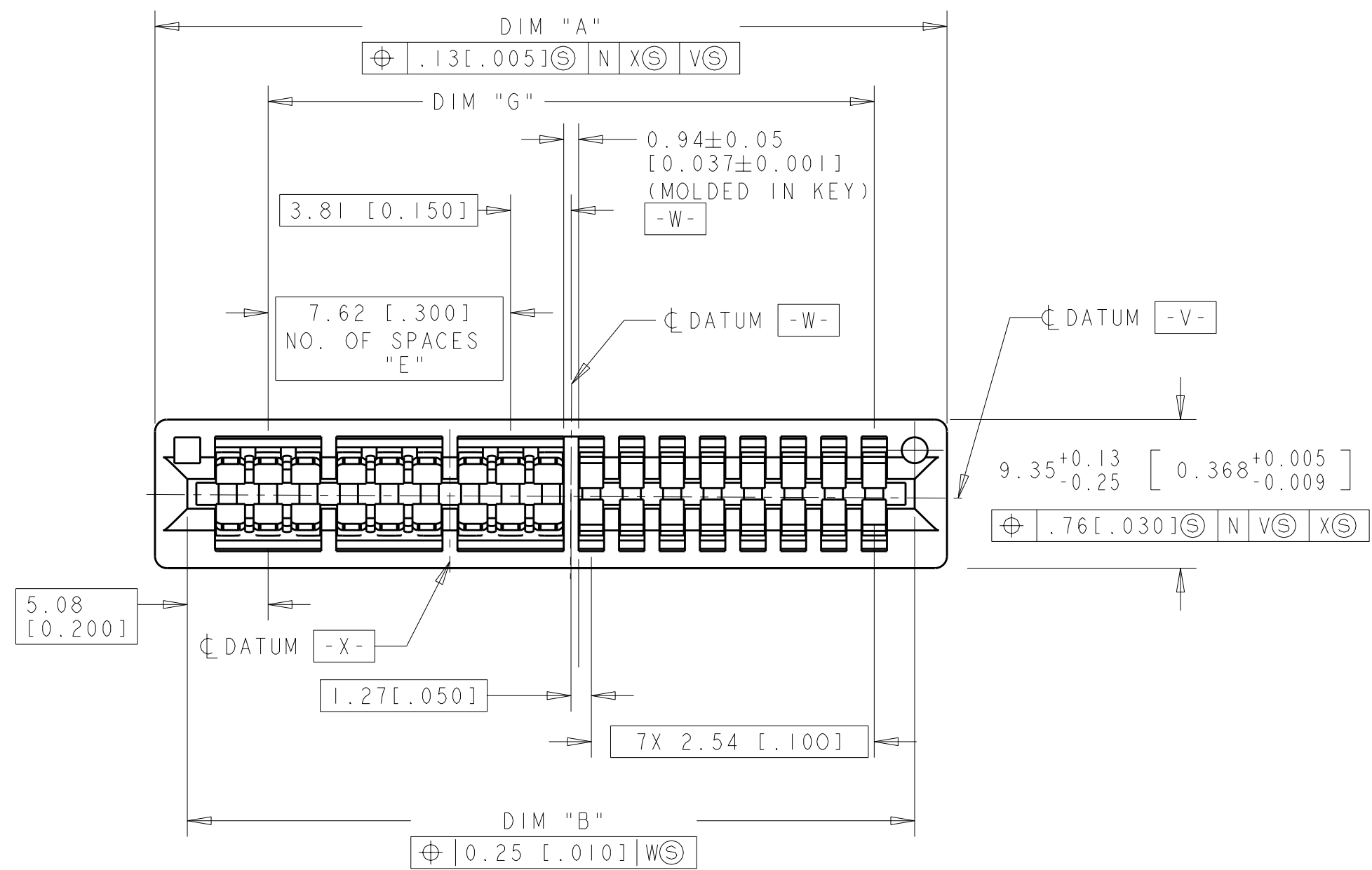


NOTE 1

NOTE 2

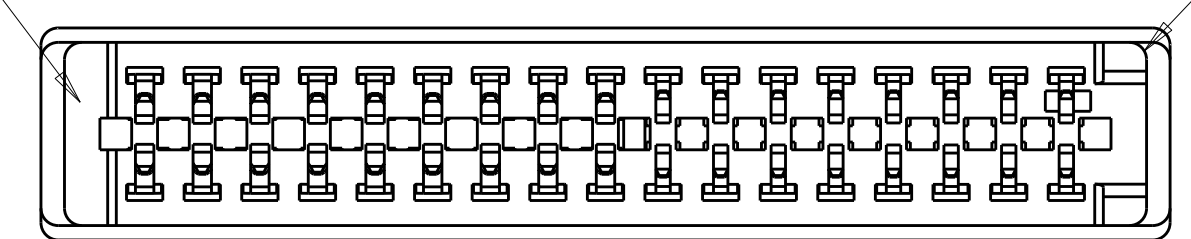
THIS DRAWING IS UNPUBLISHED. RELEASED FOR PUBLICATION 20  
 © COPYRIGHT 20 BY TYCO ELECTRONICS CORPORATION. ALL RIGHTS RESERVED.

LOC	DIST	REVISIONS			
P	LTR	DESCRIPTION	DATE	DWN	APVD
GP	00	SEE SHEET 1			



KEY LOCATION

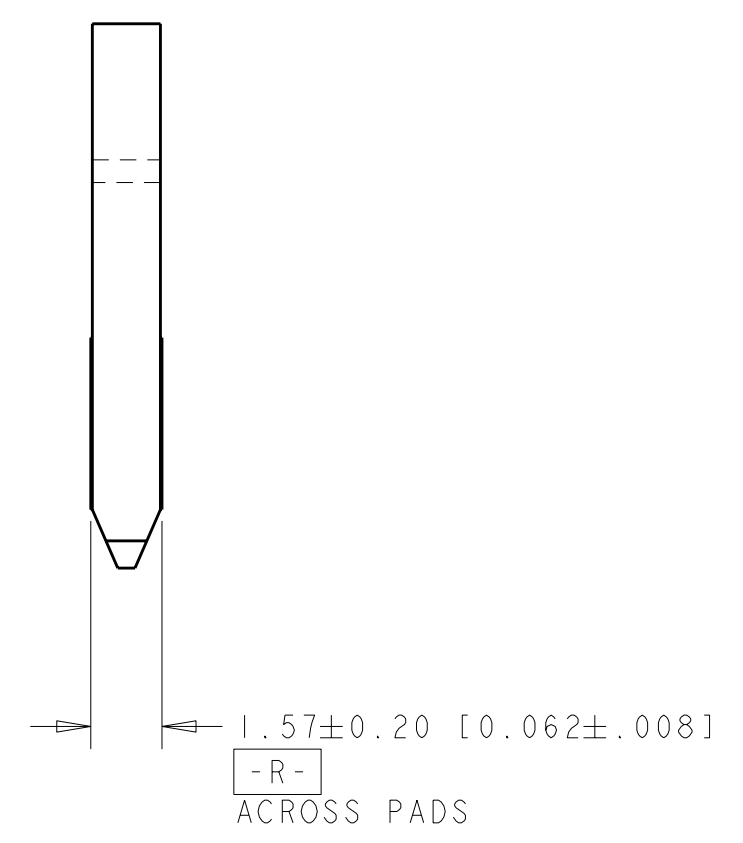
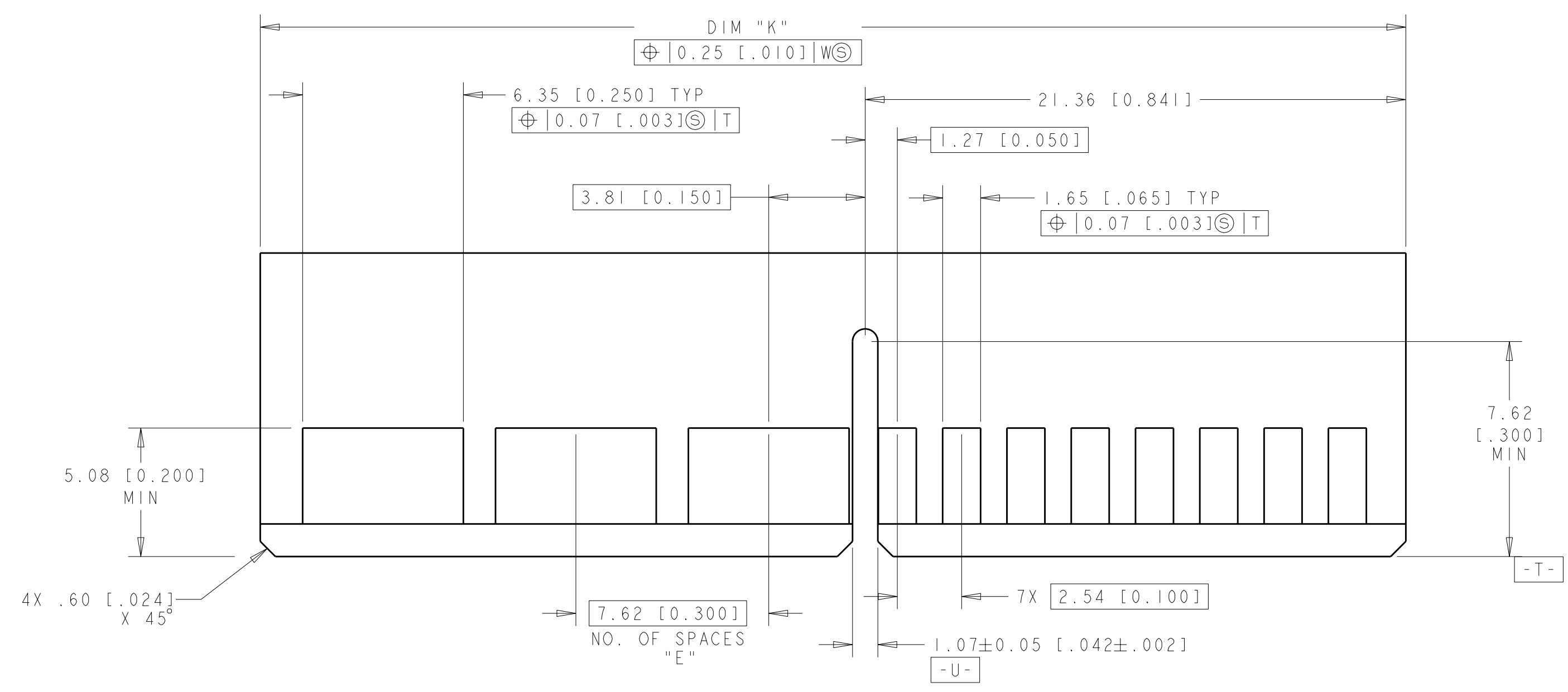
4X SHARP CORNERS OPTIONAL



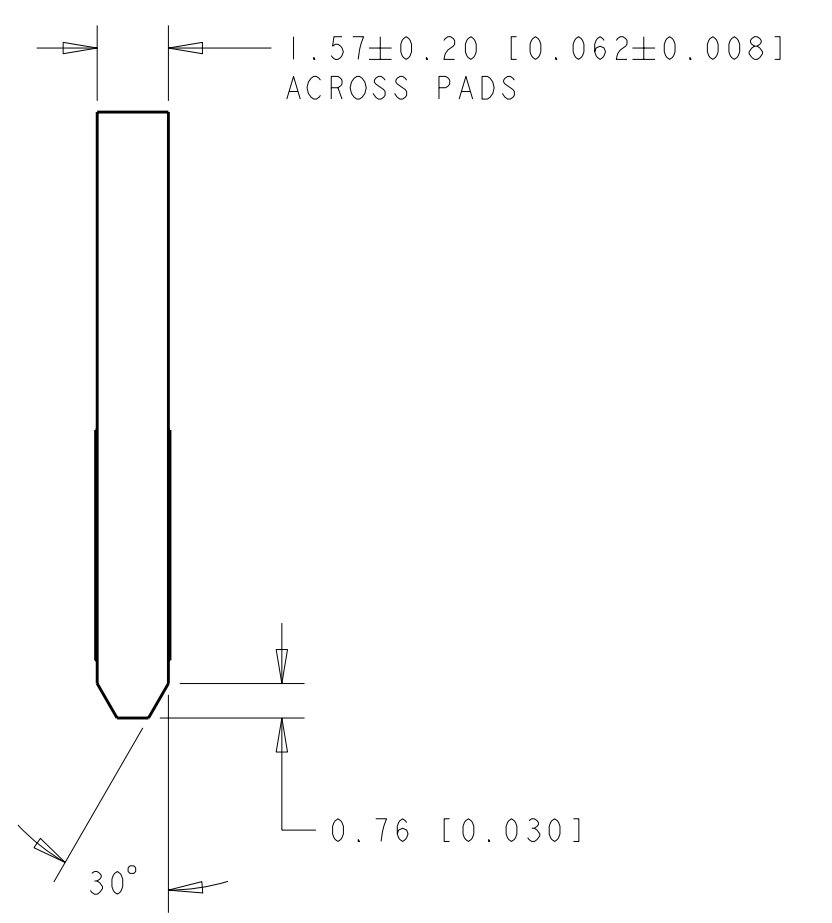
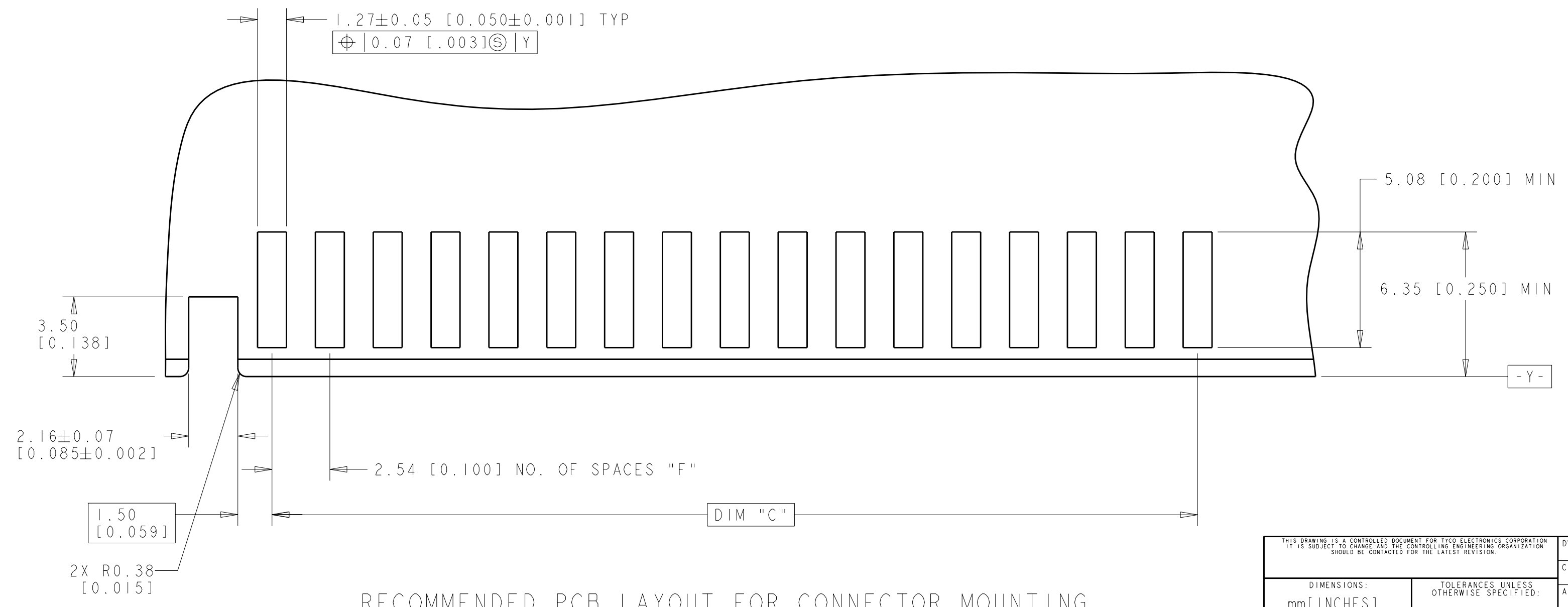
THIS DRAWING IS A CONTROLLED DOCUMENT FOR TYCO ELECTRONICS CORPORATION. IT IS SUBJECT TO CHANGE AND THE CONTROLLING ENGINEERING ORGANIZATION SHOULD BE CONTACTED FOR THE LATEST REVISION.		DWN: G. PETERS 19APR2007	Tyco Electronics Harrisburg, PA 17105-3608
DIMENSIONS: mm [INCHES]		CHK: A. FRANTUM 19APR2007	
TOLERANCES UNLESS OTHERWISE SPECIFIED:		APVD: S. FLICKINGER 19APR2007	NAME: CONNECTOR ASSEMBLY, SEC II POWER, DUAL POSITION, 2.54 [0.100] C.L. CARD EDGE, S/M STYLE
0 PLC ±	1 PLC ±.25 [0.01]	PRODUCT SPEC: 108-2202	SIZE: A200779
2 PLC ±.027 [0.005]	3 PLC ±	APPLICATION SPEC: 114-13018	CAGE CODE: C-2007088
4 PLC ±	ANGLES ±1	WEIGHT: -	DRAWING NO: 2007088
MATERIAL: NOTE 1	FINISH: NOTE 2	CUSTOMER DRAWING	RESTRICTED TO: -
SCALE: 1:1			SHEET 2 OF 3 REV B3

THIS DRAWING IS UNPUBLISHED. RELEASED FOR PUBLICATION 20  
 © COPYRIGHT 20 BY TYCO ELECTRONICS CORPORATION. ALL RIGHTS RESERVED.

LOC	DIST	REVISIONS					
GP	00	P	LTR	DESCRIPTION	DATE	DWN	APVD
		-		SEE SHEET 1			



RECOMMENDED MATING BOARD EDGE CONFIGURATION  
 TYPICAL BOTH SIDES



RECOMMENDED PCB LAYOUT FOR CONNECTOR MOUNTING  
 TYPICAL BOTH SIDES

THIS DRAWING IS A CONTROLLED DOCUMENT FOR TYCO ELECTRONICS CORPORATION. IT IS SUBJECT TO CHANGE AND THE CONTROLLING ENGINEERING ORGANIZATION SHOULD BE CONTACTED FOR THE LATEST REVISION.		DWN G. PETERS 19APR2007	Tyco Electronics Harrisburg, PA 17105-3608	
DIMENSIONS: mm [INCHES]		CHK A. FRANTUM 19APR2007	NAME CONNECTOR ASSEMBLY, SEC II POWER, DUAL POSITION, 2.54 [0.100] C.L. CARD EDGE, S/M STYLE	
TOLERANCES UNLESS OTHERWISE SPECIFIED: 0 PLC ± 1 PLC ±.25 [0.01] 2 PLC ±.25 [0.01] 3 PLC ±.027 [0.005] 4 PLC ± ANGLES ±1 FINISH		APVD S. FLICKINGER 19APR2007	SIZE A200779	
MATERIAL		PRODUCT SPEC 108-2202	DRAWING NO. 2007088	
NOTE 1		APPLICATION SPEC 114-13018	RESTRICTED TO -	
NOTE 2		WEIGHT -	SCALE 1:1	
CUSTOMER DRAWING		SHEET 3 OF 3		REV B3