



Chipsmall Limited consists of a professional team with an average of over 10 year of expertise in the distribution of electronic components. Based in Hongkong, we have already established firm and mutual-benefit business relationships with customers from,Europe,America and south Asia,supplying obsolete and hard-to-find components to meet their specific needs.

With the principle of "Quality Parts,Customers Priority,Honest Operation,and Considerate Service",our business mainly focus on the distribution of electronic components. Line cards we deal with include Microchip,ALPS,ROHM,Xilinx,Pulse,ON,Everlight and Freescale. Main products comprise IC,Modules,Potentiometer,IC Socket,Relay,Connector.Our parts cover such applications as commercial,industrial, and automotives areas.

We are looking forward to setting up business relationship with you and hope to provide you with the best service and solution. Let us make a better world for our industry!



Contact us

Tel: +86-755-8981 8866 Fax: +86-755-8427 6832

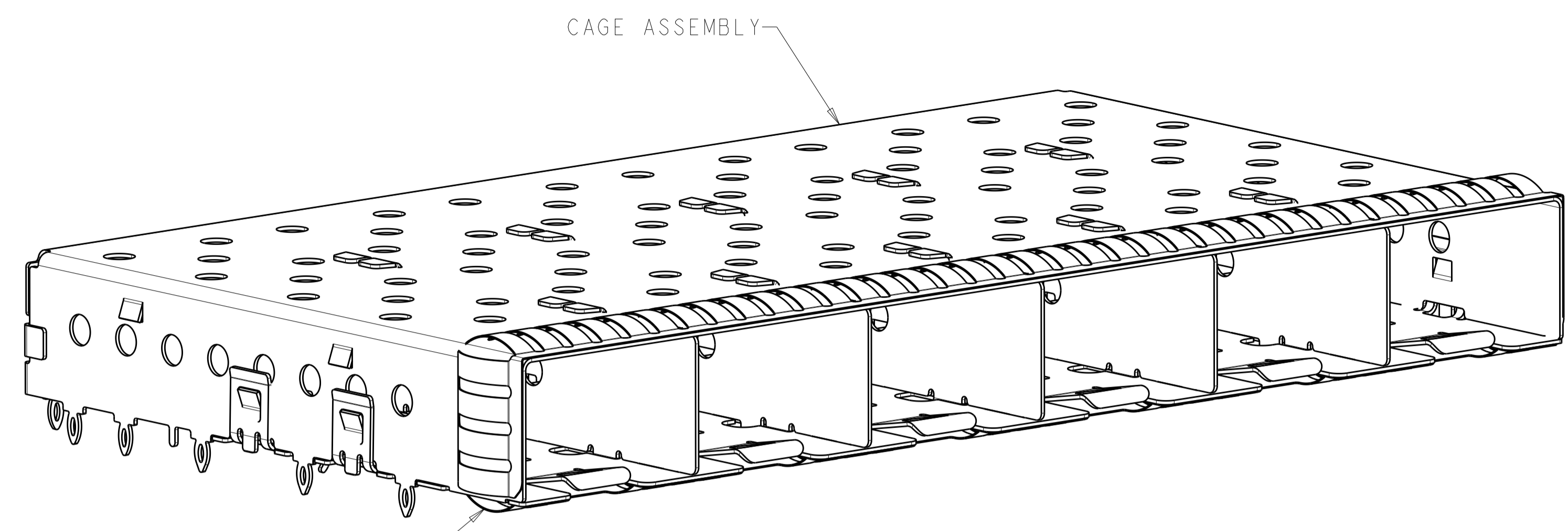
Email & Skype: info@chipsmall.com Web: www.chipsmall.com

Address: A1208, Overseas Decoration Building, #122 Zhenhua RD., Futian, Shenzhen, China

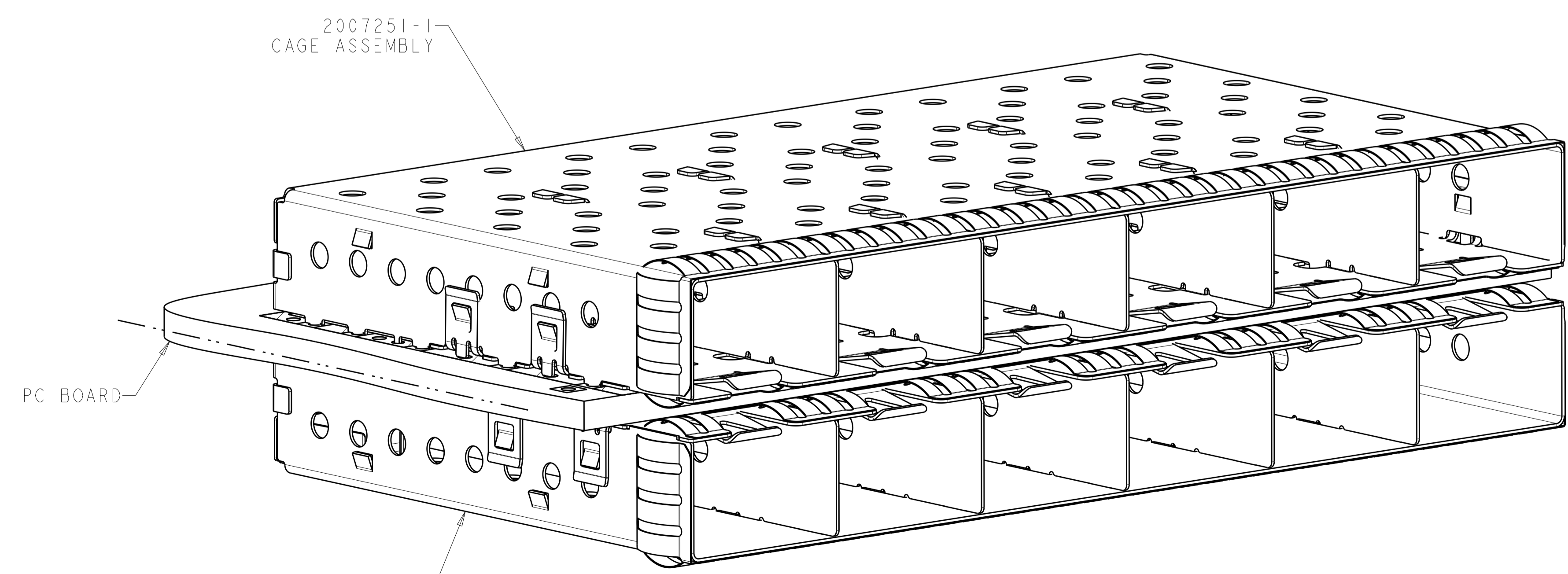
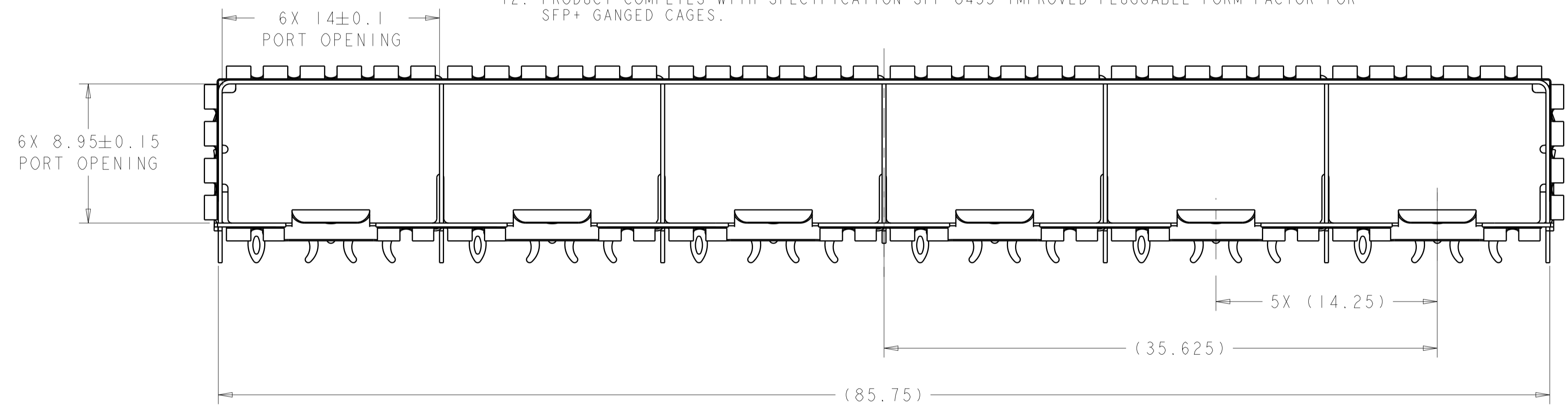
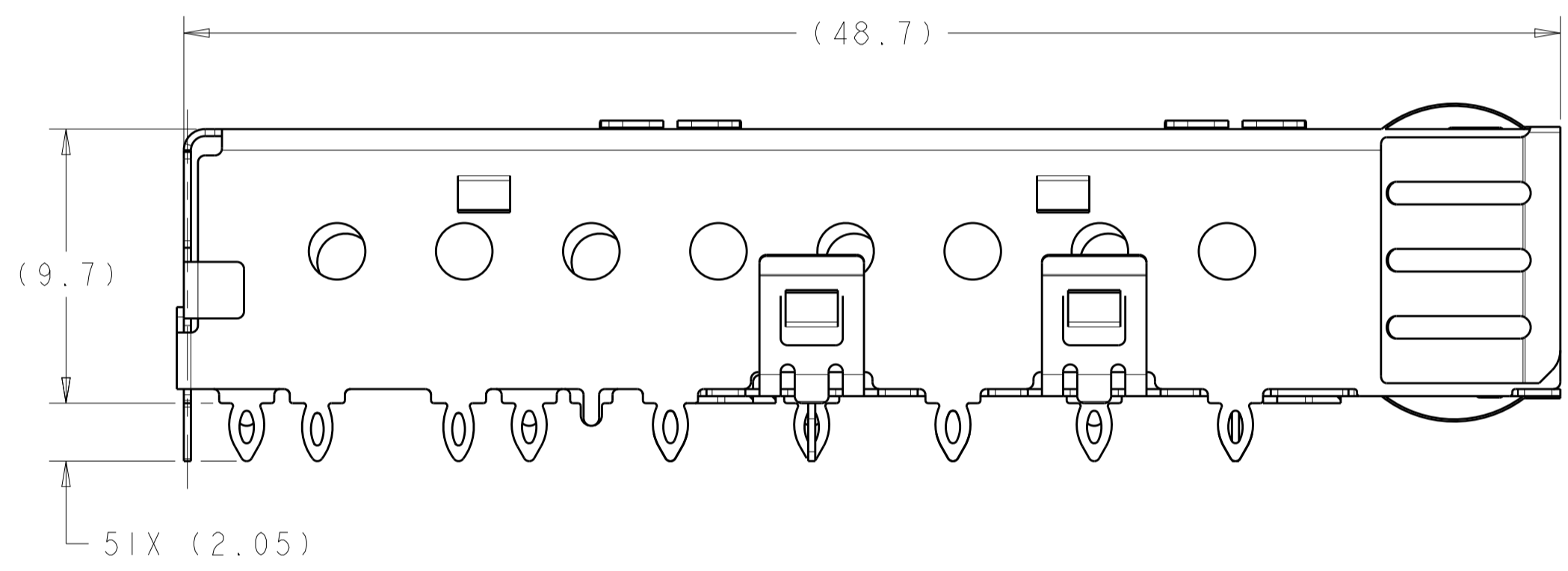


LOC	DIST	REVISIONS			
GP	00	REV	DATE	BY	CHK
B		REVISED PER ECO-09-022874	20OCT2009	CR	MS
C		RELEASED PER ECO-11-019224	09JAN2012	TX	AC
D		REVISED PER ECO-12-014021	29SEP2012	TD	AC

1. MATERIAL: CAGE ASSEMBLY: 0.25mm THICK NICKEL SILVER ALLOY.
EMI SPRINGS: COPPER ALLOY.
2. FINISH:
SPRINGS: MINIMUM OF 0.8um TIN PLATE OVER A MINIMUM OF 0.8um NICKEL UNDERPLATE.
NON-PLATED EDGES PERMISSIBLE.
3. MATES WITH SFP MSA COMPLIANT TRANSCEIVERS.
4. PADS AND VIAS CHASSIS GROUND.
5. INTERPRETATION OF DATUM REFERENCE FRAME IN ACCORDANCE WITH SECT 4.4.1.1 OF ASME Y14.5M-1994.
6. MINIMUM PCB BOARD THICKNESS:
SINGLE SIDED = 1.50
DOUBLE SIDED = 2.25
7. HOLE PATTERN REPEATS FOR EACH PORT. SPACING BETWEEN PORTS IS 14.25mm.
8. DATUM AND BASIC DIMENSION ESTABLISHED BY CUSTOMER.
9. REFERENCE APPLICATION SPEC. 114-13120, HOLE A, FOR RECOMMENDED DRILL HOLE DIAMETER AND PLATING THICKNESS.
10. REFERENCE APPLICATION SPEC. 114-13120, HOLE B, FOR RECOMMENDED DRILL HOLE DIAMETER AND PLATING THICKNESS.
11. CERTAIN MATING TRANSCEIVERS MAY REQUIRE ADDITIONAL PCB THICKNESS THAT WOULD BE DETERMINED BY THE CUSTOMER.
12. PRODUCT COMPLIES WITH SPECIFICATION SFF-8433 IMPROVED PLUGGABLE FORM FACTOR FOR SFP+ GANGED CAGES.



2007251-1
FINISHED ASSEMBLY
SCALE 4:1

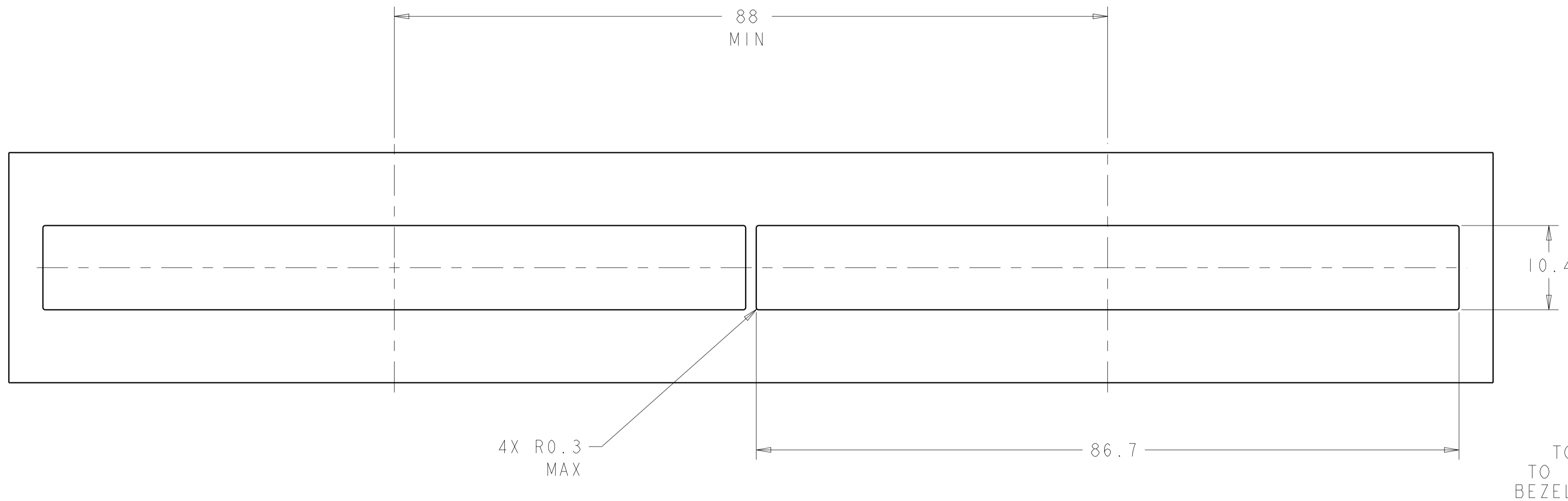


2007251-1
CAGE ASSEMBLY
MOUNTED BELLY TO BELLY ON PCB
SCALE 4:1

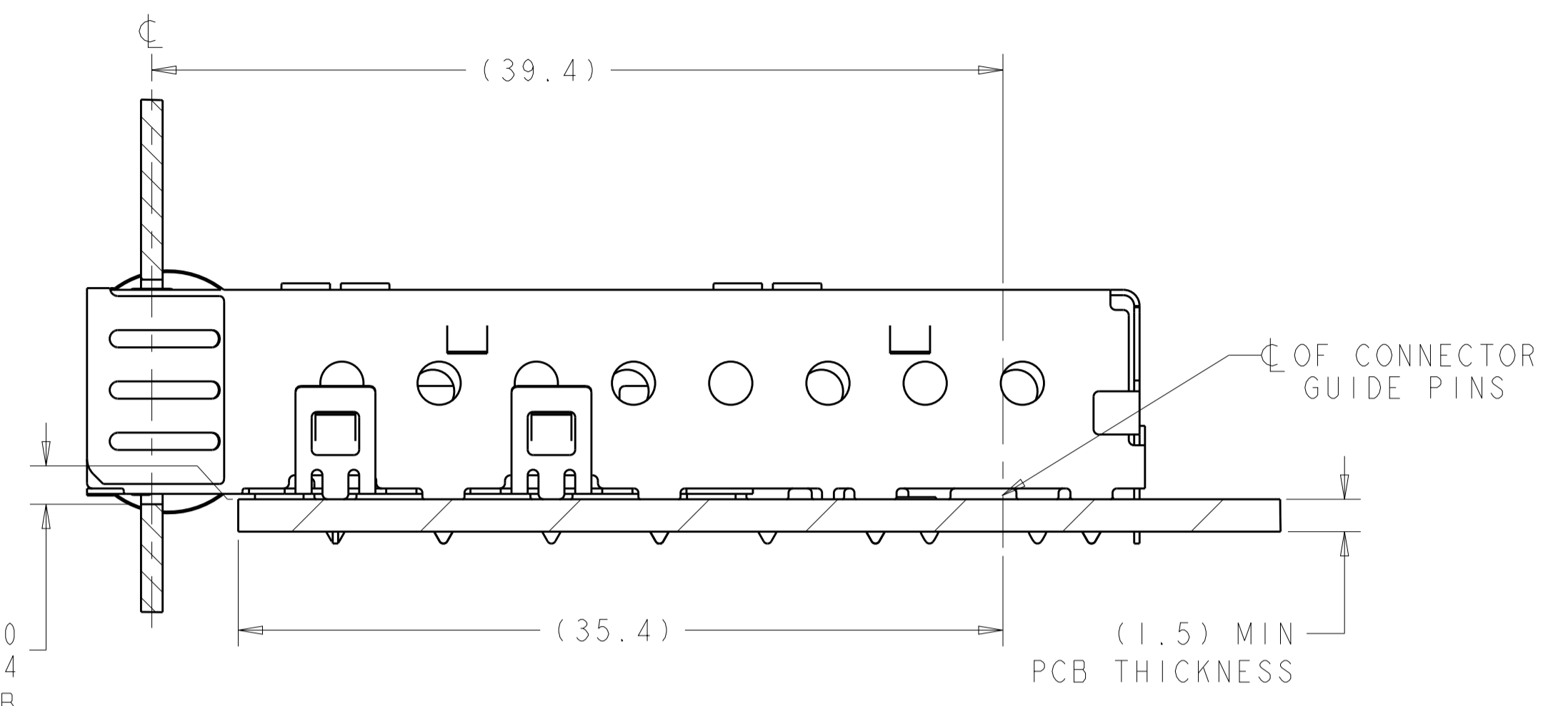
2007251-1
PART NUMBER

THIS DRAWING IS A CONTROLLED DOCUMENT.		OWN: Z.M.BEAM 17JUL2007	TE Connectivity
DIMENSIONS: mm		CHK: M.R.SCHMITT 17JUL2007	
TOLERANCES UNLESS OTHERWISE SPECIFIED:		APP'D: R.H.WERTZ 17JUL2007	
0 PLC ±0.1 1 PLC ±0.1 2 PLC ±0.1 3 PLC ±0.1 4 PLC ±0.1 ANGLES ±1°		PRODUCT SPEC: 108-2364 APPLICATION SPEC: 114-13120 WEIGHT: -	
MATERIAL:		NAME: SFP+ 1X6 PRINTED CIRCUIT BOARD BELLY TO BELLY APPLICATIONS SIZE: CAGE CODE DRAWING NO: A100779C=2007251 RESTRICTED TO: -	
FINISH:		Customer Drawing SCALE: 2:1 SHEET 1 OF 4 REV D	

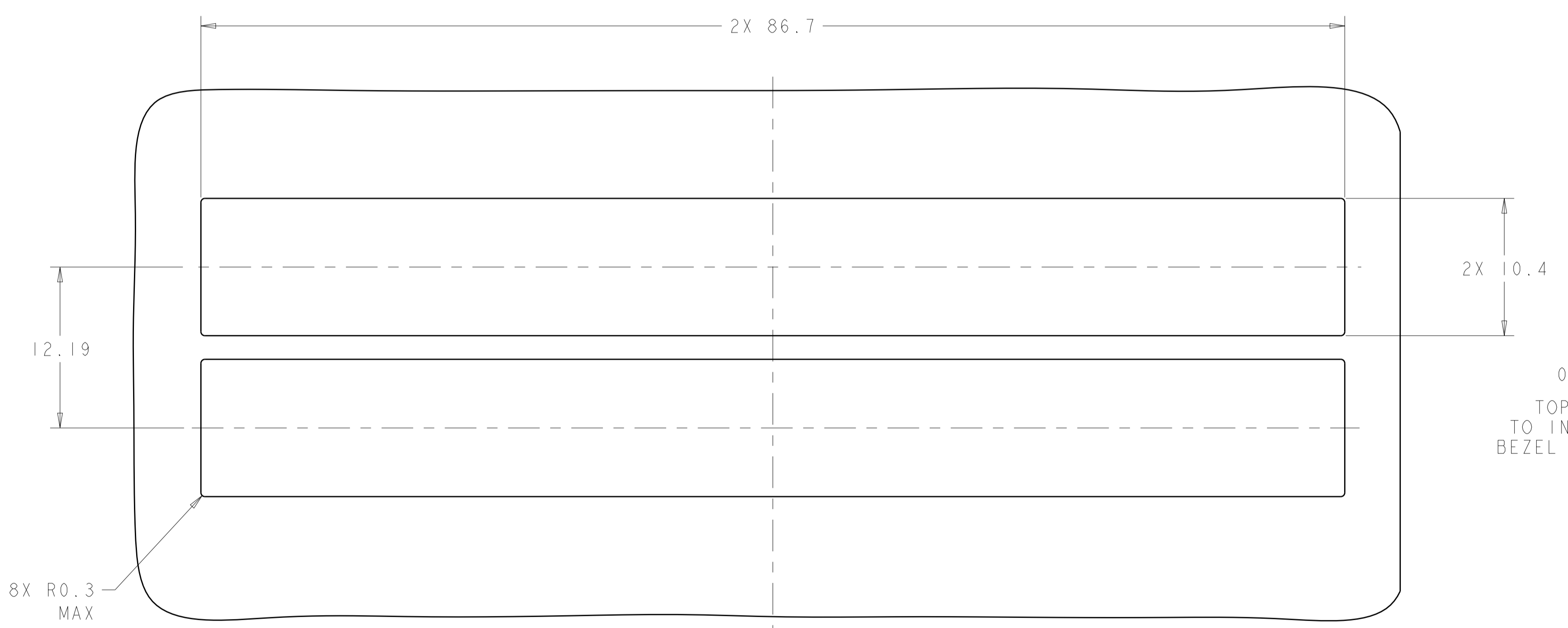
LOC		DIST		REVISIONS			
GP	00	P	LTN	DESCRIPTION	DATE	DMN	APVD
-	-	-	-	SEE SHEET 1	-	-	-



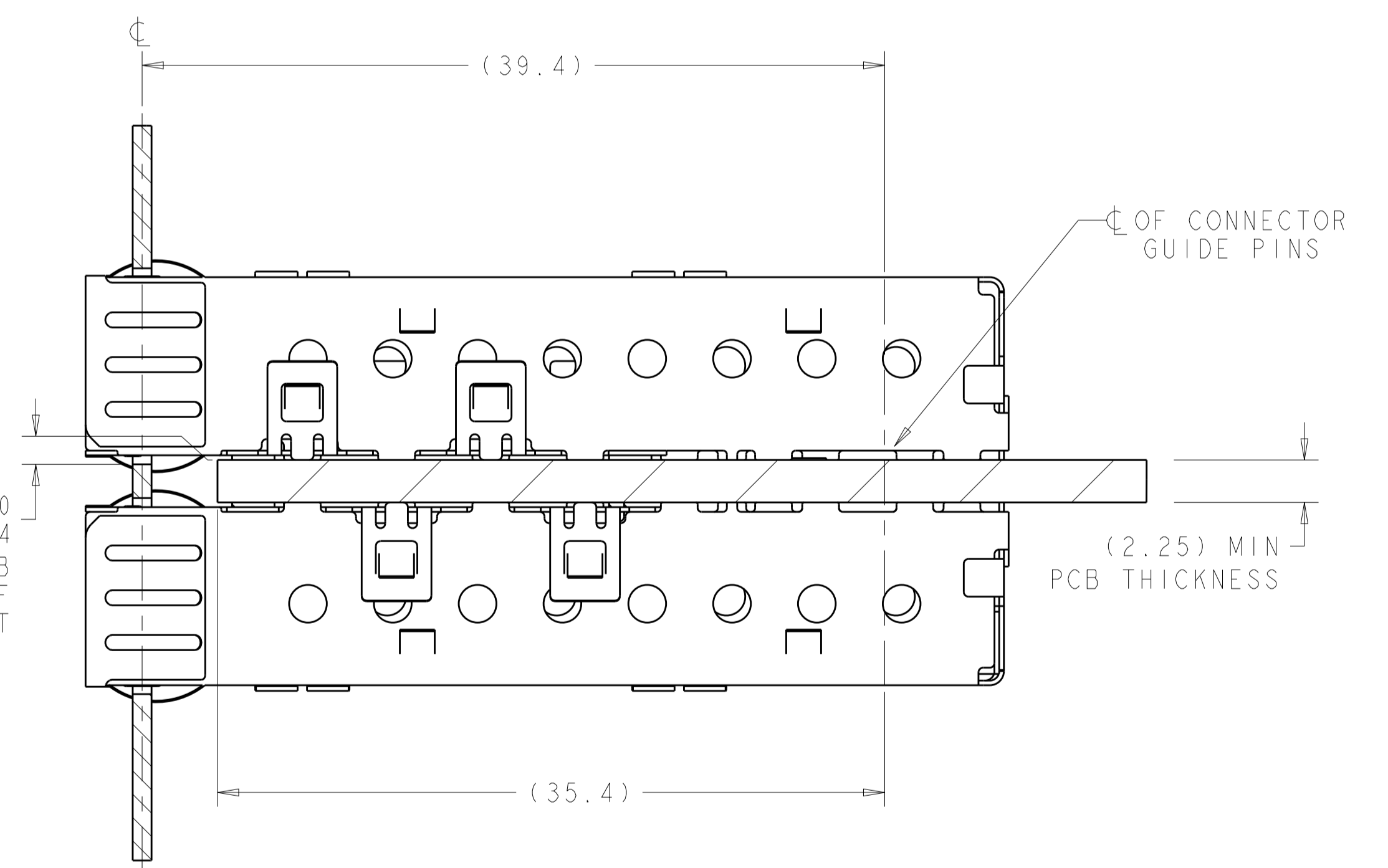
RECOMMENDED BEZEL CUT-OUT
 SINGLE SIDED APPLICATIONS
 SCALE 5:2



2007251-1
 MOUNTED ON PC BOARD
 SHOWN THRU RECOMMENDED BEZEL
 SCALE 4:1



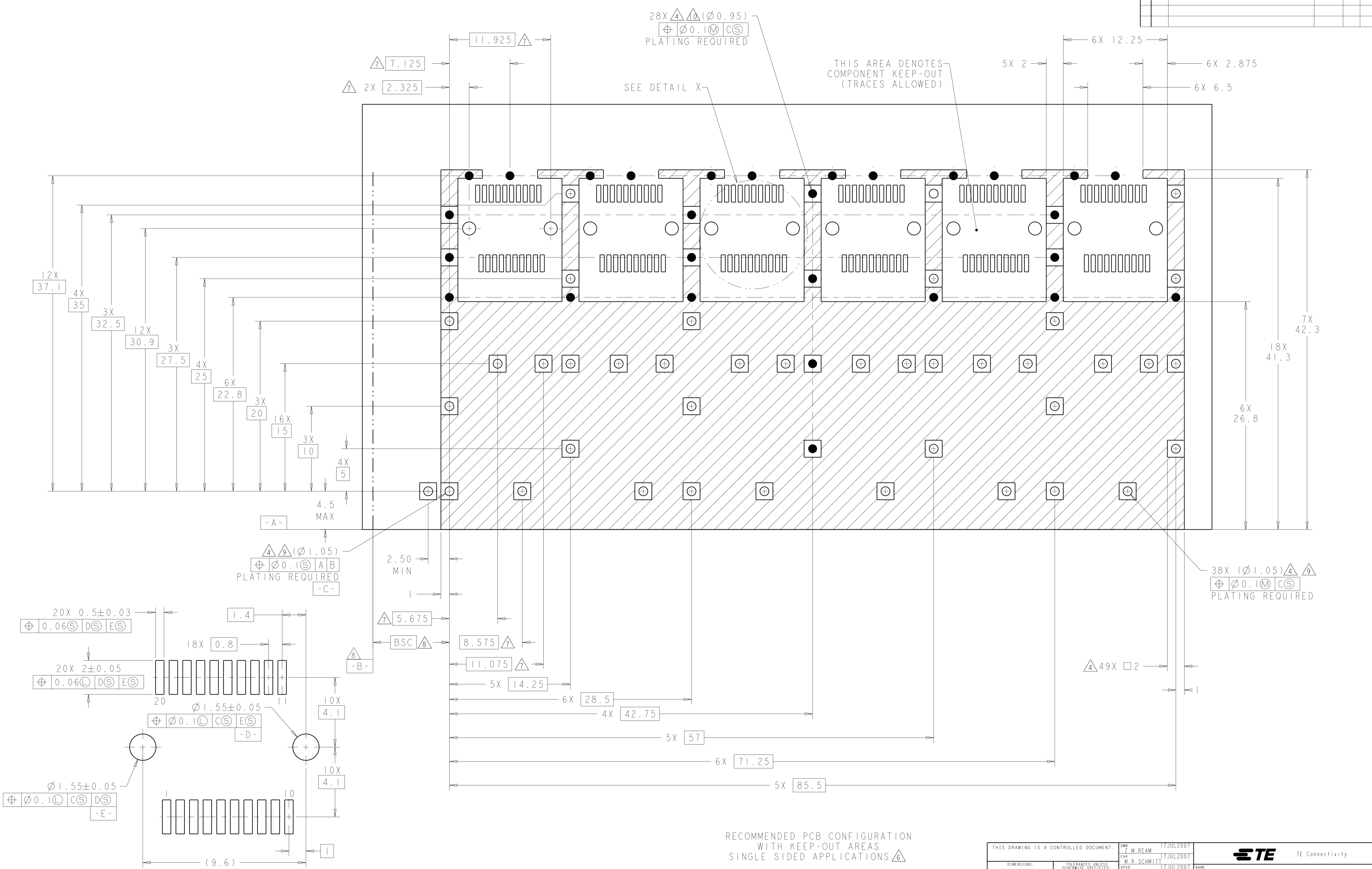
RECOMMENDED BEZEL CUT-OUT
 BELLY TO BELLY APPLICATIONS
 SCALE 4:1



2007251-1
 MOUNTED BELLY TO BELLY ON PC BOARD
 SHOWN THRU RECOMMENDED BEZEL
 SCALE 4:1

THIS DRAWING IS A CONTROLLED DOCUMENT.		DMN Z. M. BEAM 17JUL2007	TE Connectivity
DIMENSIONS:		CHK M. R. SCHMITT 17JUL2007	
mm	TOLERANCES UNLESS OTHERWISE SPECIFIED:	APVD B. H. WERTZ 17JUL2007	NAME SFP+ 1X6 PRINTED CIRCUIT BOARD BELLY TO BELLY APPLICATIONS
0 PLC	±0.1	PRODUCT SPEC	SIZE CAGE CODE DRAWING NO
1 PLC	±0.1	108-2364	A100779C=2007251
2 PLC	±0.1	APPLICATION SPEC	RESTRICTED TO
3 PLC	±0.1	114-13120	Customer Drawing
4 PLC	±0.1	WEIGHT	SCALE 2:1 SHEET 2 OF 4 REV D
ANGLES	±1°		
MATERIAL	FINISH		

LOC	DIST	REVISIONS					
GP	00	REV	LTN	DESCRIPTION	DATE	DWN	APVD
-	-	-	-	SEE SHEET 1	-	-	-



28X $\Delta 4 \Delta 9 (\varnothing 0.95)$
 $\oplus \varnothing 0.1 \text{M CS}$
PLATING REQUIRED

THIS AREA DENOTES
COMPONENT KEEP-OUT
(TRACES ALLOWED)

SEE DETAIL X

$\Delta 4 \Delta 9 (\varnothing 1.05)$
 $\oplus \varnothing 0.1 \text{S AB}$
PLATING REQUIRED
-C-

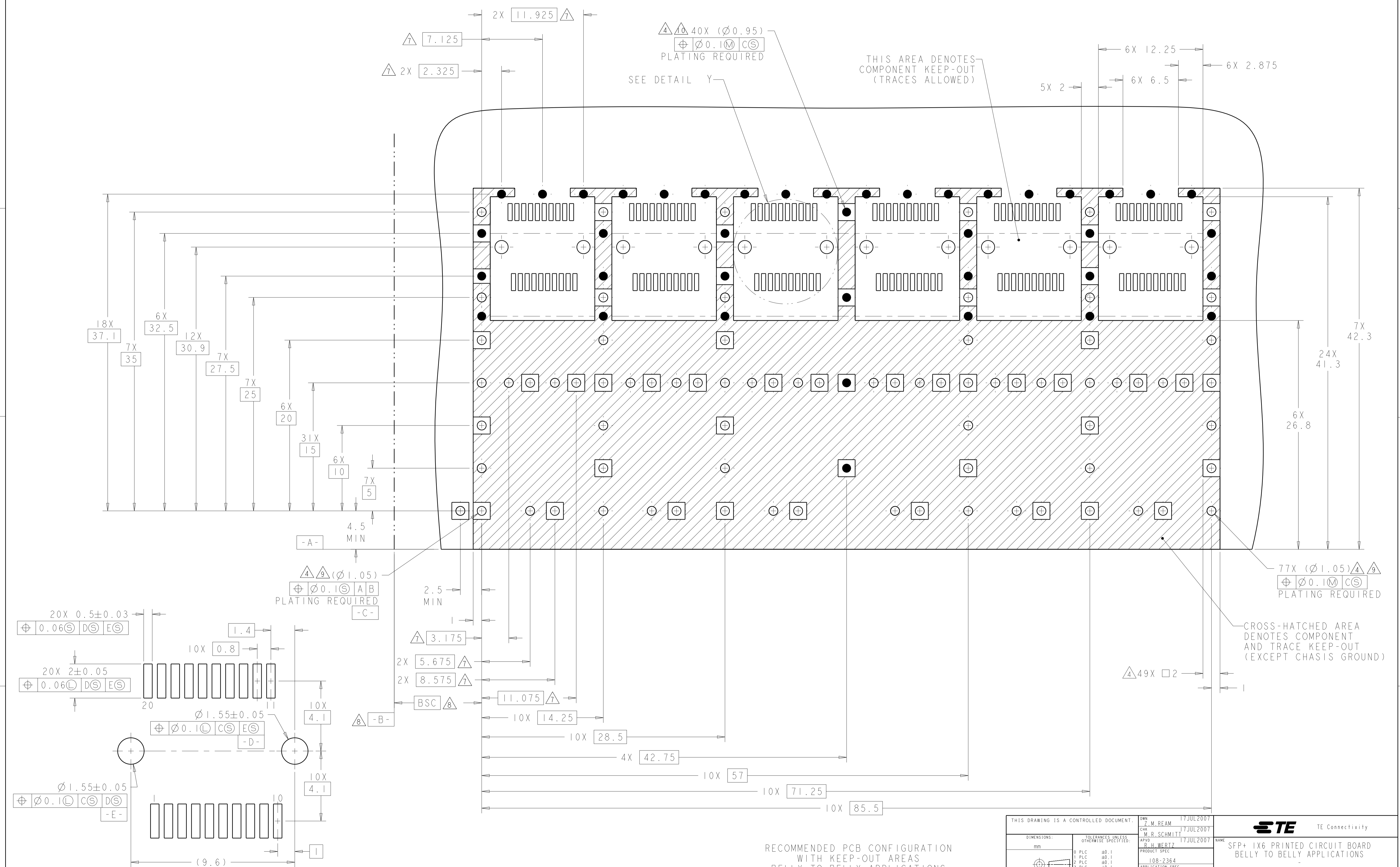
38X $(\varnothing 1.05) \Delta 4 \Delta 9$
 $\oplus \varnothing 0.1 \text{M CS}$
PLATING REQUIRED

RECOMMENDED PCB CONFIGURATION
WITH KEEP-OUT AREAS
SINGLE SIDED APPLICATIONS $\Delta 6$

DETAIL X
RECOMMENDED PT CONNECTOR LAYOUT
6X INDIVIDUALLY
SCALE 10:1

THIS DRAWING IS A CONTROLLED DOCUMENT.		DWN: Z. M. BEAM	17JUL2007
		CHK: M. R. SCHMITT	17JUL2007
		APVD: B. H. WERTZ	17JUL2007
DIMENSIONS:	TOLERANCES UNLESS OTHERWISE SPECIFIED:	NAME: SFP+ 1X6 PRINTED CIRCUIT BOARD BELLY TO BELLY APPLICATIONS	
mm	0 PLC ± 0.1 1 PLC ± 0.1 2 PLC ± 0.1 3 PLC ± 0.1 4 PLC ± 0.1 ANGLES ± 0.1	PRODUCT SPEC: 108-2364	SIZE: CAGE CODE DRAWING NO: 114-13120
	± 0.1 ± 0.1 ± 0.1 ± 0.1 ± 0.1 $\pm 10^\circ$	APPLICATION SPEC: 114-13120	RESTRICTED TO: A100779C=2007251
MATERIAL:	FINISH:	WEIGHT:	Customer Drawing
			SCALE: 2:1 SHEET: 3 OF 4 REV: D

LOC	DIST	REV	DATE	APPD
GP	00			
		DESCRIPTION	DATE	APPD
		SEE SHEET 1		



DETAIL Y
SCALE 10:1

RECOMMENDED PCB CONFIGURATION
WITH KEEP-OUT AREAS
BELLY TO BELLY APPLICATIONS

THIS DRAWING IS A CONTROLLED DOCUMENT.		OWN: Z. M. BEAM 17JUL2007	TE Connectivity NAME: SFP+ 1X6 PRINTED CIRCUIT BOARD BELLY TO BELLY APPLICATIONS
DIMENSIONS: mm		CHK: M. R. SCHMITT 17JUL2007	
TOLERANCES UNLESS OTHERWISE SPECIFIED:		APPD: B. H. WERTZ 17JUL2007	PRODUCT SPEC: 108-2364
0 PLC ±0.1			APPLICATION SPEC: 114-13120
1 PLC ±0.1			WEIGHT: -
2 PLC ±0.1			Customer Drawing
3 PLC ±0.1			SCALE: 2:1
4 PLC ±0.1			SHEET: 4 OF 4
ANGLES ±1°			REV: D
MATERIAL: -			
FINISH: -			