



Chipsmall Limited consists of a professional team with an average of over 10 year of expertise in the distribution of electronic components. Based in Hongkong, we have already established firm and mutual-benefit business relationships with customers from,Europe,America and south Asia,supplying obsolete and hard-to-find components to meet their specific needs.

With the principle of “Quality Parts,Customers Priority,Honest Operation,and Considerate Service”,our business mainly focus on the distribution of electronic components. Line cards we deal with include Microchip,ALPS,ROHM,Xilinx,Pulse,ON,Everlight and Freescale. Main products comprise IC,Modules,Potentiometer,IC Socket,Relay,Connector.Our parts cover such applications as commercial,industrial, and automotives areas.

We are looking forward to setting up business relationship with you and hope to provide you with the best service and solution. Let us make a better world for our industry!



## Contact us

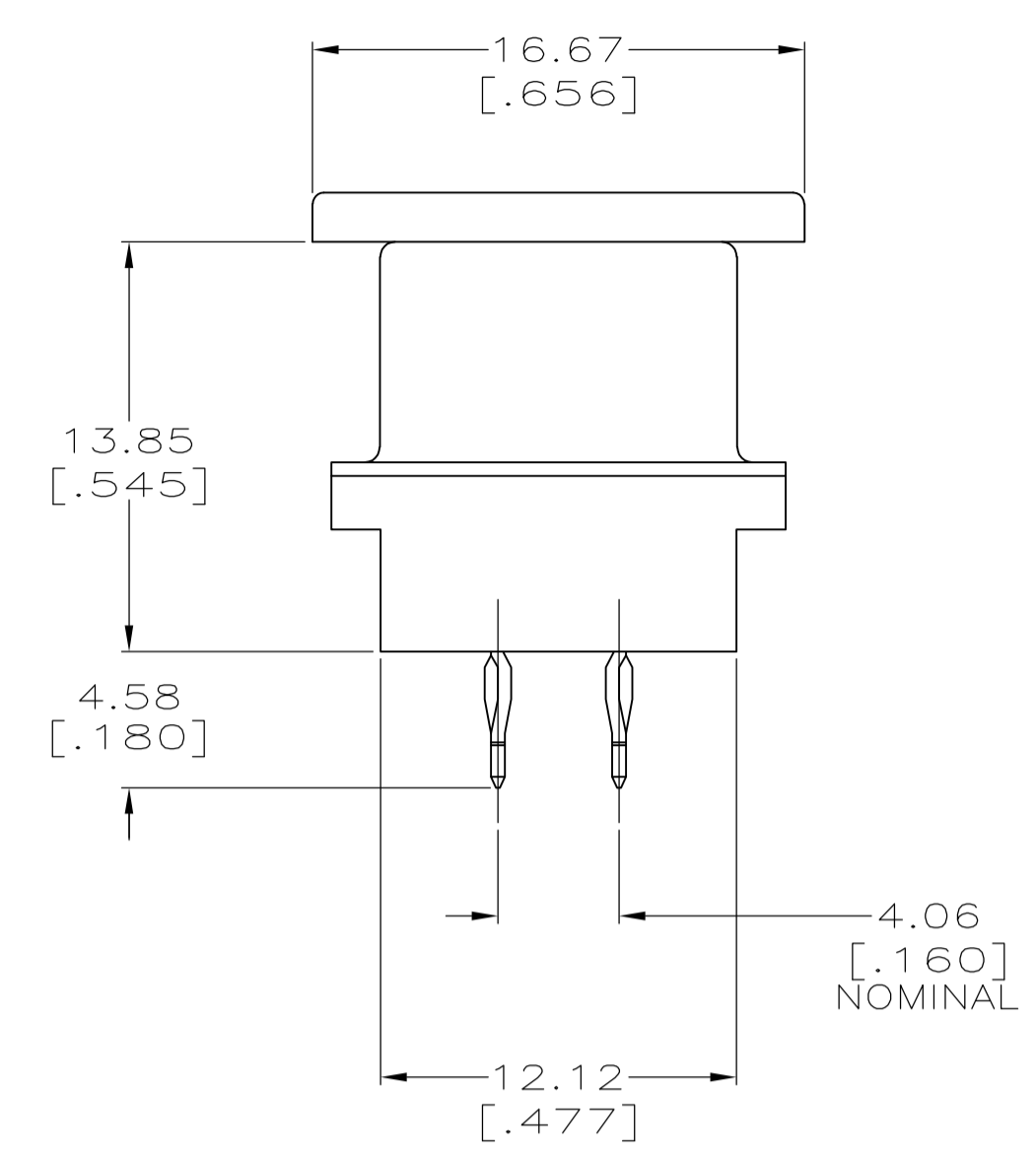
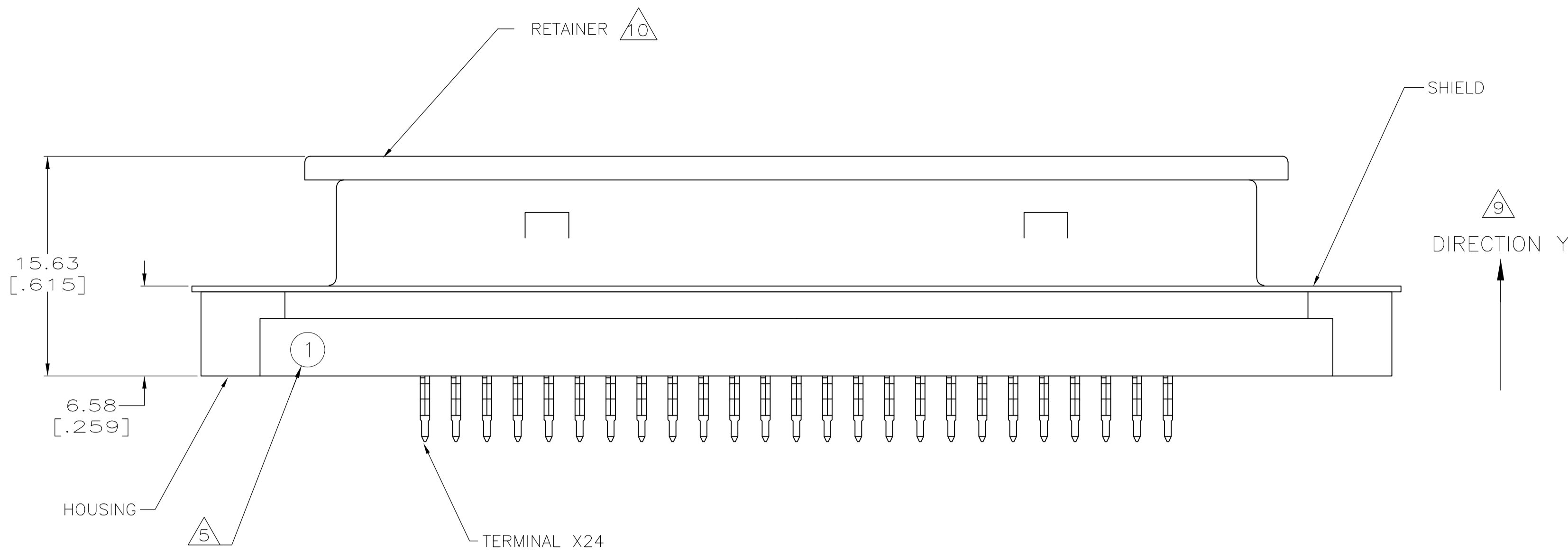
Tel: +86-755-8981 8866 Fax: +86-755-8427 6832

Email & Skype: info@chipsmall.com Web: www.chipsmall.com

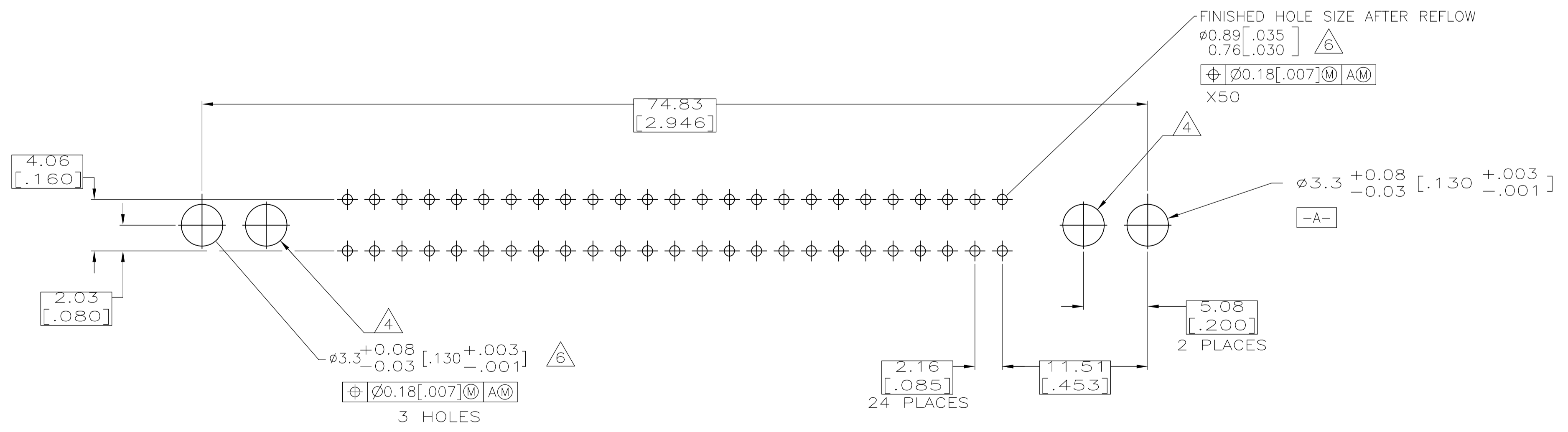
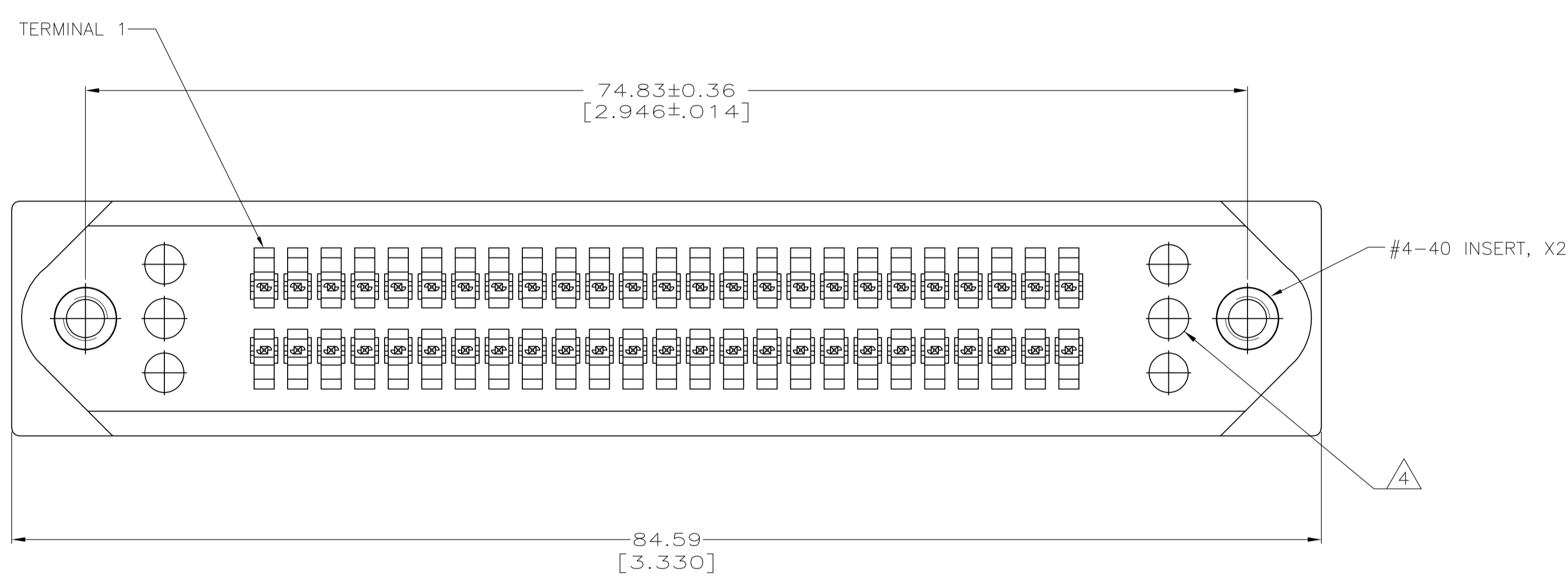
Address: A1208, Overseas Decoration Building, #122 Zhenhua RD., Futian, Shenzhen, China



LOC		DIST		REVISIONS			
GP	00	P	LTR	DESCRIPTION	DATE	DMN	APVD
A				RELEASED PER ECO-08-005121	29FEB2008	ZMR	WLM



- △ DIMENSIONS ARE MAXIMUM UNLESS OTHERWISE SPECIFIED.
- △ MATERIAL: HOUSING - POLYESTER, BLACK. TERMINALS - COPPER ALLOY PLATED WITH 0.76µm [.000030] MINIMUM GOLD ON MATING SURFACE AND 2.54µm [.000100] MINIMUM TIN-LEAD ON ACTION PIN AREA OVER 1.27µm [.000050] MINIMUM NICKEL UNDERPLATE OVER ENTIRE TERMINAL. RETAINER - POLYETHYLENE, NATURAL. SHIELD - CARBON STEEL, PLATED BRIGHT NICKEL 5.08µm [.000200] MINIMUM. INSERTS - ZINC PLATED BRASS.
- 3. THE CONTACT SURFACES OF THE TERMINALS ARE COATED WITH LUBRICANT.
- △ OPTIONAL MOUNTING HOLE FOR SELF-TAPPING SCREW.
- △ "1" ON HOUSING INDICATES LOCATION OF TERMINAL 1.
- △ ALL PLATED-THRU HOLES SHALL BE PER AMP SPEC 115-6072.
- △ 50 LBS MINIMUM FORCE REQUIRED TO UNSEAT CONNECTOR FROM PRINTED CIRCUIT BOARD WITHOUT USE OF HARDWARE.
- 8. CENTER-TO-CENTER SPACING OF TERMINALS IS 2.16 [.085] NOMINAL.
- △ INSERTS SHALL WITHSTAND A 222 N [50 LB] PULL FORCE IN DIRECTION Y.
- △ RETAINER MUST REMAIN INSTALLED UNTIL AFTER CONNECTOR HAS BEEN INSERTED INTO PCB HOLES.



PRINTED CIRCUIT BOARD MOUNTING DIMENSIONS

2007381-1  
PART NUMBER

THIS DRAWING IS A CONTROLLED DOCUMENT.		DIN Z.M.REAM 29FEB2008	Tyco Electronics Corporation Harrisburg, Pa 17105-3608	
DIMENSIONS: mm		CHK: W.L.MILLHIMES 29FEB2008	NAME: R.H.WERTZ 29FEB2008	
TOLERANCES UNLESS OTHERWISE SPECIFIED:		PRODUCT SPEC		
0 PLC	± -	APPLICATION SPEC		
1 PLC	± -	SIZE: A1		
2 PLC	± -	CAGE CODE: 00779		
3 PLC	± -	DRAWING NO: 2007381		
4 PLC	± -	RESTRICTED TO: -		
ANGLES	± -	CUSTOMER DRAWING		
MATERIAL	△ 2	SCALE: 4:1		SHEET: 1 of 1
FINISH	△ 2	REV: A		