



Chipsmall Limited consists of a professional team with an average of over 10 year of expertise in the distribution of electronic components. Based in Hongkong, we have already established firm and mutual-benefit business relationships with customers from,Europe,America and south Asia,supplying obsolete and hard-to-find components to meet their specific needs.

With the principle of “Quality Parts,Customers Priority,Honest Operation,and Considerate Service”,our business mainly focus on the distribution of electronic components. Line cards we deal with include Microchip,ALPS,ROHM,Xilinx,Pulse,ON,Everlight and Freescale. Main products comprise IC,Modules,Potentiometer,IC Socket,Relay,Connector.Our parts cover such applications as commercial,industrial, and automotives areas.

We are looking forward to setting up business relationship with you and hope to provide you with the best service and solution. Let us make a better world for our industry!



## Contact us

Tel: +86-755-8981 8866 Fax: +86-755-8427 6832

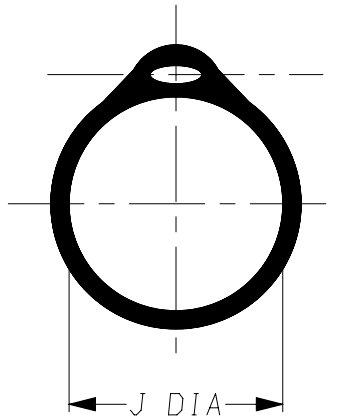
Email & Skype: info@chipsmall.com Web: www.chipsmall.com

Address: A1208, Overseas Decoration Building, #122 Zhenhua RD., Futian, Shenzhen, China

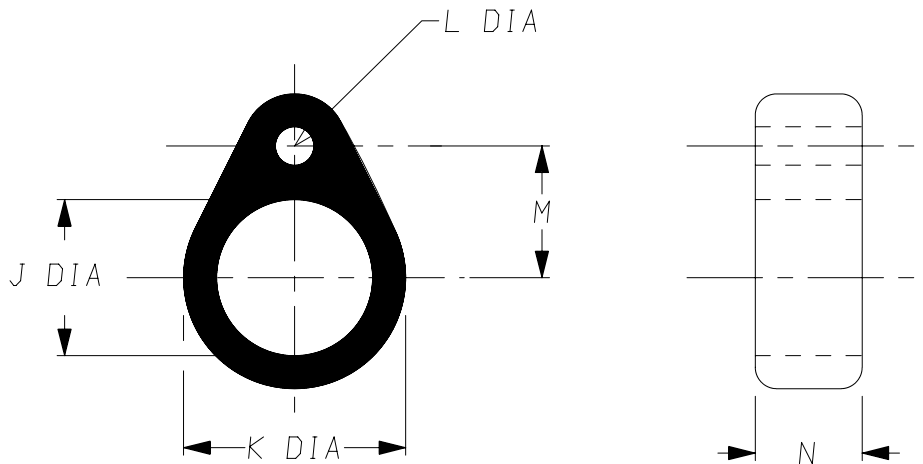


a) Part as supplied.

200W5\*\*



b) Part after unrestricted recovery.



DIMENSIONS in millimetres  
(in inches, for reference)

Part No.	J		K ±10% b	L ±10% b	M ±10% b	N ±10% b
	Min a	Max b				
200W511	7 (0.28)	5.0 (0.20)	10.8 (0.43)	3.5 (0.14)	7.15 (0.28)	10 (0.39)
200W521	11 (0.43)	7.0 (0.28)	12.6 (0.50)	3.5 (0.14)	8.05 (0.32)	10 (0.39)
200W531	15 (0.59)	11.0 (0.43)	16.5 (0.65)	3.5 (0.14)	10.00 (0.39)	10 (0.39)
200W542	20 (0.79)	15.0 (0.59)	20.2 (0.80)	3.5 (0.14)	11.85 (0.47)	10 (0.39)
200W552	25 (0.98)	20.0 (0.79)	25.0 (0.98)	3.5 (0.14)	14.25 (0.56)	10 (0.39)
200W562	32 (1.26)	20.0 (0.79)	27.0 (1.06)	4.0 (0.16)	16.00 (0.63)	10 (0.39)
200W572	38 (1.50)	29.0 (1.14)	37.0 (1.46)	4.0 (0.16)	20.50 (0.81)	10 (0.39)
200W582	46 (1.81)	36.0 (1.42)	48.0 (1.89)	4.0 (0.16)	26.00 (1.02)	10 (0.39)
200W592	50 (1.97)	45.0 (1.77)	57.0 (2.24)	4.0 (0.16)	31.50 (1.24)	10 (0.39)

Copyright (!)

The copyright in this drawing is the property of Tyco Electronics UK Ltd. The drawing is issued on the condition that it is not copied, reproduced or disclosed to a third party, either in whole or in part without the prior written consent of Tyco Electronics UK Ltd.

Drawn A.LILLEY. Checked

Issue 5

Date April 2007

Conforms to ISO Recommendations

3rd Angle Projection

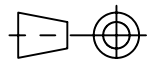
Not to Scale

Approval

Design

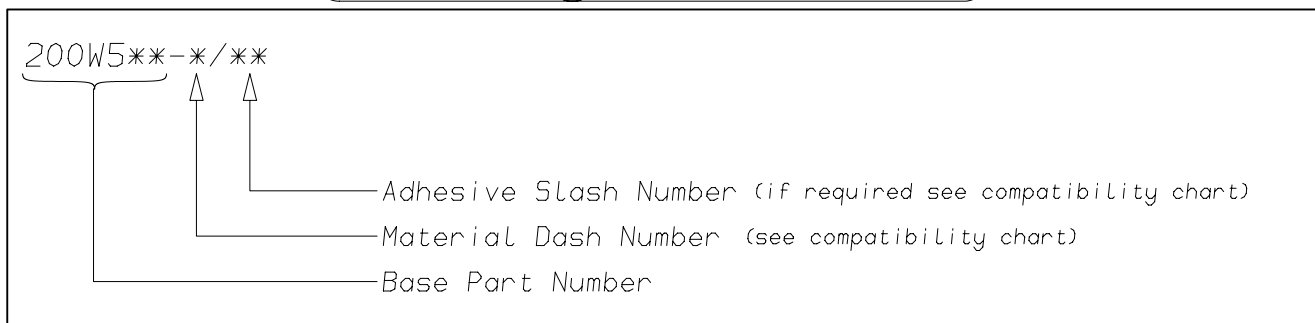
MKTG.

Q.A.



<b>Raychem</b>		<b>Specification Control Drawing</b>	Part Number <b>200W5**</b>	Issue 5
Iss.	Date	E.C.R. No.	Details of Change	
B	February 1980	****	Part number added	
C	February 1980	****	200W511 added	
D	April 1980	****	N dim was 8.0	
2	June 1982	3063	±10% tolerance added to K,L,M,N	
5	April 2007	CR07-HM-007	562,572 and 582,592 were on separate drawings	

## (Ordering Information)



## (COMPATIBILITY CHART)

Material Dash Number	Material Description	SPEC Number	Coating Slash Number
-3	POLYOLEFIN, SEMI-RIGID	RT-301, RK-6703	/42, /86, /180
-4	POLYOLEFIN, FLEXIBLE	RT-1304, RK-6704	/42, /86
-25	ELASTOMER, FLUID RESISTANT	RT-1325, RK-6713	/42, /86, /225
-130	POLYOLEFIN, COMMERCIAL FLEXIBLE	RW-2008	/42

### NOTES

- ① As supplied dimensions are for uncoated parts, when coating is added entry diameters will reduce by 1.5mm Max.
- ② High Strength Eyelet Rings  
Pull capability of 500n, can be used on cables or connectors.

Tyco Electronics UK Ltd. Faraday Road, Swindon, Wiltshire, SN3 5HH England Telephone: (01793) 528171 Fax: 572516	Tyco Electronics Corporation 300, Constitution Drive, Menlo Park, CA 94025 USA Telephone (650) 361-3860 Fax: (650) 361-5579
Cage Code K1010	Cage Code 06090