



Chipsmall Limited consists of a professional team with an average of over 10 year of expertise in the distribution of electronic components. Based in Hongkong, we have already established firm and mutual-benefit business relationships with customers from,Europe,America and south Asia,supplying obsolete and hard-to-find components to meet their specific needs.

With the principle of “Quality Parts,Customers Priority,Honest Operation,and Considerate Service”,our business mainly focus on the distribution of electronic components. Line cards we deal with include Microchip,ALPS,ROHM,Xilinx,Pulse,ON,Everlight and Freescale. Main products comprise IC,Modules,Potentiometer,IC Socket,Relay,Connector.Our parts cover such applications as commercial,industrial, and automotives areas.

We are looking forward to setting up business relationship with you and hope to provide you with the best service and solution. Let us make a better world for our industry!



Contact us

Tel: +86-755-8981 8866 Fax: +86-755-8427 6832

Email & Skype: info@chipsmall.com Web: www.chipsmall.com

Address: A1208, Overseas Decoration Building, #122 Zhenhua RD., Futian, Shenzhen, China

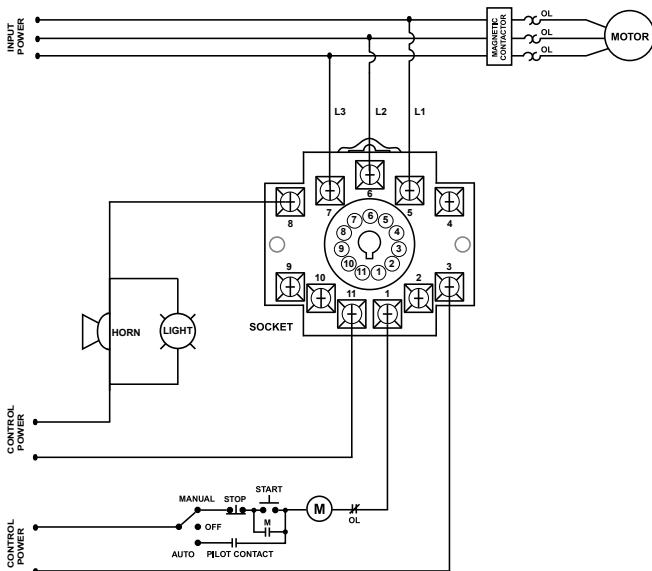


201-XXX-DPDT SERIES

3-phase voltage/phase monitor



Wiring Diagram



Description

The 201-xxx-DPDT Series is an 11-pin octal base plug-in voltage monitor designed to protect 3-phase motors regardless of size. The 201-100-DPDT is used on 95-120VAC, 50/60Hz motors and the 201-200-DPDT is used on 190-240VAC, 50/60Hz motors to prevent damage caused by incoming voltage problems. The units feature two isolated sets of contacts that are ideal for use with two control circuits with different voltages.

The unique microcontroller-based voltage and phase-sensing circuit constantly monitors the voltages to detect harmful power line conditions. When a harmful condition is detected, the MotorSaver's output relays are deactivated after a specified trip delay. The output relays reactivate after power line conditions return to an acceptable level and a specified amount of time has elapsed (restart delay). The trip delay prevents nuisance tripping due to rapidly fluctuating power line conditions.

This unit is also available with a shorter trip delay and faster restart delay. The 201-xxx-DPDT-60mS has a trip delay of 0.5 seconds and a restart delay of 60 milliseconds.

Features & Benefits

FEATURES	BENEFITS
Proprietary microcontroller based circuitry	Constantly monitors 3 phase voltage to protect against harmful line conditions, even before the motor is started
Compact design for 11-pin; DIN rail or surface mount	Allows flexibility in panel installation
Advanced LED indication	Provides diagnostics which can be used for troubleshooting and to determine relay status
Two isolated Form C relays (DPDT)	Ideal for use in systems which have two control circuits with different voltages

Accessories



OT11PC Octal Socket

11-pin surface & DIN rail mountable. Rated for 10A @ 300VAC

Ordering Information

MODEL	LINE VOLTAGE	DESCRIPTION
201-100-DPDT	95-120VAC	Fixed unbalance, trip delay 4s for low voltage fault and 2s for unbalance and phase loss, restart delay 2s
201-200-DPDT	190-240VAC	Fixed unbalance, trip delay 4s for low voltage fault and 2s for unbalance and phase loss, restart delay 2s
201-100-DPDT-60mS	95-120VAC	Fixed unbalance, trip delay 0.5s, restart delay 60mS

201-XXX-DPDT SERIES

Specifications

Input Characteristics

Line Voltage

201-100-DPDT,
201-100-DPDT-60mS 95-120VAC

201-200-DPDT,
201-200-DPDT-60mS 190-240VAC

Frequency 50/60Hz

Functional Characteristics

Low Voltage (% of setpoint)

Trip 90% +/-1%

Reset 93% +/-1%

Voltage Unbalance

Trip 6%

Reset. 4.5%

Trip Delay Times

Low Voltage 4 seconds

Unbalance, Phasing Faults 2 seconds

Models with -60ms option 0.5 second

Restart Delay Times

After a Fault or Complete

Power Loss 2 seconds

Models with -60mS option 60 milliseconds

Output Characteristics

Output Contact Rating (DPDT)

Pilot Duty 480VA @ 240VAC

General Purpose 10A @ 240VAC

General Characteristics

Temperature Range -40° to 70°C (-40° to 158°F)

Maximum Input Power 5 W

Standards Passed

Electrostatic Discharge (ESD) IEC 61000-4-2, Level 3, 6kV contact, 8kV air

Radio Frequency

Immunity, Radiated 150MHz, 10V/m

Fast Transient Burst IEC 61000-4-4, Level 3, 2.5kV input power

Safety Marks

**UL (OT11PC octal
socket required)** UL508 (File #E68520)

CE IEC 60947-6-2

Dimensions

H 44.45 mm (1.75"); **W** 60.33 mm (2.38");

D 104.78 mm (4.125")

Weight

0.65 lb. (10.4 oz., 294.84 g)

Mounting Method

DIN rail or surface mount (plug in to
OT11PC socket)

Socket Available

Model OT11PC (UL Rated 300V)

The 300V socket can be surface mounted or installed on DIN Rail.

Must use Model OT11PC socket for UL Rating!

*Note: Manufacturer's recommended screw terminal torque for the RB Series and OT Series Octal Sockets is 12 in.-lbs.