



Chipsmall Limited consists of a professional team with an average of over 10 year of expertise in the distribution of electronic components. Based in Hongkong, we have already established firm and mutual-benefit business relationships with customers from,Europe,America and south Asia,supplying obsolete and hard-to-find components to meet their specific needs.

With the principle of "Quality Parts,Customers Priority,Honest Operation,and Considerate Service",our business mainly focus on the distribution of electronic components. Line cards we deal with include Microchip,ALPS,ROHM,Xilinx,Pulse,ON,Everlight and Freescale. Main products comprise IC,Modules,Potentiometer,IC Socket,Relay,Connector.Our parts cover such applications as commercial,industrial, and automotives areas.

We are looking forward to setting up business relationship with you and hope to provide you with the best service and solution. Let us make a better world for our industry!



Contact us

Tel: +86-755-8981 8866 Fax: +86-755-8427 6832

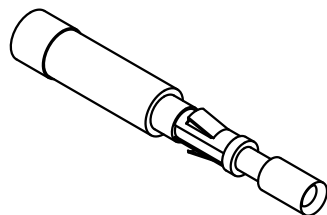
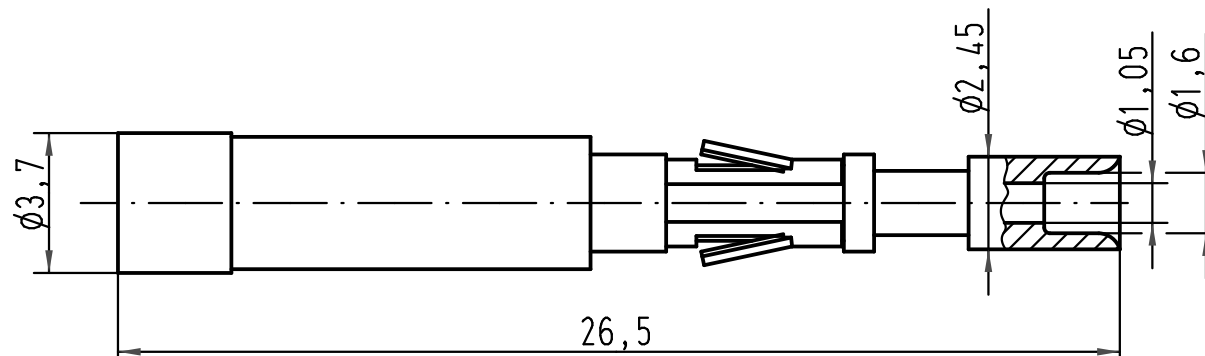
Email & Skype: info@chipsmall.com Web: www.chipsmall.com



Address: A1208, Overseas Decoration Building, #122 Zhenhua RD., Futian, Shenzhen, China



für Kontakteinsatz:
for insert:

Han 24 DD
Han 42 DD
Han 72 DD
Han 108 DD
Han 144 DD
Han 216 DD
Han K8/24
Han K6/36
Han K12/2
Han DD module
Han DDD module
Han R15
Han Q7/0
Han Q17



 All Dimensions in mm Original Size DIN A 4			Techn. Character.			Nicht tolerierte Maße/ Free size tolerances	
				Dat.	Name	Maßstab/ Scale 5:1	LWL-Kontaktbuchse/ FOC Female contact für 1mm Kunststoff Faser for 1mm plastic fibre
			Detail.	09.03.01	DY		
			Insp.		SDT		
414062	11.08.08	Rull	Stand.				
413262	10.10.07	Ho	HARTING Electric GmbH & Co. KG D-32339 Espelkamp				TB 20 10 001 3221
29295							
Mod.	Dat.	Name				Sub.	Blatt/ page