



Chipsmall Limited consists of a professional team with an average of over 10 year of expertise in the distribution of electronic components. Based in Hongkong, we have already established firm and mutual-benefit business relationships with customers from,Europe,America and south Asia,supplying obsolete and hard-to-find components to meet their specific needs.

With the principle of “Quality Parts,Customers Priority,Honest Operation,and Considerate Service”,our business mainly focus on the distribution of electronic components. Line cards we deal with include Microchip,ALPS,ROHM,Xilinx,Pulse,ON,Everlight and Freescale. Main products comprise IC,Modules,Potentiometer,IC Socket,Relay,Connector.Our parts cover such applications as commercial,industrial, and automotives areas.

We are looking forward to setting up business relationship with you and hope to provide you with the best service and solution. Let us make a better world for our industry!



Contact us

Tel: +86-755-8981 8866 Fax: +86-755-8427 6832

Email & Skype: info@chipsmall.com Web: www.chipsmall.com

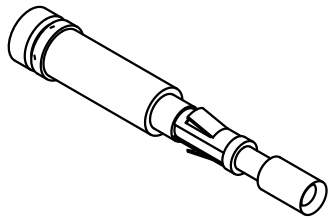
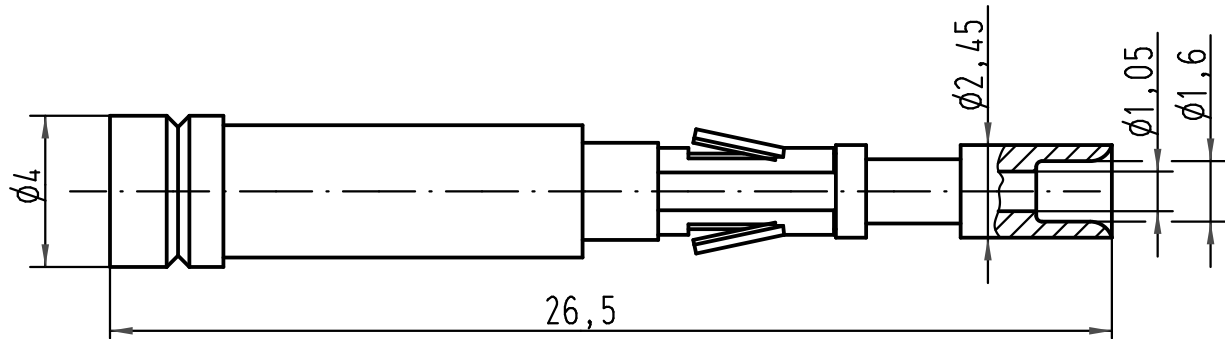
Address: A1208, Overseas Decoration Building, #122 Zhenhua RD., Futian, Shenzhen, China



1 2 3 4 5 6

für Kontakteinsatz:
for insert:

- Han 7 D
- Han 8 D
- Han 15 D
- Han 25 D
- Han 40 D
- Han 50 D
- Han 64 D
- Han 80 D
- Han 128 D



All Dimensions in mm Original Size DIN A 4			Techn. Character.			Nicht tolerierte Maßel/Free size tolerances		
				Dat.	Name	Maßstab/Scale 5:1	LWL-Kontaktbuchse/FOC Female contact für 1mm Kunststoff Faser for 1mm plastic fibre	
			Detail.	09.03.01	DY			
			Insp.		SDT			
414062	11.08.08	Rull	Stand.					
413262	10.10.07	Ho	HARTING Electric GmbH & Co. KG				TB 20 10 001 3222	
29295			D-32339 Espelkamp					
Mod.	Dat.	Name						
							Sub.	Blatt/ page