



Chipsmall Limited consists of a professional team with an average of over 10 year of expertise in the distribution of electronic components. Based in Hongkong, we have already established firm and mutual-benefit business relationships with customers from,Europe,America and south Asia,supplying obsolete and hard-to-find components to meet their specific needs.

With the principle of “Quality Parts,Customers Priority,Honest Operation,and Considerate Service”,our business mainly focus on the distribution of electronic components. Line cards we deal with include Microchip,ALPS,ROHM,Xilinx,Pulse,ON,Everlight and Freescale. Main products comprise IC,Modules,Potentiometer,IC Socket,Relay,Connector.Our parts cover such applications as commercial,industrial, and automotives areas.

We are looking forward to setting up business relationship with you and hope to provide you with the best service and solution. Let us make a better world for our industry!



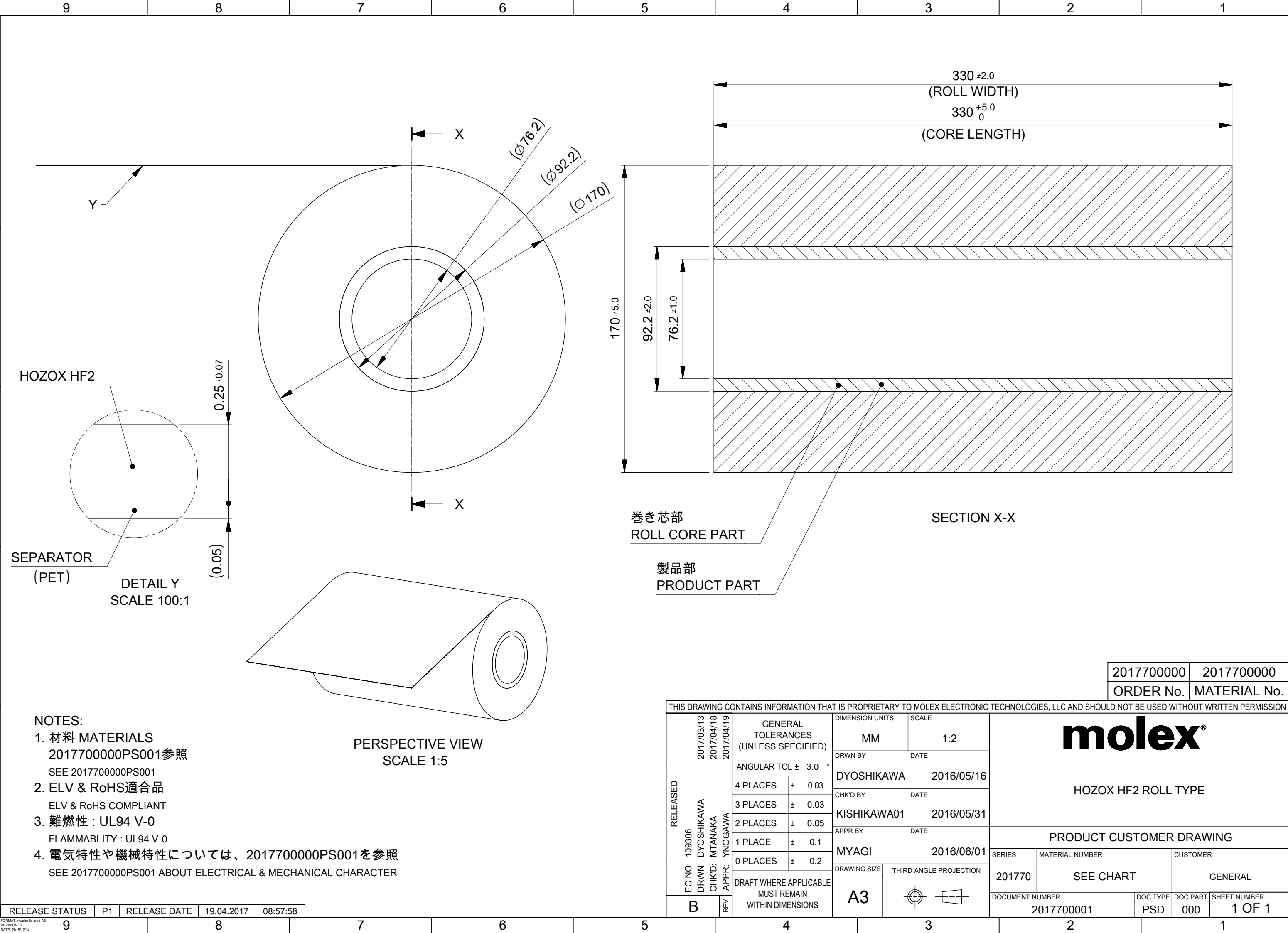
## Contact us

Tel: +86-755-8981 8866 Fax: +86-755-8427 6832

Email & Skype: [info@chipsmall.com](mailto:info@chipsmall.com) Web: [www.chipsmall.com](http://www.chipsmall.com)

Address: A1208, Overseas Decoration Building, #122 Zhenhua RD., Futian, Shenzhen, China





NOTES:  
1. 材料 MATERIALS  
2017700000PS001参照  
SEE 2017700000PS001  
2. ELV & RoHS適合品  
ELV & RoHS COMPLIANT  
3. 難燃性 : UL94 V-0  
FLAMMABLITY : UL94 V-0  
4. 電気特性や機械特性については、2017700000PS001を参照  
SEE 2017700000PS001 ABOUT ELECTRICAL & MECHANICAL CHARACTER

RELEASE STATUS	P1	RELEASE DATE	19.04.2017	08:57:58
----------------	----	--------------	------------	----------

FORMAT: master-B-prod-A3  
REVISION: G  
DATE: 2015/12/14

2017700000	2017700000
ORDER No.	MATERIAL No.

THIS DRAWING CONTAINS INFORMATION THAT IS PROPRIETARY TO MOLEX ELECTRONIC TECHNOLOGIES, LLC AND SHOULD NOT BE USED WITHOUT WRITTEN PERMISSION																																					
RELEASED EC NO: 109306 DRWN: DYOSHIKAWA CHK'D: MTANAKA APPR: YNOGAWA	2017/03/13 2017/04/18 2017/04/19	GENERAL TOLERANCES (UNLESS SPECIFIED)		DIMENSION UNITS		SCALE		<div>molex®</div> <div>HOZOX HF2 ROLL TYPE</div>																													
				MM		1:2																															
		ANGULAR TOL ± 3.0 °		DRWN BY		DATE		<div>PRODUCT CUSTOMER DRAWING</div> <table><tr><td>SERIES</td><td colspan="2">MATERIAL NUMBER</td><td colspan="3">CUSTOMER</td></tr><tr><td>201770</td><td colspan="2">SEE CHART</td><td colspan="3">GENERAL</td></tr><tr><td colspan="2">DOCUMENT NUMBER</td><td>DOC TYPE</td><td>DOC PART</td><td colspan="2">SHEET NUMBER</td></tr><tr><td colspan="2">2017700001</td><td>PSD</td><td>000</td><td colspan="2">1 OF 1</td></tr></table>						SERIES	MATERIAL NUMBER		CUSTOMER			201770	SEE CHART		GENERAL			DOCUMENT NUMBER		DOC TYPE	DOC PART	SHEET NUMBER		2017700001		PSD	000	1 OF 1	
		SERIES	MATERIAL NUMBER		CUSTOMER																																
		201770	SEE CHART		GENERAL																																
		DOCUMENT NUMBER		DOC TYPE	DOC PART	SHEET NUMBER																															
		2017700001		PSD	000	1 OF 1																															
		4 PLACES ± 0.03		DYOSHIKAWA		2016/05/16																															
		3 PLACES ± 0.03		CHK'D BY		DATE																															
		2 PLACES ± 0.05		KISHIKAWA01		2016/05/31																															
1 PLACE ± 0.1		APPR BY		DATE																																	
0 PLACES ± 0.2		MYAGI		2016/06/01																																	
DRAFT WHERE APPLICABLE MUST REMAIN WITHIN DIMENSIONS		DRAWING SIZE		THIRD ANGLE PROJECTION		<table><tr><td>A3</td><td></td></tr></table>						A3																									
		A3																																			