



Chipsmall Limited consists of a professional team with an average of over 10 year of expertise in the distribution of electronic components. Based in Hongkong, we have already established firm and mutual-benefit business relationships with customers from,Europe,America and south Asia,supplying obsolete and hard-to-find components to meet their specific needs.

With the principle of “Quality Parts,Customers Priority,Honest Operation,and Considerate Service”,our business mainly focus on the distribution of electronic components. Line cards we deal with include Microchip,ALPS,ROHM,Xilinx,Pulse,ON,Everlight and Freescale. Main products comprise IC,Modules,Potentiometer,IC Socket,Relay,Connector.Our parts cover such applications as commercial,industrial, and automotives areas.

We are looking forward to setting up business relationship with you and hope to provide you with the best service and solution. Let us make a better world for our industry!



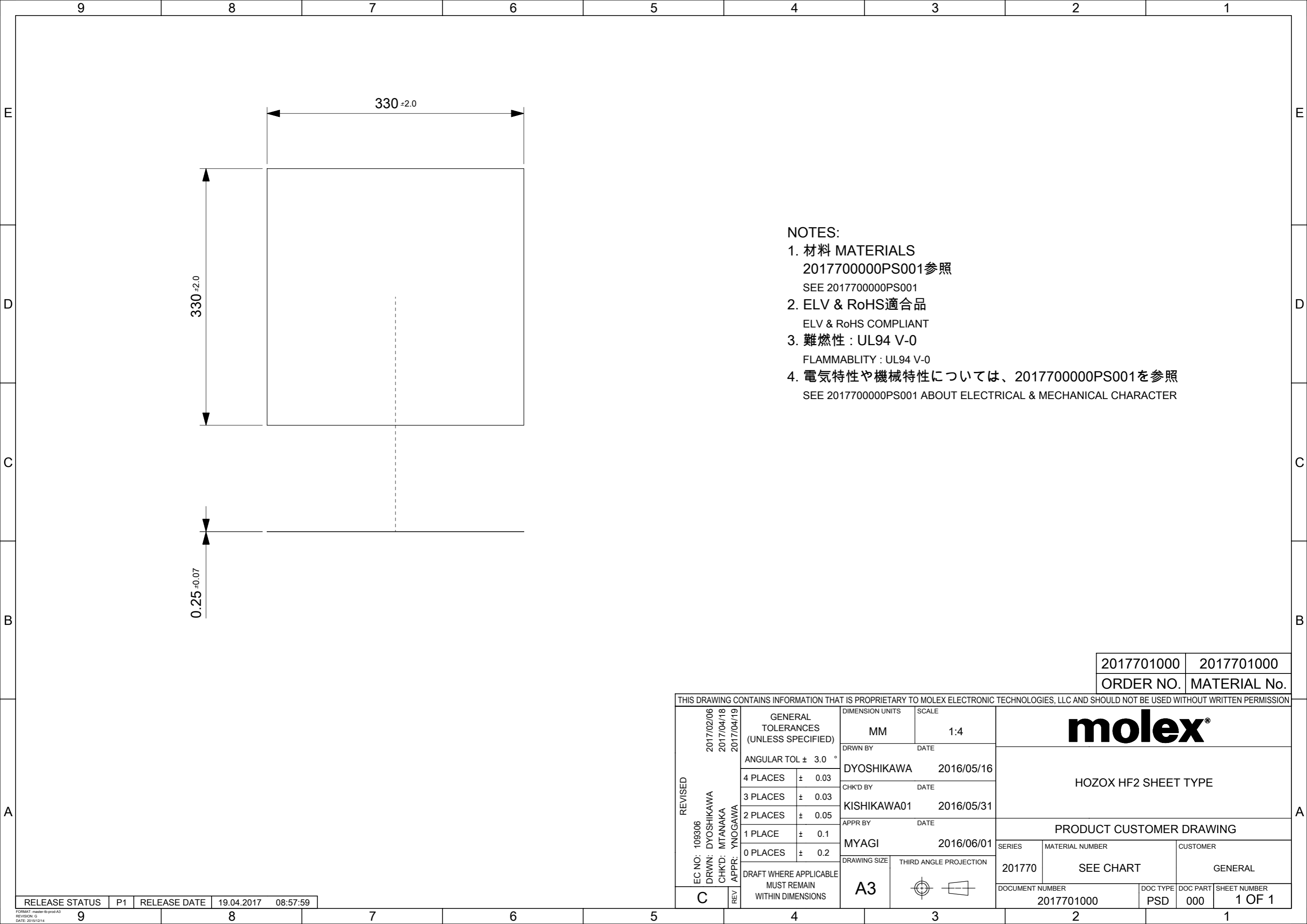
Contact us

Tel: +86-755-8981 8866 Fax: +86-755-8427 6832

Email & Skype: info@chipsmall.com Web: www.chipsmall.com

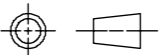
Address: A1208, Overseas Decoration Building, #122 Zhenhua RD., Futian, Shenzhen, China





- NOTES:
- 1. 材料 MATERIALS
2017700000PS001参照
SEE 2017700000PS001
 - 2. ELV & RoHS適合品
ELV & RoHS COMPLIANT
 - 3. 難燃性 : UL94 V-0
FLAMMABLITY : UL94 V-0
 - 4. 電気特性や機械特性については、2017700000PS001を参照
SEE 2017700000PS001 ABOUT ELECTRICAL & MECHANICAL CHARACTER

2017701000	2017701000
ORDER NO.	MATERIAL No.

THIS DRAWING CONTAINS INFORMATION THAT IS PROPRIETARY TO MOLEX ELECTRONIC TECHNOLOGIES, LLC AND SHOULD NOT BE USED WITHOUT WRITTEN PERMISSION														
REVISED	EC NO: 109306 DRWN: DYOSHIKAWA CHK'D: MTANAKA APPR: YNOGAWA	2017/02/06 2017/04/18 2017/04/19	GENERAL TOLERANCES (UNLESS SPECIFIED)		DIMENSION UNITS		SCALE		<div>molex[®]</div>					
					MM		1:4							
			ANGULAR TOL ± 3.0 °		DRWN BY		DATE		HOZOX HF2 SHEET TYPE					
					DYOSHIKAWA		2016/05/16							
			4 PLACES ± 0.03		CHK'D BY		DATE		PRODUCT CUSTOMER DRAWING					
			3 PLACES ± 0.03		KISHIKAWA01		2016/05/31							
			2 PLACES ± 0.05		APPR BY		DATE		SERIES					
			1 PLACE ± 0.1		MYAGI		2016/06/01							
			0 PLACES ± 0.2		DRAWING SIZE		THIRD ANGLE PROJECTION		201770		MATERIAL NUMBER SEE CHART		CUSTOMER GENERAL	
			DRAFT WHERE APPLICABLE MUST REMAIN WITHIN DIMENSIONS		A3									
C	REV						DOCUMENT NUMBER 2017701000				DOC TYPE PSD	DOC PART 000	SHEET NUMBER 1 OF 1	

RELEASE STATUS	P1	RELEASE DATE	19.04.2017	08:57:59
----------------	----	--------------	------------	----------

FORMAT: master-B-prod-A3
REVISION: G
DATE: 2015/12/14