



Chipsmall Limited consists of a professional team with an average of over 10 year of expertise in the distribution of electronic components. Based in Hongkong, we have already established firm and mutual-benefit business relationships with customers from,Europe,America and south Asia,supplying obsolete and hard-to-find components to meet their specific needs.

With the principle of "Quality Parts,Customers Priority,Honest Operation,and Considerate Service",our business mainly focus on the distribution of electronic components. Line cards we deal with include Microchip,ALPS,ROHM,Xilinx,Pulse,ON,Everlight and Freescale. Main products comprise IC,Modules,Potentiometer,IC Socket,Relay,Connector.Our parts cover such applications as commercial,industrial, and automotives areas.

We are looking forward to setting up business relationship with you and hope to provide you with the best service and solution. Let us make a better world for our industry!



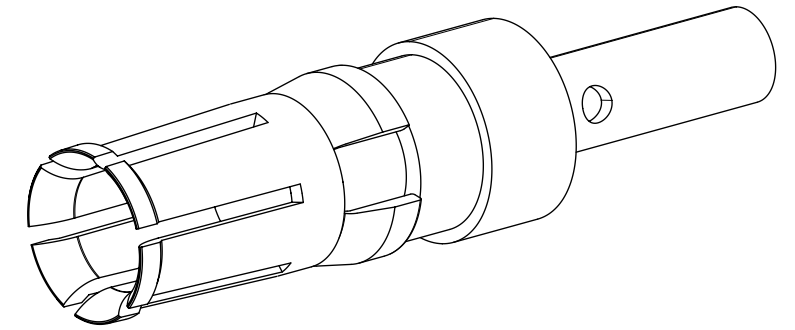
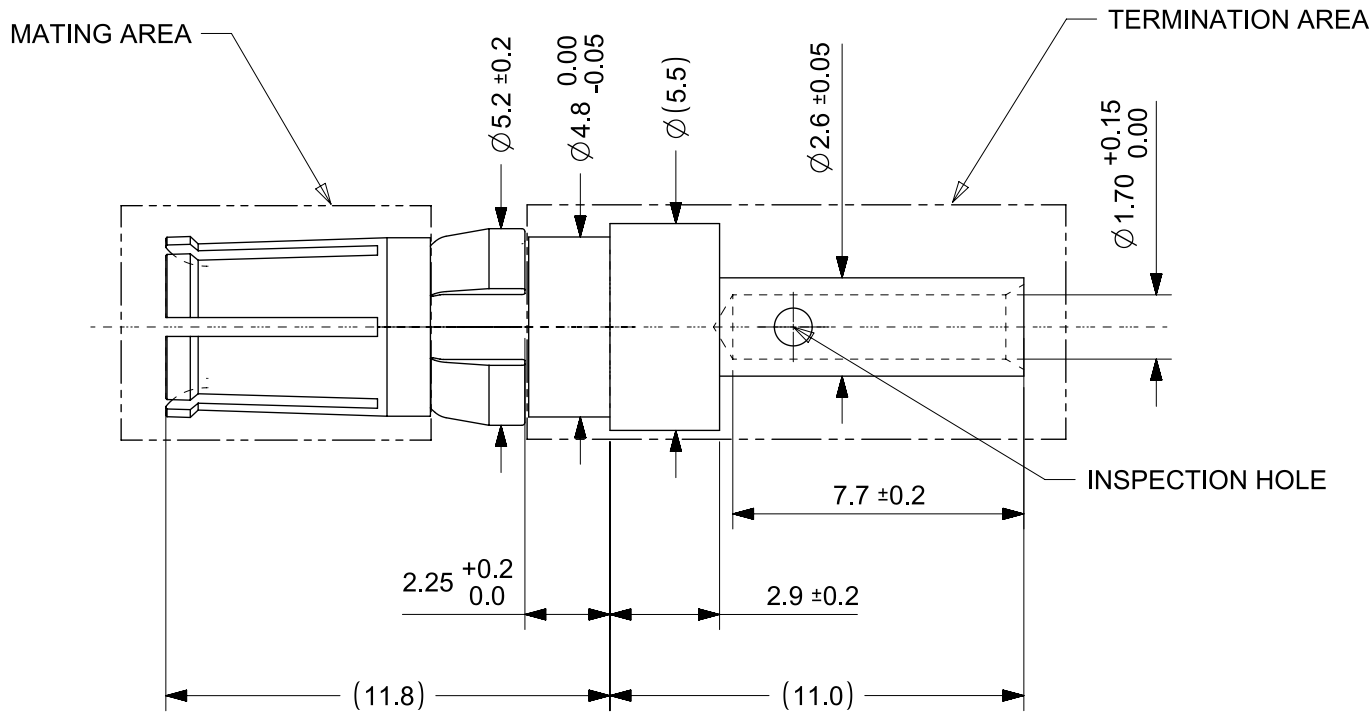
## Contact us

Tel: +86-755-8981 8866 Fax: +86-755-8427 6832

Email & Skype: [info@chipsmall.com](mailto:info@chipsmall.com) Web: [www.chipsmall.com](http://www.chipsmall.com)

Address: A1208, Overseas Decoration Building, #122 Zhenhua RD., Futian, Shenzhen, China





- NOTES:
- 1.MATERIAL: COPPER ALLOY
  - 2.PLATING-  
MATING AREA: 0.1µm MIN. Au over 2µm MIN. NiP  
TERMINATION AREA: 0.2µm MIN. Au over 2µm MIN. Ni
  - 3.PRODUCT SPECIFICATION:  
CIRCULAR CONNECTOR: 2009140003 PS  
INLINE CONNECTOR: 2018400030 PS
  - 4.APPLICATION SPECIFICATION: 2009140003-AS (CIRCULAR CONNECTOR)
  - 5.PACKAGING SPECIFICATION: 2018460001 PDD PK
  - 6.MATES WITH THE TERMINAL SERIES 201845
  - 7.USED WITH HOUSING SERIES 200915/ 201841
  - 8.A)MAXIMUM ALLOWED OVERALL WIRE DIAMETER IS 6.50MM FOR SERIES 201841  
B)MAXIMUM ALLOWED OVERALL WIRE DIAMETER IS 5.50MM FOR SERIES 200915
  - 9.DIMENSIONS IN BRACKETS ARE REFERENCE ONLY
  - 10.CRIMPING TOOL DETAILS

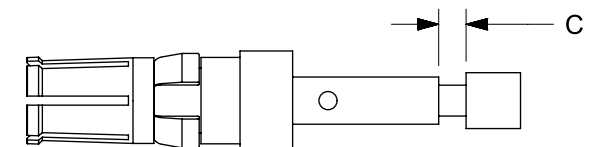
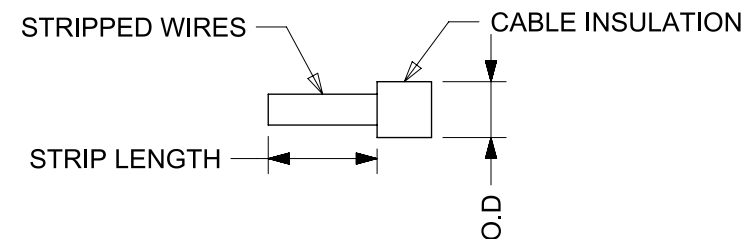
#### FCT TOOLS




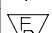


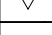




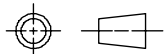
HAND TOOL: M309  
PNEUMATIC CRIMP TOOL: WA27-309  
DIE: SP994  
SELECTOR NUMBER:  
AWG 16/ SEL. 3  
AWG 18/ SEL. 2

RoHS compliant by exemption 6(c)

## CRIMP DETAILS

- FOR STRIP LENGTH CONSIDER ESTABLISHED TECHNICAL CRIMP SPECIFICATION, FOR EXAMPLE IPC/WHMA-A-620.
- IN ADDITION KEEP CLEARANCE 'C' BETWEEN INSULATION AND CONTACT BARREL LESS THAN 50% OF OVERALL WIRE O.D., WITH A RECOMMENDATION OF MAX. 1MM CLEARANCE C.
- PUSH STRIPPED WIRES INTO TERMINAL UP TO STOP.
- AFTER CRIMPING CHECK IF STRIPPED WIRES ARE VISIBLE IN INSPECTION HOLE.



QUALITY SYMBOLS		THIS DRAWING CONTAINS INFORMATION THAT IS PROPRIETARY TO MOLEX ELECTRONIC TECHNOLOGIES, LLC AND SHOULD NOT BE USED WITHOUT WRITTEN PERMISSION													
 = 0	DRAWING UPDATE	EC NO: 111695 DRWN: MRAMAKRISHNA CHK'D: ISHWARG APPR: ISHWARG	2016/12/19	2016/12/20	GENERAL TOLERANCES (UNLESS SPECIFIED)	DIMENSION UNITS	SCALE								
 = 0						MM	5:1								
 = 0						ANGULAR TOL ± °	DRWN BY		DATE		MULTICAT FEMALE CRP CONTACT 10A 16-18AWG				
 = 0						4 PLACES ±	MRAMAKRISHNA		2016/04/01						
 = 0						3 PLACES ±	CHK'D BY		DATE						
 = 0						2 PLACES ± 0.13	MRAMAKRISHNA		2016/04/25						
 = 0						1 PLACE ± 0.25	APPR BY		DATE		PRODUCT CUSTOMER DRAWING				
 = 0						0 PLACES ±	ISHWARG		2016/12/13						
 = 0						DRAFT WHERE APPLICABLE MUST REMAIN WITHIN DIMENSIONS	DRAWING SIZE	THIRD ANGLE PROJECTION			SERIES	MATERIAL NUMBER		CUSTOMER	
 = 0							A3				201846	2018460010		GENERAL MARKET	
= 0	A1	REV				DOCUMENT NUMBER		DOC TYPE	DOC PART	SHEET NUMBER					
= 0						2018460010		PSD	000	1 OF 1					