



Chipsmall Limited consists of a professional team with an average of over 10 year of expertise in the distribution of electronic components. Based in Hongkong, we have already established firm and mutual-benefit business relationships with customers from,Europe,America and south Asia,supplying obsolete and hard-to-find components to meet their specific needs.

With the principle of “Quality Parts,Customers Priority,Honest Operation,and Considerate Service”,our business mainly focus on the distribution of electronic components. Line cards we deal with include Microchip,ALPS,ROHM,Xilinx,Pulse,ON,Everlight and Freescale. Main products comprise IC,Modules,Potentiometer,IC Socket,Relay,Connector.Our parts cover such applications as commercial,industrial, and automotives areas.

We are looking forward to setting up business relationship with you and hope to provide you with the best service and solution. Let us make a better world for our industry!



Contact us

Tel: +86-755-8981 8866 Fax: +86-755-8427 6832

Email & Skype: info@chipsmall.com Web: www.chipsmall.com

Address: A1208, Overseas Decoration Building, #122 Zhenhua RD., Futian, Shenzhen, China




4

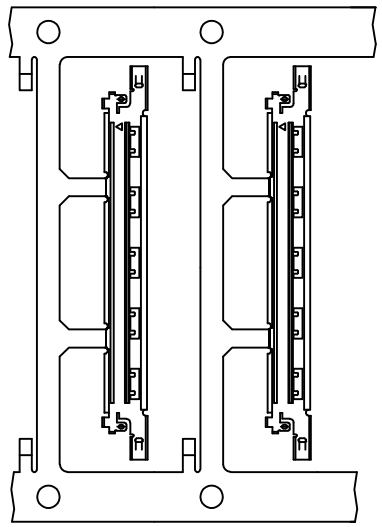
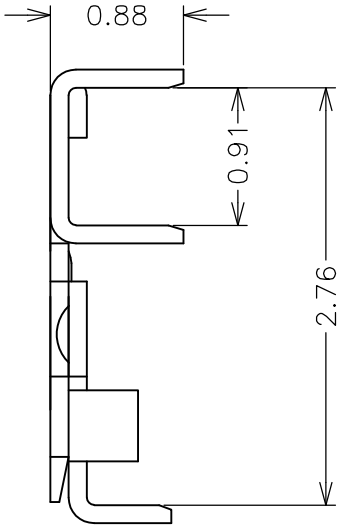
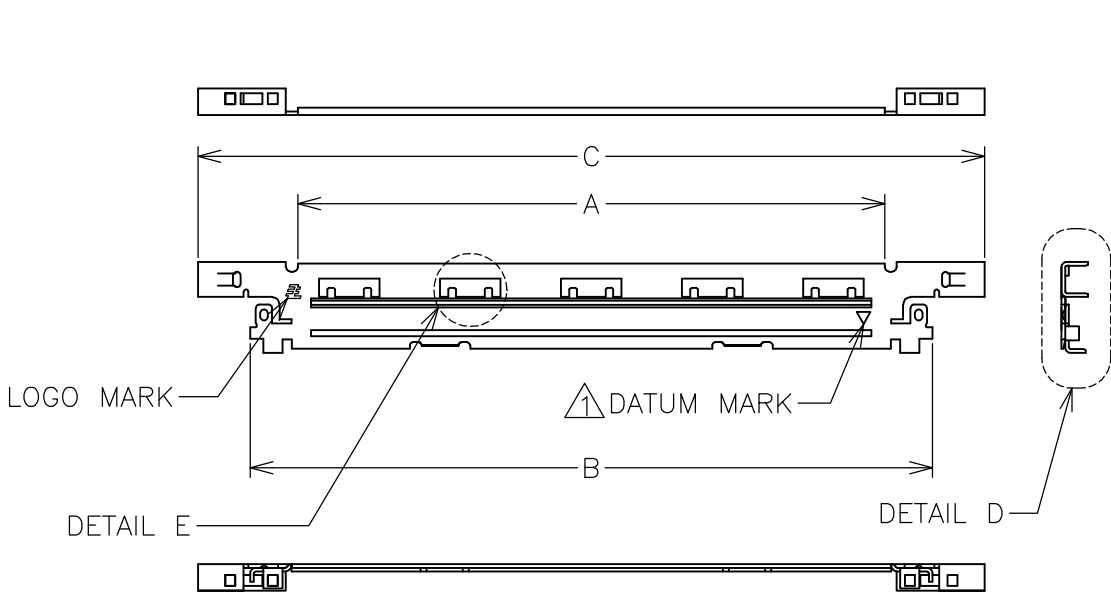
3

2

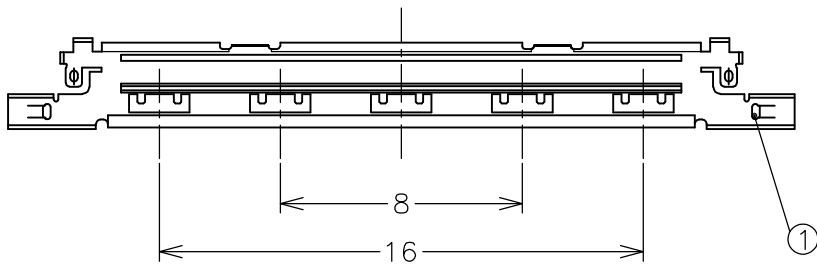
1

THIS DRAWING IS UNPUBLISHED.			RELEASED FOR PUBLICATION		
© COPYRIGHT - BY TYCO ELECTRONICS CORPORATION.			ALL RIGHTS RESERVED.		
PART NO.	POS NO.	A	B	C	DATUM MARK 
2023347-3	40	19.4	22.56	26	WITHOUT DATUM MARK
2023347-2	30	14.4	17.56	21	
2023347-1	20	9.4	12.56	16	
5-2023347-3	40	19.4	22.56	26	WITH DATUM MARK
5-2023347-2	30	14.4	17.56	21	
5-2023347-1	20	9.4	12.56	16	
					TOOLING STATUS
					AVAILABLE
					NOT AVAILABLE
					NOT AVAILABLE
					AVAILABLE
					NOT AVAILABLE
					NOT AVAILABLE

LOC J	DIST 	REVISIONS 変更			DATE	DWN	APVD
		P	LTR	DESCRIPTION			
			A	RELEASED	18SEP2009	Y.S	S.K



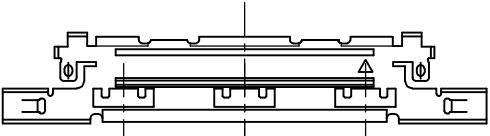
VIEW P
(SCALE 2:1)



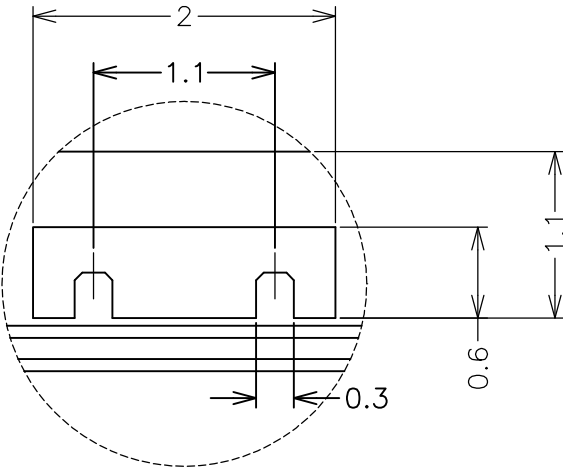
AS SHOWN : 5-2023347-3(40P)



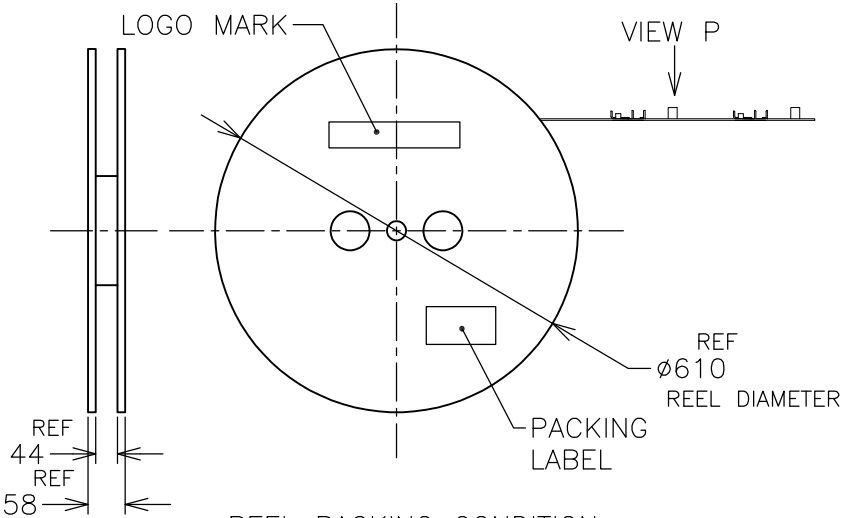
AS SHOWN : -2(30P)



AS SHOWN : -1(20P)




DETAIL E
(SCALE 20:1)



REEL PACKING CONDITION
(SCALE REF.)

GENERAL TOLERANCE	
6 MAX.	±0.2
6 OVER MAX. 30	±0.3
30 OVER MAX. 120	±0.5
ANGLE	±2°

THIS DRAWING IS A CONTROLLED DOCUMENT.		DWN Y.SHINO 18SEP2009	 Tyco Electronics Corporation Kawasaki, Japan			
DIMENSIONS: 単位: 耗 mm		CHK S.KAJINUMA 18SEP2009				
TOLERANCES UNLESS OTHERWISE SPECIFIED: 一般公差		APVD S.KAJINUMA 18SEP2009	NAME 名称 LCD COAXIAL EMBEDDED DISPLAY INTERFACE (LCEDI) 0.5mm PITCH CONNECTOR PLUG UPPER SHELL			
MATERIAL 材料		PRODUCT SPEC 製品規格 108-78659	SIZE A3			
FINISH 仕上		APPLICATION SPEC 取付適用規格 114-5456	CAGE CODE 00779			
WEIGHT		CUSTOMER DRAWING	RESTRICTED TO 番号 C-2023347			
SCALE 尺度 4:1		SHEET 1 OF 1		REV A		