



Chipsmall Limited consists of a professional team with an average of over 10 year of expertise in the distribution of electronic components. Based in Hongkong, we have already established firm and mutual-benefit business relationships with customers from,Europe,America and south Asia,supplying obsolete and hard-to-find components to meet their specific needs.

With the principle of “Quality Parts,Customers Priority,Honest Operation,and Considerate Service”,our business mainly focus on the distribution of electronic components. Line cards we deal with include Microchip,ALPS,ROHM,Xilinx,Pulse,ON,Everlight and Freescale. Main products comprise IC,Modules,Potentiometer,IC Socket,Relay,Connector.Our parts cover such applications as commercial,industrial, and automotives areas.

We are looking forward to setting up business relationship with you and hope to provide you with the best service and solution. Let us make a better world for our industry!



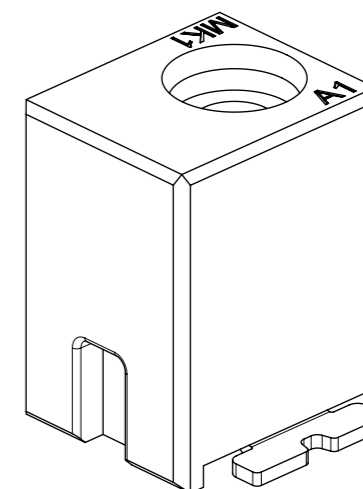
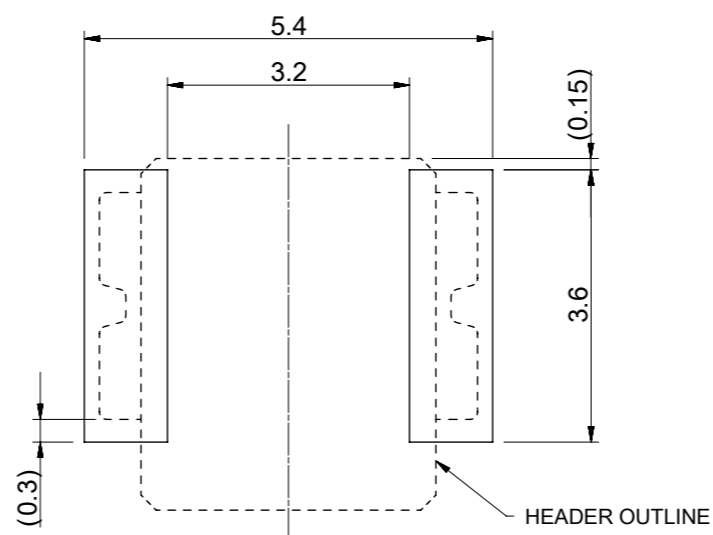
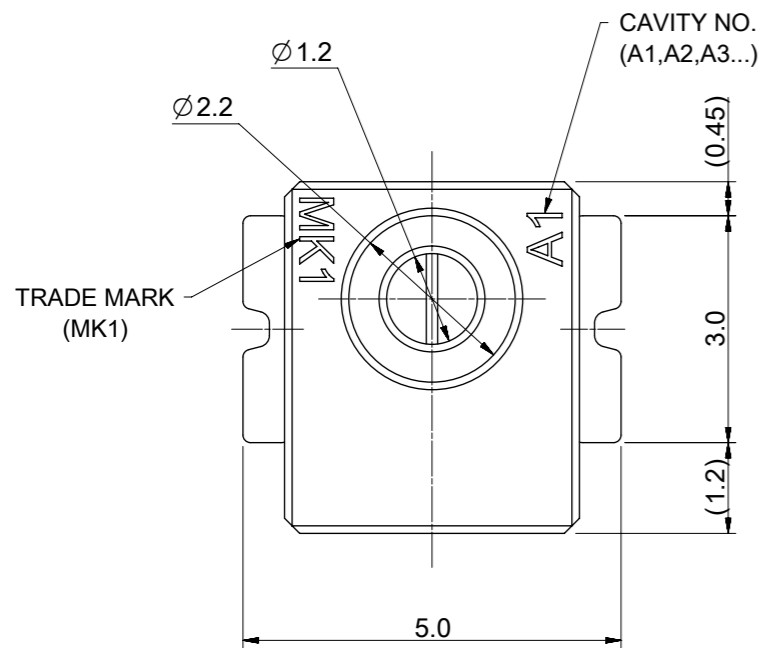
## Contact us

Tel: +86-755-8981 8866 Fax: +86-755-8427 6832

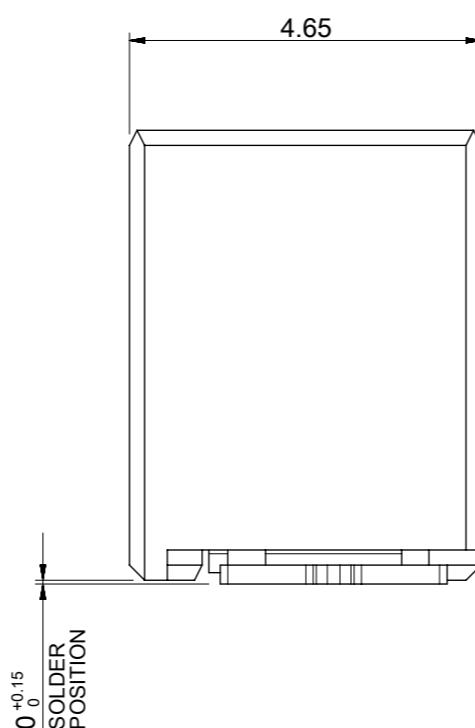
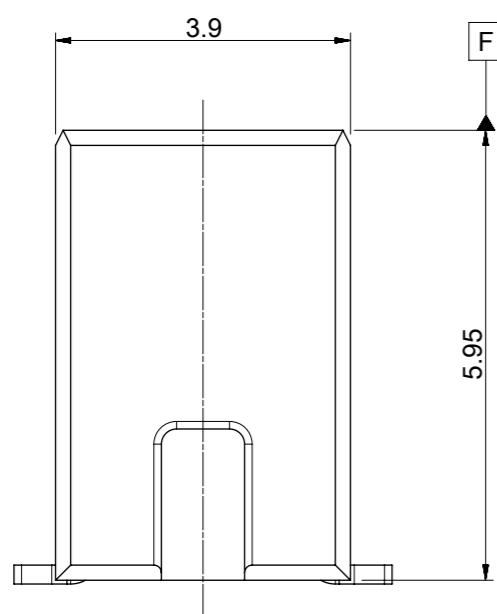
Email & Skype: info@chipsmall.com Web: www.chipsmall.com

Address: A1208, Overseas Decoration Building, #122 Zhenhua RD., Futian, Shenzhen, China



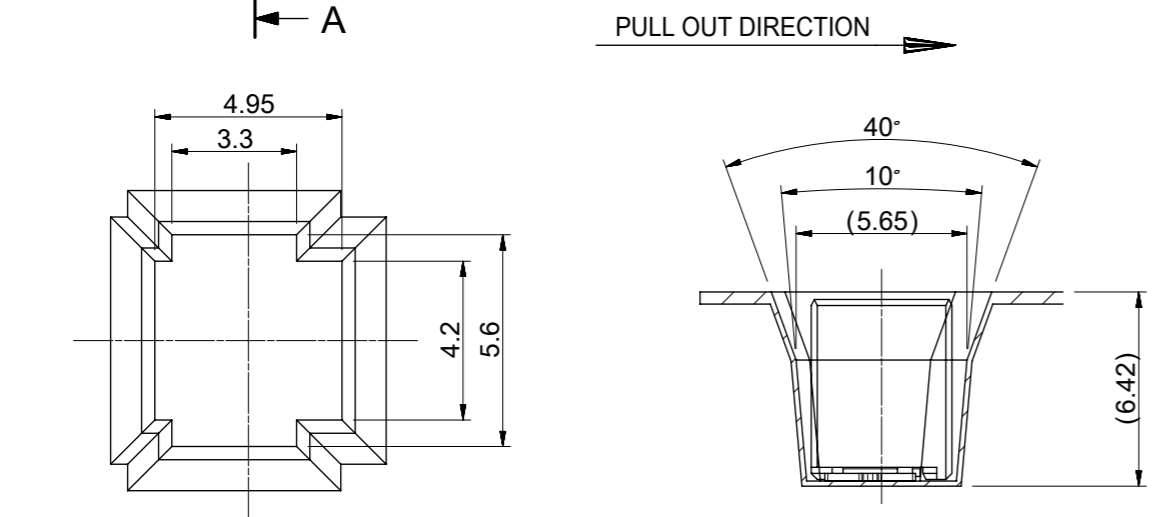
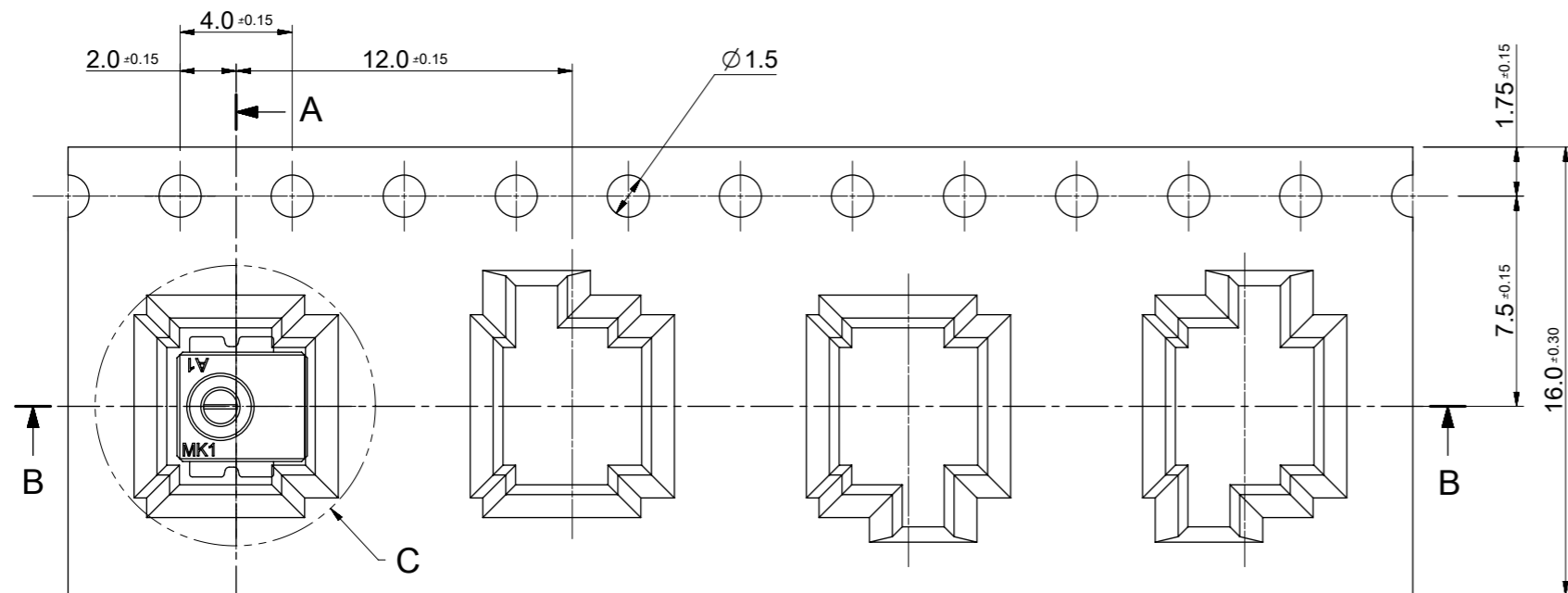


RECOMMENDED PCB LAYOUT  
[GENERAL TOLERANCE ±0.05]



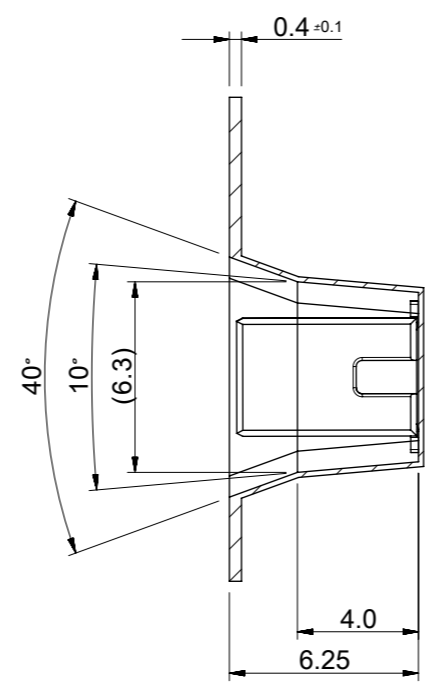
- NOTE
- MATERIAL
    - HEADER : LIQUID CRYSTAL POLYMER(LCP) UL94V-0, HALOGEN FREE, COLOR OF NATURAL
    - CONTACT TERMINAL : PHOSPHOR-BRONZE, 0.25mm THICKNESS
  - PLATING
    - CONTACT TERMINAL : PRE-TIN PLATED 0.8µm MINIMUM TIN OVER
  - PRODUCT SPECIFICATION : 2023940110
  - COPLANALITY OF SOLDER TAILS (PEAK TEMP. : 260°C), BEFORE & AFTER REFLOW : 0.08 MAX.
  - APPLICABLE SOLID WIRE RANGE : (OUTSIDE WIRE INSULATION : 2.2mm DIAMETER MAX.)
    - SOLID WIRE : AWG #18

QUALITY SYMBOLS	THIS DRAWING CONTAINS INFORMATION THAT IS PROPRIETARY TO MOLEX ELECTRONIC TECHNOLOGIES, LLC AND SHOULD NOT BE USED WITHOUT WRITTEN PERMISSION									
	▽A = 0	2017/04/12	GENERAL TOLERANCES (UNLESS SPECIFIED)		DIMENSION UNITS	SCALE	<b>molex®</b>			
▽E = 0	2017/09/22	ANGULAR TOL ± 3.0 °		mm	10:1					
▽F = 0	EC NO: 122327 DRWN: JSSHIN CHK'D: SHCHU APPR: YSKIM02	4 PLACES ±	DRWN BY		DATE		LITE-TRAP CONN. VERTICAL TYPE HEADER ASS'Y -1CKT			
▼ = 0		3 PLACES ±	JSSHIN	2017/04/12						
▽C = 0		2 PLACES ± 0.15	CHK'D BY		DATE		PRODUCT CUSTOMER DRAWING			
⊗ = 0		1 PLACE ± 0.2	SHCHU	2017/09/22						
■ = 0		0 PLACES ±	APPR BY		DATE		SERIES	MATERIAL NUMBER	CUSTOMER	
▽ = 0	A	DRAFT WHERE APPLICABLE MUST REMAIN WITHIN DIMENSIONS		DRAWING SIZE	THIRD ANGLE PROJECTION	202394	2023940110	GENERAL MARKET		
	REV			A3		DOCUMENT NUMBER		DOC TYPE	DOC PART	SHEET NUMBER
						2023940110		PSD	000	1 OF 2

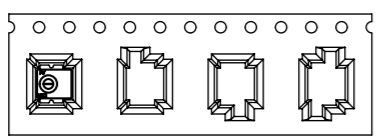


DETAIL C  
SCALE 5:1

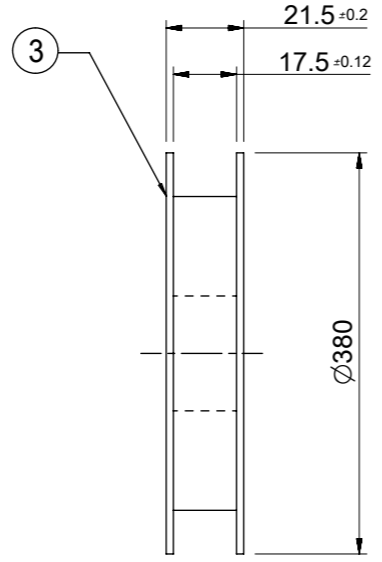
SECTION B-B



SECTION A-A



PULL OUT  
DIRECTION

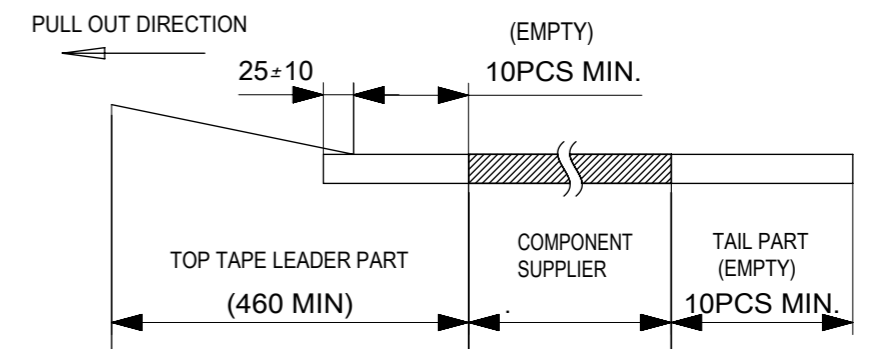


PLASTIC BOBBIN

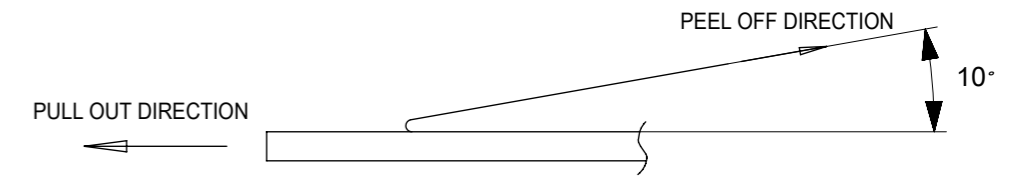
NOTES

1. NUMBER OF CONNECTORS : 1200 PCS/REEL.

2. LEAD TAPE LENGTH.



3. PEEL-OFF FORCE OF TOP TAPE : 0.1N~0.59N (10.2gf~60gf)  
(PEELING DIRECTION AS SHOWN IN FOLLOWING FIG.)  
<PEEL-OFF SPEED : 300mm/min (REF.)>



4. FLASH IN ANY PORTION SHOULD BE LESS THAN 0.20mm MAX.  
5. UNLESS OTHERWISE SPECIFIED INNER R0.2 MAX

<b>QUALITY SYMBOLS</b> ▽A = 0 ▽E = 0 ▽F = 0 ▼ = 0 ▽C = 0 ⊠ = 0 ■ = 0 ▽ = 0	THIS DRAWING CONTAINS INFORMATION THAT IS PROPRIETARY TO MOLEX ELECTRONIC TECHNOLOGIES, LLC AND SHOULD NOT BE USED WITHOUT WRITTEN PERMISSION									
	2017/04/12	GENERAL TOLERANCES (UNLESS SPECIFIED)		DIMENSION UNITS	SCALE					
	2017/09/22	ANGULAR TOL ± 3.0 °		mm	4:1					
	2017/09/25	4 PLACES	±	DRWN BY	DATE	LITE-TRAP CONN. VERTICAL TYPE HEADER ASS'Y -1CKT				
		3 PLACES	±	JSSHIN	2017/04/12					
		2 PLACES	± 0.2	CHK'D BY	DATE	PRODUCT CUSTOMER DRAWING				
		1 PLACE	± 0.2	SHCHU	2017/09/22					
		0 PLACES	±	APPR BY	DATE	SERIES	MATERIAL NUMBER	CUSTOMER		
		DRAFT WHERE APPLICABLE MUST REMAIN WITHIN DIMENSIONS		YSKIM02	2017/09/25	202394	2023940110	GENERAL MARKET		
				DRAWING SIZE	THIRD ANGLE PROJECTION	DOCUMENT NUMBER		DOC TYPE	DOC PART	SHEET NUMBER
			A3		2023940110		PSD	000	2 OF 2	