



Chipsmall Limited consists of a professional team with an average of over 10 year of expertise in the distribution of electronic components. Based in Hongkong, we have already established firm and mutual-benefit business relationships with customers from,Europe,America and south Asia,supplying obsolete and hard-to-find components to meet their specific needs.

With the principle of “Quality Parts,Customers Priority,Honest Operation,and Considerate Service”,our business mainly focus on the distribution of electronic components. Line cards we deal with include Microchip,ALPS,ROHM,Xilinx,Pulse,ON,Everlight and Freescale. Main products comprise IC,Modules,Potentiometer,IC Socket,Relay,Connector.Our parts cover such applications as commercial,industrial, and automotives areas.

We are looking forward to setting up business relationship with you and hope to provide you with the best service and solution. Let us make a better world for our industry!



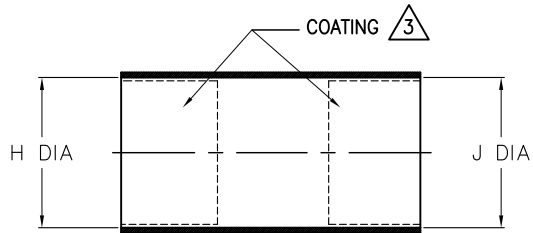
Contact us

Tel: +86-755-8981 8866 Fax: +86-755-8427 6832

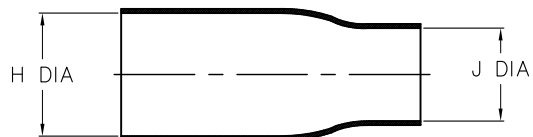
Email & Skype: info@chipsmall.com Web: www.chipsmall.com

Address: A1208, Overseas Decoration Building, #122 Zhenhua RD., Futian, Shenzhen, China



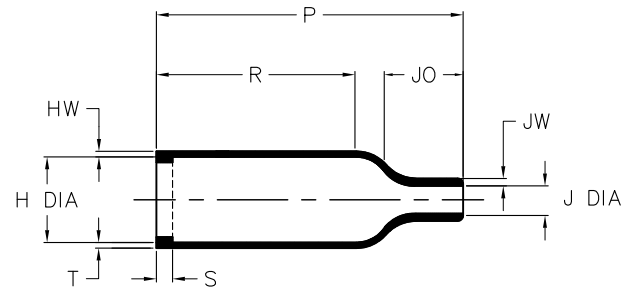


AS SUPPLIED (MATERIAL -3, -4, OR -25)



AS SUPPLIED (MATERIAL -12)

REVISIONS		
LTR	DESCRIPTION	DATE
B	REVISED PER ECO-10-020693	10/12/2010



AFTER UNRESTRICTED RECOVERY

NOTES

1. ALL DIMENSIONS ARE IN $\frac{\text{INCHES}}{[\text{MILLIMETERS}]}$
2. DIMENSIONS APPEARING IN TABLE ARE AS FOLLOWS:
 a - AS SUPPLIED
 b - AFTER UNRESTRICTED RECOVERY

3 COATING (ADHESIVE): IS OPTIONAL AS SUPPLIED DIMENSIONS APPEARING IN TABLE ARE FOR UNCOATED PARTS. WHEN COATING IS ADDED, ENTRY DIAMETER WILL BE REDUCED BY .06 [1.5] MAX.

4. ORDERING INFORMATION

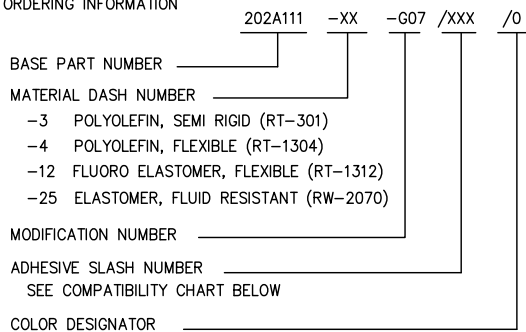


TABLE OF DIMENSIONS

PART DESCRIPTION	H		J		P ±10%	R ±10%	S ±10%	T ±10%	JO ±10%	JW ±20%	HW ±20%
	MIN	MAX	MIN	MAX							
	a	b	a	b							
202A111-X-G07 (X: -3,-4 OR -25)	.67 [17]	.31 [7.9]	.67 [17]	.09 [2,2]	.98 [25]	.55 [14]	.12 [3,0]	.04 [1,0]	.24 [6,0]	.07 [1,7]	.05 [1,3]
202A111-12-G07	.63 [16]	.31 [8]	.43 [11]	.09 [2,2]	.98 [25]	.55 [14]	.12 [3,0]	.04 [1,0]	.24 [6,0]	.07 [1,7]	.05 [1,3]

If this document is printed it becomes uncontrolled. Check for the latest revision

CUSTOMER DRAWING

COMPATIBILITY CHART

MATERIAL DASH NO.	ADHESIVE (COATING) SLASH NUMBER	ADHESIVE (COATING) S NUMBER
-3	/42; /86; /180	S-1017; S-1048; S1030
-4	/42; /86; /180	S-1017; S-1048; S1030
-12	N/A	N/A
-25	/42; /86; /225	S-1017; S-1048; S-1206

UNLESS OTHERWISE SPECIFIED DIMENSIONS ARE INCHES. METRIC DIMENSIONS ARE IN BRACKETS.
 DECIMAL TOLERANCES
 .XXX ± 0.005 [0.13 mm]
 .XX ± 0.01 [0.25 mm]
 .X ± 0.1 [0.50 mm]
 ANGLE TOLERANCE
 .X ± 1 DEG.

REVISED
 UNGUYEN
 APPROVED
 DHURRELL

Tyco Electronics Raychem Molded Parts
 305 Constitution Dr
 Menlo Park, CA 94025

TITLE
BOOT, STRAIGHT



SIZE B CODE IDENT. NO. 06090 DWG. NO. 202A111-X-G07