



Chipsmall Limited consists of a professional team with an average of over 10 year of expertise in the distribution of electronic components. Based in Hongkong, we have already established firm and mutual-benefit business relationships with customers from,Europe,America and south Asia,supplying obsolete and hard-to-find components to meet their specific needs.

With the principle of "Quality Parts,Customers Priority,Honest Operation,and Considerate Service",our business mainly focus on the distribution of electronic components. Line cards we deal with include Microchip,ALPS,ROHM,Xilinx,Pulse,ON,Everlight and Freescale. Main products comprise IC,Modules,Potentiometer,IC Socket,Relay,Connector.Our parts cover such applications as commercial,industrial, and automotives areas.

We are looking forward to setting up business relationship with you and hope to provide you with the best service and solution. Let us make a better world for our industry!



Contact us

Tel: +86-755-8981 8866 Fax: +86-755-8427 6832

Email & Skype: info@chipsmall.com Web: www.chipsmall.com

Address: A1208, Overseas Decoration Building, #122 Zhenhua RD., Futian, Shenzhen, China



NOTES

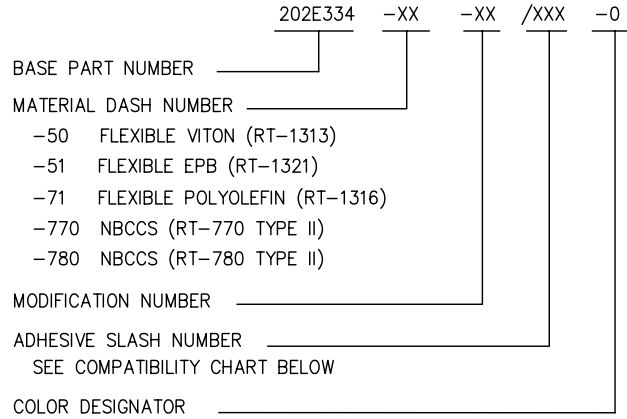
1. ALL DIMENSIONS ARE IN $\frac{\text{INCHES}}{[\text{MILLIMETERS}]}$

2. DIMENSIONS APPEARING IN TABLE ARE AS FOLLOWS:

- a - AS SUPPLIED
- b - AFTER UNRESTRICTED RECOVERY

3 COATING (ADHESIVE): IS OPTIONAL AS SUPPLIED DIMENSIONS APPEARING IN TABLE ARE FOR UNCOATED PARTS. WHEN COATING IS ADDED, ENTRY DIAMETER WILL BE REDUCED BY .06 MAX.

4. ORDERING INFORMATION:

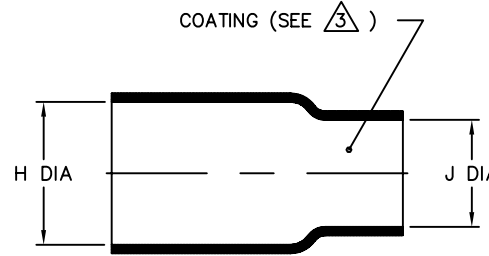


If this document is printed it becomes uncontrolled. Check for the latest revision

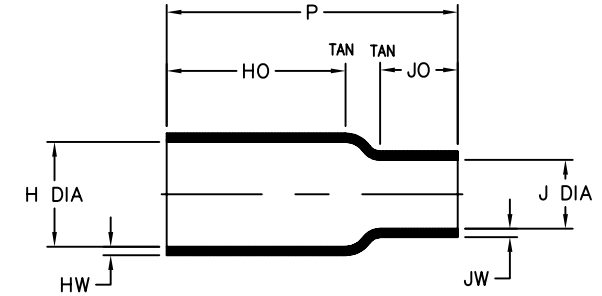
COMPATIBILITY CHART

MATERIAL DASH NO.	ADHESIVE (COATING) SLASH NO.	ADHESIVE (COATING) S NO.
-50	N/A	N/A
-51	/86; /164; /180	S-1048; S-1124; S-1030
-71	/42; /86; /180	S-1017; S-1048; S-1030
-770	N/A	N/A
-780	N/A	N/A

REVISIONS		
LTR	DESCRIPTION	DATE
T	ECO-09-016592	07/15/2009



AS SUPPLIED



AFTER UNRESTRICTED RECOVERY

TABLE OF DIMENSIONS

PART DESCRIPTION	H		J		P ±10% b	HO ±10% b	JO ±10% b	HW ±25% b	JW ±25% b
	MIN	MAX	MIN	MAX					
	a	b	a	b					
202E334	.50 [12,7]	.42 [10,7]	.44 [11,2]	.11 [2,8]	2.50 [63,5]	1.62 [41,1]	.62 [15,7]	.06 [1,52]	.06 [1,52]
202E336	.82 [20,8]	.42 [10,7]	.81 [20,6]	.21 [5,3]	2.50 [63,5]	1.62 [41,1]	.65 [16,5]	.06 [1,52]	.06 [1,52]
202E344	.87 [22,1]	.74 [18,8]	.44 [11,2]	.10 [2,5]	2.10 [53,3]	1.10 [27,9]	.62 [15,7]	.09 [2,29]	.06 [1,52]
202E346	.87 [22,1]	.74 [18,8]	.81 [20,6]	.31 [7,9]	2.10 [53,3]	1.10 [27,9]	.55 [14,0]	.09 [2,29]	.06 [1,52]

CUSTOMER DRAWING

UNLESS OTHERWISE SPECIFIED DIMENSIONS ARE INCHES. METRIC DIMENSIONS ARE IN BRACKETS.

DECIMAL TOLERANCES
 .XXX ± 0.005 [0.13 mm]
 .XX ± 0.01 [0.25 mm]
 .X ± 0.1 [0.50 mm]

ANGLE TOLERANCE
 .X ± 1 DEG.

TYCO ELECTRONICS RESERVES THE RIGHT TO AMEND THIS DRAWING AT ANY TIME. USERS SHOULD EVALUATE THE SUITABILITY OF THE PRODUCT FOR THEIR APPLICATION.

© 2008-2009 Tyco Electronics Corporation. All rights reserved.

DRAWN
YUNGUYEN

APPROVED
STRAN

THIRD ANGLE PROJECTION

Tyco Electronics

Raychem Molded Parts
305 Constitution Dr
Menlo Park, CA 94025

TITLE
BOOT, STRAIGHT

SIZE B CODE IDENT. NO. 06090 DWG. NO. 202E334thru346

DO NOT SCALE THIS DRAWING

SHEET 1 OF 1