



Chipsmall Limited consists of a professional team with an average of over 10 year of expertise in the distribution of electronic components. Based in Hongkong, we have already established firm and mutual-benefit business relationships with customers from,Europe,America and south Asia,supplying obsolete and hard-to-find components to meet their specific needs.

With the principle of "Quality Parts,Customers Priority,Honest Operation,and Considerate Service",our business mainly focus on the distribution of electronic components. Line cards we deal with include Microchip,ALPS,ROHM,Xilinx,Pulse,ON,Everlight and Freescale. Main products comprise IC,Modules,Potentiometer,IC Socket,Relay,Connector.Our parts cover such applications as commercial,industrial, and automotives areas.

We are looking forward to setting up business relationship with you and hope to provide you with the best service and solution. Let us make a better world for our industry!



Contact us

Tel: +86-755-8981 8866 Fax: +86-755-8427 6832

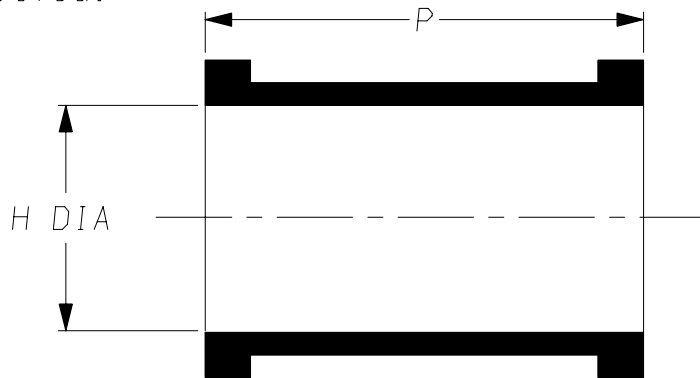
Email & Skype: info@chipsmall.com Web: www.chipsmall.com

Address: A1208, Overseas Decoration Building, #122 Zhenhua RD., Futian, Shenzhen, China

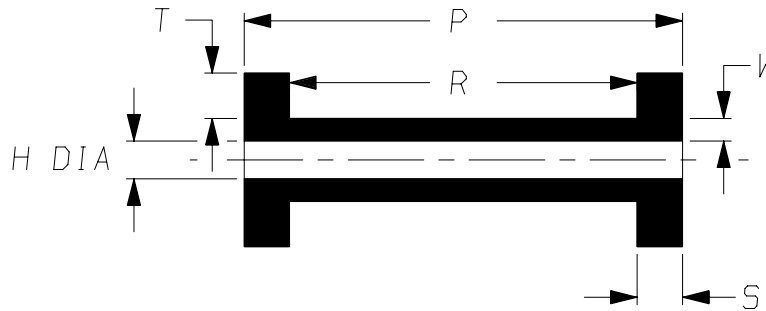


a) Part as supplied.

202W3** -12



b) Part after unrestricted recovery.



DIMENSIONS in millimetres
(in inches, for reference)

Part No.	H		P	P	R	S	T	W
	MIN	MAX	±2	±10%	±10%	±10%	±10%	±20%
	a	b	a	b	b	b	b	b
202W302	20 (0.79)	9.5 (0.37)	23 (0.91)	35 (1.38)	25 (0.98)	5.0 (0.20)	3.0 (0.12)	1.5 (0.06)
202W312	26 (1.02)	12.7 (0.50)	24 (0.94)	35 (1.38)	25 (0.98)	5.0 (0.20)	3.0 (0.12)	2.0 (0.08)
202W321	6 (0.24)	3.0 (0.12)	25 (0.98)	29 (1.14)	23 (0.91)	3.0 (0.12)	3.0 (0.12)	1.5 (0.06)
202W331	15 (0.59)	6.4 (0.25)	20 (0.79)	29 (1.14)	24 (0.94)	2.5 (0.10)	2.0 (0.08)	1.5 (0.06)
202W342	30 (1.18)	18.0 (0.71)	27 (1.06)	35 (1.38)	25 (0.98)	5.0 (0.20)	3.0 (0.12)	2.0 (0.08)

Copyright (!)

The copyright in this drawing is the property of Tyco Electronics UK Ltd. The drawing is issued on the condition that it is not copied, reproduced or disclosed to a third party, either in whole or in part without the prior written consent of Tyco Electronics UK Ltd.

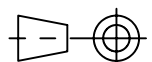
Drawn A.LILLEY. Checked Issue 4 Date February 2007 Conforms to ISO Recommendations

Approval
Design

MKTG.

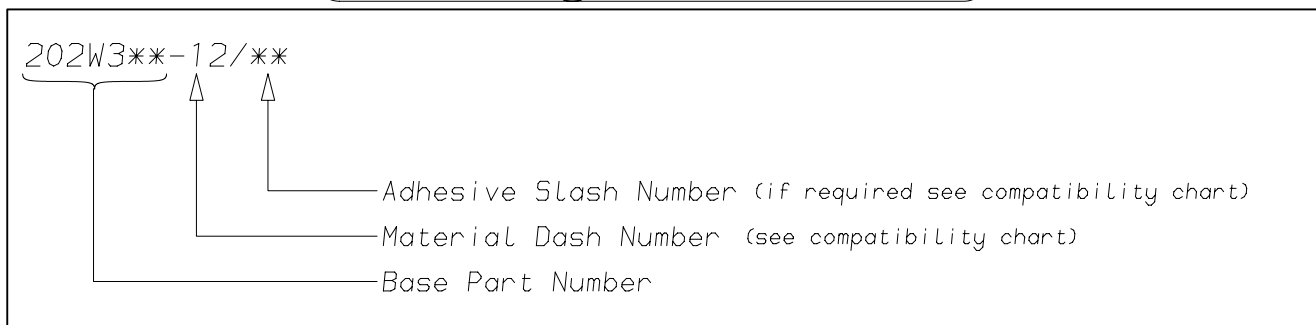
Q.A.

3rd Angle Projection
Not to Scale



Raychem		Specification Control Drawing	Part Number 202W3**-12 Issue 4
Iss.	Date	E.C.R. No.	Details of Change
2	May 1994	H0209	202W342 added & P dim
3	December 2006	CR06-DM-104	Material description name changed
3	December 2006	CR06-HM-012	Imperial dimensions added
4	February 2007	CR07-HM-001	Size 202W321 added

(Ordering Information)



(COMPATIBILITY CHART)

Material Dash Number	Material Description	SPEC Number	Coating Slash Number
-12	FLUOROELASTOMER, FLEXIBLE	RT-1312, RW-2071	/225

NOTES

- ① As supplied dimensions are for uncoated parts, when coating is added entry diameters will reduce by 1.5mm Max.

Tyco Electronics UK Ltd. Faraday Road, Swindon, Wiltshire, SN3 5HH England Telephone: (01793) 528171 Fax: 572516	Tyco Electronics Corporation 300, Constitution Drive, Menlo Park, CA 94025 USA Telephone (650) 361-3860 Fax: (650) 361-5579
Cage Code K1010	Cage Code 06090