



Chipsmall Limited consists of a professional team with an average of over 10 year of expertise in the distribution of electronic components. Based in Hongkong, we have already established firm and mutual-benefit business relationships with customers from,Europe,America and south Asia,supplying obsolete and hard-to-find components to meet their specific needs.

With the principle of "Quality Parts,Customers Priority,Honest Operation,and Considerate Service",our business mainly focus on the distribution of electronic components. Line cards we deal with include Microchip,ALPS,ROHM,Xilinx,Pulse,ON,Everlight and Freescale. Main products comprise IC,Modules,Potentiometer,IC Socket,Relay,Connector.Our parts cover such applications as commercial,industrial, and automotives areas.

We are looking forward to setting up business relationship with you and hope to provide you with the best service and solution. Let us make a better world for our industry!



## Contact us

Tel: +86-755-8981 8866 Fax: +86-755-8427 6832

Email & Skype: info@chipsmall.com Web: www.chipsmall.com

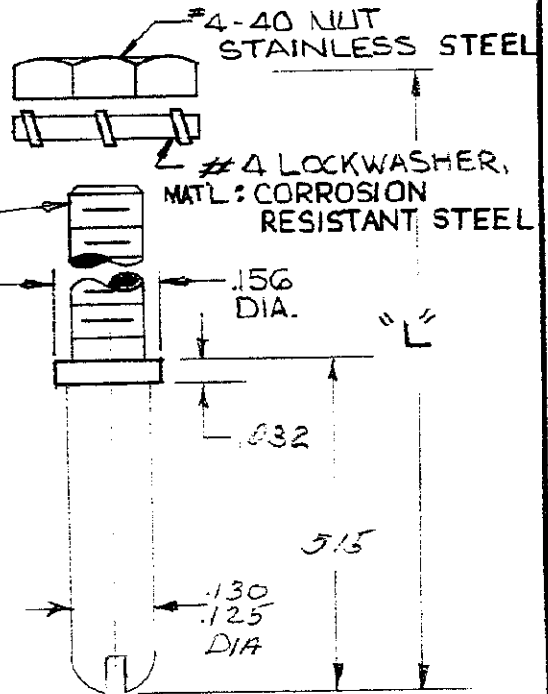
Address: A1208, Overseas Decoration Building, #122 Zhenhua RD., Futian, Shenzhen, China



© 1967 BY AMP INCORPORATED. ALL RIGHTS RESERVED. AMP PRODUCTS COVERED BY PATENTS AND/OR PATENTS PENDING.

REVISIONS			
SYM	DESCRIPTION	DATE	APPD
F	REV PER ECN H-017	5-27-80	ELF JRE
G	ADDED -4 PER ECN J-128	3/15/82	TKH JRE
H	OBSOLETE -3 PER ECN DF-0364	11/5/10/10/00	JRM

- 203881-1 1. AS SHOWN, "L" = 1.110/1.095,  
2. KEYING PIN - BRASS, ZINC PL.
- 203881-2 1. SAME AS -1 EXCEPT  
2. KEYING PIN - SST  
"L" = 1.110/1.095.
- OBSOLETE** 1. SAME AS -1 EXCEPT:  
2. "L" = 1.110/1.095.
- 203881-4 1. SAME AS -2 EXCEPT:  
2. CUSTOMER PART NO. TO BE MARKED ON INNERMOST PACKAGE.  
4-40 UNC-2A  
MAT'L - SEE DASH NO



COMPONENTS ARE PACKAGED UNASSEMBLED

AMP INFO

LOC PRINT

DFH CO

UNLESS OTHERWISE SPECIFIED  
DIMENSIONS ARE IN INCHES

TOLERANCES ON  
FRACTIONS =  $\pm .005$  DECIMALS =  $\pm .005$  ANGLES =  $\pm .005$

MATERIAL  
SEE CALL OUT

HEAT TREAT  
N

FINISH  
N

SIGNATURE	DATE
DR <i>C. Hoover</i>	8-24-67
CHK <i>R. Mills</i>	2-9-68
DSGN ENGR	
APPD <i>M. Hoag</i>	2/9/68
DSGN APPD	
OTHER APPD <i>R. Holliday</i>	2/9/68

**AMP**

AMP INCORPORATED  
HARRISBURG, PENNSYLVANIA

PIN-KEYING ASS'Y.  
HDR SERIES

CODE IDENT NO	SIZE	NUMBER
00779	A	203881
SCALE 4:1	WT	CALC ACTUAL
		SHEET 1 OF 1