



Chipsmall Limited consists of a professional team with an average of over 10 year of expertise in the distribution of electronic components. Based in Hongkong, we have already established firm and mutual-benefit business relationships with customers from,Europe,America and south Asia,supplying obsolete and hard-to-find components to meet their specific needs.

With the principle of “Quality Parts,Customers Priority,Honest Operation,and Considerate Service”,our business mainly focus on the distribution of electronic components. Line cards we deal with include Microchip,ALPS,ROHM,Xilinx,Pulse,ON,Everlight and Freescale. Main products comprise IC,Modules,Potentiometer,IC Socket,Relay,Connector.Our parts cover such applications as commercial,industrial, and automotives areas.

We are looking forward to setting up business relationship with you and hope to provide you with the best service and solution. Let us make a better world for our industry!



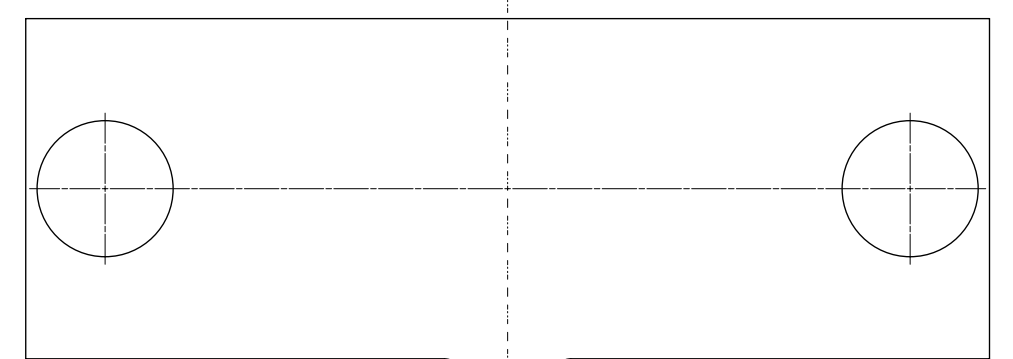
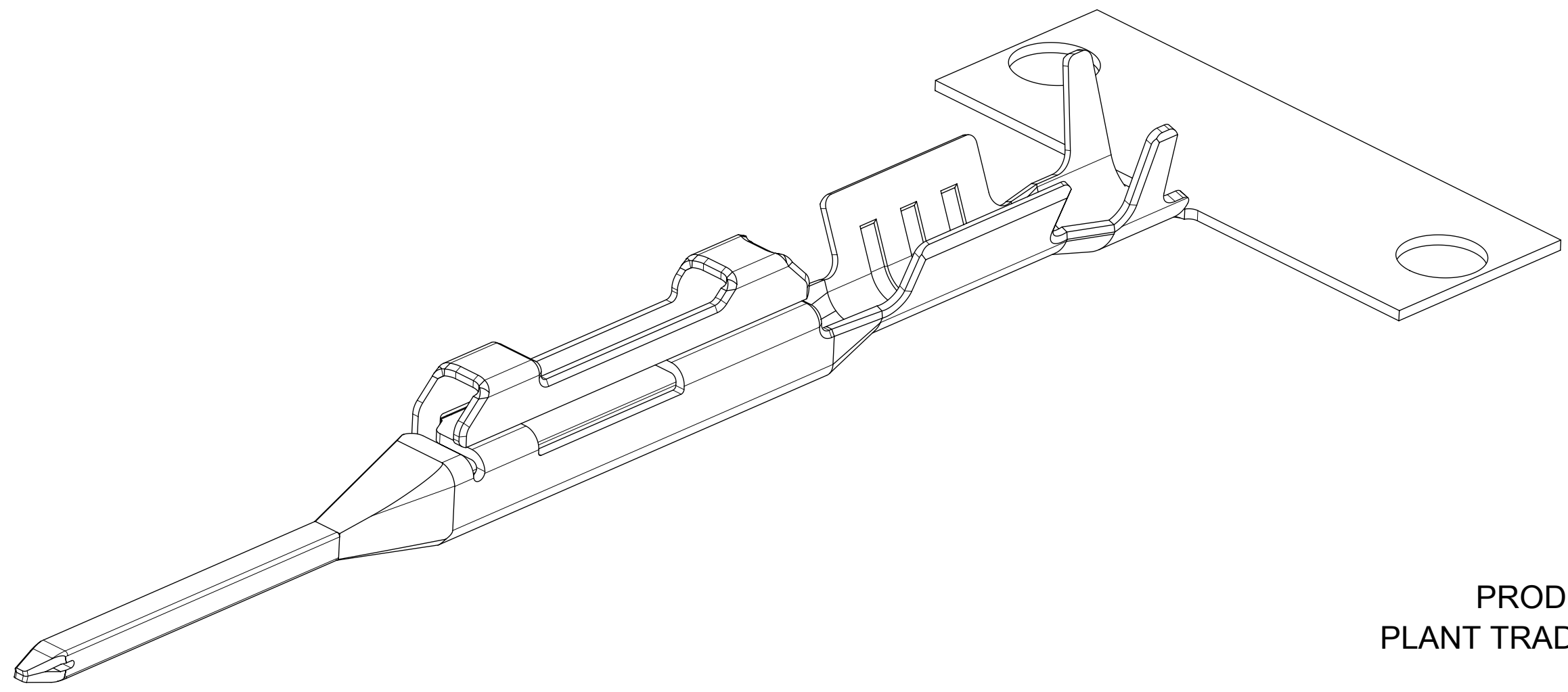
Contact us

Tel: +86-755-8981 8866 Fax: +86-755-8427 6832

Email & Skype: info@chipsmall.com Web: www.chipsmall.com

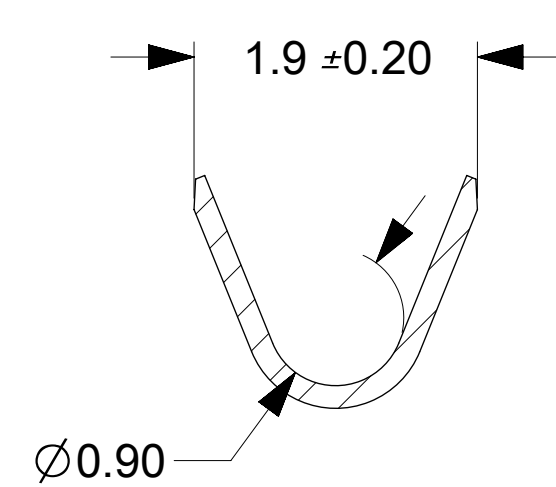
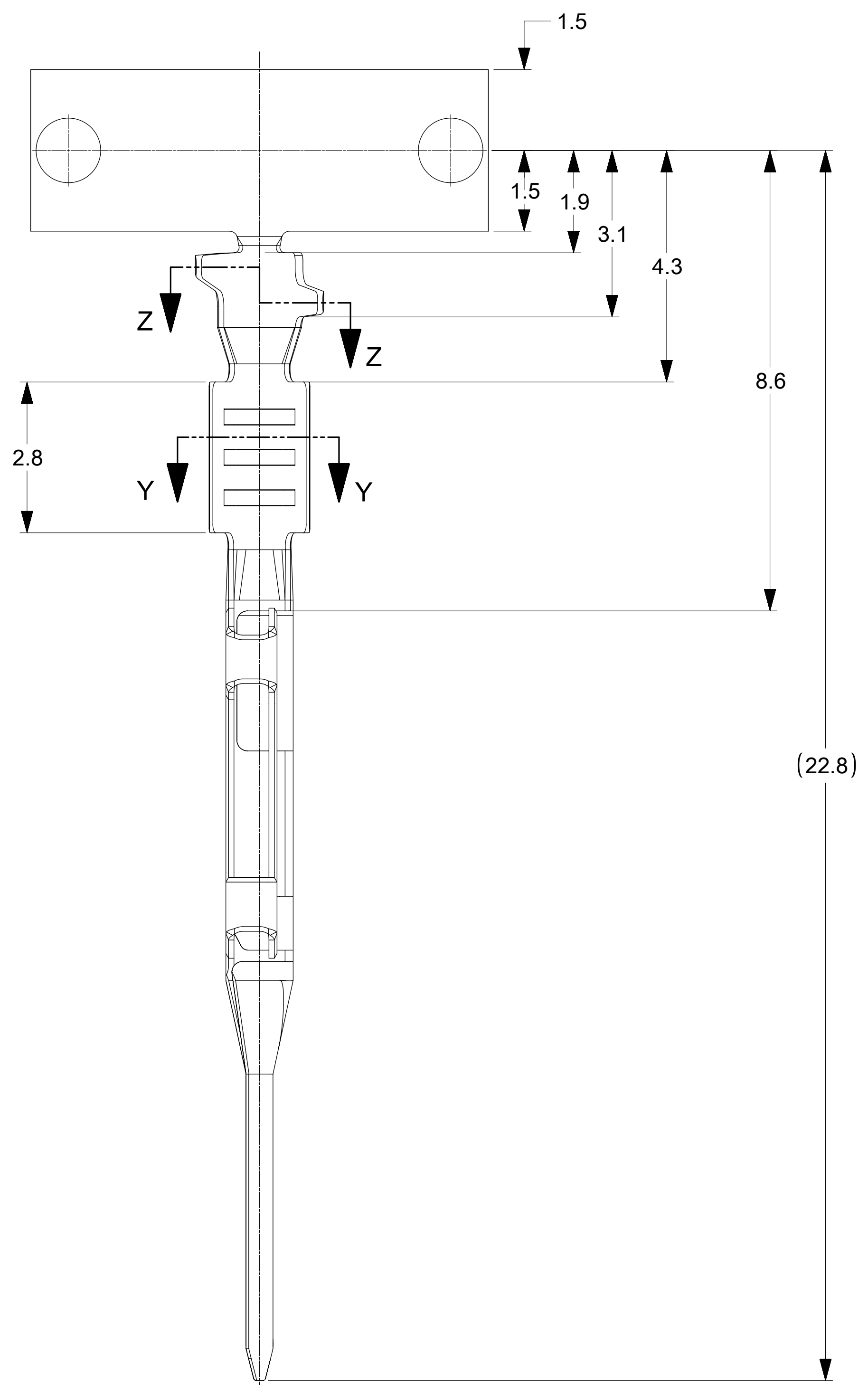
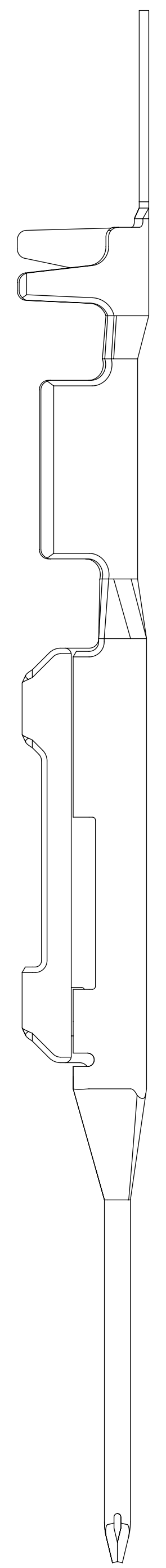
Address: A1208, Overseas Decoration Building, #122 Zhenhua RD., Futian, Shenzhen, China



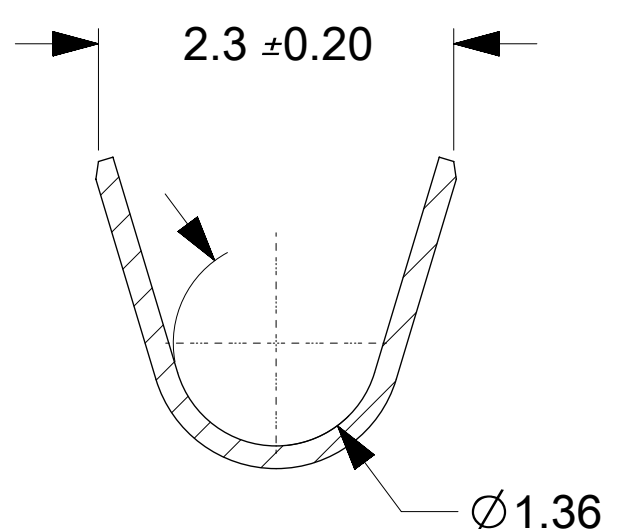


PRODUCTION
PLANT TRADEMARK

MXW



SECTION Y-Y
SCALE 20:1
ROTATED 180°



SECTION Z-Z
SCALE 20:1
ROTATED 180°

NOTES:

1. MATERIAL: COPPER ALLOY
2. FINISH:
2.5µm MIN OVERALL ELECTROPLATE MATTE TIN OVER
1.25µm MIN OVERALL ELECTROPLATED MATTE NICKEL
3. PRODUCT SPECIFICATION: 2042200000-PS
4. APPLICATION SPECIFICATION: 2042200000-AS
5. PACKAGING SPECIFICATION: 2042260000-PK
6. THIS CRIMP TERMINAL TO BE USED WITH ASSEMBLY SERIES 204223.
7. THIS CRIMP TERMINAL MATES WITH RECEPTACLE CRIMP TERMINAL SERIES 204301.
8. THIS PART CONFORMS TO CLASS 'B' REQUIREMENTS OF COSMETIC SPECIFICATION PS-45499-002.
9. WIRE SPECIFICATIONS:
AWG: 22 and 24 awg
INSULATION OD RANGE: 0.95mm - 1.4mm
10. CRIMP TOOLING:
APPLICATOR PART NUMBER: 638083700
HAND TOOL PART NUMBER: 2002180400

THIS DRAWING CONTAINS INFORMATION THAT IS PROPRIETARY TO MOLEX ELECTRONIC TECHNOLOGIES, LLC AND SHOULD NOT BE USED WITHOUT WRITTEN PERMISSION									
QUALITY SYMBOLS 	2018/02/08	GENERAL TOLERANCES (UNLESS SPECIFIED)		DIMENSION UNITS	SCALE				
	2018/02/08	ANGULAR TOL ± °		mm	15:1				
	EC NO: 172092 DRWN: TGGREGORI CHKD: RHODGE REV APPR: RHODGE	2018/02/08	4 PLACES ±	DRWN BY	DATE	PLUG CRIMP TERMINAL SQUBA 1.8			
		2018/02/08	3 PLACES ±	TGGREGORI	2017/10/10				
2 PLACES ±		CHKD BY	DATE	PRODUCT CUSTOMER DRAWING					
1 PLACE ± 0.2	CHGD BY	DATE							
0 PLACES ±	APPR BY	DATE	SERIES	MATERIAL NUMBER	CUSTOMER	DOCUMENT NUMBER: 2042260000-SD DOC TYPE: PSD DOC PART: 000 SHEET NUMBER: 1 OF 1			
DRAFT WHERE APPLICABLE MUST REMAIN WITHIN DIMENSIONS	RHODGE	2018/01/26	204226	2042261001					
	A1	DRAWING SIZE	THIRD ANGLE PROJECTION	D					